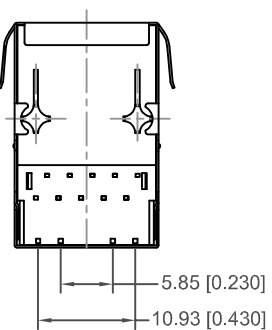
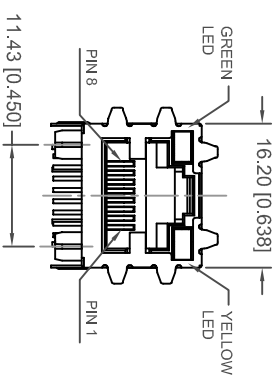
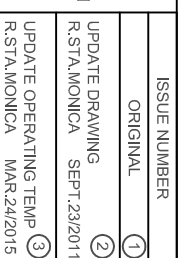


THIS IS A C.A.D. GENERATED DRAWING
DO NOT MAKE MANUAL REVISIONS TO MASTER.



CONTACTS: COPPER ALLOY PLATED WITH GOLD PLATING AND TIN IN SOLDER AREA

30 MICRO INCHES OF GOLD

5. RECOMMENDED TEMPERATURE FOR WAVE SOLDERING IS 260°C MAX, 10 SEC MAX

RJ45 MAGNETIC JACK WITH LED, 8P, 8C
SHIELDED, 10/100 Mbps FILTER

RJ45 MAGNETIC JACK WITH LED, 8P, 8C SHIELDED, 10/100 Mbps FILTER	
ACAD REFERENCE NO.:	A63-113-231N435
DRAWN: R.STA.MONICA	DATE: NOV.19/2010
CHECKED:	DATE:
PART NUMBER	

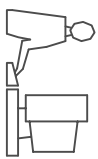
THESE DRAWINGS AND SPECIFICATIONS ARE THE PROPERTY OF EDAC INC., AND SHALL NOT BE REPRODUCED, OR COPIED OR USED AS THE BASIS FOR THE MANUFACTURE OR SALE OF APPARATUS WITHOUT WRITTEN PERMISSION.

SEE NOTE	SHEET 1 OF 2
DRAWING NUMBER A63-112-231N435	ISSUE 3



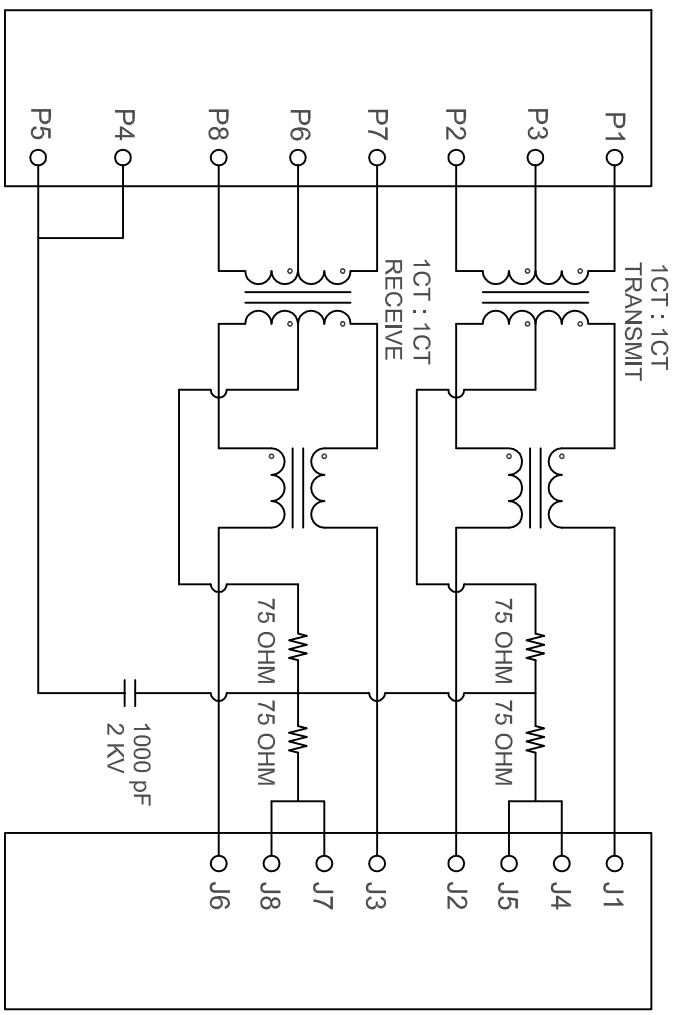
ELECTRICAL CIRCUIT:

THIS IS A C.A.D. GENERATED DRAWING
DO NOT MAKE MANUAL REVISIONS TO MASTER.

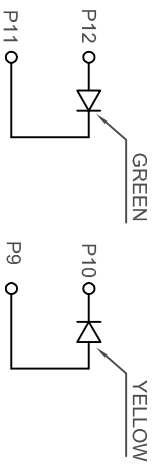


CONNECTOR SOLDER SIDE

RJ45 CONTACT SIDE



LED CIRCUIT:




LED SPECIFICATIONS (WITH FORWARD CURRENT OF 20 mA)			
STANDARD LED	WAVELENGTH	FORWARD V (MAX)	TYP
GREEN	565 nm	2.4 V	2.2 V
YELLOW	590 nm	2.5 V	2.1 V

- TEST NOTES:(25±5°C)
- 1.TURN RATIO:(100KHz,0.1V);
PINS:(P1-P2):(J1-J2)=1:1±5%
PINS:(P7-P8):(J3-J6)=1:1±5%
 - 2.LX:(100KHz,100mV,8mA, DC Bias)
PINS:(P1,P2),(P7,P8)=350uH MINIMUM
 - 3.DCR: PINS:(J1-J2),(J3-J6)= 1.2 OHMS MAXIMUM
 - 4.ISOLATION: PHY SIDE TO LINE SIDE:
1500VAC OR 2250VDC
 - 5.INSERTION LOSS:
-1.2dB MAXIMUM AT 1MHZ TO 100MHZ
 - 6.RETURN LOSS:
-16dB MINIMUM AT 1MHZ TO 30MHZ;
-12dB MINIMUM AT 30MHZ TO 60MHZ
-10dB MINIMUM AT 60MHZ TO 80MHZ
 - 7.CROSS TALK:
-30dB MIN AT 1MHZ TO 100MHZ
 - 8.COMMON TO COMMON MODE ATTENUATION:
-30dB MIN AT 1MHZ TO 100MHZ



THIS SERIES FULLY CONFORMS TO THE
EUROPEAN UNION DIRECTIVES
2011/65/EU FOR ROHS COMPLIANCY.

RJ45 MAGNETIC JACK WITH LED, 8P, 8C
SHIELDED, 10/100 Mbps FILTER



EDAC INC
TORONTO, ONTARIO
CANADA

THESE DRAWINGS AND SPECIFICATIONS
ARE THE PROPERTY OF EDAC INC.,AND
SHALL NOT BE REPRODUCED OR COPIED
OR USED AS THE BASIS FOR THE
MANUFACTURE OR SALE OF APPARATUS
WITHOUT WRITTEN PERMISSION.

ACAD REFERENCE NO.: A63-113-231N435	
DRAWN: R.STA.MONICA	DATE: NOV.19/2010
CHECKED:	DATE:
PART NUMBER	
SEE NOTE	SHEET 2 OF 2
DRAWING NUMBER	ISSUE
A63-112-231N435	3

Mouser Electronics

Authorized Distributor

Click to View Pricing, Inventory, Delivery & Lifecycle Information:

EDAC:

[A63-112-231N435](#)