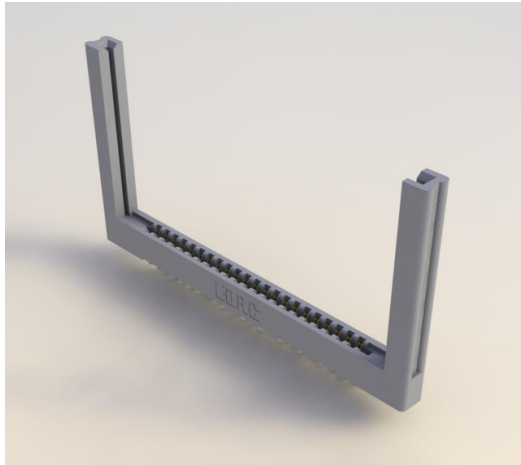




322 SERIES

Card Edge Connector .156" (3.96mm) Pitch



SERIES: 322

SPECIFICATIONS

| | |
|---|---|
| Insulator Material: | Grey polycarbonate, Glass reinforced |
| Contact Material: | Copper alloy |
| Contact Plating: | Gold plating on mating area, Tin plating on tails with nickel underplating all over |
| Current Rating: | Grey polycarbonate, Glass reinforced |
| Refer to 307/357 Series for more information/specifications | |

| Contact Rows and Insulator Material: | Description |
|--------------------------------------|--------------------------------|
| 1 | Single Row, Grey Polycarbonate |
| 2 | Double Row, Grey Polycarbonate |

FEATURES:

- .156" (3.96mm) Contact Spacing x .200" (5.08mm) Row Spacing
- Accepts .062" (1.57mm) Nominal Thickness P.C. Board
- Low Profile Insulator Body, .473" (12.01mm) with Card Guides
- Contact Termination Options include P.C. Tail, Wire Hole, Wire Wrap, 90 Degree and Extender Board Bends
- Single or Dual Row Configurations
- Variety of Mounting Options
- Accepts between Contact and In-Contact Polarizing Keys
- RoHS Compliant

EXAMPLE PART NUMBER 322-044-500-258

Series _____
Total Number of Contacts _____
Contact Code _____
Contact Rows _____
Mounting Options _____

Total Number of Contacts:

022

044

Contact Rows

Single Row

Dual Row

Contact Code

See 307/357 Series for available Contact Code Options and Tail Length "G" Dimensions

Mounting Options:

54

57

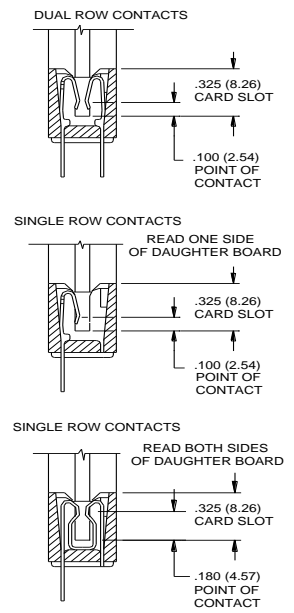
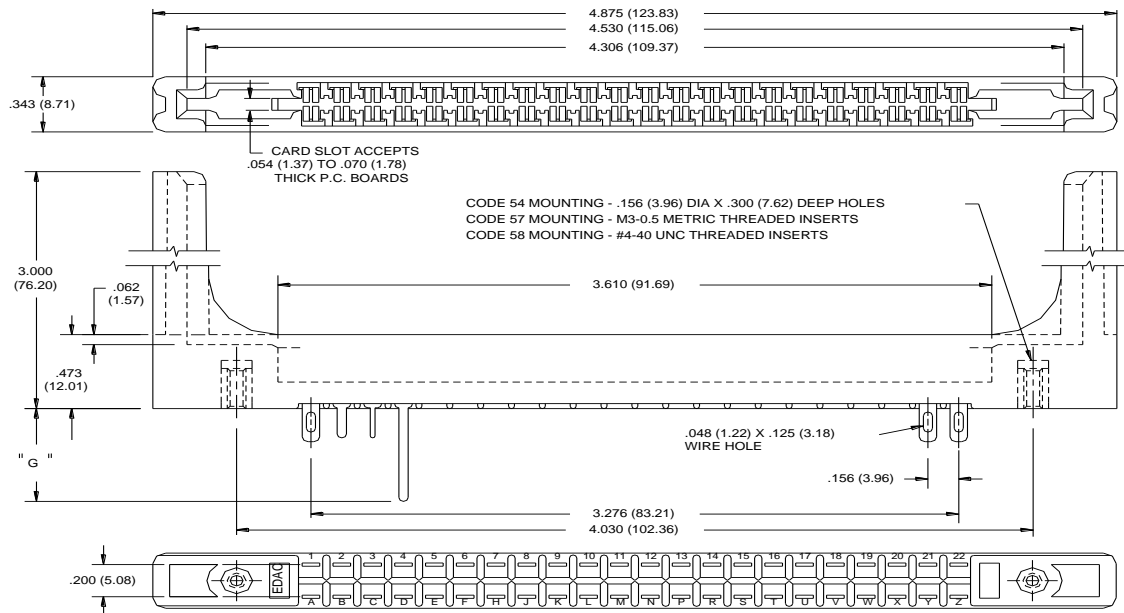
58

Description

Ø.156" (Ø3.96mm) x .300" (7.62mm) Deep Holes

M3-0.5 Metric Threaded Inserts

#4-40 Unified Threaded Inserts



Mouser Electronics

Authorized Distributor

Click to View Pricing, Inventory, Delivery & Lifecycle Information:

EDAC:

[322-022-501-380](tel:322-022-501-380)