

### Contact Information

540-Wire Wrap, Regular Point - Tail LG.=.560(14.22)  
.100" (2.54mm) Contact Spacing x .200" (5.08mm) Row Spacing

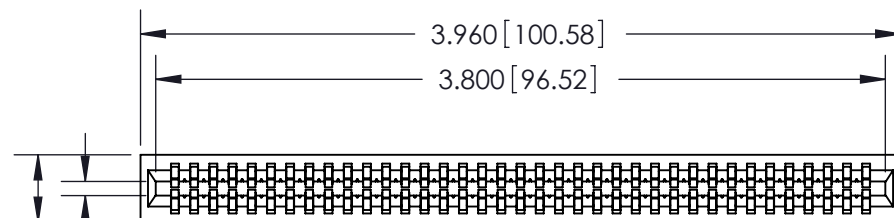
THIS IS A C.A.D. GENERATED DRAWING  
DO NOT MAKE MANUAL REVISIONS TO MASTER.



ISSUE NUMBER

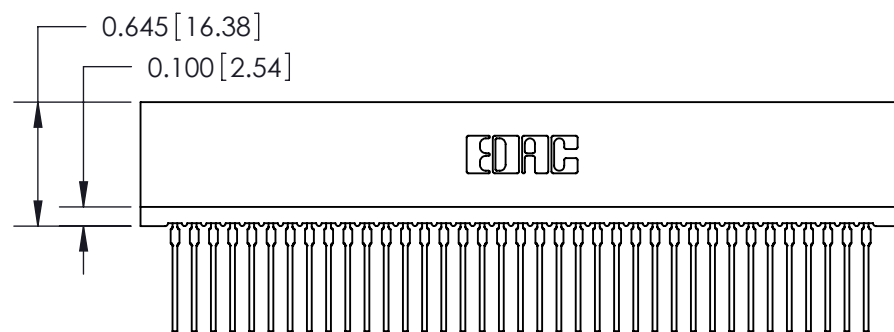
ORIGINAL

①

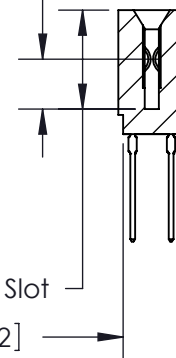


Card Slot Accepts  
.054 (1.37) to .070 (1.78)  
Thick P.C. Board

0.350 [8.89]



0.260 [6.60] Point of Contact



0.515 [13.08] Card Slot

0.300 [7.62]

745 Series Ultra-Mate Card Edge Connector - Press Fit

Part Number: 745-074-540-201



YOUR CONNECTION TO QUALITY & SERVICE

EDAC INC  
TORONTO, ONTARIO  
CANADA

THESE DRAWINGS AND SPECIFICATIONS  
ARE THE PROPERTY OF EDAC INC. AND  
SHALL NOT BE REPRODUCED, OR COPIED  
OR USED AS THE BASIS FOR THE  
MANUFACTURE OR SALE OF APPARATUS  
WITHOUT WRITTEN PERMISSION.

ACAD REFERENCE NO. 745-ENG MASTER

DRAWN: J.LEE DATE: MAY 04/09

CHECKED: DATE:

SCALE: SHEET 1 OF 2

DRAWING NUMBER  
745-ENG MASTER

ISSUE  
1

# Mouser Electronics

Authorized Distributor

Click to View Pricing, Inventory, Delivery & Lifecycle Information:

EDAC:

745-074-540-201