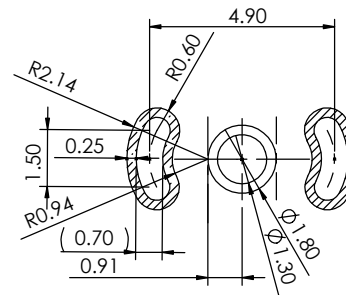
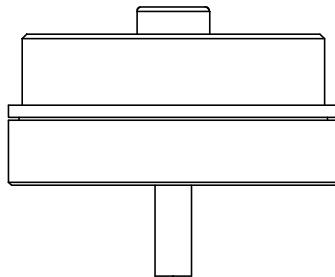
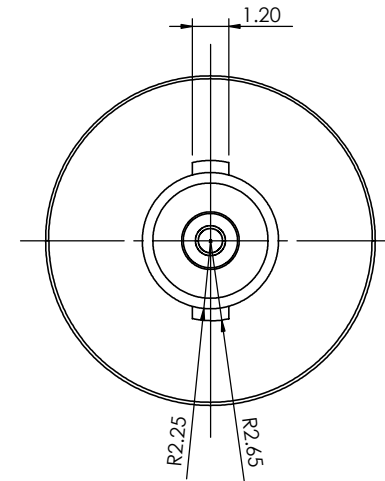
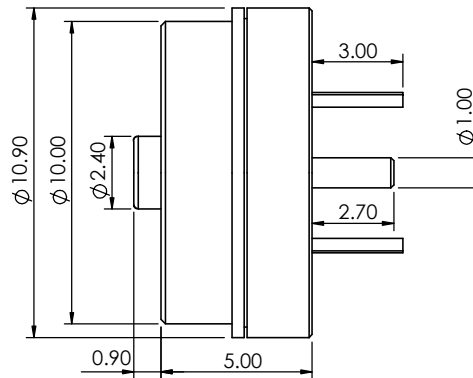
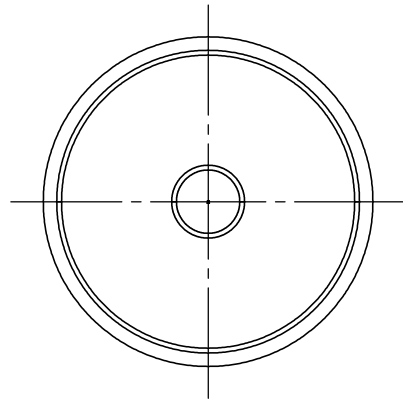


TOLERANCE UNLESS OTHERWISE SPECIFIED	
.X	±0.15
.XX	±0.10

THIS IS A C.A.D. GENERATED DRAWING
DO NOT MAKE MANUAL REVISIONS TO MASTER.



ISSUE NUMBER	
ORIGINAL	①



PCB LAYOUT
LAYOUT TOLERANCE: ±0.05MM

SPECIFICATION:

MATERIAL:

CONTACT: BRASS, GOLD FLASH PLATING ALL OVER NICKEL UNDERPLATING

HOUSING: LCP, WHITE

MAGNET: N52

ELECTRICAL:

RATED VOLTAGE (PER CONTACT): 5V

RATED CURRENT (PER CONTACT): 3A

WORKING TEMPERATURE RANGE: -30~+85°C




THIS SERIES FULLY CONFORMS TO
THE EUROPEAN UNION DIRECTIVES
2011/65/EU FOR RoHS COMPLIANCY.



YOUR CONNECTION TO QUALITY & SERVICE

EDAC INC
TORONTO, ONTARIO
CANADA

THESE DRAWINGS AND SPECIFICATIONS
ARE THE PROPERTY OF EDAC INC., AND
SHALL NOT BE REPRODUCED, OR COPIED
OR USED AS THE BASIS FOR THE
MANUFACTURE OR SALE OF APPARATUS
WITHOUT WRITTEN PERMISSION.

MAGNETIC SPRING LOADED CONNECTOR, 1POS, FEMALE		ACAD REFERENCE NO.: 686D02312030D1E		UNIT: MM	
		DRAWN: J.L.		DATE: 3/13/2023	
		CHECKED: R.S.M		DATE: 3/13/2023	
 <div>EDAC INC TORONTO, ONTARIO CANADA YOUR CONNECTION TO QUALITY & SERVICE</div>	THESE DRAWINGS AND SPECIFICATIONS ARE THE PROPERTY OF EDAC INC.,AND SHALL NOT BE REPRODUCED,OR COPIED OR USED AS THE BASIS FOR THE MANUFACTURE OR SALE OF APPARATUS WITHOUT WRITTEN PERMISSION.		SCALE: (IN CAD 1:1)		SHEET 1 OF 1
			DRAWING NUMBER: 686D02312030D1E		ISSUE 1
			PART NUMBER: 686D02312030D1E		

Mouser Electronics

Authorized Distributor

Click to View Pricing, Inventory, Delivery & Lifecycle Information:

EDAC:

[686D02312030D1E](#)