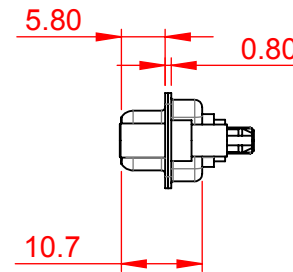
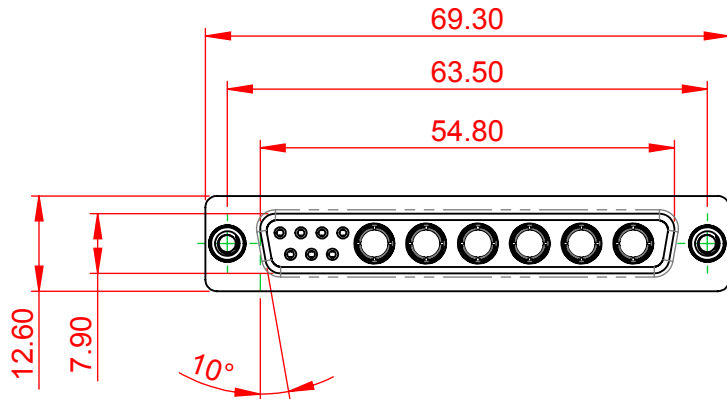


TOLERANCE UNLESS OTHERWISE SPECIFIED	
.X	±0.25
.XX	±0.13
.XXX	±0.05

THIS IS A C.A.D. GENERATED DRAWING
DO NOT MAKE MANUAL REVISIONS TO MASTER.



ISSUE NUMBER	
ORIGINAL	①



NOTES:

MATERIAL:

HOUSING: THERMOPLASTIC POLYESTER, UL94V-0

SHELL: STEEL, Sn or Ni PLATED

CONTACT: COPPER ALLOY SEE ORDERING GUIDE FOR PLATING

OPERATING TEMPERATURE: -55°C ~ 125°C

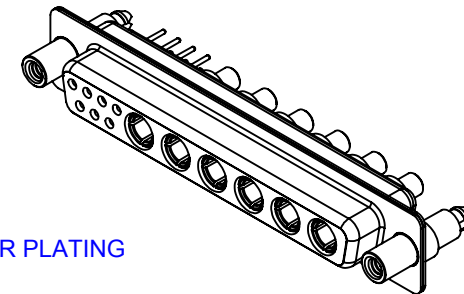
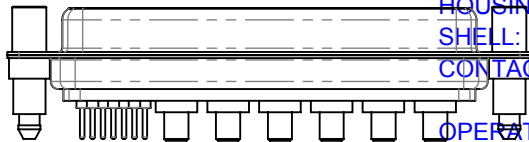
SIGNAL CONTACT CURRENT RATING: 5A PER CONTACT

SIGNAL CONTACT RESISTANCE: 10mΩ MAX.

INSULATOR RESISTANCE: 5000MΩ min.

DIELECTRIC

WITHSTANDING VOLTAGE: 1000V AC rms



THIS SERIES FULLY CONFORMS TO
THE EUROPEAN UNION DIRECTIVES
2011/65/EU FOR RoHS COMPLIANCY.



YOUR CONNECTION TO QUALITY & SERVICE

EDAC INC
TORONTO, ONTARIO
CANADA

THESE DRAWINGS AND SPECIFICATIONS
ARE THE PROPERTY OF EDAC INC., AND
SHALL NOT BE REPRODUCED, OR COPIED
OR USED AS THE BASIS FOR THE
MANUFACTURE OR SALE OF APPARATUS
WITHOUT WRITTEN PERMISSION.

COMBINATION D-SUB

SW REFERENCE NO.: 628 COMBO ASSEMBLY	
DRAWN: C.B	DATE: JAN. 01/2019
CHECKED:	DATE:
SCALE: (IN C.A.D. 1:1)	SHEET 1 OF 4
DRAWING NUMBER: 628-13W6224-3N6	ISSUE 1
PART NUMBER: 628-13W6224-3N6	

TOLERANCE UNLESS OTHERWISE SPECIFIED	
.X	±0.25
.XX	±0.13
.XXX	±0.05

THIS IS A C.A.D. GENERATED DRAWING
DO NOT MAKE MANUAL REVISIONS TO MASTER.



ISSUE NUMBER	
ORIGINAL	①



THIS SERIES FULLY CONFORMS TO
THE EUROPEAN UNION DIRECTIVES
2011/65/EU FOR RoHS COMPLIANCY.



EDAC INC
TORONTO, ONTARIO
CANADA
YOUR CONNECTION TO QUALITY & SERVICE

THESE DRAWINGS AND SPECIFICATIONS
ARE THE PROPERTY OF EDAC INC., AND
SHALL NOT BE REPRODUCED, OR COPIED
OR USED AS THE BASIS FOR THE
MANUFACTURE OR SALE OF APPARATUS
WITHOUT WRITTEN PERMISSION.

COMBINATION D-SUB

SW REFERENCE NO.: 628 COMBO ASSEMBLY	
DRAWN: C.B	DATE: JAN. 01/2019
CHECKED:	DATE:
SCALE: N.T.S	SHEET 2 OF 6
DRAWING NUMBER: 628-13W6224-3N6	ISSUE 1
PART NUMBER: 628-13W6224-3N6	

TOLERANCE UNLESS OTHERWISE SPECIFIED	
.X	±0.25
.XX	±0.13
.XXX	±0.05

THIS IS A C.A.D. GENERATED DRAWING
DO NOT MAKE MANUAL REVISIONS TO MASTER.



ISSUE NUMBER
ORIGINAL ①

2W2 / 2WK2



3W3 / 3WK3



5W1 Male/Female



24W7 Male/Female



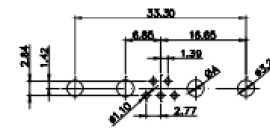
5W5 Male



8W8 Male



7W2 Male/Female



21W4 Male/Female



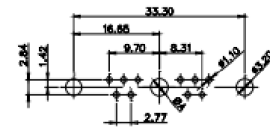
5W5 Female



8W8 Female



11W1 Male/Female



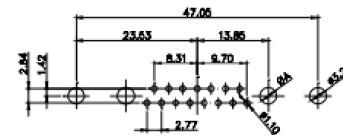
27W2 Male/Female



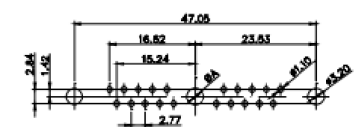
CURRENT RATING / ϕ A

10A / 2.2
20A / 3.3
30A / 3.7
40A / 4.2

17W2 Male/Female



21W1 Male/Female



THIS SERIES FULLY CONFORMS TO
THE EUROPEAN UNION DIRECTIVES
2011/65/EU FOR RoHS COMPLIANCY.



YOUR CONNECTION TO QUALITY & SERVICE

EDAC INC
TORONTO, ONTARIO
CANADA

THESE DRAWINGS AND SPECIFICATIONS
ARE THE PROPERTY OF EDAC INC., AND
SHALL NOT BE REPRODUCED, OR COPIED
OR USED AS THE BASIS FOR THE
MANUFACTURE OR SALE OF APPARATUS
WITHOUT WRITTEN PERMISSION.

COMBINATION D-SUB

SW REFERENCE NO.: 628 COMBO ASSEMBLY

DRAWN: C.B

DATE: JAN. 01/2019

CHECKED:

DATE:

SCALE: N.T.S

SHEET 3 OF 4

DRAWING NUMBER: 628-13W6224-3N6

ISSUE

PART NUMBER: 628-13W6224-3N6

1

THIS IS A C.A.D. GENERATED DRAWING
DO NOT MAKE MANUAL REVISIONS TO MASTER.

[illegible]

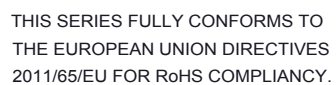
Figure 1 is a plan view of the bridge deck showing the layout of the 15 piles. The deck is 81.00m wide. The piles are arranged in two rows: 10 in the front row and 5 in the back row. The center-to-center spacing between piles in the front row is 2.77m. The center-to-center spacing between the front and back rows is 2.00m. The layout is defined by several key dimensions: a total width of 81.00m, a front row offset of 2.77m from the left edge, a back row offset of 2.00m from the front row, and various offsets from the right edge (1.52m, 2.00m, 2.77m, 3.00m, 3.75m, 4.50m, 5.25m, 6.00m, 6.75m, 7.50m, 8.25m, 9.00m, 9.75m, 10.50m, 11.25m, 12.00m, 12.75m, 13.50m, 14.25m, 15.00m, 15.75m, 16.50m, 17.25m, 18.00m, 18.75m, 19.50m, 20.25m, 21.00m, 21.75m, 22.50m, 23.25m, 24.00m, 24.75m, 25.50m, 26.25m, 27.00m, 27.75m, 28.50m, 29.25m, 30.00m, 30.75m, 31.50m, 32.25m, 33.00m, 33.75m, 34.50m, 35.25m, 36.00m, 36.75m, 37.50m, 38.25m, 39.00m, 39.75m, 40.50m, 41.25m, 42.00m, 42.75m, 43.50m, 44.25m, 45.00m, 45.75m, 46.50m, 47.25m, 48.00m, 48.75m, 49.50m, 50.25m, 51.00m, 51.75m, 52.50m, 53.25m, 54.00m, 54.75m, 55.50m, 56.25m, 57.00m, 57.75m, 58.50m, 59.25m, 60.00m, 60.75m, 61.50m, 62.25m, 63.00m, 63.75m, 64.50m, 65.25m, 66.00m, 66.75m, 67.50m, 68.25m, 69.00m, 69.75m, 70.50m, 71.25m, 72.00m, 72.75m, 73.50m, 74.25m, 75.00m, 75.75m, 76.50m, 77.25m, 78.00m, 78.75m, 79.50m, 80.25m, 81.00m). The layout is defined by several key dimensions: a total width of 81.00m, a front row offset of 2.77m from the left edge, a back row offset of 2.00m from the front row, and various offsets from the right edge (1.52m, 2.00m, 2.77m, 3.00m, 3.75m, 4.50m, 5.25m, 6.00m, 6.75m, 7.50m, 8.25m, 9.00m, 9.75m, 10.50m, 11.25m, 12.00m, 12.75m, 13.50m, 14.25m, 15.00m, 15.75m, 16.50m, 17.25m, 18.00m, 18.75m, 19.50m, 20.25m, 21.00m, 21.75m, 22.50m, 23.25m, 24.00m, 24.75m, 25.50m, 26.25m, 27.00m, 27.75m, 28.50m, 29.25m, 30.00m, 30.75m, 31.50m, 32.25m, 33.00m, 33.75m, 34.50m, 35.25m, 36.00m, 36.75m, 37.50m, 38.25m, 39.00m, 39.75m, 40.50m, 41.25m, 42.00m, 42.75m, 43.50m, 44.25m, 45.00m, 45.75m, 46.50m, 47.25m, 48.00m, 48.75m, 49.50m, 50.25m, 51.00m, 51.75m, 52.50m, 53.25m, 54.00m, 54.75m, 55.50m, 56.25m, 57.00m, 57.75m, 58.50m, 59.25m, 60.00m, 60.75m, 61.50m, 62.25m, 63.00m, 63.75m, 64.50m, 65.25m, 66.00m, 66.75m, 67.50m, 68.25m, 69.00m, 69.75m, 70.50m, 71.25m, 72.00m, 72.75m, 73.50m, 74.25m, 75.00m, 75.75m, 76.50m, 77.25m, 78.00m, 78.75m, 79.50m, 80.25m, 81.00m).

Figure 1 is a plan view of the bridge deck. It shows a series of circular piers or columns. The overall width is labeled as 21.1m. Various horizontal dimensions are provided: 31.75, 21.95, 24.77, 23.39, 8.10, 2.77, 0.4, 1.42, 0.85, and 0.20. The diagram illustrates the layout and spacing of the bridge components.

Figure 1 is a plan view of the bridge deck. It shows a central section with a width of 22.70m. To the right of this section, there is a width of 31.75m. The total width of the deck is 63.50m. Other dimensions shown include 2.84, 1.42, 7.15, 11.08, 2.77, 7.13, 8.84, and 63.20.

[illegible]

PART NUMBER:	628-13W6224-3N6	1
--------------	-----------------	---



THESE DRAWINGS AND SPECIFICATIONS
ARE THE PROPERTY OF EDAC INC., AND
SHALL NOT BE REPRODUCED, OR COPIED
OR USED AS THE BASIS FOR THE
MANUFACTURE OR SALE OF APPARATUS
WITHOUT WRITTEN PERMISSION.

Mouser Electronics

Authorized Distributor

Click to View Pricing, Inventory, Delivery & Lifecycle Information:

EDAC:

[628-13W6224-3N6](#)