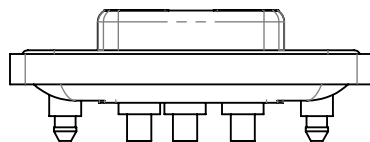
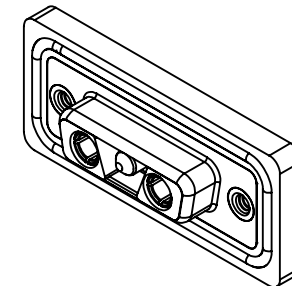
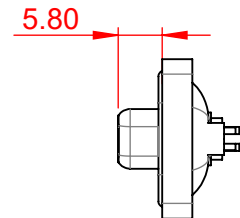


TOLERANCE UNLESS OTHERWISE SPECIFIED	
.X	±0.25
.XX	±0.13
.XXX	±0.05

THIS IS A C.A.D. GENERATED DRAWING
DO NOT MAKE MANUAL REVISIONS TO MASTER.



ISSUE NUMBER	
ORIGINAL	①



NOTES:

MATERIAL:

HOUSING: THERMOPLASTIC POLYESTER, UL94V-0

SHELL: STEEL, NICKEL PLATED

CONTACT: COPPER ALLOY, 5μ GOLD PLATING

OPERATING TEMPERATURE: -55°C ~ 125°C

SIGNAL CONTACT CURRENT RATING: 5A PER CONTACT

SIGNAL CONTACT RESISTANCE: 10mΩ MAX.

INSULATOR RESISTANCE: 5000MΩ min.

DIELECTRIC

WITHSTANDING VOLTAGE: 1000V AC rms



THIS SERIES FULLY CONFORMS TO
THE EUROPEAN UNION DIRECTIVES
2011/65/EU FOR RoHS COMPLIANCY.



YOUR CONNECTION TO QUALITY & SERVICE

EDAC INC
TORONTO, ONTARIO
CANADA

THESE DRAWINGS AND SPECIFICATIONS
ARE THE PROPERTY OF EDAC INC., AND
SHALL NOT BE REPRODUCED, OR COPIED
OR USED AS THE BASIS FOR THE
MANUFACTURE OR SALE OF APPARATUS
WITHOUT WRITTEN PERMISSION.

COMBINATION D-SUB

SW REFERENCE NO.: 628 COMBO ASSEMBLY	
DRAWN: C.B	DATE: JAN. 01/2019
CHECKED:	DATE:
SCALE: (IN C.A.D. 1:1)	SHEET 1 OF 4
DRAWING NUMBER: 628W3WK3124-3N5	ISSUE 1
PART NUMBER: 628W3WK3124-3N5	

TOLERANCE UNLESS OTHERWISE SPECIFIED	
.X	±0.25
.XX	±0.13
.XXX	±0.05

THIS IS A C.A.D. GENERATED DRAWING
DO NOT MAKE MANUAL REVISIONS TO MASTER.



ISSUE NUMBER	
ORIGINAL	①



THIS SERIES FULLY CONFORMS TO
THE EUROPEAN UNION DIRECTIVES
2011/65/EU FOR RoHS COMPLIANCY.



EDAC INC
TORONTO, ONTARIO
CANADA
YOUR CONNECTION TO QUALITY & SERVICE

THESE DRAWINGS AND SPECIFICATIONS
ARE THE PROPERTY OF EDAC INC., AND
SHALL NOT BE REPRODUCED, OR COPIED
OR USED AS THE BASIS FOR THE
MANUFACTURE OR SALE OF APPARATUS
WITHOUT WRITTEN PERMISSION.

COMBINATION D-SUB

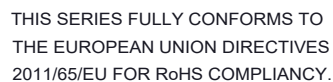
SW REFERENCE NO.: 628 COMBO ASSEMBLY	
DRAWN: C.B	DATE: JAN. 01/2019
CHECKED:	DATE:
SCALE: N.T.S	SHEET 2 OF 6
DRAWING NUMBER: 628W3WK3124-3N5	ISSUE 1
PART NUMBER: 628W3WK3124-3N5	

THIS IS A C.A.D. GENERATED DRAWING
DO NOT MAKE MANUAL REVISIONS TO MASTER.

[illegible]

40A / 4.2

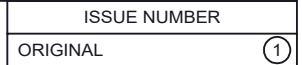
Technical drawing of a mechanical part with dimensions. The drawing shows a side view of a component with a total length of 47.06. Key dimensions include: a top flange with a width of 23.53 and a thickness of 2.84; a central section with a width of 13.85 and a thickness of 1.52; a bottom flange with a width of 8.31 and a thickness of 2.77; and a series of holes with diameters of 8.31, 9.70, and 10.10. The drawing also shows a 45-degree chamfer on the right end.



THESE DRAWINGS AND SPECIFICATIONS
ARE THE PROPERTY OF EDAC INC.,AND
SHALL NOT BE REPRODUCED,OR COPIED
OR USED AS THE BASIS FOR THE
MANUFACTURE OR SALE OF APPARATUS
WITHOUT WRITTEN PERMISSION.

PART NUMBER:	628W3WK3124-3N5	1
--------------	-----------------	---

THIS IS A C.A.D. GENERATED DRAWING
DO NOT MAKE MANUAL REVISIONS TO MASTER.



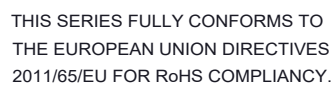
Technical drawing of a mechanical part with dimensions. The drawing shows a cross-section of a part with a central hole and a smaller hole on the right. The dimensions are as follows:

- Overall width: 47.05
- Distance from left edge to center of main hole: 23.63
- Distance from center of main hole to center of smaller hole: 14.83
- Distance from center of smaller hole to right edge: 9.70
- Radius of main hole: R.31
- Radius of smaller hole: R.10
- Distance from left edge to center of main hole (alternative dimension): 2.84
- Distance from center of main hole to right edge (alternative dimension): 2.77
- Angle of the smaller hole: 90°
- Angle of the main hole: 83.20°

Figure 1 is a plan view of the bridge deck. It shows a rectangular deck with a total width of 81.00m. The deck is reinforced with a grid of bars. The reinforcement layout is detailed with various dimensions: 30.50m, 16.02m, 15.72m, 20.70m, 16.24m, 8.74m, 2.77m, 81.10m, and 81.20m. The reinforcement bars are labeled with diameters: 24, 16, 12, and 8 mm. The deck is shown with a central longitudinal section and a cross-section at the right end.

Figure 1 is a plan view of the bridge deck. It shows a rectangular deck with a total width of 61.00m. The deck is divided into sections with reinforcement bars. The dimensions for the deck width and reinforcement layout are provided. The reinforcement bars are spaced at 20.70m and 20.78m. The dimensions for the deck width and reinforcement layout are provided.

PART NUMBER:	628W3WK3124-3N5	1
--------------	-----------------	---



EDAC INC
TORONTO, ONTARIO
CANADA

THESE DRAWINGS AND SPECIFICATIONS
ARE THE PROPERTY OF EDAC INC.,AND
SHALL NOT BE REPRODUCED,OR COPIED
OR USED AS THE BASIS FOR THE
MANUFACTURE OR SALE OF APPARATUS
WITHOUT WRITTEN PERMISSION.

Mouser Electronics

Authorized Distributor

Click to View Pricing, Inventory, Delivery & Lifecycle Information:

EDAC:

[628W3WK3124-3N5](#)