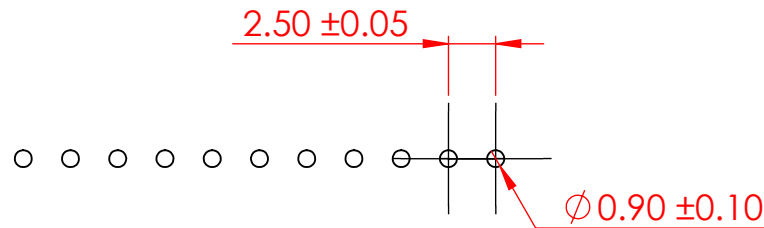
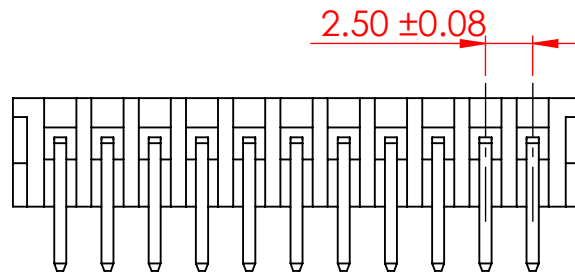
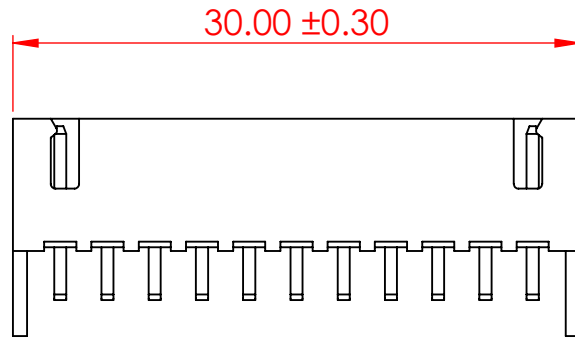


TOLERANCE UNLESS OTHERWISE SPECIFIED	
.X	±0.3
.XX	±0.2
.XXX	±0.1

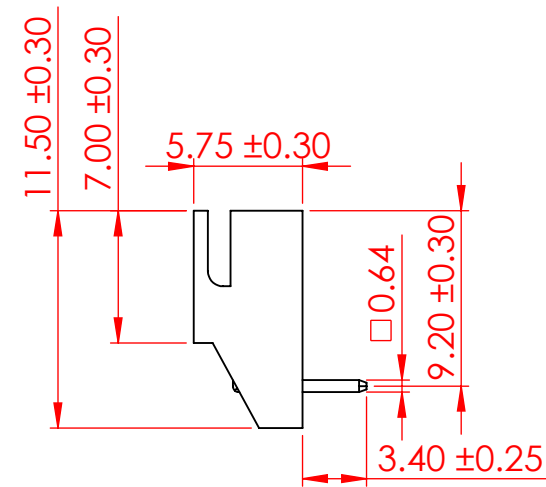
THIS IS A C.A.D. GENERATED DRAWING
DO NOT MAKE MANUAL REVISIONS TO MASTER.



ISSUE NUMBER	
ORIGINAL	①



RECOMMENDED PCB LAYOUT



SPECIFICATIONS:
 VOLTAGE RATING: 250V AC/DC
 CURRENT RATING: 3A AC/DC
 WITHSTANDING VOLTAGE: 800V AC/MIN
 TEMPERATURE RANGE: -40°C TO 105°C
 INSULATION RESISTANCE: ≥ 1000MΩ
 CONTACT RESISTANCE: ≤ 10mΩ

INSULATOR MATERIAL: NYLON 66, UL94V-0
 COLOR-NATURAL

CONTACT: BRASS, TIN PLATED

MATES WITH HOUSING: 14K-511-210-AA2



THIS SERIES FULLY CONFORMS TO
THE EUROPEAN UNION DIRECTIVES
2011/65/EU FOR RoHS COMPLIANCY.



EDAC INC
TORONTO, ONTARIO
CANADA
YOUR CONNECTION TO QUALITY & SERVICE

THESE DRAWINGS AND SPECIFICATIONS
ARE THE PROPERTY OF EDAC INC., AND
SHALL NOT BE REPRODUCED, OR COPIED
OR USED AS THE BASIS FOR THE
MANUFACTURE OR SALE OF APPARATUS
WITHOUT WRITTEN PERMISSION.

14K SERIES PIN HEADER, 2.50 PITCH, SIDE ENTRY
WITH STABILIZER THROUGH HOLE STRAIGHT

ACAD REFERENCE NO.: 14K Assembly		UNIT: MM
DRAWN: V.K.	DATE: 02/14/24	
CHECKED: R.S.M.	DATE: 02/21/24	
SCALE: 2.5:1	SHEET 1 OF 1	
DRAWING NUMBER: 14K-511-416-AD1	ISSUE	
PART NUMBER: 14K-511-416-AD1	1	

Mouser Electronics

Authorized Distributor

Click to View Pricing, Inventory, Delivery & Lifecycle Information:

[EDAC:](#)

[14K-511-416-AD1](#)