

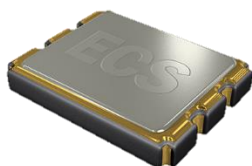
The VC-TXO-35SM is a VC (Voltage Controlled) TCXO (Temperature Compensated Crystal Oscillator) featuring very tight stability over a wide temperature range. The small subminiature SMD ceramic package measures 3.2 x 5.0 x 1.5 mm. The voltage control has a tuning range of ± 5 ppm minimum. The low profile package is ideal for wireless communications applications.

VC-TXO-35SM Series VC-TCXO

[Request a Sample](#)

OPERATING CONDITIONS / ELECTRICAL CHARACTERISTICS

VC-TXO-35SM



- Highly stable output
- Wide temperature range
- Small Footprint
- RoHS Compliant/PbFree
- Voltage control function
- Tape & Reel (1,000 pcs.)

Parameters	Conditions	VC-TXO-35SM			Units
		MIN	TYP	MAX	
Frequency Range		12.000		26.000	MHz
Frequency Stability	Option A -20 ~ +75°C			± 1.5	PPM
	Option B -30 ~ +75°C			± 2.5	PPM
	Option C -20 ~ +75°C			± 2.5	PPM
	Option D -30 ~ +80°C			± 2.5	PPM
Supply Voltage Change	+3V $\pm 5\%$			± 0.3	PPM
Load Change	10k Ω $\pm 10\%$ // 10pF $\pm 10\%$			± 0.2	PPM
Aging	Per Year @ +25°C $\pm 3^\circ\text{C}$			± 1.0	PPM
Storage Temperature		-40		+85	°C
Supply Voltage	+3.0V DC Nominal	+2.85	+3.0	+3.15	V DC
Input Current	Without Load			1.5	mA
Output Voltage	Clipped Sine Wave (DC-Cut)	0.8			Vp-p
Output Load	10k Ω $\pm 10\%$ // 10pF $\pm 10\%$				
Frequency Control Range	+1.5 VDC $\pm 1\text{V}$ Positive Slope	± 9		± 15	PPM
Control Voltage		+0.5	+1.5	+2.5	V

Part Numbering Guide: Example VC-TXO-35SM-128-B-TR

Series - Frequency Abbreviations - Frequency Stability - Packaging

VC-TXO-35SM

128 = 12.8 MHz

A = ± 1.5 ppm -20 ~ +75°C
 B = ± 2.5 ppm -30 ~ +75°C
 C = ± 2.5 ppm -20 ~ +75°C
 D = ± 2.5 ppm -30 ~ +80°C

TR = Tape & Reel
 1K/Reel

Package Dimensions (mm)

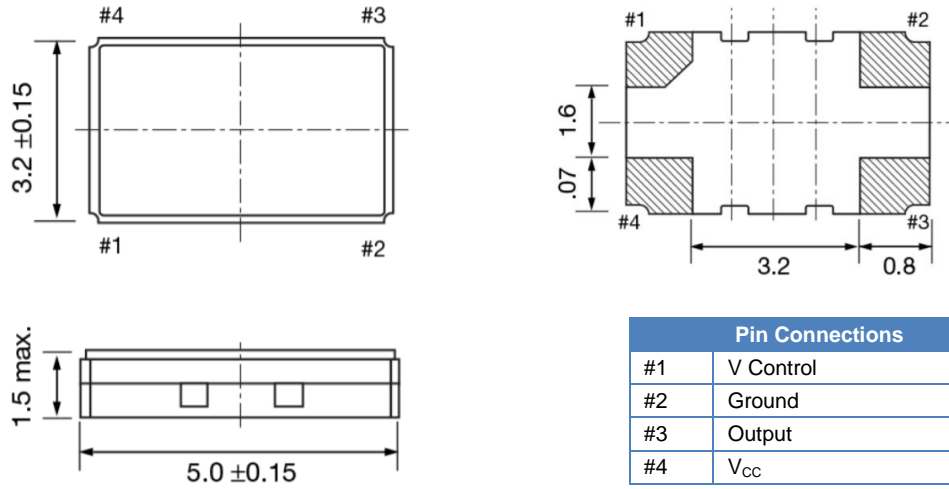


Figure 1) Top, Side, and Bottom views

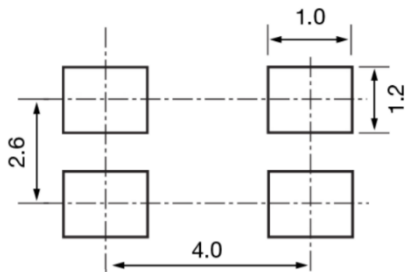


Figure 2) Land Pattern

Mouser Electronics

Authorized Distributor

Click to View Pricing, Inventory, Delivery & Lifecycle Information:

ECS:

[ECS-VC-TXO-35SM-192-B-TR](#) [ECS-VC-TXO-35SM-19.44-B-TR](#) [ECS-VC-TXO-35SM-168-B-TR](#) [ECS-VC-TXO-35SM-128-B-TR](#) [VC-TXO-35SM-130-B-TR](#) [VC-TXO-35SM-168-B-TR](#) [VC-TXO-35SM-120-B-TR](#) [VC-TXO-35SM-128-B-TR](#) [VC-TXO-35SM-194-B-TR](#) [VC-TXO-35SM-128-D](#) [VC-TXO-35SM-144-B-TR](#) [VC-TXO-35SM-192-B-TR](#)