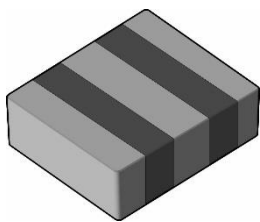


The ECS-CR2-B Chip Type SMD ceramic resonator includes built in capacitors for reduced component count. The SMD Ceramic resonator is an excellent low cost frequency control solution when absolute frequency accuracy is not important.

[Request a Sample](#)

### OPERATING CONDITIONS / ELECTRICAL CHARACTERISTICS

#### ECS-CR2-B



Part Number *	Frequency Range (MHz)	Frequency Accuracy @25°C (%)	Frequency Stability -20 ~ +80°C (%)	Aging for Ten Years (%)	ESR (Ω) MAX	Built-in Capacitance (C1 & C2)	Insulation Resistance @ 10VDC
ECS-CR2-□□.□□-B	8.00 ~ 13.00	±0.5	±0.3	±0.3	25	30 pF	100 M Ω Min.
ECS-CR2-□□.□□-B	13.10 ~ 40.00	±0.5	±0.3	±0.3	40	15pF	100 M Ω Min.

Complete part number to include frequency

- Chip Type SMD package
- RoHS Compliant (Note 7 Exemption)
- Built-in Load Capacitor
- Tape and Reel Packaging

#### Part Numbering Guide: ECS-CR2-20.00-B-TR

ECS	-	Series	-	Frequency	-	Version	-	Packaging
ECS		CR2 = 8 ~ 13 MHz CR2 = 13.1 ~ 40 MHz		20.00 = 20.00 MHz		B = Built In Caps		TR = Tape & Reel 1K/Reel

### Package Dimensions (mm)

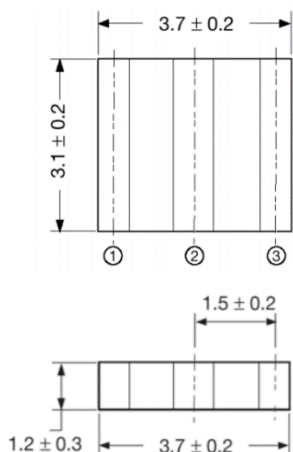


Figure 1) Top and Side Views

Pin Connections	
#1	In/Out
#2	Ground
#3	Out/In

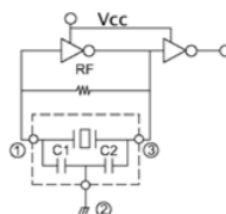


Figure 2) Test Circuit (74HCU04P)

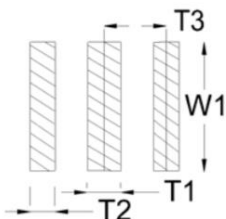


Figure 3) Land Pattern

Dimensions (mm)			
T1	T2	T3	W1
1.0 ± 0.2	0.7 ± 0.2	1.5 ± 0.2	4.1 ± 0.2

# Mouser Electronics

Authorized Distributor

Click to View Pricing, Inventory, Delivery & Lifecycle Information:

ECS:

[ECS-CR2-12.00-B-TR](#) [ECS-CR2-10.00-B-TR](#) [ECS-CR2-16.00-B-TR](#) [ECS-CR2-20.00-B-TR](#)