

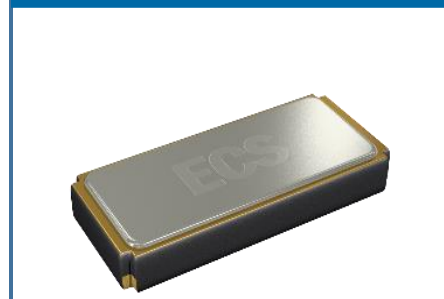
The ultra-miniature ECX-34R is a very compact SMD Tuning Fork Crystal with a Max. **Low ESR of 50K Ω** . The 3.2 x 1.5 x 0.9 mm ceramic package is ideal for mobile devices, real time clocks, and wireless applications.

ECX-34R SMD CRYSTAL

[Request a Sample](#)

ECX-34R SMD CRYSTAL

OPERATING CONDITIONS / ELECTRICAL CHARACTERISTICS



| PARAMETERS | CONDITIONS | ECX-34R | | | UNITS |
|------------------------------|----------------|---------|--------|--------|---------------------|
| | | MIN | TYP | MAX | |
| Frequency | Fo | | 32.768 | | KHz |
| Frequency Tolerance | @ +25°C | | | ± 20 * | ppm |
| Temperature Coefficient | | -0.028 | -0.034 | -0.040 | ppm/°C ² |
| Shunt Capacitance | Co | | 1.3 | | pF |
| Load Capacitance | Specify in P/N | | 12.5 | | pF |
| Drive Level | DL | | | 0.5 | μW |
| Equivalent Series Resistance | R1 | | | 50K | Ω |
| Insulation Resistance | @ 100V DC | 500M | | | Ω |
| Turnover Temperature | | +20 | +25 | +30 | °C |
| Operating Temperature | Topr | -40 | | +85 | °C |
| Storage Temperature | Tstg | -55 | | +125 | °C |
| Aging (First Year) | @ +25°C ±3°C | | | ±3 | ppm |

- Low Profile
- 50K Max. ESR
- 3.2 x 1.5 mm Footprint
- Extended Temp. Range
- RoHS Compliant
- Low Power RTC Applications such as STM32 [AN2867](#)

DIMENSIONS (mm)

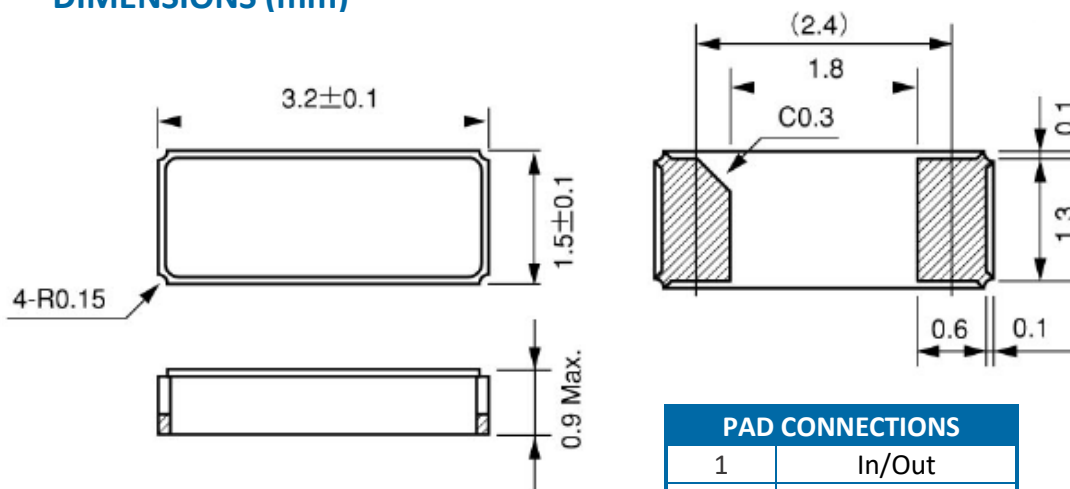


Figure 1) Top, Side, and Bottom views

| PAD CONNECTIONS | |
|-----------------|--------|
| 1 | In/Out |
| 2 | Out/In |

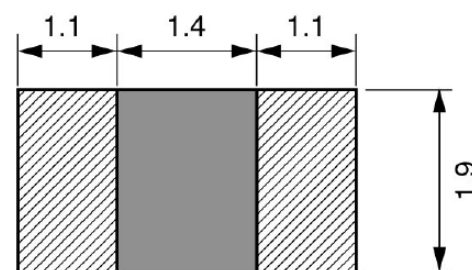


Figure 2) Suggested Land Pattern

PART NUMBERING GUIDE: Example ECS-.327-12.5-34R-TR

| ECS - FREQUENCY ABBREVIATION | | LOAD CAPACITANCE | PACKAGE | CUSTOM OPTIONS Tolerance | PACKAGING |
|------------------------------|-------------------|--|----------------|-----------------------------------|-----------------------------|
| ECS | .327 = 32.768 KHz | 12.5 = 12.5 pF 9 = 9 pF 7 = 7 pF 6 = 6 pF | -34R = ECX-34R | Blank = ±20 ppm * C = ± 10 ppm | TR = Tape & Reel 3K/Reel |

*Contact ECS for availability

Rev.2019

Mouser Electronics

Authorized Distributor

Click to View Pricing, Inventory, Delivery & Lifecycle Information:

ECS:

[ECS-.327-6-34R-TR](#)