

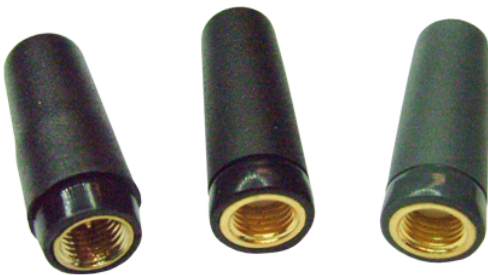


## Delta 8A

WiFi / WLAN Stubby Antenna

### Key Features

- 1/4 wave antenna
- SMA male and Reverse Polarity connector



### General Description

The Delta 8A is a 1/4 wave antenna design with a loaded helical stub which results in efficient performance with minimal size.

The Delta 8A can be used for WiFi, Bluetooth and Zigbee applications that require an extremely compact antenna.

The Delta 8A is supplied, as standard, with an SMA male or Reverse Polarity SMA Male connectors.

### Additional Considerations

- Small compact antenna
- Meets all EU compliance criteria for electronic goods





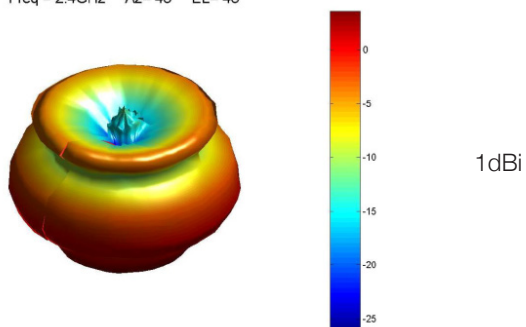
## Delta 8A

WiFi / WLAN Stubby Antenna

### Electrical Specifications

Impedance: 50 Ohm

Gain: Antenna gain at 2.4GHz  
Freq = 2.4GHz Az= 45 EL= 45



VSWR: <1.4:1

Frequency Range: 2400 - 2500MHz

Polarization: Vertical

Radiating Element: ¼ wave whip

Max Input Power: 50W

### Mechanical Specifications

Dimensions: L27mm

Diameter: 10.5mm

Connector: SMA Male

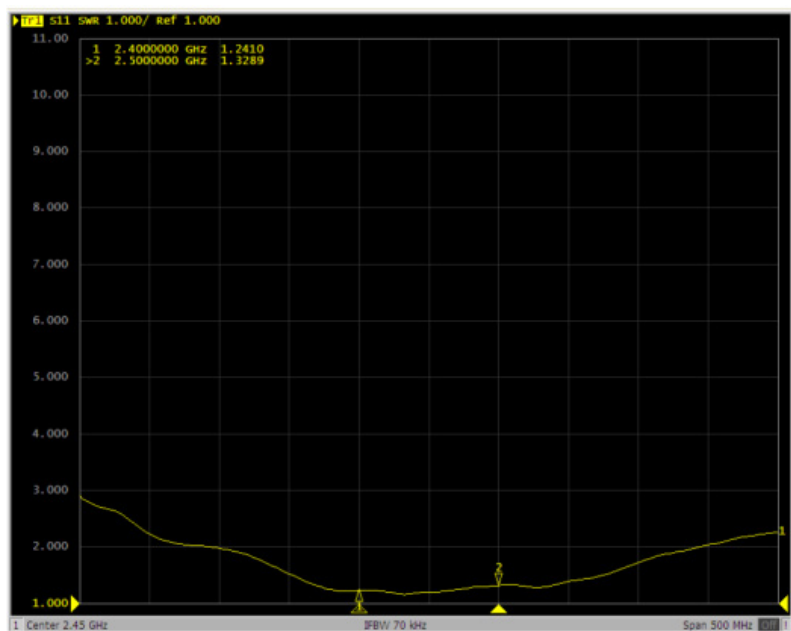
Mounting Method: Direct Connect

### Environmental Specifications

Storage Temperature: -25°C - 75°C

Operating Temperature: -25°C - 75°C

### VSWR

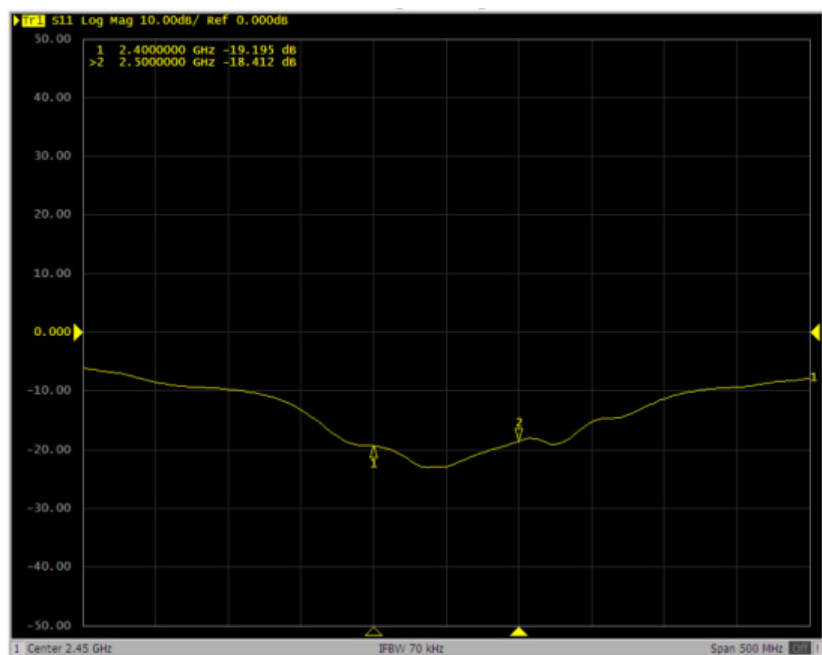




## Delta 8A

WiFi / WLAN Stubby Antenna

### Return Loss



### Ordering Details

Part number	Description
DELTA8A/x/SMAM/S/S/17	WiFi / WLAN Stubby Antenna SMA Male
DELTA8A/x/SMAM/S/RP/17	WiFi / WLAN Stubby Antenna SMA Male Reverse Polarity
DELTA8A/x/SMAM/RP/S/17 - GREY	WiFi / WLAN Stubby Antenna SMA Male Reverse Polarity GREY Radome

# Mouser Electronics

Authorized Distributor

Click to View Pricing, Inventory, Delivery & Lifecycle Information:

Siretta:

[DELTA8A/X/SMAM/S/RP/17](#) [DELTA8A/X/SMAM/S/S/17](#)