



Alpha 6

Combined 2G/3G & GPS Puck Antenna



Key Features

- Combined GPS and GSM/GPRS
- Adhesive pad mount
- Groundplane independent

General Description

Combined quad band GSM/GPS adhesive pad mount antenna for use with tracking and location based applications.

It is a well specified design, which mounts on glass in vehicles and provides good performance.

Supplied as standard with either a 2m or 4m cable. The GPS cable has an SMA Male connector and the GSM cable has an FME female connector.

Alternative cable lengths or connector types can be specified for volume orders.

Additional Considerations

- Dual antenna package saves cost on purchasing separate antennas
- Fast fit with the adhesive pad mount

2G
GSM

3G
UMTS

GPS
Position

IP
66

Alpha 6

Combined 2G/3G & GPS Puck Antenna

GPS Antenna - Dielectric Antenna

VSWR:	<1.5
Impedance:	50 Ohm
Axial Ratio:	3dB
Gain:	5dBic
Polarization:	RHCP
Center Frequency:	1575.42 + 1MHz

Mechanical Specifications

Connector:	L71.5 x H14.5mm Ø
Connector:	SMA Male GPS FME Female/SMA Male GSM
Cable:	RG174
Radome Material:	ABS
Mounting Method:	Adhesive

GPS Antenna - LNA

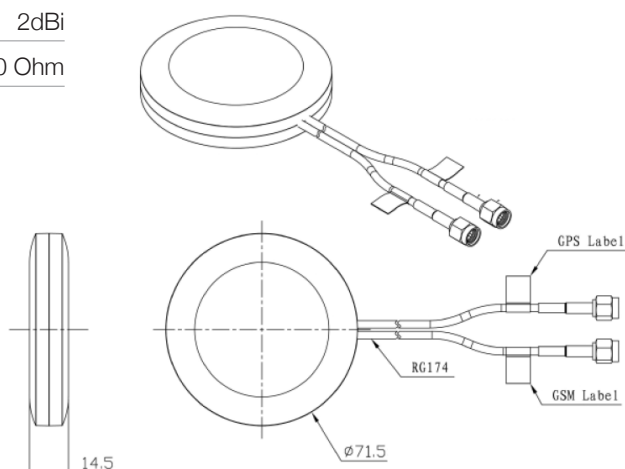
Gain:	28 + 2dBi
Noise Figure:	<1.5
VSWR:	<2.0
Supply Voltage:	2.5 - 5V DC
Current Consumption:	5 - 15mA

Environmental Specifications

Operating Temperature:	-40 - +85°C
Relative Humidity:	Up to 95%
Mounting Method:	Adhesive

2G/3G Antenna

Frequency Range:	824 - 960MHz / 1710-2170MHz
VSWR:	<2.5
Polarization:	Linear
Gain:	2dBi
Impedance:	50 Ohm

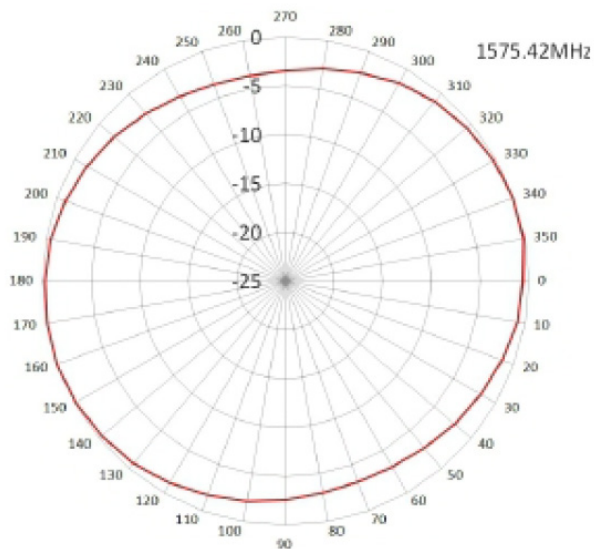




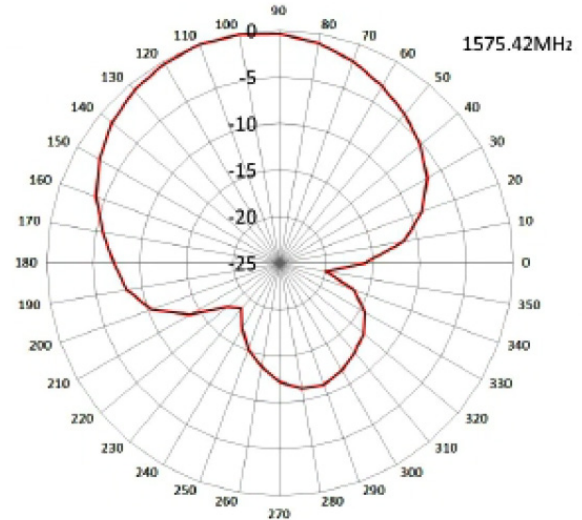
Alpha 6

Combined 2G/3G & GPS Puck Antenna

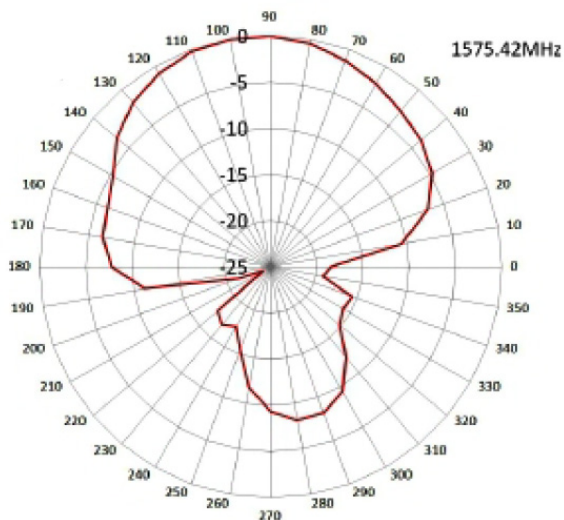
GPS Radiation plot XY Plane



GPS Radiation plot XZ Plane



GPS Radiation plot YZ Plane

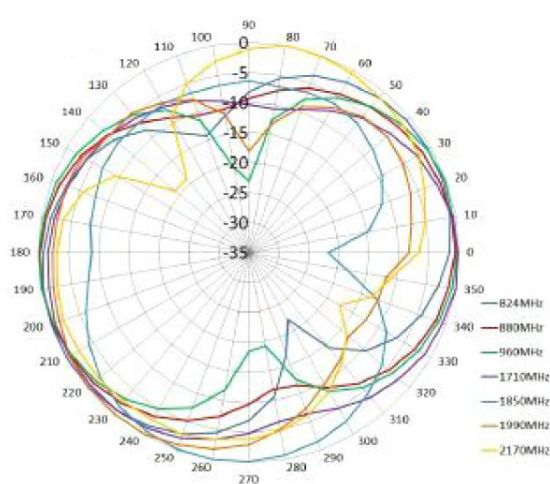




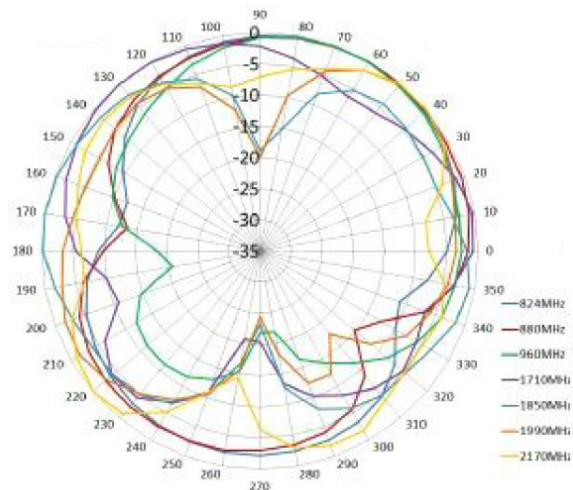
Alpha 6

Combined 2G/3G & GPS Puck Antenna

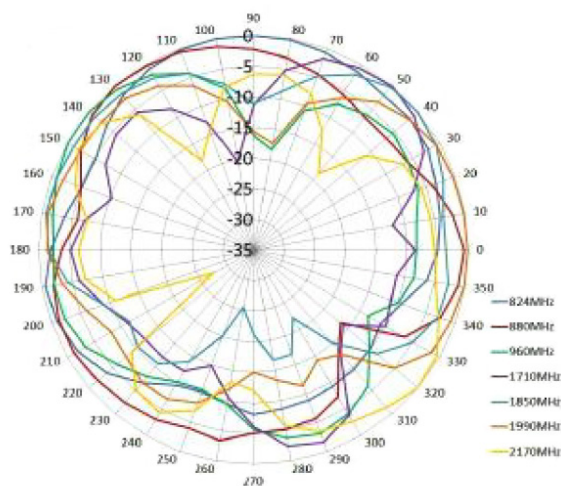
GSM Radiation plot XY Plane



GSM Radiation plot XZ Plane



GSM Radiation plot YZ Plane



Ordering Details

Part Number	Description
ALPHA6/2M/SMAM/S/S/FMEF/S/S/7	Combined GSM / GPRS & GPS Puck Antenna 2M FME Female (GSM), SMA Male (GPS)
ALPHA6/1M/SMAM/S/S/SMAM/S/S/7	Combined Quad Band GSM/GPS Antenna 1M SMA Male (GSM) & SMA Male (GPS)
ALPHA6/2M/SMAM/S/S/SMAM/S/S/7	Combined Quad Band GSM/GPS Antenna 2M SMA Male (GSM) & SMA Male (GPS)
ALPHA6/5M/SMAM/SMAM/S/S/7	Combined Quad Band GSM/GPS Antenna 5M SMA Male (GSM) & SMA Male (GPS)

Mouser Electronics

Authorized Distributor

Click to View Pricing, Inventory, Delivery & Lifecycle Information:

Siretta:

[ALPHA6/2M/SMAM/S/S/FMEF/S/S/7](#)