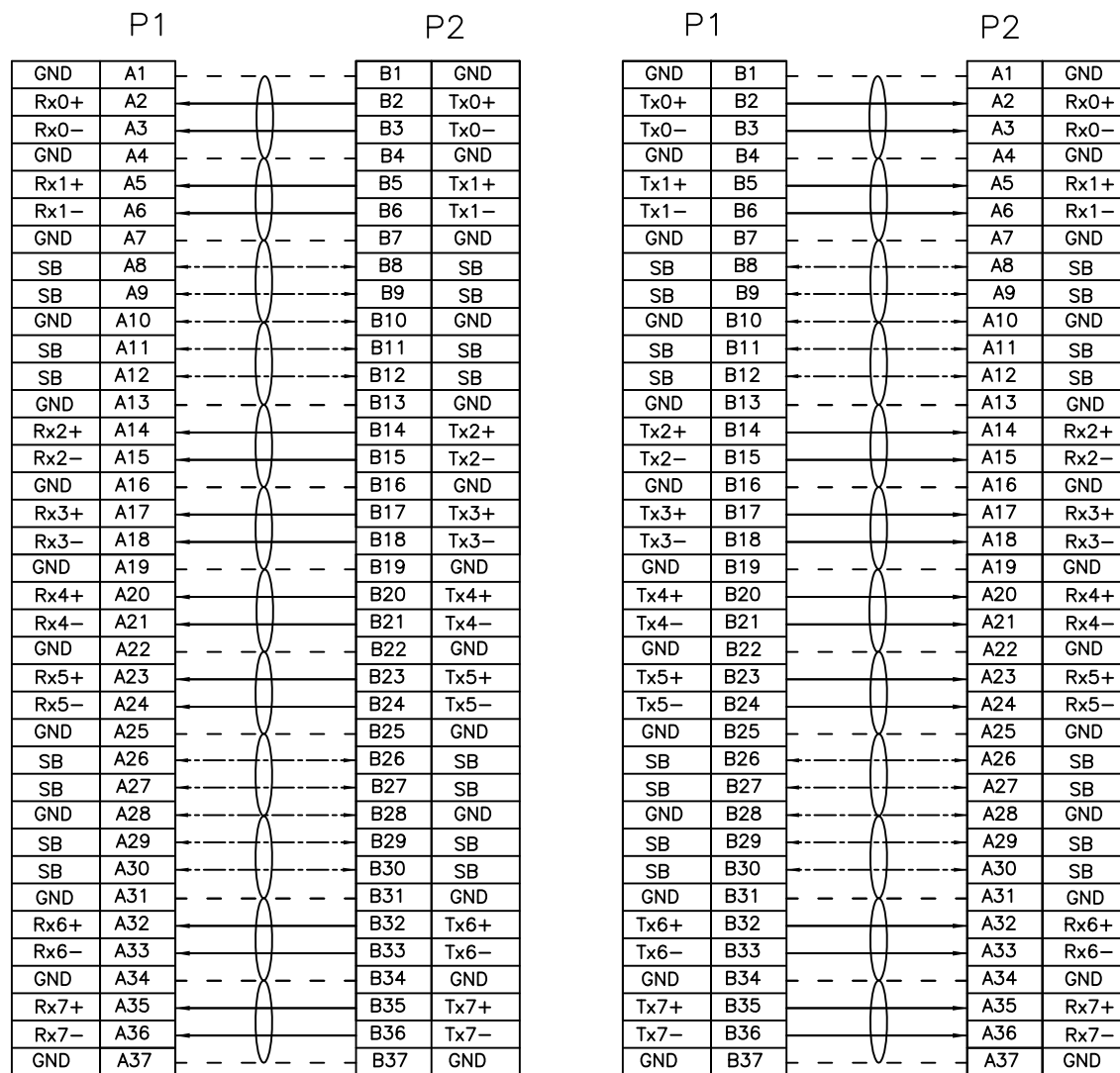
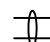
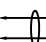
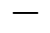



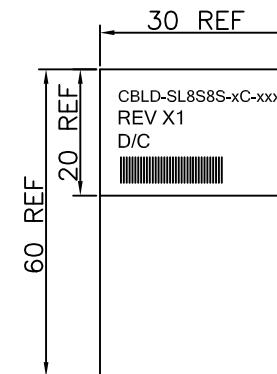


# WIRING TABLE



  HIGH-SPEED SERIAL DIFFERENTIAL PAIRS  
 --- SIGNAL RETURN  
 --- SIDE BAND SIGNAL

## LABEL INFORMATION




FONT: ARIAL  
HEIGHT: 2.0mm Min

## TEST CONDITIONS:

1. 100% OPEN & SHORT & MISS-WIRING & INTERMITTENCE TEST.
2. CONDUCTIVE RESISTANCE: 3Ω MAX.
3. INSULATION RESISTANCE: 10 MΩ
4. HI-POT TEST: 300VDC FOR 10ms.
5. THIS PRODUCT MEETS SAS4.0 / PCIe4.0 & 100% SI TEST

## PROPRIETARY NOTE:

This document contains confidential information and proprietary to Rego Electronics and shall not be reproduced or disclosed to other documents or used for any purpose other than that for which was obtained without the expressed written consent of Rego Electronics.

.X ± 0.30	APPROVED: Chris	 <a href="http://www.rego.com.tw">http://www.rego.com.tw</a>
.XX ± 0.20	CHECKED: Andy	
.XXX ± 0.15	DRAWN: Vic	
X* ± 3'	UNITS: mm	SCALE: NONE
PART NO: CBLD-SL8S8S-xC-xxxx		SHEET: 2 OF 2

A	05.11.2020
REV	DATE

# Mouser Electronics

Authorized Distributor

Click to View Pricing, Inventory, Delivery & Lifecycle Information:

[Rego Electronics:](#)

[CBLDSL8S8S-SC-1000](#) [CBLDSL8S8S-SC-300](#) [CBLD-SL8S8S-SC-300](#)