



FINGERPRINTS

Doc number:

100021008

Doc revision:

7.2

Doc state:

Approved

Date:

03/Apr/2020

Doc class:

Instruction

Page:

1(21)

# BM-Lite Development Kit

## Getting Started Guide



Doc number:  
**100021008**  
Doc class:  
**Instruction**

Doc revision:  
**7.2**

Doc state:  
**Approved**  
Approver:

Date:  
**03/Apr/2020**  
Page:  
**2(21)**

## FINGERPRINTS

### Contents

1	Introduction .....	3
2	Development Kit Hardware .....	4
2.1	BM-Lite Module .....	4
2.2	BM-Lite Adapter Flex Cable .....	6
2.3	FPC5924 Adapter Board.....	6
2.4	FPC5832 FTDI USB Adapter.....	8
3	Setup on Linux – Ubuntu 16.04 .....	9
3.1	Install Python3 .....	9
3.2	Install the required packages.....	9
3.3	Run reference Python Script to test the BM-Lite.....	10
4	Setup on Windows 7/10 .....	13
4.1	Install Python3 .....	13
4.2	Install the required packages.....	14
4.3	Installing an SPI filter for the FTDI board. ....	15
4.4	Run reference Python Script to test the BM-Lite.....	17
5	How to use the Python script ‘bep_ref.py’ .....	20
5.1	Arguments for running bep_ref.py .....	20
5.2	SPI Startup example.....	20
5.3	UART Startup example.....	20
5.4	Example procedures .....	20



Doc number:  
**100021008**  
Doc class:  
**Instruction**

Doc revision:  
**7.2**

Doc state:  
**Approved**  
Approver:

Date:  
**03/Apr/2020**  
Page:  
**3(21)**

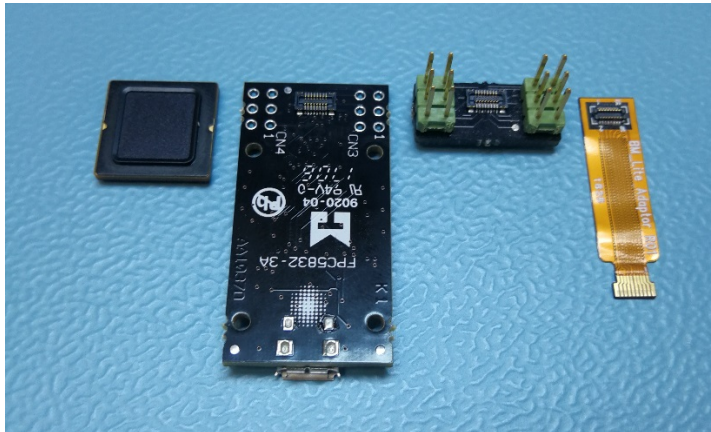
## FINGERPRINTS

### 1 Introduction

Welcome to the BM-Lite Getting Started Guide for the FPC BM-Lite Development Kit. This document will take you through the necessary steps for setting up your FPC BM-Lite Development kit to interface with your PC.

Included in your FPC BM-Lite Development Kit should be the following hardware:

- 1 BM-Lite module (Part number: 100018754)
- 1 FPC5832 FTDI USB Adapter (Part number: 100015089)
- 1 FPC5924 adapter board (Part number: 100015050)
- 1 BM-Lite adapter flex cable (Part number: 100020709)



You should also have the following documentation and software:

- BM-Lite Product Specification and Integration Guideline (Doc. number: 100020596)
- Reference source code for host implementation (Doc. number: 100020845)
- Reference Python scripts for host interface (Doc. number: 100020846)

This guide takes you through the steps to setup your FPC BM-Lite Development Kit on Linux and Windows. The development kit should be fairly OS agnostic but the operating systems that have been verified and are recommended are:

- Ubuntu 16.04
- Windows 7
- Windows 10



Doc number:  
**100021008**  
Doc class:  
**Instruction**

Doc revision:  
**7.2**

Doc state:  
**Approved**  
Approver:

Date:  
**03/Apr/2020**  
Page:  
**4(21)**

## FINGERPRINTS

## 2 Development Kit Hardware

### 2.1 BM-Lite Module

BM-Lite module (Part number: 100018754)

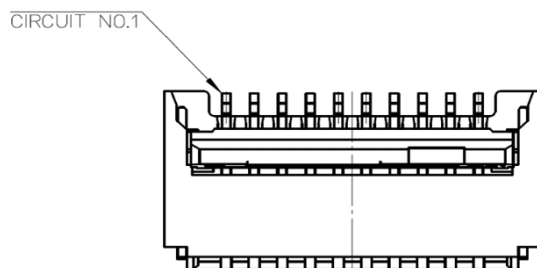
The BM-Lite module has a standard 10 pin 0.5 mm pitch Flat Flex Connector as main interface. The pin-out is described in the table below.

Pin number	Signal Name	Function	Description	Min. Voltage [V]	Max. Voltage [V]	Max. frequency [MHz]
1	GND	Supply	GND pin	0	0	DC
2	SPICLK	Digital in	Serial clock used for SPI	GND	3.6	20
3	MISO	Digital out	The SPI Serial tri-state output which is enabled with CS_N low	GND	3.6	SPICLK
4	MOSI	Digital in	The SPI Serial data Input	GND	3.6	SPICLK
5	CS_N	Digital in	Chip Select active when low	GND	3.6	~0
6	IRQ	Digital out	Interrupt request output (SPI only)	GND	3.6	~0
7	RST_N	Digital in	Reset module. Active low*.	GND	3.6	~0
8	UART_RX	Digital in	UART receive data pin	GND	3.6	921600** (Baud)
9	UART_TX	Digital out	UART transmit data pin	GND	3.6	921600** (Baud)
10	VDDIO	Supply	Core supply voltage. Typical 3.3V	3.0	3.6	DC

#### BM-Lite interface

\* Keep low at least 20µs to reset whole module

\*\*Default baud rate is 115200



BM-Lite FFC connector. Pin 1 is to the left.

BM-Lite supports both UART and SPI interfaces. Both interfaces are enabled at power-on, but only one of them can be used at the same time. BM-Lite will auto detect which interface is being used by detecting data traffic. It is therefore important that the input signals for the unused interface are pulled into a fixed state to avoid interference.

#### 2.1.1 SPI Interface

When using the SPI interface, the *UART RX* signal should be held at a fixed state to avoid unintentional interference on the UART interface.



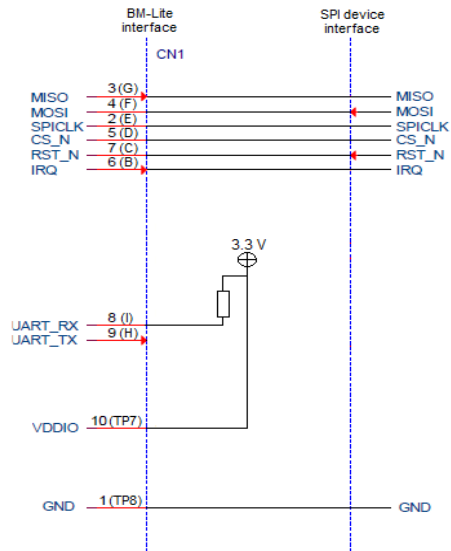
Doc number:  
**100021008**  
Doc class:  
**Instruction**

Doc revision:  
**7.2**

Doc state:  
**Approved**  
Approver:

Date:  
**03/Apr/2020**  
Page:  
**5(21)**

## FINGERPRINTS

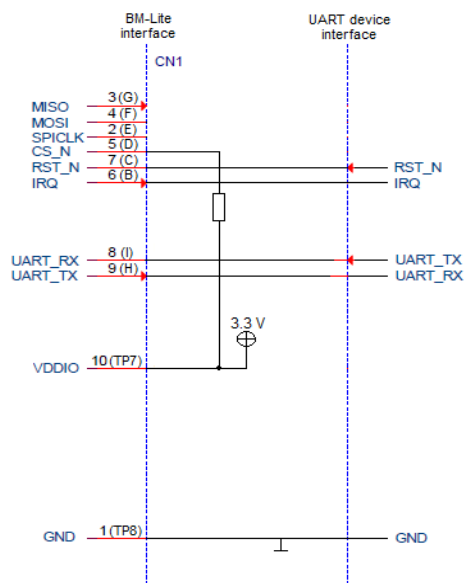


*Example schematic of BM-Lite interface using SPI*

*The SPI communication and commands are described in the BM-Lite Product description.*

### 2.1.2 UART Interface

When using the UART interface, the SPI CS signal should be held pulled up to avoid unintentional interference on the SPI interface.



*Schematic of BM-Lite interface using UART*



Doc number:  
**100021008**  
Doc class:  
**Instruction**

Doc revision:  
**7.2**

Doc state:  
**Approved**  
Approver:

Date:  
**03/Apr/2020**  
Page:  
**6(21)**

## FINGERPRINTS

### 2.2 BM-Lite Adapter Flex Cable

BM-Lite adapter flex cable (Part number: 100020709)

The BM-Lite Adapter Flex Cable supports the SPI interface only. It does not have the UART TX signal connected. The UART RX is connected to Ground.

To use UART a regular flex cable and can be used. This is not included in the BM-Lite package.

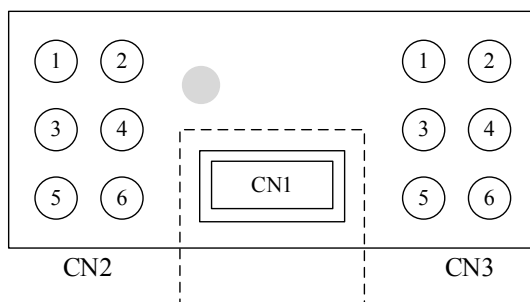
### 2.3 FPC5924 Adapter Board

FPC5924 adapter board (Part number: 100015050)

The FPC5924 Adapter Board is a breakout board for the BM-Lite Adapter Flex Cable.



*Showing how the BM-Lite Flex Cable should be mounted on the FPC5924 board.*



*Pinout of the FPC5924 breakout board.*



Doc number:  
**100021008**  
Doc class:  
**Instruction**

Doc revision:  
**7.2**

Doc state:  
**Approved**  
Approver:

Date:  
**03/Apr/2020**  
Page:  
**7(21)**

## FINGERPRINTS

Pin	BM Lite pin	Function	Comment
CN2: 1	5	CS_N	
CN2: 2	3	MISO	
CN2: 3	7	RST	
CN2: 4	4	MOSI	
CN2: 5	6	IRQ	
CN2: 6	2	SPI_CLK	
CN3: 1	-		Not connected
CN3: 2	-		Not connected
CN3: 3	-	VDD	
CN3: 4	-		Not connected
CN3: 5	-		Not connected
CN3: 6	1, 8	GND	



Doc number:  
**100021008**  
Doc class:  
**Instruction**

Doc revision:  
**7.2**

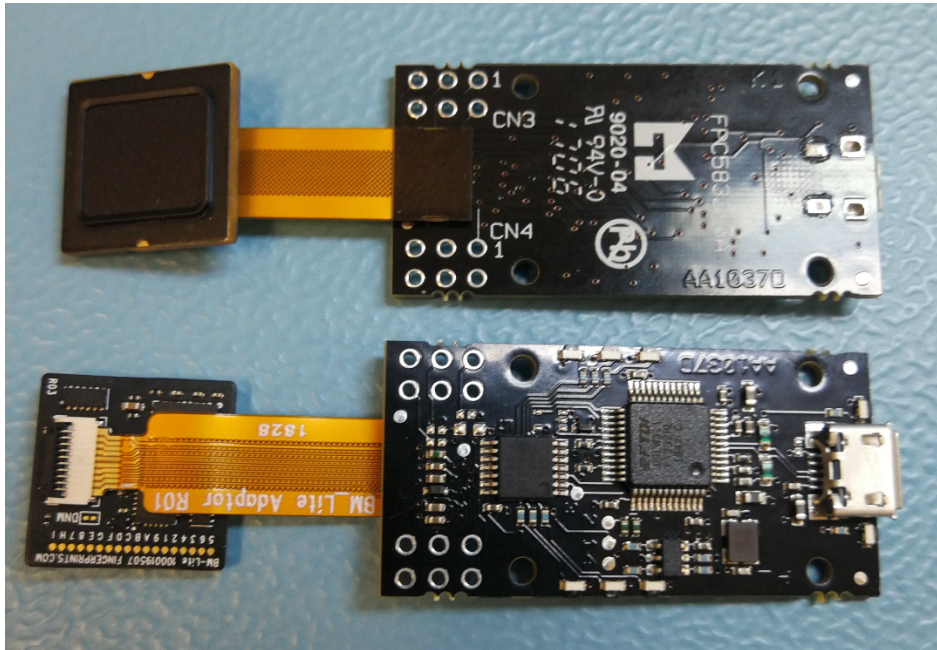
Doc state:  
**Approved**  
Approver:

Date:  
**03/Apr/2020**  
Page:  
**8(21)**

## FINGERPRINTS

### 2.4 FPC5832 FTDI USB Adapter

FPC5832 FTDI USB Adapter (Part number: 100015089)



The FPC5832 is an USB-SPI adapter using an FTDI FT232H converter. The CN3 connector is pin-compatible with CN2 on FPC5924, and CN4 is pin-compatible with CN3 on FPC5924.





Doc number:  
**100021008**  
Doc class:  
Instruction

Doc revision:  
**7.2**

Doc state:  
**Approved**  
Approver:

Date:  
**03/Apr/2020**  
Page:  
**9(21)**

## FINGERPRINTS

### 3 Setup on Linux – Ubuntu 16.04

#### 3.1 Install Python3

- Many Linux distributions come with Python3 pre-installed. To make sure your Python3 is up to date, open a terminal window and type the following commands:

`"sudo apt-get update"`

`"sudo apt-get upgrade"`

- When the process is complete, check the version of Python3 by typing the following command: `"python3 -V"`

Expected output will be "Python 3.5.2" or something similar. Recommended version is 3.4 or higher so that the Python package manager, pip, comes pre-installed.

- If Python3 is not pre-installed on your system, install it by opening a terminal window and typing the command: `"sudo apt-get install python3"`

#### 3.2 Install the required packages

The required packages for using the `bep_ref.py` script together with the BM-Lite on Linux are:

- `pexpect`
- `pyserial`
- `numpy`
- `pillow`
- `pyftdi`
- `spidev`

- Install these by using the `pip install` command in a terminal window:

`"python3 -m pip install <package name>"`

For example: `"python3 -m pip install pexpect"`

The package manager will fetch and install the package for you. Repeat the install command for all of the above packages.



Doc number:  
**100021008**  
Doc class:  
**Instruction**

Doc revision:  
**7.2**

Doc state:  
**Approved**  
Approver:

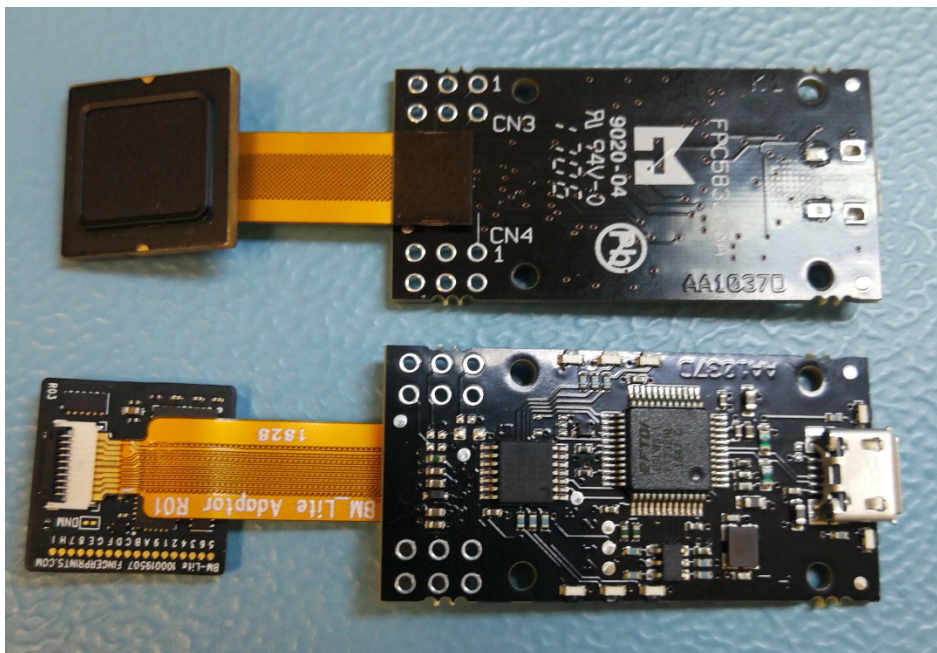
Date:  
**03/Apr/2020**  
Page:  
**10(21)**

## FINGERPRINTS

### 3.3 Run reference Python Script to test the BM-Lite

With the BM-Lite release comes a .zip file named “FPC-BEP-SW-DELIVERY\_PYTHON\_SCRIPTS\_fpc\_bm\_lite\_1.2.0.006.zip”. This zip file contains the Python scripts necessary to test the functionalities of the BM-Lite module.

- Connect your BM-Lite module to the FPC5832 board as shown below.



- Unzip the “python” folder from the .zip file into the directory of your choice.
- Open a terminal window and navigate into the “python” folder you just unzipped.
- Run the Python script called “bep\_ref.py” using the following command and argument:  
“sudo python3 ./bep\_ref.py -i spi”



Doc number:  
**100021008**  
Doc class:  
**Instruction**

Doc revision:  
**7.2**

Doc state:  
**Approved**  
Approver:

Date:  
**03/Apr/2020**  
Page:  
**11(21)**

## FINGERPRINTS

```
~/FPC-BEP-SW-DELIVERY_PYTHON_SCRIPTS_fpc_bm_lite_1.2.0.0...
File Edit View Search Terminal Help
:~/FPC-BEP-SW-DELIVERY_PYTHON_SCRIPTS_fpc_bm_lite_1.2.0.00
6/python$ sudo python3 bep_ref.py -i spi
```

The script will now search through your COM ports and connect to the correct one. When the BEP host interface script starts, note that it states which COM port and baud rate it's using. These and other properties can be changed when running the script using the appropriate arguments as listed in the BM-Lite integration document.



Doc number:  
100021008  
Doc class:  
Instruction

Doc revision:  
7.2

Doc state:  
Approved  
Approver:

Date:  
03/Apr/2020  
Page:  
12(21)

## FINGERPRINTS

```
~/FPC-BEP-SW-DELIVERY_PYTHON_SCRIPTS_fpc_bm_lite_1.2.0.0...
File Edit View Search Terminal Help
BEP host interface
Com port: /dev/ttyUSB0 [speed: 115200]
Timeout: 6 s
-----
Possible options:
a: Enroll finger
b: Capture and identify by template
c: Remove all templates from flash
d: Save template to flash and remove from RAM
e: Remove template from flash
f: Template storage sub-menu
g: System sub-menu
h: Sensor sub-menu
i: Basic commands sub-menu
q: Exit
Option>>
```

You are now ready to try out the BM-Lite module. For examples on how to use the BEP host interface script, see the final section of this document.



Doc number:  
100021008  
Doc class:  
Instruction

Doc revision:  
7.2

Doc state:  
Approved  
Approver:

Date:  
03/Apr/2020  
Page:  
13(21)

## FINGERPRINTS

# 4 Setup on Windows 7/10

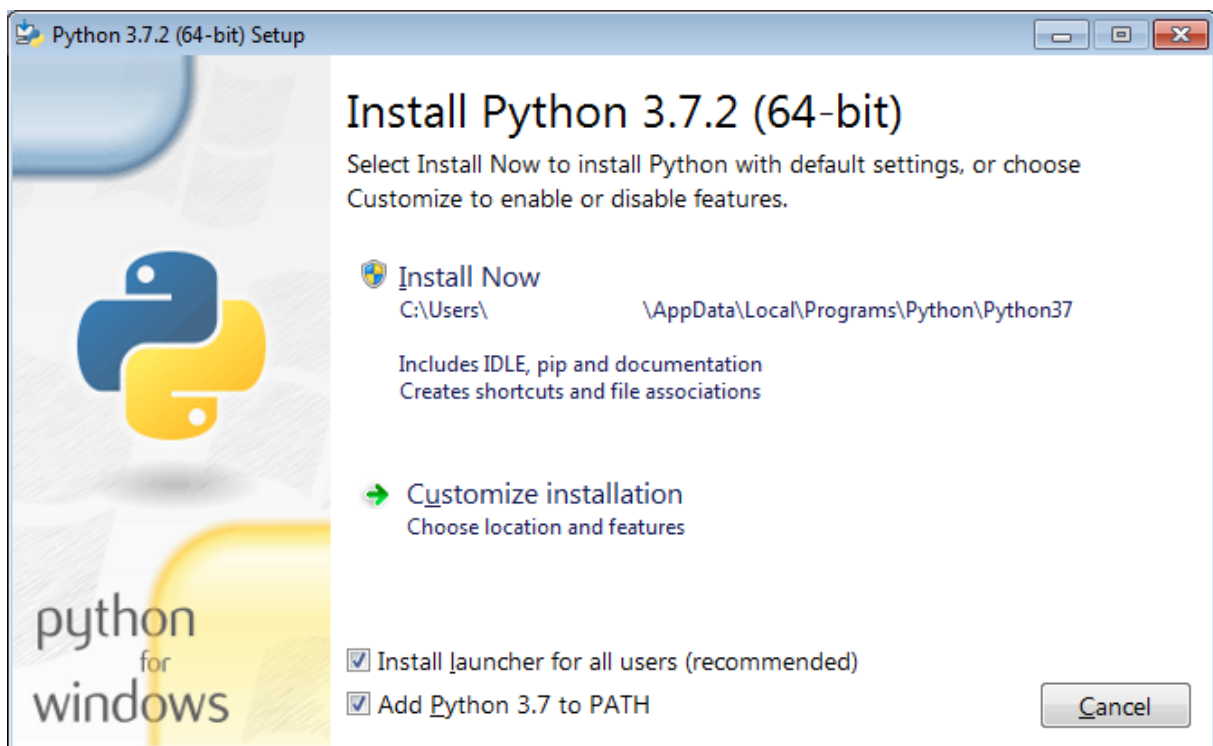
## 4.1 Install Python3

You can find the latest release of Python3 on Python's website:

<https://www.python.org/downloads/>

Recommended version is 3.4 or later.

- Click download on the release version you want and then, under "Files", choose the appropriate installer for your system (e.g "Windows x86-64 executable installer" for a 64 bit Windows system.)
- Run the installer executable and make sure to tick the boxes for "Install launcher for all users" and "Add Python to PATH". Then press "Install now"



This will install Python3 and all the standard libraries as well Python's package manager, pip, which you will use to install all the required libraries that are not included by default.

- To make sure that the installation was successful, open a command prompt and type "py" to start Python. If everything works as it should, it will look something like this:



Doc number:  
**100021008**  
Doc class:  
**Instruction**

Doc revision:  
**7.2**

Doc state:  
**Approved**  
Approver:

Date:  
**03/Apr/2020**  
Page:  
**14(21)**

## FINGERPRINTS

```
C:\Windows\system32\cmd.exe - py
Microsoft Windows [Version 6.1.7601]
Copyright (c) 2009 Microsoft Corporation. All rights reserved.

C:\Users\>py
Python 3.7.2 (tags/v3.7.2:9a3ffc0492, Dec 23 2018, 23:09:28) [MSC v.1916 64 bit
<AMD64>] on win32
Type "help", "copyright", "credits" or "license" for more information.
>>>
```

### 4.2 Install the required packages

The required packages for using the bep\_ref.py script together with the BM-Lite on Windows are:

- pexpect
  - pyserial
  - numpy
  - pillow
  - pyftdi
- Install these by using the pip install command in a command prompt:  
"pip install <package name>"  
For example: "pip install pexpect"

The package manager will fetch and install the package for you. Repeat the install command for all of the above packages.



Doc number:  
**100021008**  
Doc class:  
**Instruction**

Doc revision:  
**7.2**

Doc state:  
**Approved**  
Approver:

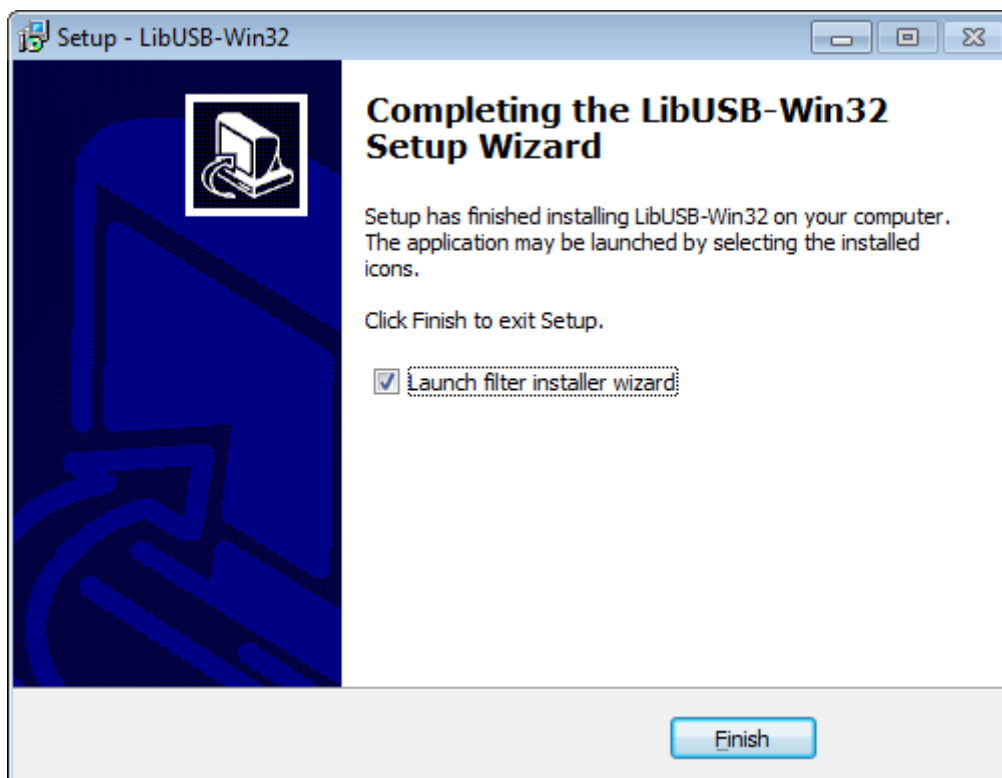
Date:  
**03/Apr/2020**  
Page:  
**15(21)**

## FINGERPRINTS

### 4.3 Installing an SPI filter for the FTDI board.

In addition to the packages above, a filter driver for SPI is needed for using the FPC5832 board with Windows.

- Connect your FPC5832 board to your computer using a USB cable. Drivers will automatically start installing. When the drivers have finished installing, you're ready to install the SPI filter.
- Download "libusb-win32-bin-1.2.6.0" from:  
<https://sourceforge.net/projects/libusb-win32/files/libusb-win32-releases/1.2.6.0/>
- Run "install-filter-win.exe" and follow the installation wizard until the installation is complete. Then choose "Launch filter installer wizard" before clicking finish.



- This will open the "libusb-win32 installer" in a new window. Choose "Install a device filter" and press "Next".



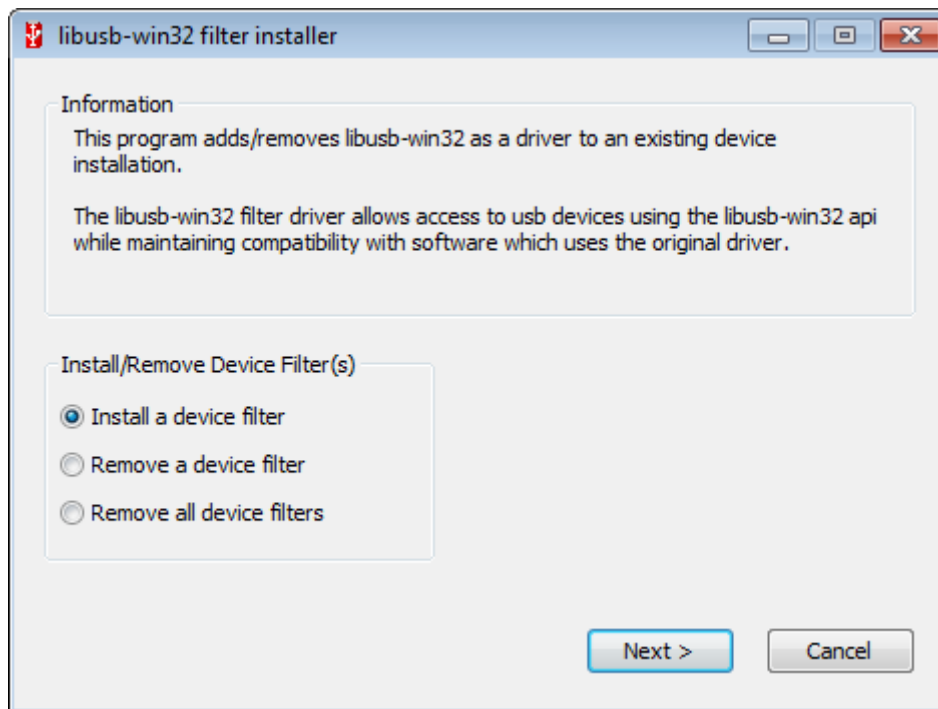
Doc number:  
**100021008**  
Doc class:  
**Instruction**

Doc revision:  
**7.2**

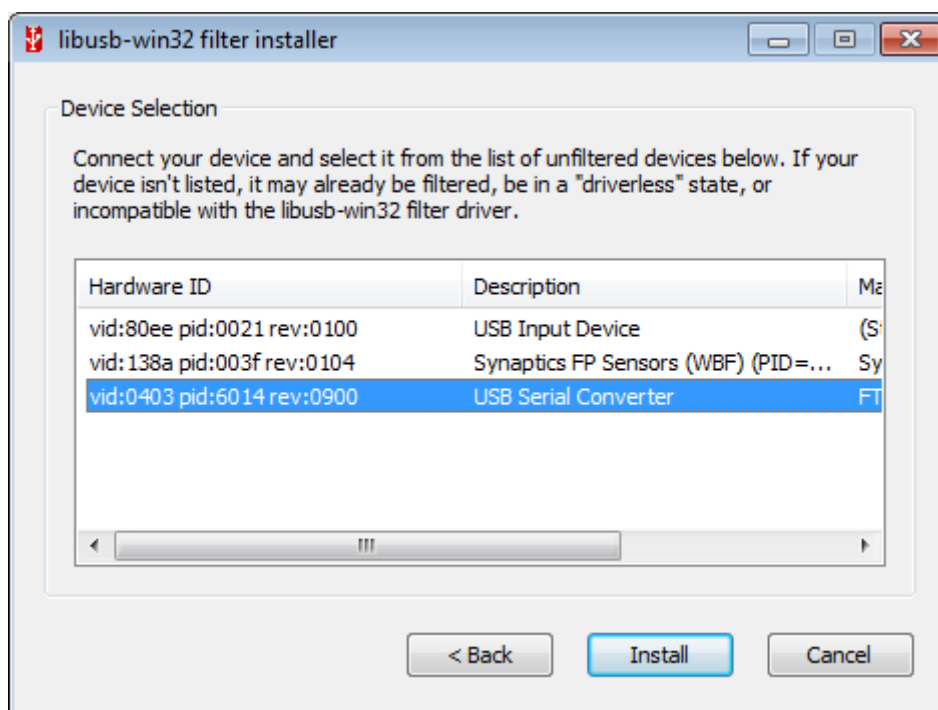
Doc state:  
**Approved**  
Approver:

Date:  
**03/Apr/2020**  
Page:  
**16(21)**

## FINGERPRINTS



- In the list of devices, the FPC5832 board is the one with the description “USB Serial Converter” and the manufacturer “FTDI”. Select that device and press “Install”.







Doc number:  
**100021008**  
Doc class:  
**Instruction**

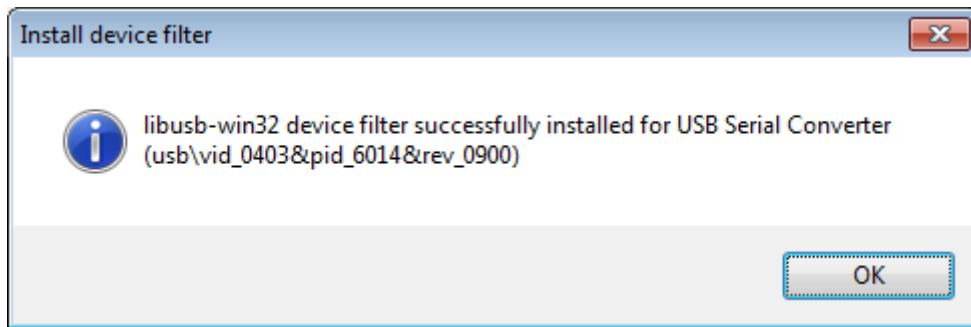
Doc revision:  
**7.2**

Doc state:  
**Approved**  
Approver:

Date:  
**03/Apr/2020**  
Page:  
**17(21)**

## FINGERPRINTS

- When the filter installation is done, you will receive a confirmation on the successful installation:

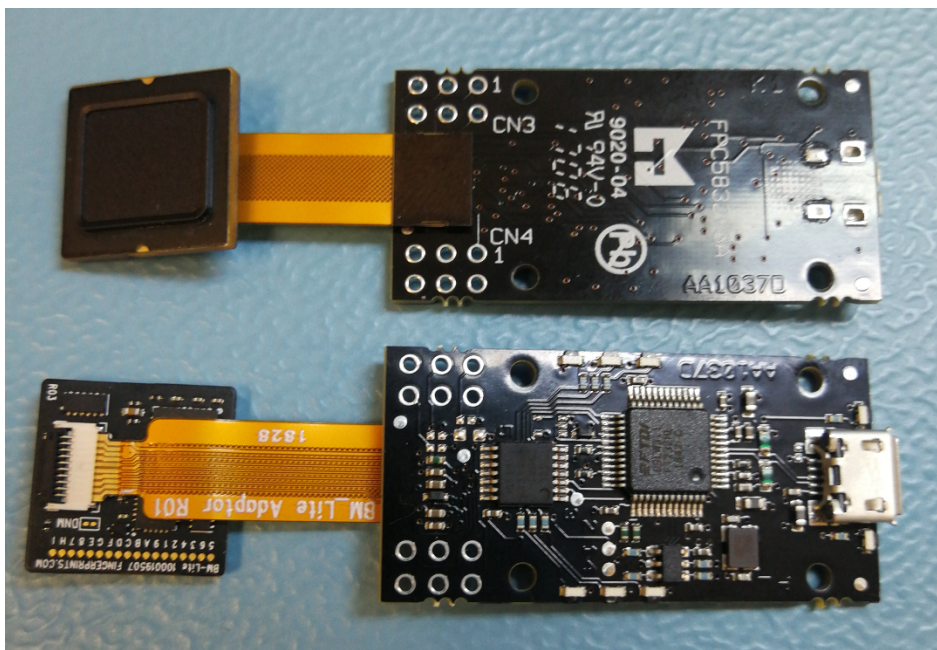


- Close the filter installer. Your FPC5832 board is now ready to be used.

### 4.4 Run reference Python Script to test the BM-Lite

With the BM-Lite release comes a .zip file named “FPC-BEP-SW-DELIVERY\_PYTHON\_SCRIPTS\_fpc\_bm\_lite\_1.2.0.006.zip”. This zip file contains the Python scripts necessary to test the functionalities of the BM-Lite module.

- Connect your BM-Lite module to the FPC5832 board as shown below.



- Unzip the “python” folder from the .zip file into the directory of your choice.
- Open a command prompt and navigate into the “python” folder you just unzipped.



Doc number:  
**100021008**  
Doc class:  
**Instruction**

Doc revision:  
**7.2**

Doc state:  
**Approved**  
Approver:

Date:  
**03/Apr/2020**  
Page:  
**18(21)**

## FINGERPRINTS

- Run the Python script called “bep\_ref.py” using the following command and argument:  
‘py ./bep\_ref.py -i spi’

The screenshot shows a Windows Command Prompt window titled "C:\Windows\system32\cmd.exe". The command prompt is open at the directory "C:\Users\...\Desktop\python". The command entered is "py ./bep\_ref.py -i spi". The command prompt is currently empty, indicating the command has been entered but not yet executed.

The script will now search through your COM ports and connect to the correct one. When the BEP host interface script starts, note that it states which COM port and baud rate it's using. These and other properties can be changed when running the script using the appropriate arguments as listed in the BM-Lite integration document.



Doc number:  
100021008  
Doc class:  
Instruction

Doc revision:  
7.2

Doc state:  
Approved  
Approver:

Date:  
03/Apr/2020  
Page:  
19(21)

## FINGERPRINTS

```
CA: Command Prompt - py bep_ref.py -i spi
BEP host interface
Com port: COM24 [speed: 115200]
Timeout: 6 s

Possible options:
a: Enroll finger
b: Capture and identify by template
c: Remove all templates from flash
d: Save template to flash and remove from RAM
e: Remove template from flash
f: Template storage sub-menu
g: System sub-menu
h: Sensor sub-menu
i: Basic commands sub-menu
q: Exit

Option>> _
```

You are now ready to try out the BM-Lite module. For examples on how to use the BEP host interface script, see the next section of this document.



Doc number:  
100021008  
Doc class:  
Instruction

Doc revision:  
7.2

Doc state:  
Approved  
Approver:

Date:  
03/Apr/2020  
Page:  
20(21)

## FINGERPRINTS

## 5 How to use the Python script 'bep\_ref.py'

### 5.1 Arguments for running bep\_ref.py

Arguments	Description
-i, --interface	Host interface for communication with BM-Lite. Default is 'uart'. Other alternatives: 'spi' for the FPC5832 FTDI-card, 'rpispi' for the Raspberry Pi SPI
-p, --port	Input port name (COMX, /dev/ttyACMX, /dev/ttyUSBX)
-s, --speed	Input communication speed
-t, --timeout	Timeout for 'UART receive' in seconds (>=2)
--id	Partial or full Jlink device id
--debug	Print debug information
--log	Collect KPI data and target logs. Port number must be entered "--log=[PORT]"
--gui	Start application with graphical user interface

### 5.2 SPI Startup example

(Replace the comport name with the one you are using)

Linux: `sudo python3 ./bep_ref.py -i spi -p /dev/ttyUSB0`

Win: `py ./bep_ref.py -i spi -p COM5`

### 5.3 UART Startup example

(Replace the comport name with the one you are using)

Linux: `sudo python3 ./bep_ref.py -i uart -p /dev/ttyUSB0 -s 115200`

Win: `py ./bep_ref.py -i uart -p COM5 -s 115200`

(Note that all UART communication must be at baud rate 115200, from SW version 1.2. For older SW versions the default baud rate is 921600.)

### 5.4 Example procedures

After starting the bep\_ref.py application, "Possible options" will be presented for controlling the BM-Lite. Please follow the below procedures in numerical order.



Doc number:  
**100021008**  
Doc class:  
**Instruction**

Doc revision:  
**7.2**

Doc state:  
**Approved**  
Approver:

Date:  
**03/Apr/2020**  
Page:  
**21(21)**

## FINGERPRINTS

### 5.4.1 Sanity check

1. In the main options menu of bep\_ref.py, send command 'g' for 'System sub-menu' and then option 'a' for 'Get software version'.
2. If the communication is working properly, FPC BM-Lite version number will be received.

### 5.4.2 Performing Enroll

1. In the main options menu of bep\_ref.py, send command 'a' for "Enroll finger".
2. You will receive the messages "Enroll Started" and "Place finger on the sensor".
3. Place your finger on the sensor. There is a timeout on this action which will trigger unless there is a finger placed on the sensor after a given period of time, default is 6 seconds. If this happens, just try again.
4. When you have placed your finger on the sensor, you will receive the messages "Finger captured", "Image enrolled, X enrollments left" and "Waiting for finger not present".
5. Lift your finger from the sensor.
6. Repeat step 3-5 until enough images have been saved for a successful enrollment. This will be communicated with the message "Enroll finished. Finger enrolled".
7. Press enter to return to the main options menu.
8. To store your fingerprint template in the flash memory, send command 'd' for "Save template to flash and remove from RAM".
9. Enter a number which will be the enrolled fingerprint templates ID-number.
10. You will receive the message "Template saved with id 4. Template removed from RAM." Press enter to return to the main options menu. Your finger is now enrolled.

### 5.4.3 Performing Identify on an enrolled finger

1. In the main options menu of bep\_ref.py, send command 'b' for "Capture and identify by template".
2. You will receive the message "Place finger on the sensor".
3. Place your finger on the sensor. There is a timeout on this action which will trigger unless there is a finger placed on the sensor after a given time period. If this happens, just try again.
4. When you've placed your finger on the sensor, you will receive the messages "Finger captured", "Image extracted" and "Identify: match against id X" where X is the ID-number of your fingerprint template. If your finger does not match an enrolled template, you will instead receive the message "Identify: no match".
5. If no fingerprint templates are enrolled and you attempt to perform Identify, you will receive the error message "Failure. Result code -7, "Resources are not available". If that happens, please repeat the enrollment procedure to make sure you have successfully enrolled a fingerprint.
6. Congratulations, your product is now safeguarded by the most secure fingerprint sensor on the market.

# Mouser Electronics

Authorized Distributor

Click to View Pricing, Inventory, Delivery & Lifecycle Information:

Fingerprints:

100022424