

# Koki'o Project Case

by Cowfish Studios

An open-frame enclosure kit for panoramic viewing of your PCB

You've prototyped your Printed Circuit Board (PCB) design: It blinks, it speaks, it's IoT-enabled and it breathes fire (maybe it doesn't breathe fire...). Now it's time to get the PCB made and put that awesome new project of yours into an enclosure. Unfortunately, all you have is a generic project case that appeared to come straight outta the 80's.

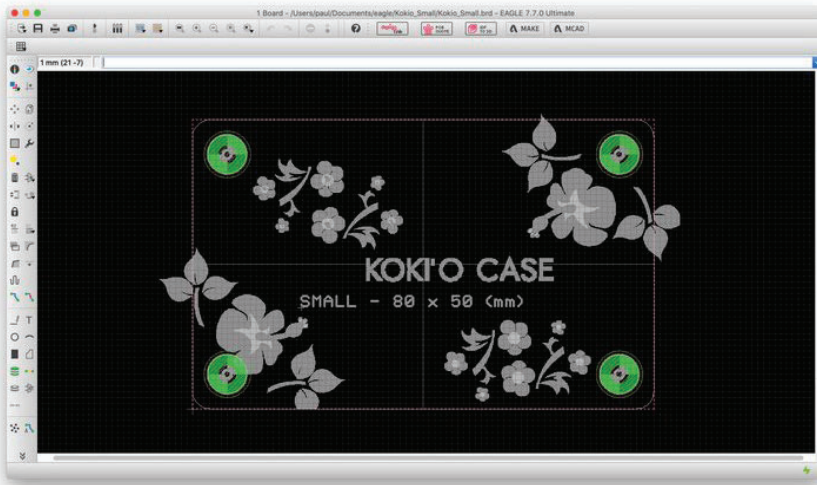
Introducing: **The Koki'o Project Case**



The Koki'o project case is an open frame design which allows for panoramic viewing of your PCB while protecting the board from harmful contact with hands or tools. The open design also allows entry of air and moisture, which is great for applications which require environmental exposure (i.e. sensors).



A set of PCB template libraries are available for most major EDA tools (Eagle, Altium, KiCad) right out of the box - no pun intended.

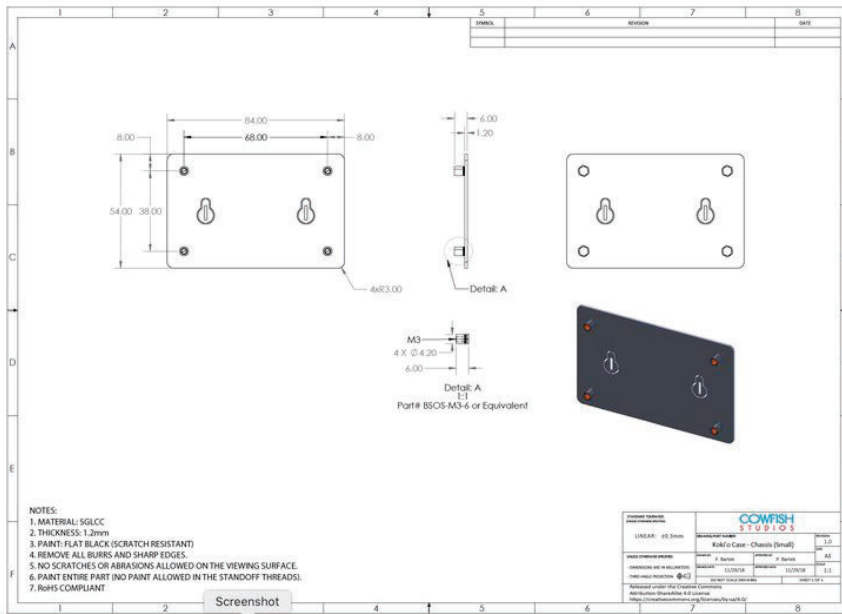
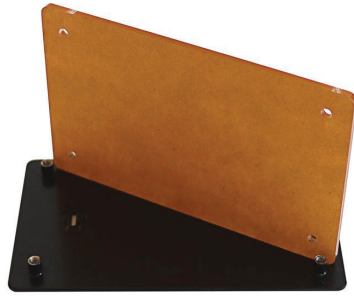


*example PCB design*

## Features & Specifications

- Choice of Four Versions:
  - Small 80 mm x 50 mm (3.15" x 1.97")
  - Medium 100 mm x 60 mm (3.94" x 2.36")
  - Large 120 mm x 70 mm (4.72" x 2.76")
  - Extra Large 140 mm x 80 mm (5.51" x 3.15")
- Durable 18-gauge steel chassis, black powder paint finish
  - Keyhole slots for mounting
- Top plate formed from acrylic (PMMA)
- PCB templates compatible with most major EDA tools (Eagle, Altium, KiCad)
- 3D models available
- Keyhole slots for wall mounting
- Ideal for prototyping or permanent installations

Adjustable lid to accommodate expansion



# Mouser Electronics

Authorized Distributor

Click to View Pricing, Inventory, Delivery & Lifecycle Information:

Cowfish Studios:

[CS-KOKIO-LG-01](#) [CS-KOKIO-MED-01](#) [CS-KOKIO-SM-01](#) [CS-KOKIO-XL-01](#)