

PIM-190-C

User Manual





This product uses vivid color, high-definition display screen, and smooth operation touch screen, with wireless design.

This manual offers technical information about the product.

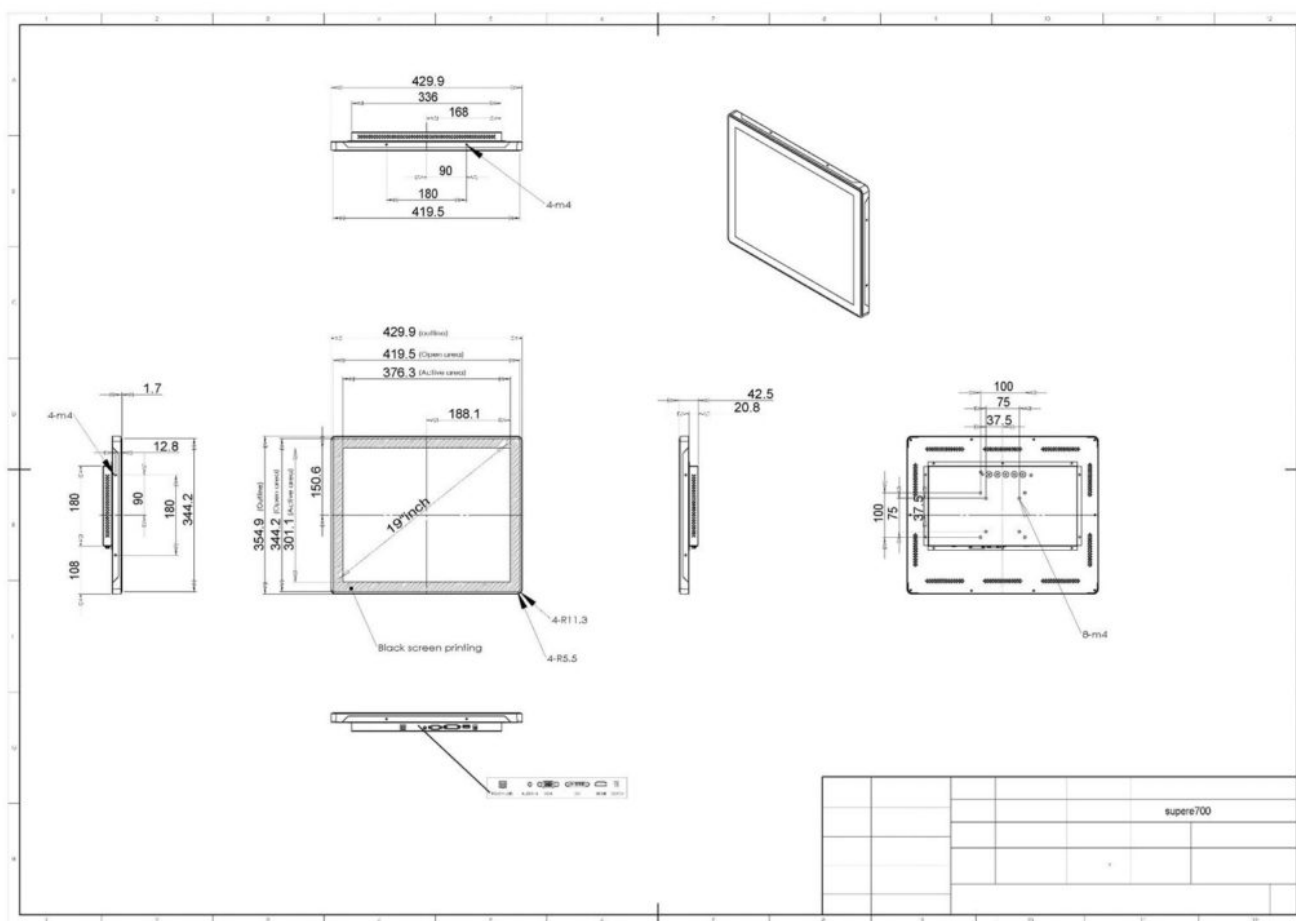
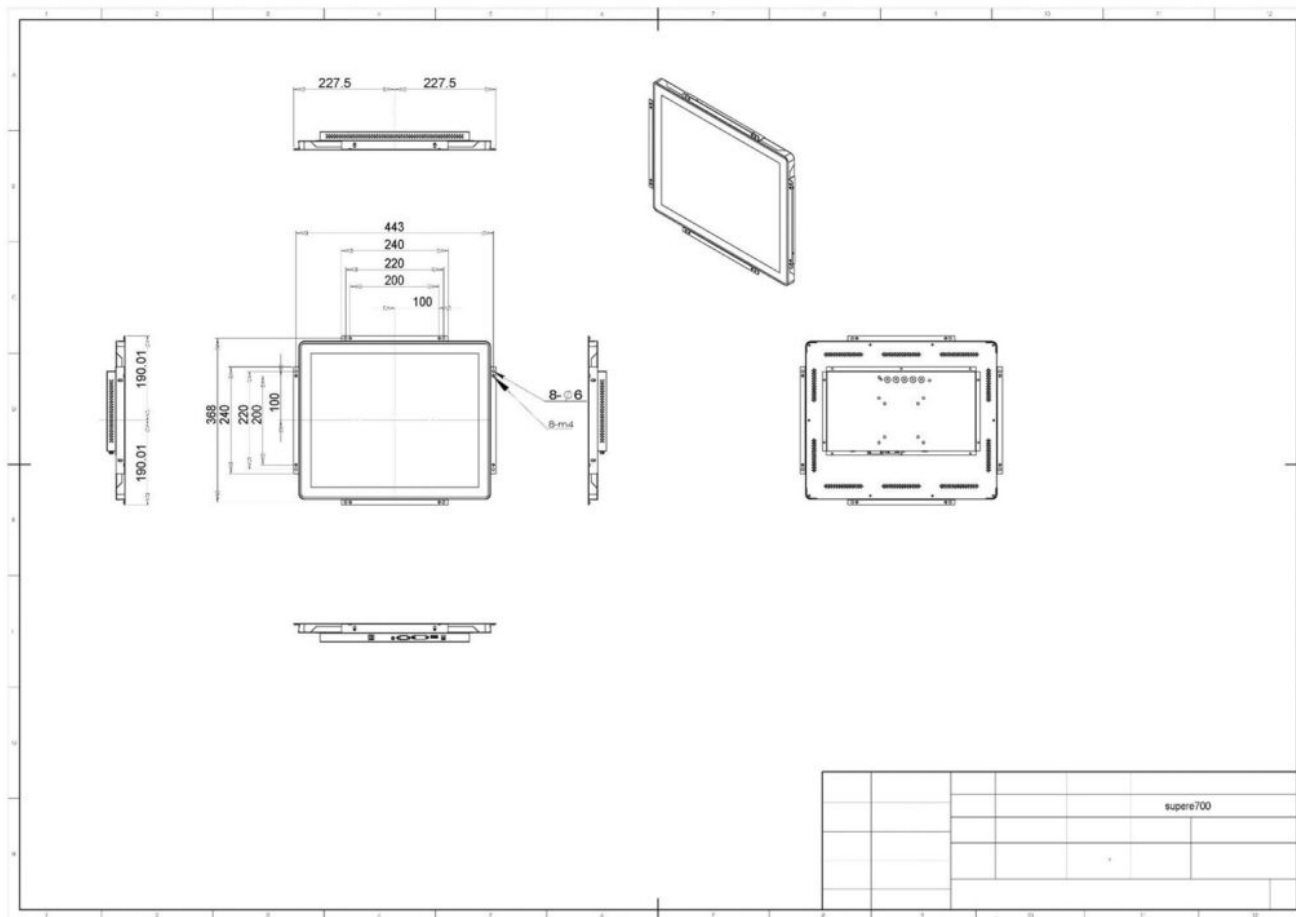
Specification

Backlight	Led
Brightness	250 cd/m2
Contrast Ratio	1000:1
Viewing Angle	Horizontal:170°/ Vertical: 160°

Response Time	5ms (GTG)
Display Color	16.7M Colors
Display Resolution	1280×1024 (4:3)
Refresh Frequency	60Hz
Input Resolution	1280×1024 @ 60Hz
Connector	VGA / DVI / HDMI
• OSD	
OSD Control	Button
OSD Language	English, Chinese
• Touch Screen Parameters	
Glass	3mm Tempered Glass with Black Silk-screen
Touch Point	10
Touch Technology	Projecting Capacitance (G+G)
Type of Pen	Fingers, Hands with Gloves, Conductive Stylus
Waterproof	Touch surfaces will not be affected by water droplets or steam
Calibration	No Calibration Tool
Response Time	7ms-12ms
Connect	USB2.0 (Type-B)
Multi Touch Protocol Support	Windows
Operating System	Win 7/8, Android, Linux
• Mechanical Parameters	
Size	431 x 355.8 x 42.5 mm
Packaging Size	680 x 450 x 150 mm
Weight (about)	4.5 kg / 6.5 kg
Hanging Method	VESA, MIS-D, 100, C

• Electrical Parameters	
Power Input	DC in: DC 12V3A (50/60 Hz)
Power Supply	≤ 16W (typ.)
Standby Power	≤ 2W (typ.)
Built in Speaker	None
• Environmental Parameters	
Work Environment	0 °C ~ 40 °C, 90% RH
Storage Environment	-20 °C ~ 60 °C, 90% RH
• Accessories	
Others	Bracket /Power Line /VGA Line/USB Line/Power Adapter

Product structure diagram



How to Get Support

Please feel free to contact us with any questions, queries or suggestions.

If your question is about technical support or troubleshooting for one of our products, we kindly ask you to first check our documentation for a possible solution.

If you cannot find the solution you are looking for then please write to contact@chipsee.com providing all possible details.

Mouser Electronics

Authorized Distributor

Click to View Pricing, Inventory, Delivery & Lifecycle Information:

[Chipsee:](#)

[CS-D190](#)