

# PIM-150-C

## User Manual







This product uses vivid color, high-definition display screen, and smooth operation touch screen, with wireless design.

This manual offers technical information about the product.

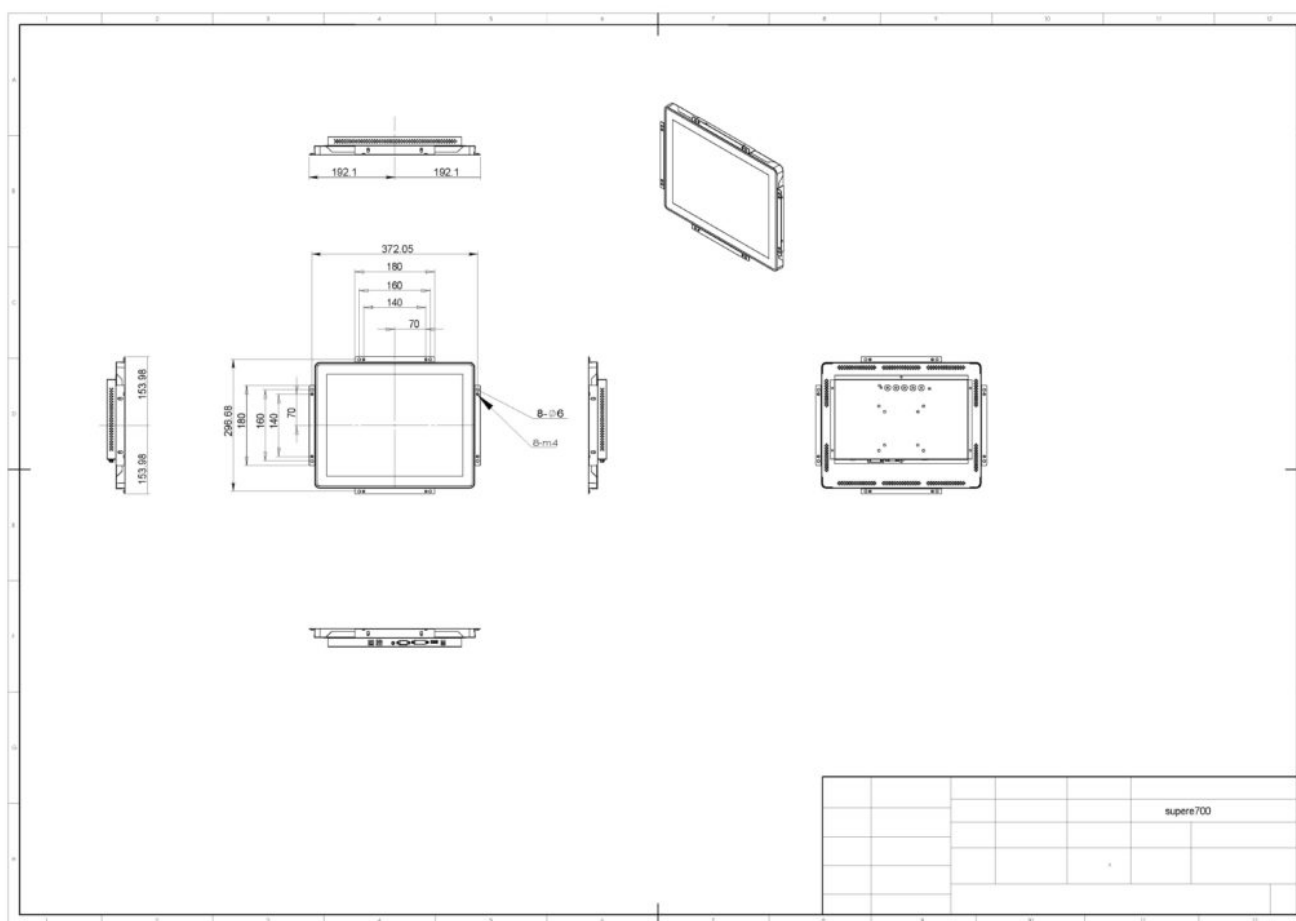
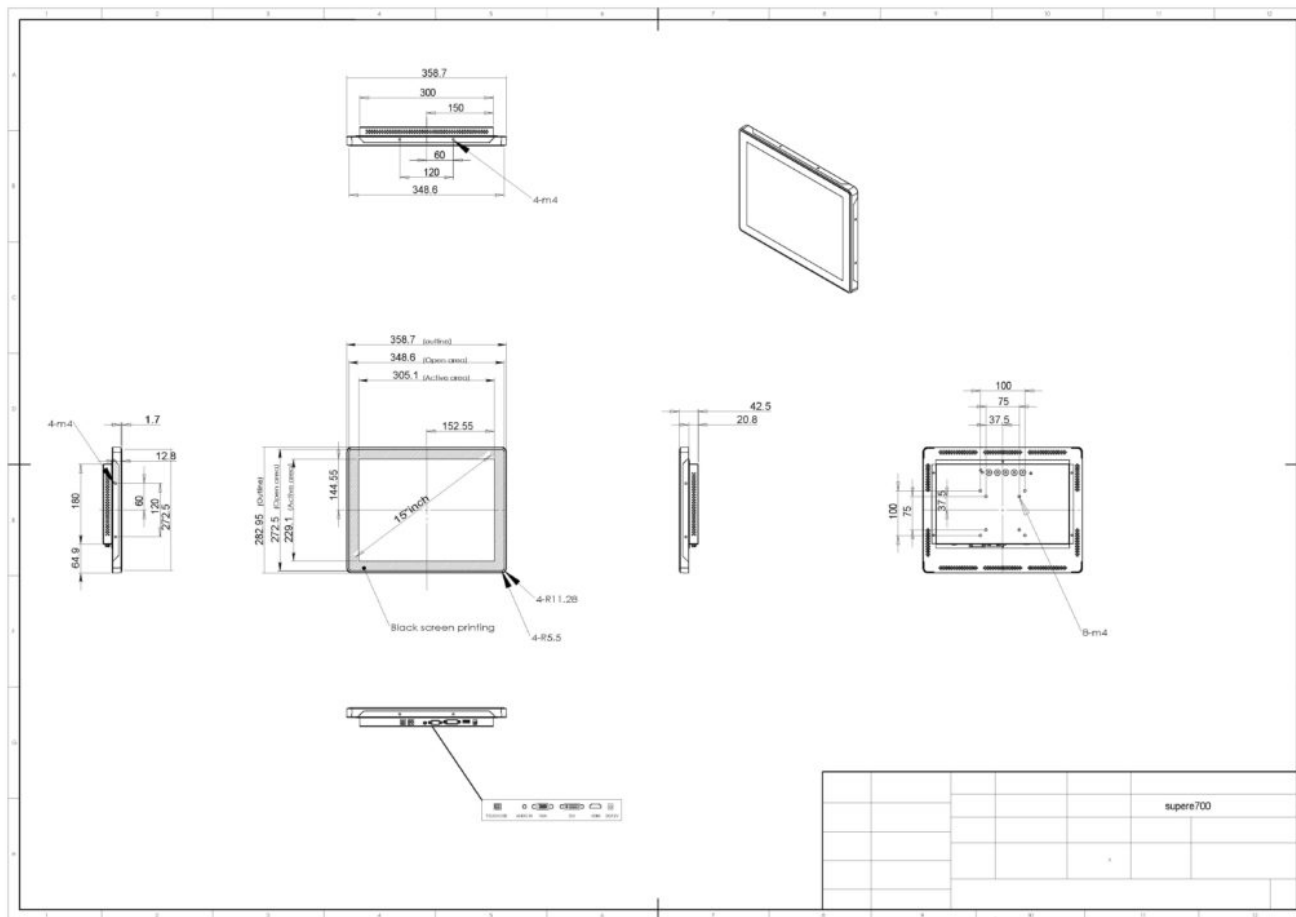
## Specification

<b>Backlight</b>	Led
<b>Brightness</b>	300 cd/m2
<b>Contrast Ratio</b>	1500:1
<b>Viewing Angle</b>	Horizontal:170°/ Vertical: 170°

<b>Response Time</b>	35ms (GTG)
<b>Display Color</b>	16.2M Colors
<b>Display Resolution</b>	1024 x 768 (4:3)
<b>Refresh Frequency</b>	60Hz
<b>Input Resolution</b>	1024 x768 @ 60Hz
<b>Connector</b>	VGA / DVI / HDMI
• OSD	
<b>OSD Control</b>	Button
<b>OSD Language</b>	English, Chinese
• Touch Screen Parameters	
<b>Glass</b>	3mm Tempered Glass with Black Silk-screen
<b>Touch Point</b>	10
<b>Touch Technology</b>	Projecting Capacitance (G+G)
<b>Type of Pen</b>	Fingers, Hands with Gloves, Conductive Stylus
<b>Waterproof</b>	Touch surfaces will not be affected by water droplets or steam
<b>Calibration</b>	No Calibration Tool
<b>Response Time</b>	7ms-12ms
<b>Connect</b>	USB2.0 (Type-B)
<b>Multi Touch Protocol Support</b>	Windows
<b>Operating System</b>	Win 7/8, Android, Linux
• Mechanical Parameters	
<b>Size</b>	352 x 276 x 47 mm
<b>Packaging Size</b>	440 x 325 x 90 mm
<b>Weight (about)</b>	3.5kg/4.5kg
<b>Hanging Method</b>	VESA, MIS-D, 100, C

• Electrical Parameters	
<b>Power Input</b>	DC in: DC 12V3A (50/60 Hz)
<b>Power Supply</b>	≤ 14W (typ.)
<b>Standby Power</b>	≤ 2W (typ.)
<b>Built in Speaker</b>	None
• Environmental Parameters	
<b>Work Environment</b>	0 °C ~ 40 °C, 90% RH
<b>Storage Environment</b>	-20 °C ~ 60 °C, 90% RH
• Accessories	
<b>Others</b>	Bracket /Power Line /VGA Line/USB Line/Power Adapter

## Product structure diagram



# How to Get Support

Please feel free to contact us with any questions, queries or suggestions.

If your question is about technical support or troubleshooting for one of our products, we kindly ask you to first check our documentation for a possible solution.

If you cannot find the solution you are looking for then please write to [contact@chipsee.com](mailto:contact@chipsee.com) providing all possible details.

# Mouser Electronics

Authorized Distributor

Click to View Pricing, Inventory, Delivery & Lifecycle Information:

[Chipsee:](#)

[CS-D150](#)