

**7W CONSTANT POWER  
ELP07-UNV-K**

**Certified in  
TITLE 20**  
Appliance Efficiency Database

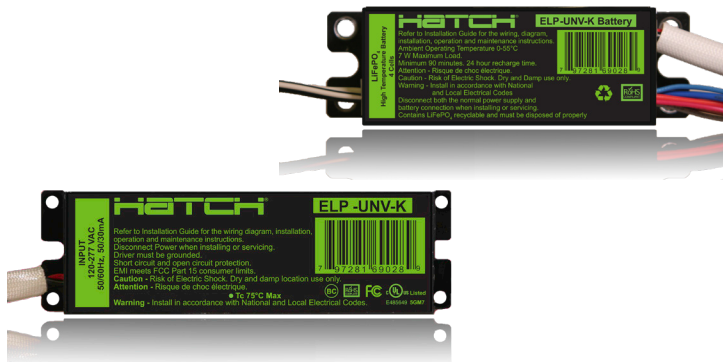
**RoHS  
COMPLIANT**

**UL US LISTED**

**FC**

**BC**

## CEC COMPLIANT HIGH-EFFICIENCY LED EMERGENCY DRIVERS



### ADVANTAGES

- **Certified in CA TITLE 20 Appliance Efficiency Database**
- **Energy efficient LiFePO<sub>4</sub> Battery**
- **UL Listed for field and factory installation**
- **For use with emergency only fixtures as well as new and existing fixtures.**
- **Two-piece design for added flexibility**

### CERTIFICATIONS

- CA T20 Appliance Efficiency Database
- ROHS
- UL Listed for field and factory installation
- FCC, 47CFR Part 15

### DESCRIPTION

The high-efficiency performance of the Hatch **ELP07-UNV-K** LED Emergency Driver meets California Energy Commission (CEC) Title 20 efficiency requirements and is certified in the CA Title 20 Appliance Efficiency Database.

Hatch **ELP07-UNV-K** allows an LED lighting fixture to be used for normal and emergency operation. In the event of a power failure, the **ELP07-UNV-K** switches to emergency mode and operates the existing fixture for a minimum of 90 minutes.

All of the LED Emergency Drivers in the Hatch line include a test switch with integrated charge indicator and are UL Listed for field or factory installation.

Product specifications are subject to change without notice.

### SPECIFICATIONS

Input Voltage	120-277VAC ± 10%
Frequency	50/60Hz
Output Voltage	20-60 VDC* Class 2
Output Current	350mA @ 20Vdc 120mA @ 58Vdc
Output Power	7W (constant)
Power Factor	>0.9
Emergency Operation	90 Minutes
Recharge Time:	24 hours
Operating Temperature	0 to 55°C
Max Case Temp (Driver)	75°C
Max Amb. Temp (Battery)	55°C
Case Material	Metal
Battery	LiFePO <sub>4</sub> 12.8Vdc
Charging Current	307mA
EMI	FCC, 47CFR Part 15
Protections	Over Voltage, Short Circuit Over Current, Over Temp

\*The output power is valid for output voltage less than or equal to 58V, above that power will drop.

### FEATURES

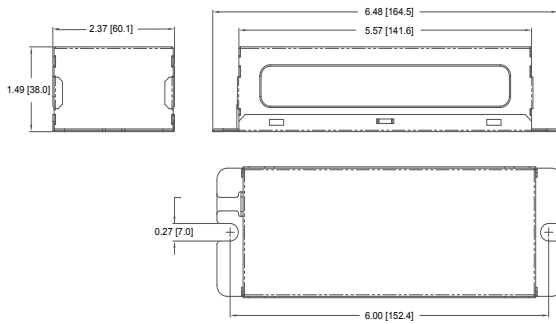
- UL 924 LISTED for US and Canada
- Class 2 Compliant
- UL Listed for field and factory installation
- Separate, energy efficient LiFePO<sub>4</sub> battery
- Includes test switch and integrated charge indicator
- For use with switched or unswitched fixtures
- 5-Year Warranty
- Meets requirements for CEC Compliance
- Suitable for damp locations
- Includes installation guide and luminaire modification label
- For use with surface mounts or recessed type IC or non-IC products listed to UL standards.



## PHYSICAL DIMENSIONS

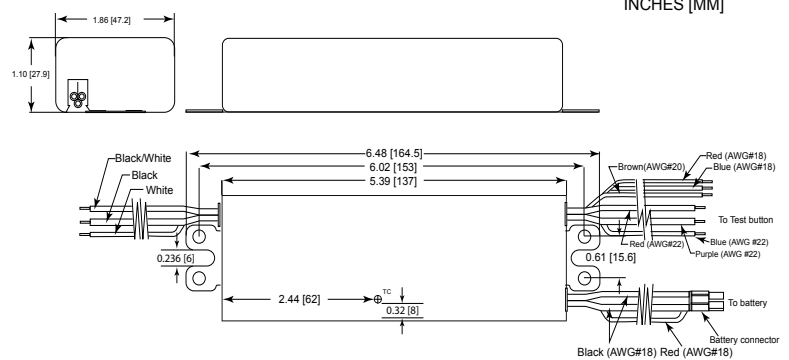
## ELP07-UNV-K Constant Power Emergency Driver

### BATTERY



Length	5.54 [140.8]	Width	2.37 [60.1]
Height	1.49 [38]	Mounting	6.00 [152.4]

### EMERGENCY DRIVER



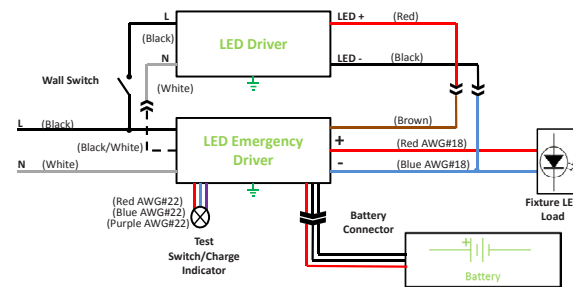
Length	6.48 [164]	Width	1.86 [47.2]
Height	1.10 [27.9]	Mounting	6.02 [153]

### WIRING INFORMATION

Input	12", Black(L), White (N) #18AWG
Output	24", Red(+), Blue (-) #18AWG
LED Driver (N)	12", Black/White #18AWG
LED Driver (+)	24" Brown, #20AWG
Battery Connection	24", Red, Black #18AWG
Test Switch Connections	24", Red, Blue, Purple #22 AWG

### WIRING DIAGRAM

Typical Application



For additional wiring diagrams please visit

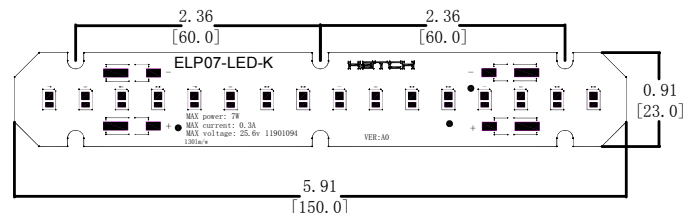
<https://www.hatchlighting.com/elp-alternate-wiring-diagrams>

### PACKAGING INFORMATION

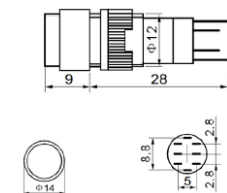
Weight:	2.5 lbs		
QTY:	12pc/carton		
INCLUDES			
LED Emergency Driver	1	LiFePO <sub>4</sub> Battery	1
Wall Plate	1	Tek Screws	6
Luminaire Mod. Label	1	Test Button	1
Screw Wire Connectors	3	Installation Guide	1
Wall Plate Screws	2		

### OPTIONAL LED MODULE

Part #	Max Power	Max Current	Typ. Voltage	Lumens/ Watt	CRI
ELP07-LED-K	7	300mA	24V	~130	>80



### TEST SWITCH



Tolerance:	
>6-30	±0.40
>0-6	±0.25

Recommended hole size for installation: Ø12mm

### SINGLE PIECE CONFIGURATION AVAILABLE

SEE SPECIFICATION SHEET FOR ELP07-2060-UNV



Features an integrated LiFePO<sub>4</sub> Battery  
for added installation flexibility.

# Mouser Electronics

Authorized Distributor

Click to View Pricing, Inventory, Delivery & Lifecycle Information:

[Hatch Lighting:](#)

[ELP07-UNV-K](#)