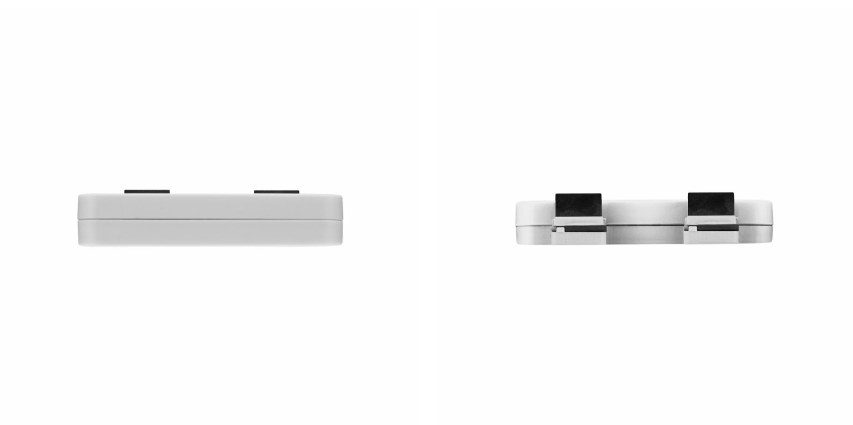
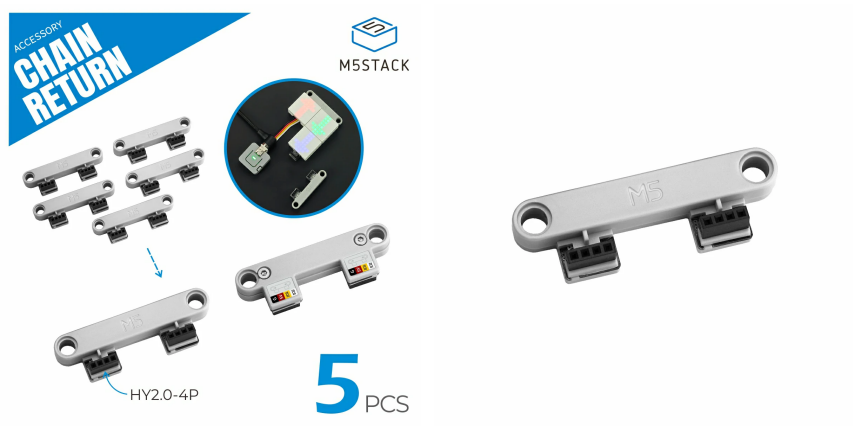


# Chain Return

SKU:A154





## | Description

---

**Chain Return** is a connector designed for the Chain series products and Unit Puzzle, featuring two interconnected HY2.0-4P Grove interfaces and two 4.85mm LEGO-compatible holes. It allows the **side edges** of two Chain series components to be connected, and expands the flexibility and applicability of the M5Stack module system with its excellent durability.

## | Features

---

- Compatible with Chain series products and Unit Puzzle
- Modular connection and assembly
- 2 x 4.85mm LEGO-compatible holes

## | Includes

---

- 5 x Chain Return

## | Applications

---

- Rapid prototyping
- Hardware interaction
- Education and learning
- DIY projects

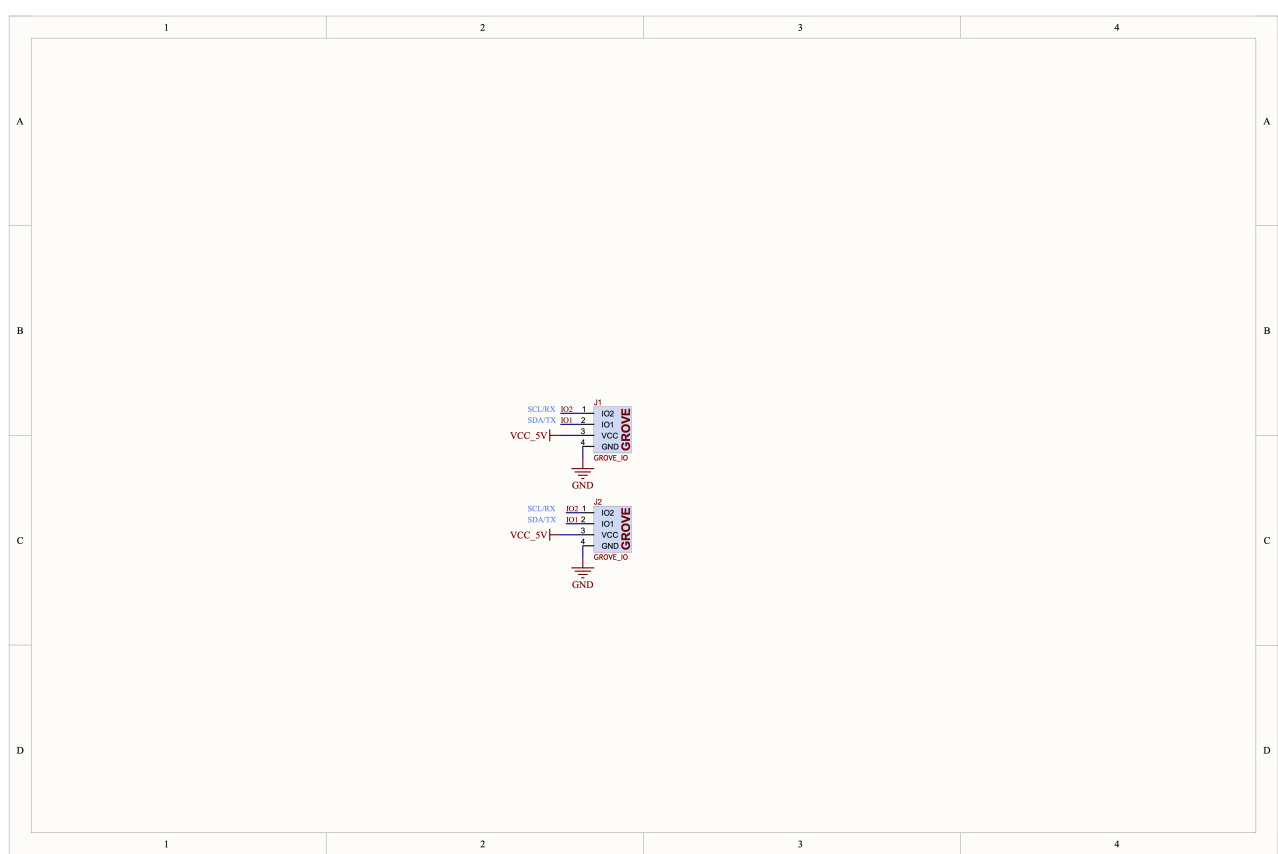
## | Specifications

---

Specification	Parameter
Product Size	48.0 x 14.9 x 9.3mm
Product Weight	15.0g (5 pcs)
Package Size	93.0 x 138.0 x 10.0mm
Gross Weight	18.0g

## Schematics

- Chain Return Schematics PDF

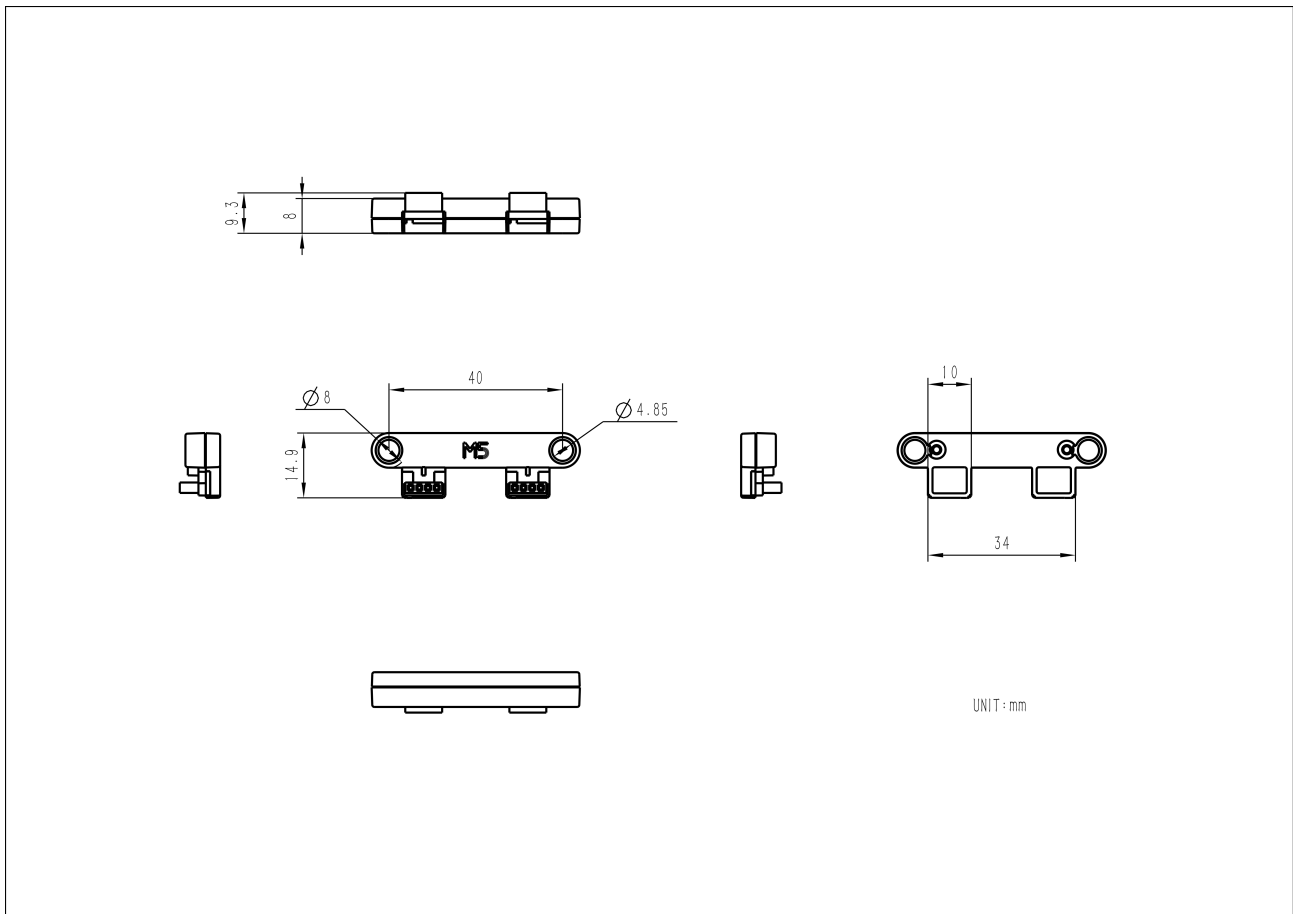


## PinMap

HY2.0-4P	Black	Red	Yellow	White
Chain Return	GND	5V	IO1	IO2

## | Model Size

- [Chain Return Model Size PDF](#)



## | Video

- Chain Return Product Introduction

[A154\\_A155\\_Chain\\_Return\\_Bridge.mp4](#)

# Mouser Electronics

Authorized Distributor

Click to View Pricing, Inventory, Delivery & Lifecycle Information:

[M5Stack:](#)

[A154](#)