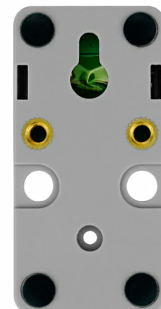


# Atomic Port ABC Base

SKU:A130



## Description

The **Atomic Port ABC Base** is a Grove port expansion base specifically designed for the ATOM series, allowing users to easily connect **I2C**, **UART**, **GPIO** type Unit expansion modules. The product offers multiple mounting options, such as hanging, LEGO connections, and screw fixation. It is suitable for building multifunctional mini-node controllers and other scenarios.

## Features

- Compatible with PORT A/B/C (I2C/GPIO/UART)
- Compatible with ATOM series hosts

## Includes

- 1 x Atomic Port ABC Base
- 1 x Pinout Diagram

## Applications

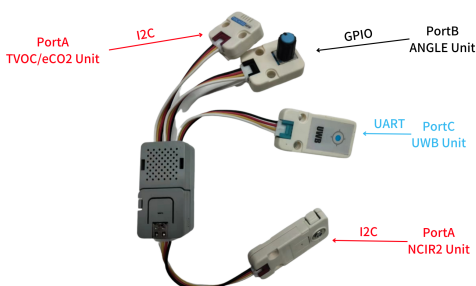
- Multifunctional control nodes

## Specifications

Specification	Parameter
Supported Sensor Interfaces	I2C, UART, GPIO
Operating Temperature	0 ~ 40°C
Supported ATOM Models	Atom-Matrix, Atom-Lite, ATOMS3, AtomS3-Lite
Product Dimensions	64 x 24 x 29mm
Package Dimensions	91 x 42 x 24.5mm
Product Weight	5g
Gross Weight	10g

## Learn

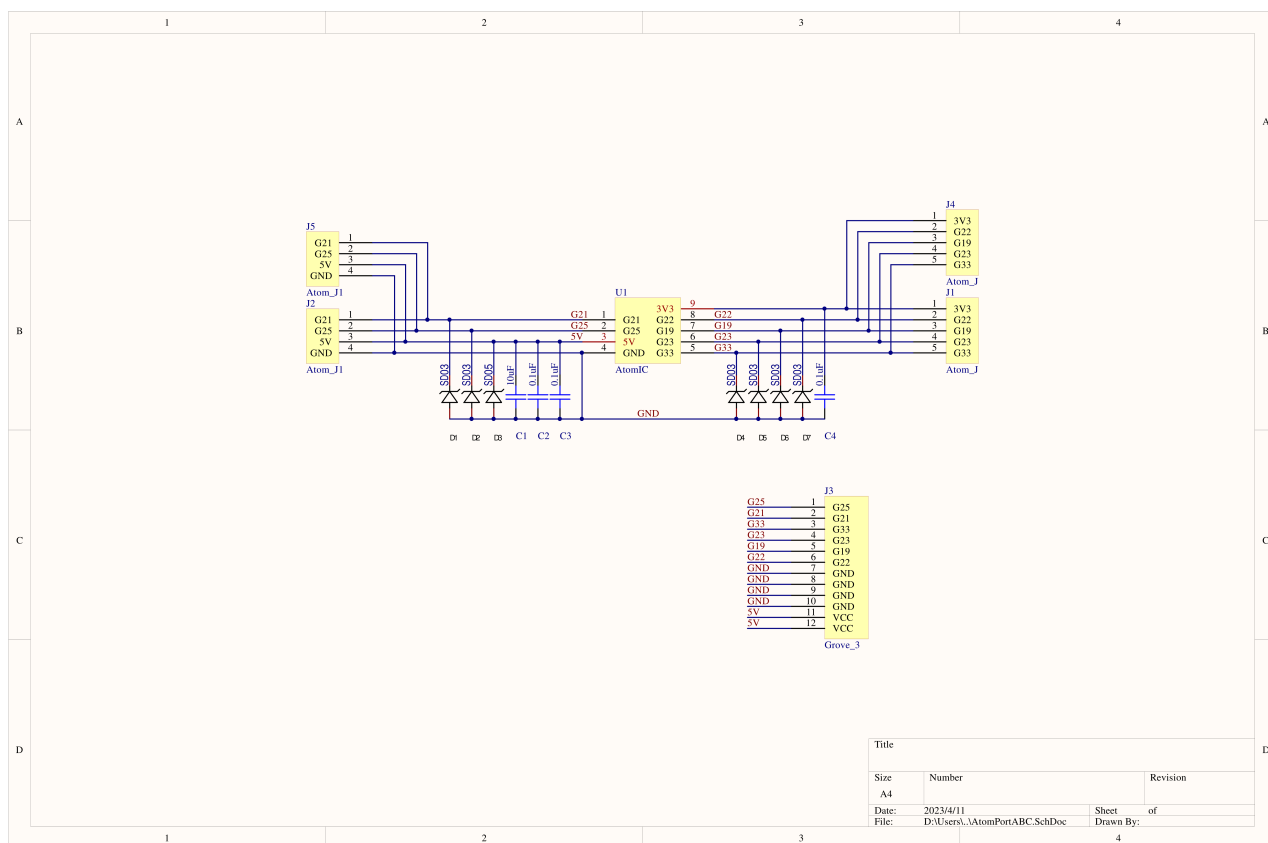
- Wiring Diagram



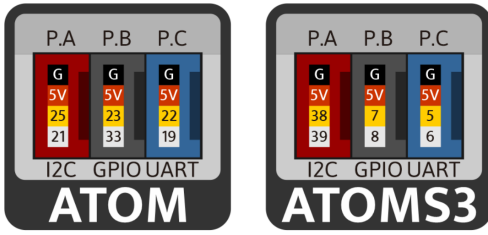
# | Schematicss

---

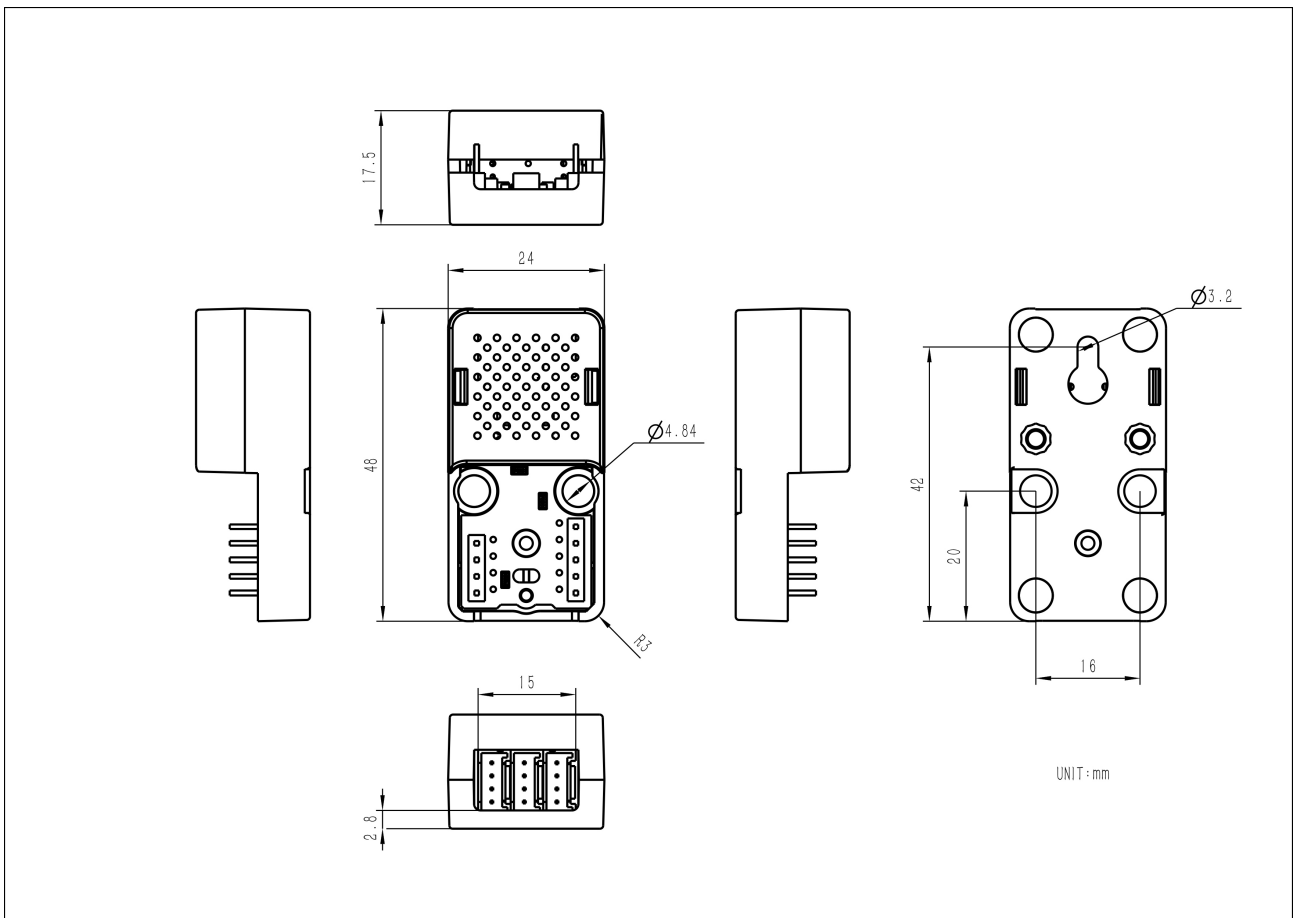
- [Atomic Port ABC Base Schematics PDF 01](#)
- [Atomic Port ABC Base Schematics PDF 02](#)



## PinMap



## Model Size



# Mouser Electronics

Authorized Distributor

Click to View Pricing, Inventory, Delivery & Lifecycle Information:

[M5Stack:](#)

[A130](#)