

XBIB-U-DEV Reference Guide

20 Pin Header
Maps to standard through hole XBEE pins

Through Hole XBee Sockets

Indicator LEDs
DS5: ON/ SLEEP
DS2: DIO12
DS3: DIO11
DS4: DIO4

Programming Header
Header used to program XBee Programmable modules

Self Power Module
Advanced users only – will void warranty. R31 must be depopulated to power module using V+ and GND from J2 and J5. Sense lines can be connected to S+ and S- for sensing power supplies. **CAUTION:** Voltage not regulated. Applying incorrect voltage can cause fire and serious injury. See Note 1.

SPI
Only used for SMT modules

SPI Power
Connect to power board from 3.3V

Current Testing
Depopulating R31 allows a current probe to be inserted across P6 terminals. The current though P6/R31 powers the module only. Other supporting circuitry is powered by a different trace.

Reset button

Loopback Jumper
Populating P8 with a loopback jumper causes transmissions both from the module and from the USB to loopback.

User Buttons
Connected to DIO lines for user implementation

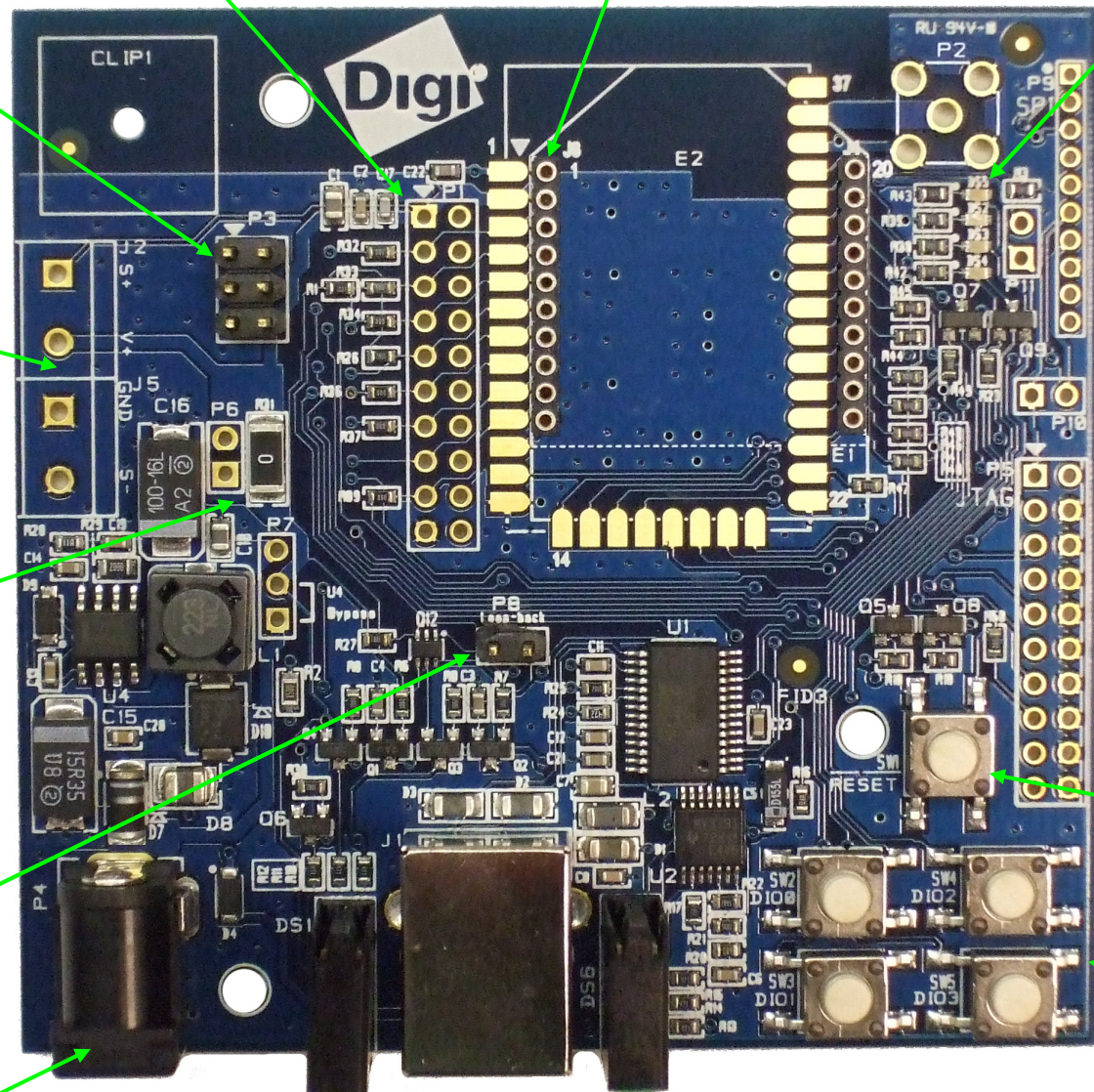
DC barrel plug: 6-20V
Module can be powered by the USB or DC supply. When plugged in simultaneously the DC supply powers the board.

LED Indicator
Yellow: UART Tx, RF Rx
Green: UART Rx, RF Tx
Red: Associate

USB

RSSI Indicator

NOTE 1: Powering board with J2 and J5 without R31 removed can cause shorts if USB or barrel plug power is connected. Applying too high of a voltage will destroy electronic circuitry in the module and other board components and/or cause injury.



Mouser Electronics

Authorized Distributor

Click to View Pricing, Inventory, Delivery & Lifecycle Information:

[Digi International:](#)

[XBIB-U-DEV](#)