



4G LTE CAT 1 CELLULAR  
SMART MODEM



# DIGI XBEE 3 CELLULAR LTE CAT 1

Digi XBee 3 smart modems offer the easiest way to integrate cellular connectivity into an OEM device or IoT gateway

Digi XBee® 3 modules accelerate time to market for designers, OEMs and solution providers by quickly enabling wireless connectivity and easy-to-add functionality. Building on industry-leading technology, pre-certified Digi XBee 3 modules offer the flexibility to switch between multiple frequencies and wireless protocols as needed.

Ideal for moderate bandwidth (typically < 25 MB per month) and low-cost IoT applications, Digi XBee 3 Cellular LTE Cat 1 modules are cost-competitive with modules based on older standards.

With Digi Remote Manager®, Digi XBee 3 modules can be easily configured and controlled from a central platform. Built-in Digi TrustFence® security, identity and data privacy features use multiple layers of control to protect against new and evolving cyber threats. Standard Digi XBee API frames and AT commands, MicroPython and Digi XCTU® simplify setup, configuration, testing and adding or changing functionality.

Digi XBee 3 modules are the latest addition to the Digi XBee Ecosystem of wireless modules, adapters and software – all engineered to accelerate development and deployment.

## BENEFITS

- Integrated MicroPython programmability enables custom scripting directly on the modem
- Transparent and API modes simplify software design
- MQTT support for Microsoft Azure and Amazon AWS
- FCC certified and carrier end-device certified for Verizon, AT&T, Telus and Bell
- Smallest end-device certified cellular modem
- Direct USB provides easy PPP integration option
- OTA firmware updates
- Enhanced with Digi TrustFence® security framework
- Manage/configure with Digi XCTU and Digi Remote Manager®
- Dual-mode radio for local configuration over Bluetooth® Low Energy using the Digi XBee Mobile app

## RELATED PRODUCTS



Digi XBee 3  
Cellular LTE Cat 1  
Development kit



Digi  
ConnectCore  
6UL SBC Pro



XCTU

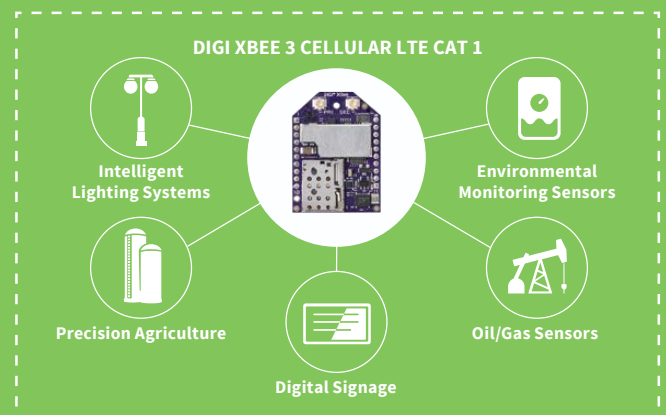
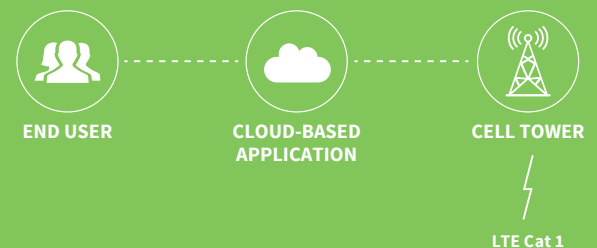


Digi Remote  
Manager®



Digi Wireless  
Design Services

## APPLICATION EXAMPLE



## SPECIFICATIONS

## Digi XBee 3 Cellular LTE Cat 1 Smart Modem

## HARDWARE

CELLULAR CHIPSET	Telit LE866A1-NA (AT&T), LE866-SV1 (Verizon)
FORM FACTOR	Digi XBee® 20-pin through-hole
ANTENNA OPTIONS	1 U.FL: Cellular Primary, 1 U.FL: Cellular Diversity Embedded Bluetooth® antenna
DIMENSIONS	24.38 mm x 32.94 mm (0.96 in x 1.3 in)
OPERATING TEMPERATURE	-40° C to 80° C (-40° F to 176° F)
SIM SIZE	4FF Nano

## INTERFACE AND I/O

DATA INTERFACE	UART, SPI, USB
OPERATING MODES	Transparent and API over serial, PPP over USB
SECURITY	Digi TrustFence® security with secure boot and protected JTAG
CONFIGURATION TOOLS	Digi XCTU® (local), Digi Remote Manager® (OTA)
EMBEDDED PROGRAMMABILITY	MicroPython with 512 kB flash / 64 kB RAM
I/O	4 ADC lines (10-bit), 13 Digital I/O, I2C
BLUETOOTH	BLE

## CELLULAR CHARACTERISTICS

TRANSMIT POWER	Up to 23 dBm
RECEIVE SENSITIVITY	-102 dBm
SUPPORTED BANDS	Bands 2, 4, 12 Bands 4, 13 (Verizon module)
DOWNLINK/UPLINK SPEEDS	10 mbps Downlink, 5 mbps Uplink (USB) 921 kbps Downlink and Uplink (UART)
DUPLEX MODE	Full-duplex

## POWER REQUIREMENTS (AT 3.3 VDC INPUT POWER)

SUPPLY VOLTAGE	3.0 to 5.5 V
PEAK TRANSMIT CURRENT	1000 mA Bluetooth disabled 1060 mA Bluetooth enabled
AVG TRANSMIT CURRENT	850 mA
AVG RECEIVE CURRENT	320 mA

## REGULATORY AND CARRIER APPROVALS

FCC (USA)	MCQ-XB3C1 and R17XE866A1NA, MCQ-XB3C1 and R17LE866SV1A (for Verizon module)
IC (CANADA)	1846A-XB3C1 and 5131A-XE866A1-NA, 1846A-XB3C1 and 5131A-LE866-SV1A (for Verizon module)
AT&T END-DEVICE CERTIFIED	Complete (XB3-C-A1-UT-001 only)
VERIZON END-DEVICE CERTIFIED	Complete (XB3-C-V1-UT-001 only)
TELUS END-DEVICE CERTIFIED	Complete (XB3-C-A1-UT-001 only)
BELL END-DEVICE CERTIFIED	Complete (XB3-C-A1-UT-001 only)
PTCRB	Complete (XB3-C-A1-UT-001 only)

## WARRANTY

PRODUCT WARRANTY	1-year
------------------	--------

PART NUMBERS	DESCRIPTION
XB3-C-A1-UT-001	Digi XBee 3 Cellular Smart Modem, LTE Cat 1, AT&T
XK3-C-A1-UT-U	Digi XBee 3 Cellular Smart Modem, LTE Cat 1, Development Kit, AT&T
XB3-C-V1-UT-001	Digi XBee 3 Cellular Smart Modem, LTE Cat 1, Verizon
XK3-C-V1-T-UB	Digi XBee 3 Cellular Smart Modem, LTE Cat 1, Development Kit, Verizon

FOR MORE INFORMATION  
PLEASE VISIT **DIGI.COM**

**DIGI SERVICE AND SUPPORT** / You can purchase with confidence knowing that Digi is always available to serve you with expert technical support and our industry leading warranty. For detailed information visit [www.digi.com/support](http://www.digi.com/support).

© 1996-2020 Digi International Inc. All rights reserved.  
All trademarks are the property of their respective owners.

91004232  
A13/720

**DIGI INTERNATIONAL WORLDWIDE HQ**  
877-912-3444 / 952-912-3444 / [www.digi.com](http://www.digi.com)

**DIGI INTERNATIONAL JAPAN**  
+81-3-5428-0261 / [www.digi-intl.co.jp](http://www.digi-intl.co.jp)

**DIGI INTERNATIONAL GERMANY**  
+49-89-540-428-0

**DIGI INTERNATIONAL SINGAPORE**  
+65-6213-5380

**DIGI INTERNATIONAL CHINA**  
+86-21-50492199 / [www.digi.com.cn](http://www.digi.com.cn)



# Mouser Electronics

Authorized Distributor

Click to View Pricing, Inventory, Delivery & Lifecycle Information:

DIGI:

[XB3-C-A1-UT-001](#) [XB3-C-V1-UT-001](#)