



CENTRALLY
MANAGED CONSOLE
ACCESS SERVER



DIGI CONNECT IT 16/48

Centrally manage routers, firewalls, servers and other critical IT infrastructure over LTE or enterprise WAN

Reduce downtime, and simplify cabling, deployment, maintenance and change management. The highly redundant design of Connect® IT 16/48 with dual Ethernet, dual SFP+ and dual power (field replaceable) provides a robust and resilient solution for demanding IT infrastructure management applications. Flexible power supply kits offer the ability to deploy the product into hot or cold aisles. Software selectable reversing serial cable pinout allows straight-through connectivity to most IT infrastructure devices.

Digi Remote Manager® (DRM) provides a single pane of glass interface to all devices across the enterprise and around the world, enabling management of complex, hyperscale and edge compute equipment.

Digi CORE™ LTE modems offer dual SIM support across the family of Digi enterprise routers and now Connect IT 16/48 products. These products are managed globally using DRM and enable network backup for mission critical data delivery for remote locations.

Finance, healthcare, global commerce and managed service companies can use the Connect IT 16/48 to help deliver the highest levels of reliability in support of their critical businesses.

FEATURES AND BENEFITS

- Digi CORE LTE modems support Cat-M, Cat 1, Cat 4 and Cat 6 in multiple regions
- Power supply kit provides dual replaceable redundant internal power
- Digi Connect IT 16
 - (16) RJ-45 RS-232 (standard/reversed mode selectable)
- Digi Connect IT 48
 - (48) RJ-45 RS-232 (standard/reversed mode selectable)
- Digi Foundations™ 1-, 3- or 5-year subscription available

RELATED PRODUCTS



Digi Connect® IT 4



Digi EX15

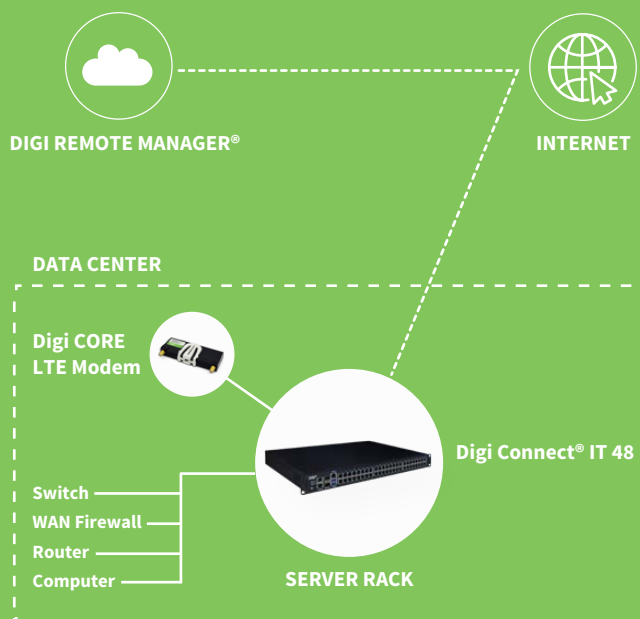


Digi CORE
LTE modem



Digi Remote
Manager

APPLICATION EXAMPLE

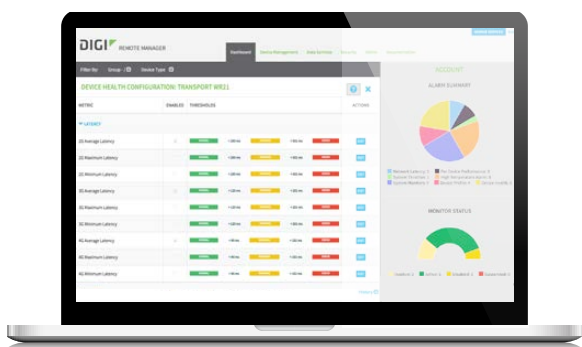


SPECIFICATIONS		DIGI CONNECT® IT 16		DIGI CONNECT® IT 48	
CELLULAR					
CORE MODULE SUPPORT		(1) Digi CORE™ module compliant socket (see accessories list for recommended modules)			
SOFTWARE AND MANAGEMENT					
REMOTE MANAGEMENT		Digi Remote Manager® (cloud based); SNMP			
LOCAL MANAGEMENT		WebUI (HTTPS); CLI (SSH, serial console, direct SSH to serial ports)			
MANAGEMENT/ TROUBLESHOOTING TOOLS		FTP, SFTP, SCP; protocol analyzer with PCAP for Wireshark; event logging with Syslog and SNMP; NTP/SNTP			
MEMORY		2 GB RAM, 8 GB flash			
SECURITY		Implements Digi TrustFence® and supports Digi Remote Manager (DRM)			
CONNECTIONS					
SFP+		(2) 10 Gb capable SFP+ sockets			
ETHERNET		(2) 10/100/1000 Ethernet			
SERIAL		(16) RS-232 serial RJ-45 (support standard or reversed mode)		(48) RS-232 serial RJ-45 (support standard or reversed mode)	
CONSOLE		(1) RS-232 serial RJ-45 console port		(1) RS-232 serial RJ-45 console port	
USB		(2) USB 3.1 Gen 1 (Type A)			
SD		(1) SD/SDHC/SDXC socket			
PHYSICAL					
DIMENSIONS (L x W x H)		444 mm x 300 mm x 44 mm (17.48 in x 11.81 in x 1.73 in)			
WEIGHT		5.10 kg (11.25 lbs) with power supply kit installed		5.28 kg (11.65 lbs) with power supply kit installed	
STATUS LEDS		Front: device power, status; (2) Ethernet (link/active) console (Tx/Rx); 16/48 (Tx/Rx); Back: (2) PSU, status, WWAN signal/service			
POWER REQUIREMENTS					
POWER INPUT		Redundant 100-240 V ~ 50-60 Hz 2.4 A max for each power supply			
POWER CONSUMPTION		30.5 W		39 W	
POWER SUPPLY KITS		Port side intake or port side exhaust redundant replaceable power supplies (device requires one power supply kit, see accessories)			
ENVIRONMENTAL					
OPERATING TEMPERATURE		0° C to 50° C (32° F to 122° F)			
STORAGE TEMPERATURE		0° C to 70° C (32° F to 158° F)			
RELATIVE HUMIDITY		5% to 95% (non-condensing)			
APPROVALS					
SAFETY		UL 60950, CSA 22.2 No. 60950, EN60950, EN62368			
EMISSIONS/IMMUNITY		CE, FCC Part 15 Class A, IC, AS/NZS CISPR 22, EN55024, EN55032			
WARRANTY					
PRODUCT WARRANTY*		5-year + Digi Foundations™			

*Digi Foundations can extend the standard five-year warranty to a Limited Lifetime Warranty that provides replacement with a new or similar Digi product for a period of five years from the date of purchase. After five years from the purchase date, the warranty value will revert to a 40 percent credit towards the MSRP of an equivalent product from Digi.

ENTERPRISE SOFTWARE	DESCRIPTION
PROTOCOL SUPPORT	HTTP, HTTPS, FTP, SFTP, SSL, SNMP v3, SSH and CLI for web management; Remote management via Digi Remote Manager; SMS management, protocol analyzer, ability to capture PCAP for use with Wireshark; DynDNS; Dynamic DNS client compatible with BIND9/No-IP/DynDNS
SECURITY/VPN	IP filtering, stateful inspection firewall with scripting, address and port translation; VPN: IPsec with IKEv1, IKEv2, NAT Traversal; SSL, SSLv2, SSLv3, OpenVPN client and server; Cryptology: SHA-1, MD5, SHA2-256, SHA2-384, SHA2-512, RSA; Encryption: DES, 3DES and AES up to 256-bit (CBC mode for IPsec); Authentication: RADIUS, TACACS+, TOTP, HOTP; X-509 certificates; MAC address filtering; VLAN support
ROUTING/FAILOVER	IP pass-through; NAT, NAPT with IP port forwarding; Ethernet bridging; GRE; Multicast routing; Network protocols: DHCP, PPPoE, Ethernet, cellular; Routing protocols: RIP (v1, v2), OSPF, BGP, Babel, IS-IS; RSTP (Rapid Spanning Tree Protocol); IP failover: VRRP, Ping, DNS, custom; Automatic failover/failback to second GSM network/standby APN
OTHER PROTOCOLS	DHCP; Dynamic DNS client compatible with BIND9/No-IP/DynDNS; QoS via TOS/DSCP/WRED

DIGI REMOTE MANAGER®



CAPABILITIES

- Centralized management of remote devices over 3G/4G/LTE
- Define standard configurations and automatically monitor individual devices for PCI security compliance
- Report and alert on performance statistics, including connection history, signal quality, latency, data usage and packet loss
- No servers or applications to operate and maintain
- Complete tasks for your entire device network in minutes
- Edit configurations and update firmware for your individual devices or groups
- Monitor the status and location of your remote device via a web browser
- Active or deactivate cellular lines and monitor data to ensure you never incur overage charges

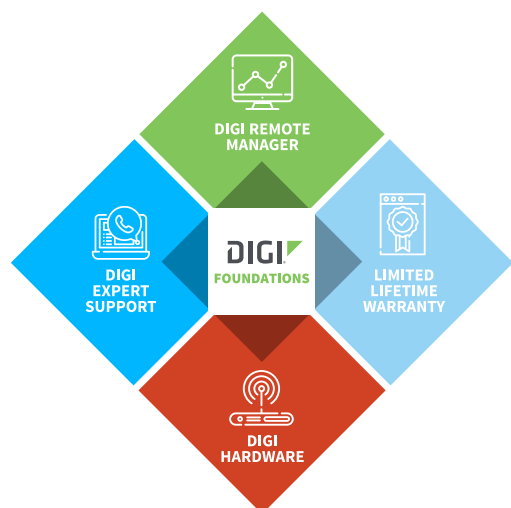
INFRASTRUCTURE

- Hosted in a commercial-grade SAS 70-certified environment
- Superior availability, operating to 99.9% or greater
- Open APIs available to support application development

SECURITY

- Certified SSAE-16 facilities
- Over 175 security controls in place to protect your data
- Enables compliance with security frameworks like PCI, HIPAA, NIST and more
- Earned SkyHigh's Cloud Trust Program highest ranking of Enterprise-Ready

DIGI FOUNDATIONS™



IT'S TIME TO CONNECT WITH CONFIDENCE

The convenient, comprehensive and secure way to integrate IoT communications hardware, device management software, global support and lifetime warranty protection into a connectivity solution to simplify your IoT network growth.

- [Digi Remote Manager®](#) (DRM) gives you a single point of contact, command and control with sophisticated remote device monitoring and management tools.
- [Digi Expert Support](#) is available around the clock, seven days a week, around the world with experts ready to provide technical support by phone, email or online.
- [Digi Limited Lifetime Warranty](#) lowers the total cost of ownership with hardware protection and equipment upgrades to expand your network as needs evolve.

Digi Foundations, with DRM, simplifies network and device management – for hundreds or hundreds-of-thousands of Digi or third-party devices – with options to upgrade as technology evolves. Isn't it time you got better connected?

For more information visit: digi.com/foundations

PRODUCT IMAGES

DIGI CONNECT IT 16 FRONT



DIGI CONNECT IT 48 FRONT



DIGI CONNECT IT 16 AND 48 BACK



PART NUMBERS	DIGI CONNECT IT 16 AND DIGI CONNECT IT 48
IT16-1002	Digi Connect IT 16, console access server with 16 serial ports
IT48-1002	Digi Connect IT 48, console access server with 48 serial ports
Power supply kits (mandatory accessory, each device requires one kit)	
ITPS-PSIK	Digi Connect IT 16/48 dual power supply kit, port side intake, use for deployment when serial ports will be serviced in a cold aisle or device will be deployed in an ambient environment
ITPS-PSEK	Digi Connect IT 16/48 dual power supply kit, port side exhaust, use when serial ports will be serviced from hot aisle

ACCESSORIES	FOR USE WITH ALL DIGI CONNECT IT, DIGI CM™ AND DIGI PASSPORT® MODELS
Serial cable adapters (for Digi Passport, Digi CM, Digi Connect IT)	
76000670	Digi DB-25 male modem adapter (8-pack)
76000671	Digi DB-9 female console adapter (8-pack)
76000672	Digi DB-25 male console adapter (8-pack)
76000673	Digi DB-25 female console adapter (8-pack)
76000702	Digi DB-9 male modem adapter (8-pack)

PART NUMBERS	DIGI CORE LTE MODEMS
For use with all Digi Connect IT 16 and Digi Connect IT 48 models purchased without a module (RM00 versions)	
ASB-1002-CM03-GLB	Digi CORE 1002-CM LTE modem; Cat 3; LTE / HSPA+ / EV-DO; Cellular certifications: Verizon, AT&T, Sprint, T-Mobile, PTCRB
ASB-1002-CM04-OUS	Digi CORE 1002-CM LTE modem; Cat 4; LTE / HSPA+; Cellular certifications: Verizon, AT&T, T-Mobile, PTCRB
ASB-1002-CM06-GLB	Digi CORE 1002-CM LTE modem; Cat 6; LTE-A / HSPA+; Cellular certifications: Verizon, AT&T, Sprint, T-Mobile, PTCRB
ASB-1002-CM16-GLB	Digi CORE 1002-CM LTE modem; Cat 6; LTE-A / HSPA+; Cellular certifications: Australia / New Zealand

DIGI FOUNDATIONS™	AVAILABLE FOR DIGI CONNECT IT 16 AND DIGI CONNECT IT 48 MODELS
DGF-BDL-STAN-1YR	Digi Foundations add-on, 1 year, includes Expert Support, Digi Remote Manager, and Limited Lifetime Warranty
DGF-BDL-STAN-3YR	Digi Foundations add-on, 3 years, includes Expert Support, Digi Remote Manager, and Limited Lifetime Warranty
DGF-BDL-STAN-5YR	Digi Foundations add-on, 5 years, includes Expert Support, Digi Remote Manager, and Limited Lifetime Warranty

DIGI SERVICE AND SUPPORT / You can purchase with confidence knowing that Digi is always available to serve you with expert technical support and our industry leading warranty. For detailed information visit www.digi.com/support.

© 1996-2019 Digi International Inc. All rights reserved.
All trademarks are the property of their respective owners.

91004397
B41019

DIGI INTERNATIONAL WORLDWIDE HQ
877-912-3444 / 952-912-3444 / www.digi.com

DIGI INTERNATIONAL GERMANY
+49-89-540-428-0

DIGI INTERNATIONAL JAPAN
+81-3-5428-0261 / www.digi-intl.co.jp

DIGI INTERNATIONAL SINGAPORE
+65-6213-5380

DIGI INTERNATIONAL CHINA
+86-21-50492199 / www.digi.com.cn



Mouser Electronics

Authorized Distributor

Click to View Pricing, Inventory, Delivery & Lifecycle Information:

DIGI:

[IT48-1002](#) [IT16-1002](#) [ITPS-PSIK](#) [ITPS-PSEK](#)