



RUGGED, SECURE  
LTE INDUSTRIAL  
ROUTER



Manage this device with  
Digi Remote Manager

# DIGI IX10

Rugged, reliable, cost-effective connectivity for critical industrial applications

Digi IX10 is a full-featured cellular router built for trouble-free reliability over a long service life. Its flexible power and connectivity options make it a versatile and cost-effective choice for light industrial, digital signage, ATMs, lottery terminals, kiosks and other unattended retail applications that need to provide secure transactions.

Digi IX10 features a RJ-45 serial port supporting both RS-232 and RS-485, as well as built-in dual SIMs for redundant connection. It is capable of operating independently on public LTE networks, with features to assist in network control and management, such as VLAN support, load balancing between cellular and Ethernet WANs, dual APNs and configurable APN search.

Gain critical insights into your deployed devices and manage your network with Digi Remote Manager® — the command center for your deployment. Digi Remote Manager (Digi RM) is a cloud-based solution that facilitates easy setup, mass configuration, maintenance and support for hundreds or even thousands of remote Digi devices. Digi RM empowers you to evaluate, update and configure your Digi enterprise products, while providing easy visibility into the health of your network.

Digi IX10 enables low- or zero-touch provisioning. In addition, Digi IX10 offers the convenience of a global SKU, which simplifies inventory control for global distribution and deployment.

## FEATURES AND BENEFITS

- Compact and economical cellular routing platform with industrial feature set
- Redundant connectivity with dual SIMs and Digi SureLink®
- Global bands and single part number to simplify global distribution, deployment and management
- Built-in Digi TrustFence® for device security, device identity and data privacy
- Digi Remote Manager platform for easy setup, mass configuration and management
- Ethernet port and single RJ-45 serial port (RS-232/485)

## RELATED PRODUCTS



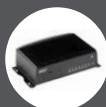
Digi IX14



Digi IX20



Digi WR31

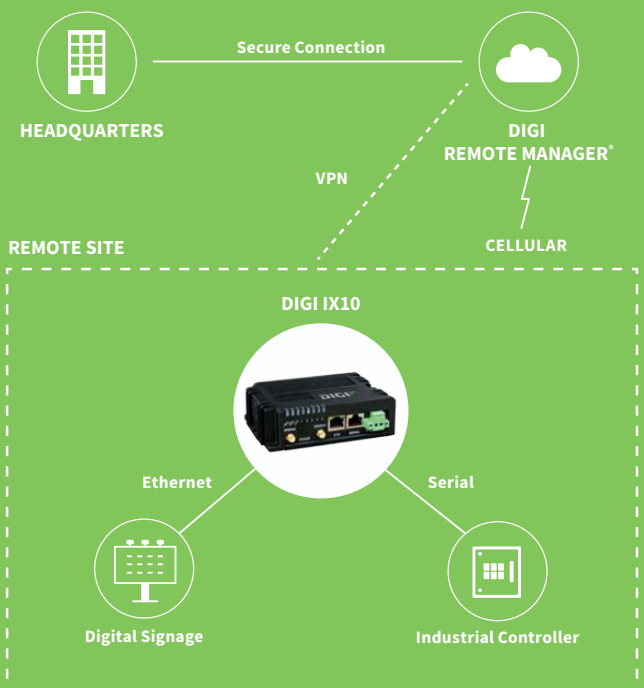


Digi TX54



Digi Remote Manager

## APPLICATION EXAMPLE



## SPECIFICATIONS

## DIGI® IX10

## CELLULAR

## CERTIFICATIONS

Visit [www.digi.com/resources/certifications](http://www.digi.com/resources/certifications) for latest certifications

## LTE (G4)

LTE Cat 4: B1, B2, B3, B4, B5, B7, B8, B12, B13, B18, B19, B20, B25, B26, B28, B38, B39, B40, B41  
 3G: B1, B2, B4, B5, B6, B8, B19  
 2G EDGE / GPRS: 850 / 900 / 1800 / 1900 MHz

## CONNECTORS

(2) 50 Ω SMA (center pin: female)

## SIM SLOTS

(2) Mini-SIM (2FF)

## SIM SECURITY

Behind SIM cover, secured with screw (#1 Phillips)

## SOFTWARE AND MANAGEMENT

## REMOTE MANAGEMENT

Digi Remote Manager®; SNMP v2/v3 (user installed/managed)

## LOCAL MANAGEMENT

WebUI (HTTP/HTTPS); CLI (Telnet, SSH)

MANAGEMENT/  
TROUBLESHOOTING TOOLS

FTP client, SCP; protocol analyzer with PCAP for Wireshark; event logging with syslog and SMTP client; NTP/SNTP; Nagios, Intelliflow, iPerf, Dynamic DNS, ping, traceroute

## ETHERNET

## PORTS

(1) RJ-45; 10/100 Mbps (auto-sensing)

## SERIAL

## PORTS

(1) RJ-45 10-pin (10P10C); RS-232/485; software selectable  
 - RS-232 DTE (RXD, TXD, RTS, CTS, DTR, DCD, DSR, RI)  
 - RS-485 (TX/RX+; RX/TX-); half-duplex

## PHYSICAL

## DIMENSIONS (L x W x H)

118 mm x 88 mm x 35 mm (4.65 in x 3.46 in x 1.38 in)

## WEIGHT

0.39 kg (0.86 lb)

## STATUS LEDs

Power, Internet, SIM 1, SIM 2, SIM fail, LTE, signal strength (5)

## ENCLOSURE

Glass-filled polyphenylene sulphide (PPS) / IP30

## POWER REQUIREMENTS

## POWER INPUT

9 - 30 VDC, 1.0 A maximum

## POWER CONSUMPTION

2.5 W typical (idle); 6 W typical (peak Tx/Rx)

## ENVIRONMENTAL

## OPERATING TEMPERATURE

-40° C to 70° C (-40° F to 158° F); device performance may be impacted above 50° C (122° F)

## RELATIVE HUMIDITY

5% to 95% (non-condensing)

## APPROVALS

## CELLULAR

Visit [www.digi.com/resources/certifications](http://www.digi.com/resources/certifications) for latest cellular certifications

## SAFETY

IEC62368-1, CB, EN62311

## ENVIRONMENTAL

ROHS3

## EMISSIONS / IMMUNITY

CE; RED; FCC Part 15, Subpart B; ICES-003; AU/NZS CISPR32

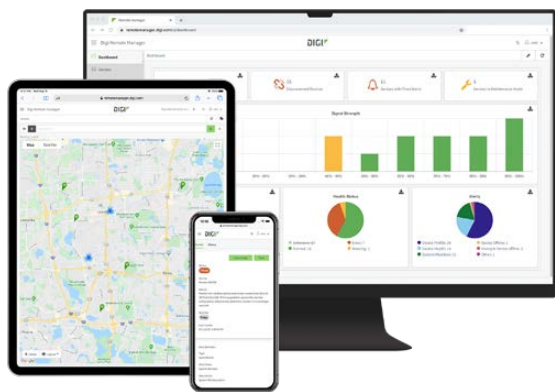
## WARRANTY

## PRODUCT WARRANTY

3-year

ENTERPRISE SOFTWARE	DESCRIPTION
CELLULAR CONNECTIVITY	
PROTOCOL SUPPORT	HTTPS, FTP client, SSL, TLS v1.2, SCP (client and server), SFTP, SMTP client for use by scripts and the command line, SNMP (v2/v3), SSH; remote management via Digi Remote Manager®; protocol analyzer, ability to capture PCAP for use with Wireshark; DynDNS; dynamic DNS client compatible with BIND9/No-IP/DynDNS; captive portal, Intelliflow; Nagios, DNS server, NTP server, multicast, mDNS, IPerf
SECURITY	IP filtering, stateful firewall, custom firewall rules (iptables), address and port translation; TLS 1.2 and above, OpenVPN client and server; VPN tunnels; Authentication: RADIUS, TACACS+; certificates; MAC address filtering; VLAN support
VPN	IPSec with IKEv1, IKEv2, NAT Traversal; OpenVPN client and server; GRE VPN tunnels; Cryptology: SHA-1/256/384/512, MD5, RSA; Encryption: 3DES and AES up to 256-bit (CBC mode for IPsec); Diffie Hellman: DH groups 1-32 (CURVE448)
ROUTING / FAILOVER	IP pass-through; NAT, NAPT with IP port forwarding; GRE; multicast routing; Routing protocols: RIP (v1, v2) OSPF, BGP; IP failover: VRRP; automatic failover, Digi SureLink®
OTHER PROTOCOLS	DHCP; dynamic DNS client compatible with No-IP/DynDNS

## DIGI REMOTE MANAGER®



Digi Remote Manager is the technology platform that brings networks to the next level, allowing networks — and the people who manage them — to work smarter. With Digi Remote Manager you can transform a multitude of dispersed IoT devices into a dynamic, intelligent network. Now you can easily deploy, monitor and diagnose thousands of mission-critical devices from a single point of command — on your desktop, tablet or phone. All the while, its software-defined security diligently safeguards your entire Digi ecosystem.

Learn more at [www.digi.com/digi-remote-manager](http://www.digi.com/digi-remote-manager)

### CAPABILITIES

- Activate, monitor and diagnose your mission-critical devices from a single point of command and control — on your desktop or mobile app
- Schedule key operations — including firmware updates and file management — on a single device or on a group of devices, keeping your network functionality up-to-date and maintaining compliance standards
- Manage edge devices out-of-band via console terminal access
- Keep tabs on device health and connectivity across device deployments of any size
- Create detailed reports and enable real-time alerts for specified conditions
- Integrate device data through open APIs to gain deeper insights and control with third-party applications
- Report and alert on performance statistics, including connection history, signal quality, latency, data usage and packet loss

### INFRASTRUCTURE

- Hosted in a commercial-grade cloud server environment that meets SOC 1®, SOC 2® and SOC 3® standards
- Superior availability, operating to 99.9% or greater
- Open APIs available to support application development

### SECURITY

- More than 175 security controls in place to protect your data
- Member of the Center for Internet Security® (CIS®)
- Enables compliance with security frameworks like ISO27002, HIPAA, NIST and more
- Earned Skyhigh's CloudTrust™ Program highest rating of Enterprise-Ready

## PRODUCT IMAGES

FRONT



BACK



### PART NUMBERS

### DIGI® IX10

IX10-00G4

Digi IX10 - LTE Cat 4 Global, (1) Ethernet, RS-232/485

### PART NUMBERS

### ACCESSORIES

76002104

Power supply with plug tips for US, UK, EU, AU

76002103

(1) Cellular antenna (order quantity 2)

76002095

DIN rail clip kit

76000723

Connect EIA 422/485 devices to Digi products that have 10-pin RJ-45 connectors\*

\*For RS-232 cabling pinouts and recommended cables, please refer to the Digi products cabling guide at: [www.digi.com/resources/documentation/Digidocs/PDFs/90000253.pdf](http://www.digi.com/resources/documentation/Digidocs/PDFs/90000253.pdf)

FOR MORE INFORMATION  
PLEASE VISIT **DIGI.COM**

The information provided in this document is preliminary and may be subject to change without notice.

**DIGI SERVICE AND SUPPORT** / You can purchase with confidence knowing that Digi is always available to serve you with expert technical support and our industry leading warranty. For detailed information visit [www.digi.com/support](http://www.digi.com/support).

© 1996-2020 Digi International Inc. All rights reserved.  
All trademarks are the property of their respective owners.

**DIGI INTERNATIONAL WORLDWIDE HQ**  
877-912-3444 / 952-912-3444 / [www.digi.com](http://www.digi.com)

**DIGI INTERNATIONAL JAPAN**  
+81-3-5428-0261 / [www.digi-intl.co.jp](http://www.digi-intl.co.jp)

**DIGI INTERNATIONAL GERMANY**  
+49-89-540-428-0

**DIGI INTERNATIONAL SINGAPORE**  
+65-6213-5380

**DIGI INTERNATIONAL CHINA**  
+86-21-50492199 / [www.digi.com.cn](http://www.digi.com.cn)

91004436  
A3/920



# Mouser Electronics

Authorized Distributor

Click to View Pricing, Inventory, Delivery & Lifecycle Information:

[Digi International:](#)

[IX10-00G4](#)