



EFFICIENT PROGRAMMING
DEVICE FOR DIGI XBEE
MODULES



DIGI XBEE MULTI PROGRAMMER

Rapidly configure multiple Digi XBee modules prior to deployment

When you are ready to build your application, you need an efficient way to program your Digi XBee® modules. Now you can use the Digi XBee Multi Programmer to program up to six Digi XBee modules at once with device firmware, configuration parameters, and MicroPython code.

The Digi XBee Multi Programmer is a combination of a PC-based application and a sophisticated, but easy-to-use hardware interface. Using a pre-existing firmware profile created with Digi XCTU®, the Digi XBee Multi Programmer application software replicates the firmware profile to the Digi XBee modules plugged into the device. The simple, automated programming process is designed for operators who may

have limited product knowledge. For ease-of-use, the device LEDs near each socket indicate when a module is properly attached, when programming is in progress, and whether the programming session passed or failed. Operators can plug in more than one Digi XBee Multi Programmer device into the same computer to expedite programming.

The Digi XBee Multi Programmer has interchangeable header board variants for through-hole, surface-mount, and micro-mount Digi XBee form factors. The header boards can be purchased separately and swapped, as needed.

FEATURES AND BENEFITS

- Programs up to six Digi XBee modules simultaneously
- Multiple Digi XBee Multi Programmers can be connected to the PC to increase the number of modules programmed at one time
- All Digi XBee form factors are supported with interchangeable header boards
- Operators can export programming session logs or save them in a database
- Automatic application updates keep the software up-to-date with the latest software version
- Users can access comprehensive online documentation directly from the application

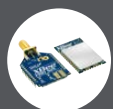
RELATED PRODUCTS



Digi XBee3®
Cellular LTE-M/
NB-IoT



Digi XBee3®
Zigbee 3

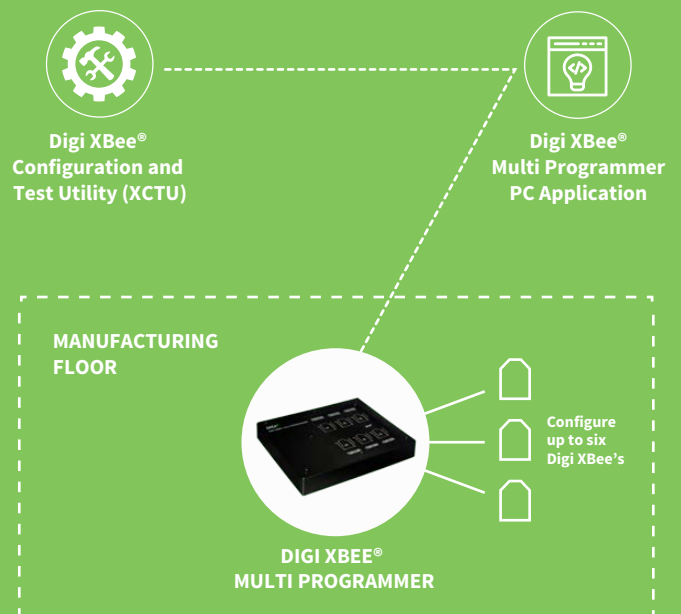


Digi XBee3®
DigiMesh



Accessories

APPLICATION EXAMPLE

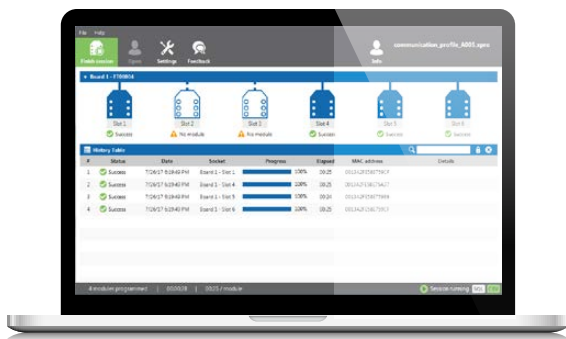


SPECIFICATIONS	DIGI XBEE® MULTI PROGRAMMER
DIGI XBEE PRODUCTS SUPPORTED	Digi XBee3 Zigbee, Digi XBee3 DigiMesh, Digi XBee3 802.15.4, Digi XBee3 Cellular LTE CAT 1, Digi XBee3 Cellular LTE-M/NB-IoT, Digi XBee Cellular LTE Cat 1, Digi XBee Cellular 3G, Digi XBee S2C, Digi XBee SX, Digi XBee SX 868, Digi XBee 900HP, Digi XBee XSC
CONNECTORS	USB Type C, barrel jack for power supply (included)
SOFTWARE AND MANAGEMENT	
CONFIGURATION	Uses profiles saved from XCTU
SOFTWARE	Digi XBee Multi Programmer application software
OPERATING SYSTEMS SUPPORTED	Windows
MINIMUM SYSTEM REQUIREMENTS	300 MB hard drive space, 2 GB RAM, dual-core processor CPU
SYSTEM REQUIREMENTS	500 MB hard drive space, 4 GB RAM, quad-core processor CPU
PHYSICAL	
DIMENSIONS (L X W X H)	20.32 cm x 17.51 cm x 3.81 cm (8 in x 6.895 in x 1.5 in)
WEIGHT	0.91 kg (2 lb)
XBEE SOCKETS	6 identical XBee sockets with dedicated serial interface, USB-to-cellular modem (for cellular variants only), for all available XBee form factors (SMT, TH or Micro)
POWER REQUIREMENTS	
POWER INPUT	9 - 12 VDC, 1.5 A minimum power source required
POWER SUPPLY (INCLUDED)	Input: 100-240 VAC Output: 12 VDC 3A
ENVIRONMENTAL	
OPERATING TEMPERATURE	0° C to 50° C (32° F to 122° F)
RELATIVE HUMIDITY	5% to 60% (non-condensing)
WARRANTY	
PRODUCT WARRANTY	1 year*

*Under normal usage and conditions.

THE DIGI XBEE MULTI PROGRAMMER APPLICATION SOFTWARE

Digi XBee Multi Programmer comes with easy-to-use application software for programming Digi XBee devices. Designed for minimal touch operation, the application software enables an operator to specify the profile settings to be uploaded to the Digi XBee devices plugged into the Digi XBee Multi Programmer.



CAPABILITIES

- Allows an operator to load pre-set firmware, configuration and MicroPython settings created in Digi XCTU
- Configures multiple devices at once with a single master configuration profile, MicroPython files and more
- Compatible with any Digi XBee form factor – surface mount, through-hole, or micro
- Expedites programming by enabling six Digi XBee devices to be programmed at one time
- Allows unattended programming; the operator can start the programming process and walk away
- Speeds time-to-market by reducing production time

PART NUMBERS	DESCRIPTION
XBEE-MP-MCRO	Digi XBee Multi Programmer, micro form factor (MMT)
XBEE-MP-SMT	Digi XBee Multi Programmer, surface mount (SMT)
XBEE-MP-TH	Digi XBee Multi Programmer, through-hole (TH)

PART NUMBERS	ACCESSORIES
XBEE-MP-MCRO-PCB	Digi XBee Multi Programmer, micro form factor (MMT) printed circuit board
XBEE-MP-SMT-PCB	Digi XBee Multi Programmer, surface mount (SMT) printed circuit board
XBEE-MP-TH-PCB	Digi XBee Multi Programmer, through-hole (TH) printed circuit board

FOR MORE INFORMATION
PLEASE VISIT WWW.DIGI.COM

DIGI SERVICE AND SUPPORT / You can purchase with confidence knowing that Digi is always available to serve you with expert technical support and our industry leading warranty. For detailed information visit www.digi.com/support.

© 1996-2019 Digi International Inc. All rights reserved.
All trademarks are the property of their respective owners.

91004399
A6/1219

DIGI INTERNATIONAL WORLDWIDE HQ
877-912-3444 / 952-912-3444 / www.digi.com

DIGI INTERNATIONAL GERMANY
+49-89-540-428-0

DIGI INTERNATIONAL JAPAN
+81-3-5428-0261 / www.digi-intl.co.jp

DIGI INTERNATIONAL SINGAPORE
+65-6213-5380

DIGI INTERNATIONAL CHINA
+86-21-50492199 / www.digi.com.cn



Mouser Electronics

Authorized Distributor

Click to View Pricing, Inventory, Delivery & Lifecycle Information:

[Digi International:](#)

[XBEE-MP-SMT](#)