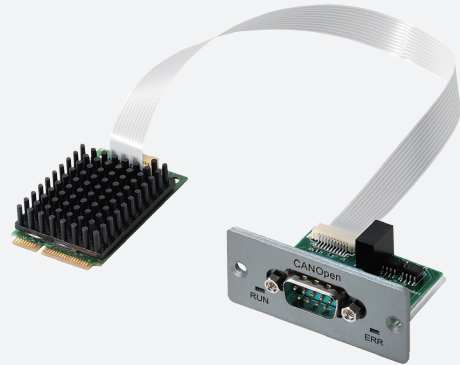


FBI90E-COM (P/N:10J50090E14X0)



FBI 90E-COM Universal Kit (P/N:10J50090E15X0)

Main Features

- ♦ Support CANOpen Master Interface
- ♦ Mini PCIe Form Factor
- ♦ Fully Compatible with CANOpen I/O Modules and Devices
- ♦ Driver Support for Windows, WinCE, RTX, QNX, VxWorks, Linux
- ♦ 1 x DB9
- ♦ User Friendly Configuration Utility

Product Overview

The FBI90E-COM is the Fieldbus module supports industrial CANOpen protocol for industrial uses. This card equips with the required CANOpen firmware to make this card as the master or slave interface for CANOpen protocol. The CANOpen is one of the major communication protocols for industrial automation. In factory automation application system, FBI90E-COM allows the users to create a steady CANOpen I/O communication between devices via PC-based computer.

Specifications

Form Factor

- ♦ mini-PCIe card with separated connector board

I/O Devices Max.

- ♦ 126

Cyclic Data Max.

- ♦ 7168 Bytes for Master
- ♦ 1024 Bytes for Slave

SDO Up- und Download

- ♦ max 200Bytes/Request for Master only

PDO Communication

- ♦ max. 512 Rx/TxPDO for master
- ♦ max. 64 Rx/TxPDO for slave

CAN

- ♦ 11 Bits for Master and Slave

Support Functions

- ♦ Node-/Life Guard
- ♦ Heartbeat
- ♦ PDO Mapping
- ♦ NMT Management
- ♦ SYNC, Emergency

Ordering Information

♦ FBI90E-COM (P/N:10J50090E14X0)

Mini-PCIe CANOpen master card
Cable Length: 25cm

♦ FBI 90E-COM Universal Kit (P/N:10J50090E15X0)

Mini-PCIe CANOpen master module kit w/universal bracket
Cable length:25cm

Mouser Electronics

Authorized Distributor

Click to View Pricing, Inventory, Delivery & Lifecycle Information:

[Nexcom:](#)

[10J50090E15X0](#)