

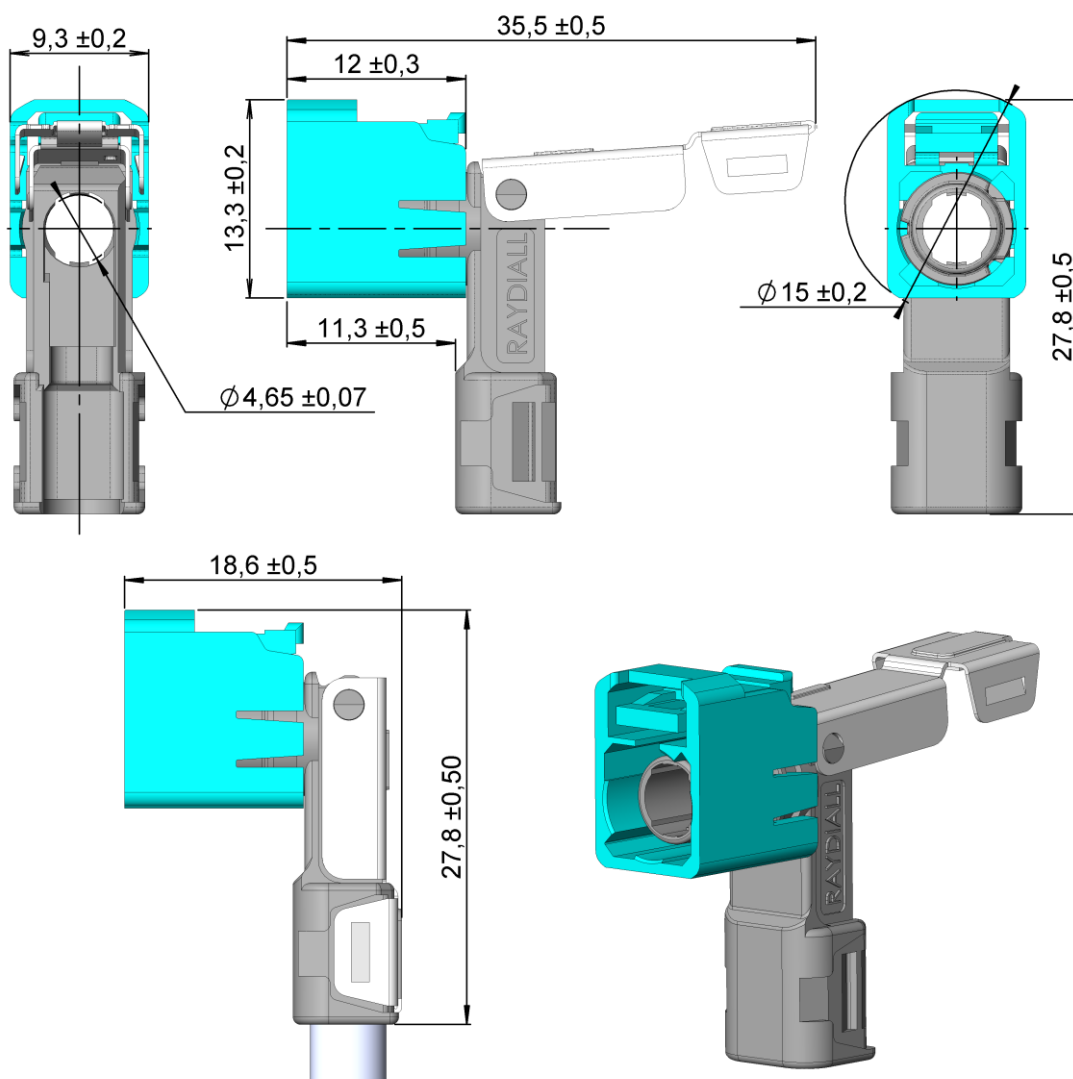
Fakra R3C – Right-Angle housing  
Cable type **RG58** (5/50) & **RG59** (5/75)



R197.125.\_81

TECHNICAL DATA SHEET

Rev	Date	Edited	Approved	Validated	Modification
1	14/12/2018	C.Chavanne	Y.Gay	R.Chantre	Creation



All dimensions are in mm

COMPONENTS	MATERIALS	UL CLASSIFICATION	COLOR
Housing	Polyamide	UL 94 V-2	See page 2
Cap	Inox		
Sleeve	Die Cast	Chromatation	Tint variation may happen depending on moulding shots

## Fakra R3C – Right-Angle housing

Cable type **RG58** (5/50) & **RG59** (5/75)



R197.125.\_81

### TECHNICAL DATA SHEET

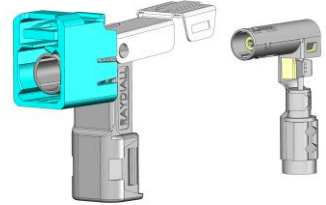
#### Interface

According to

ISO 20860-1

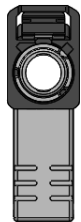
#### Application

This housing is part of an assembly to create a complete R-A R3C connector. It has to be assembled with a terminal.  
Refer to **Assembly Instructions AI\_R-AR3C** to get the corresponding P/N.

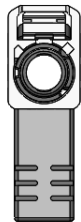


#### Codings

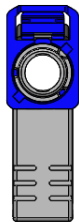
To obtain the complete part number, please fill in the blank “\_” with the coding letter.



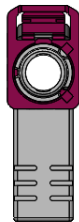
**A**  
Black  
RAL 9005



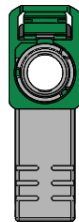
**B**  
Crème White  
RAL 9001



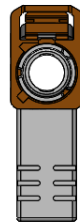
**C**  
Blue  
RAL 5005



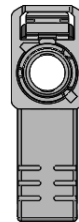
**D**  
Bordeaux  
RAL 4004



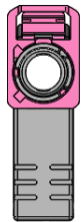
**E**  
Green  
RAL 6002



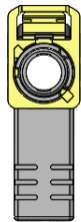
**F**  
Brown  
RAL 8011



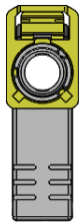
**G**  
Grey  
RAL 7031



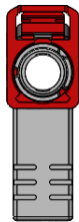
**H**  
Violet  
RAL 4003



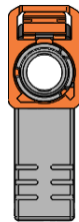
**I**  
Beige  
RAL 1001



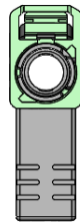
**K**  
Curry  
RAL 1027



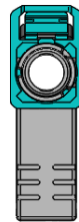
**L**  
Carmin  
RAL 3002



**M**  
Pastel Orange  
RAL 2003



**N**  
Pastel Green  
RAL 6019



**Z**  
Water blue  
RAL 5021

**Net Weight:** 4.93 g

#### Storage condition & Shelf Life

Boxes should be stored indoors, in its original packaging (box + plastic bag), in a controlled climate environment not exceeding -20°C/+40°C and maximum 70% relative humidity. The boxes should be protected from direct sunlight and should be used on a "first-in, first-out" basis.

It is recommended to use this reference within 1 year from the date of manufacture when stored according the recommended storage condition.

#### Product Handling

Care must be taken when handling the boxes of housings. They must not fall. Indeed it might unwillingly lock the cap, which makes the housing un-usable.

Fakra R3C – Right-Angle housing  
Cable type **RG58** (5/50) & **RG59** (5/75)



R197.125.\_81

TECHNICAL DATA SHEET

**Packaging:** 1 welded plastic bag inside cardboard box

Number of housings/ Plastic bag: 1500 pcs / box: 1500 Pcs



**Cardboard box**

Dimensions (WxDxH): 40 x 20 x 20 cm

Weight: ≈ 7,8 kg



**Plastic bag**

# Mouser Electronics

Authorized Distributor

Click to View Pricing, Inventory, Delivery & Lifecycle Information:

[Raydiall Automotive:](#)

[R197.125.A81](#) [R197.125.B81](#) [R197.125.C81](#) [R197.125.D81](#) [R197.125.Z81](#)