

6

5

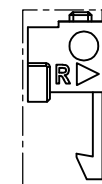
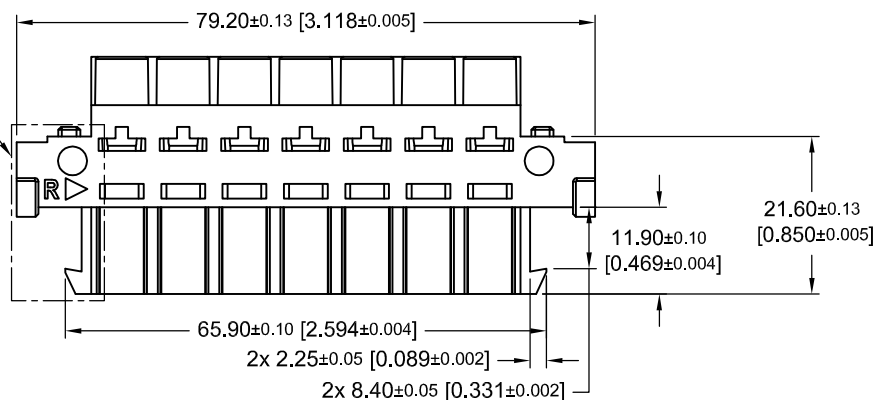
4

3

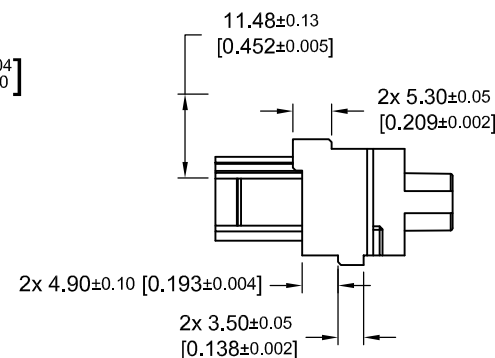
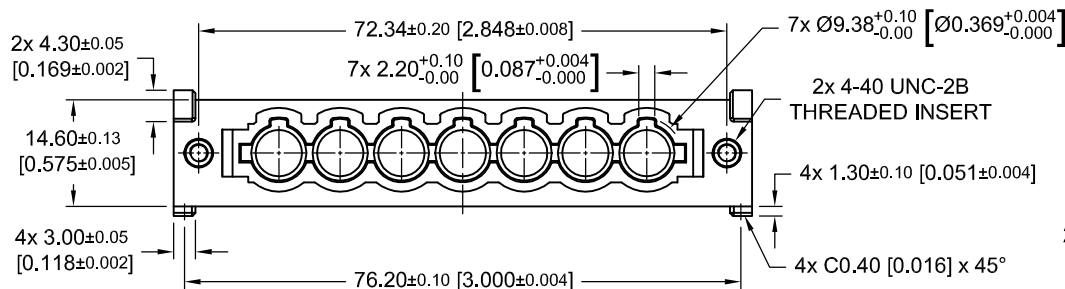
2

1

DETAIL A


SEE
DETAIL A

"R" INDICATE RIGHT SIDE CONNECTOR.
 "▶" INDICATE STARTING POINT OF
 CONTACT POSITION 1.
 FOR LEFT SIDE CONNECTOR, PLEASE
 REFER TO DETAIL B ON SHEET 3.



NOTES:

- 1) MATERIALS AND FINISHES:
 INSULATOR : GLASS-FILLED POLYESTER, UL 94V-0. COLOR: BLUE. (HALOGEN-FREE)
 CONTACTS: ORDER CONTACTS SEPARATELY.
 THREADED INSERT: COPPER ALLOY.
- 2) COMPLIANT TO THE CURRENT ROHS DIRECTIVE.
- 3) THIS DRAWING IS COMMONLY USED FOR RIGHT AND LEFT SIDE CONNECTOR.
- 4) THIS MOS ALLOWS FOR THE CONNECTOR TO BE SUPPLIED WITH SPECIAL CONTACTS
 MODULES WHICH ALLOWS FOR TOUCH SAFE FEATURE.
- 5) RECOMMENDED WIPE LENGTH FOR 1ST MATE IS 7MM AND STANDARD MATE IS 4MM.

BY JH	CHK JH	RELEASED INTO 25-02-2022	SCALE NTS	POSTTRONIC BELIEVES THE DATA ON THE DRAWING TO BE RELIABLE. THE USER EMPLOYS SUCH INFORMATION AT HIS OWN DISCRETION AND RISK. POSTTRONIC ASSUMES NO RESPONSIBILITY FOR RESULTS OBTAINED OR DAMAGES INCURRED FROM USE OF SUCH INFORMATION IN WHOLE OR IN PART.	 Positronic
APR EH					
TOLERANCES ± 0.03mm [0.001 INCHES] FOR MALE CONTACT MATING DIAMETERS ± 0.08mm [0.003 INCHES] FOR CONTACT TERMINATION DIAMETERS ± 0.13mm [0.005 INCHES] FOR ALL OTHER DIAMETERS ± 0.38mm [0.015 INCHES] FOR ALL OTHER DIMENSIONS ± 5° FOR ALL ANGLES DIMENSION ARE IN MILLIMETERS [INCHES]			PART NUMBER SP10RSSS1M2001/AA-2268	SERIES SP	
TITLE MALE CONNECTOR			CREATED ON 24-02-2022	SHEET SHEET 1 OF 3	REV D

6

5

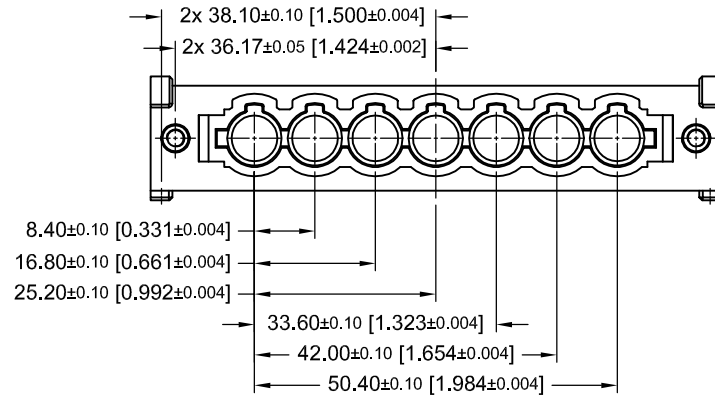
4

3

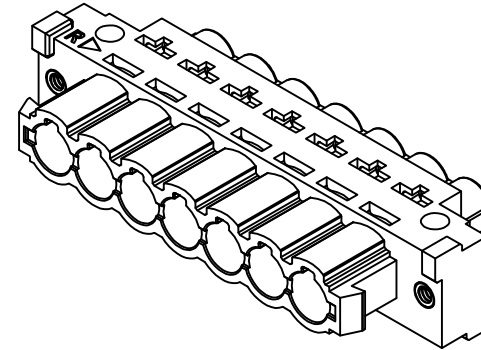
2

1

D

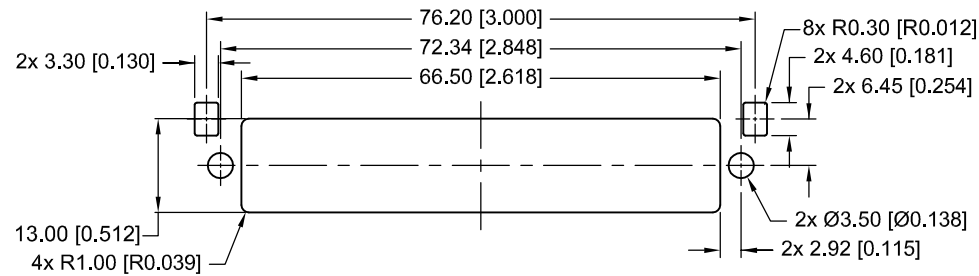


3D VIEW FOR RIGHT SIDE CONNECTOR



D

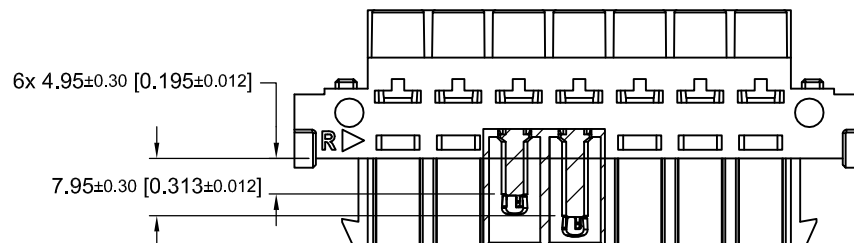
C

PANEL CUTOUT (FOR RIGHT SIDE CONNECTOR)
(GENERAL TOLERANCE: ±0.13 [±0.005])

B


B

REFERENCE VIEW FOR AFTER CRIMP CONTACTS ARE INSTALLED



A

A

3RD ANGLE 	PART NUMBER SP10RSSSIM2001/AA-2268	SERIES SP	
	DESCRIPTION MALE CONNECTOR		
SCALE NTS	CREATED ON 24-02-2022	SHEET SHEET 2 OF 3	REV D

6

5

4

3

2

1

6

5

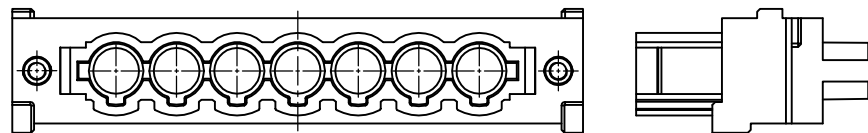
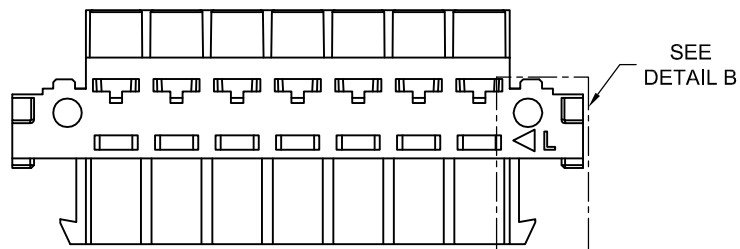
4

3

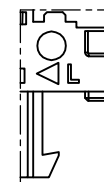
2

1

VIEW FOR LEFT SIDE CONNECTOR
(FOR DIMENSIONS, PLEASE REFER TO RIGHT SIDE CONNECTOR)

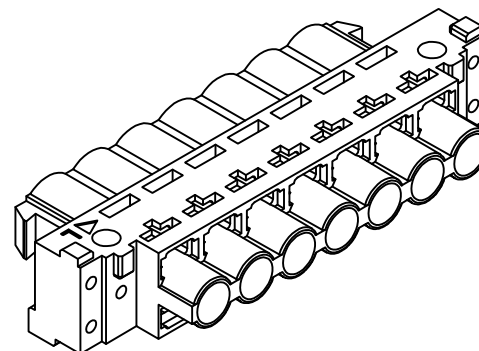
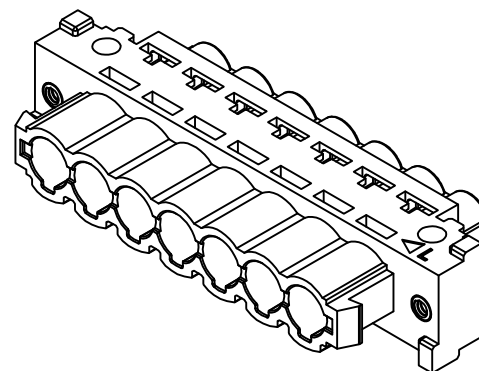


DETAIL B

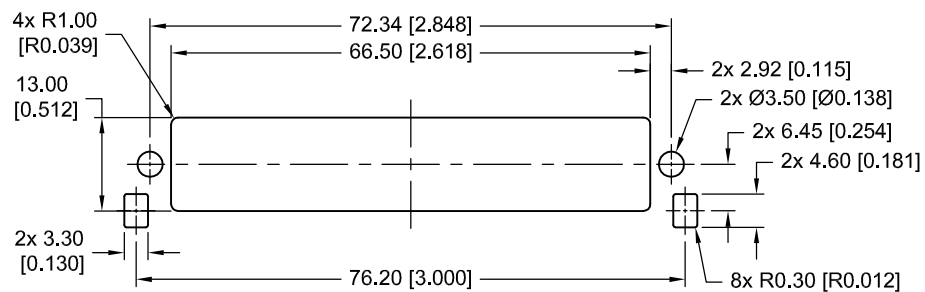


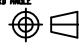
"L" INDICATE LEFT SIDE CONNECTOR.
"◁" INDICATE STARTING POINT OF
CONTACT POSITION 1.

3D VIEW FOR LEFT SIDE CONNECTOR



PANEL CUTOUT (FOR LEFT SIDE CONNECTOR)
(GENERAL TOLERANCE: ± 0.13 [± 0.005])



3RD ANGLE 	PART NUMBER SP10RSSS1M2001/AA-2268	SERIES SP
	DESCRIPTION MALE CONNECTOR	
SCALE NTS	CREATED ON 24-02-2022	SHEET SHEET 3 OF 3
		REV D

6

5

4

3

2

1

Mouser Electronics

Authorized Distributor

Click to View Pricing, Inventory, Delivery & Lifecycle Information:

Positronic:

[SP10RSSS1M2001/AA-2268](#)