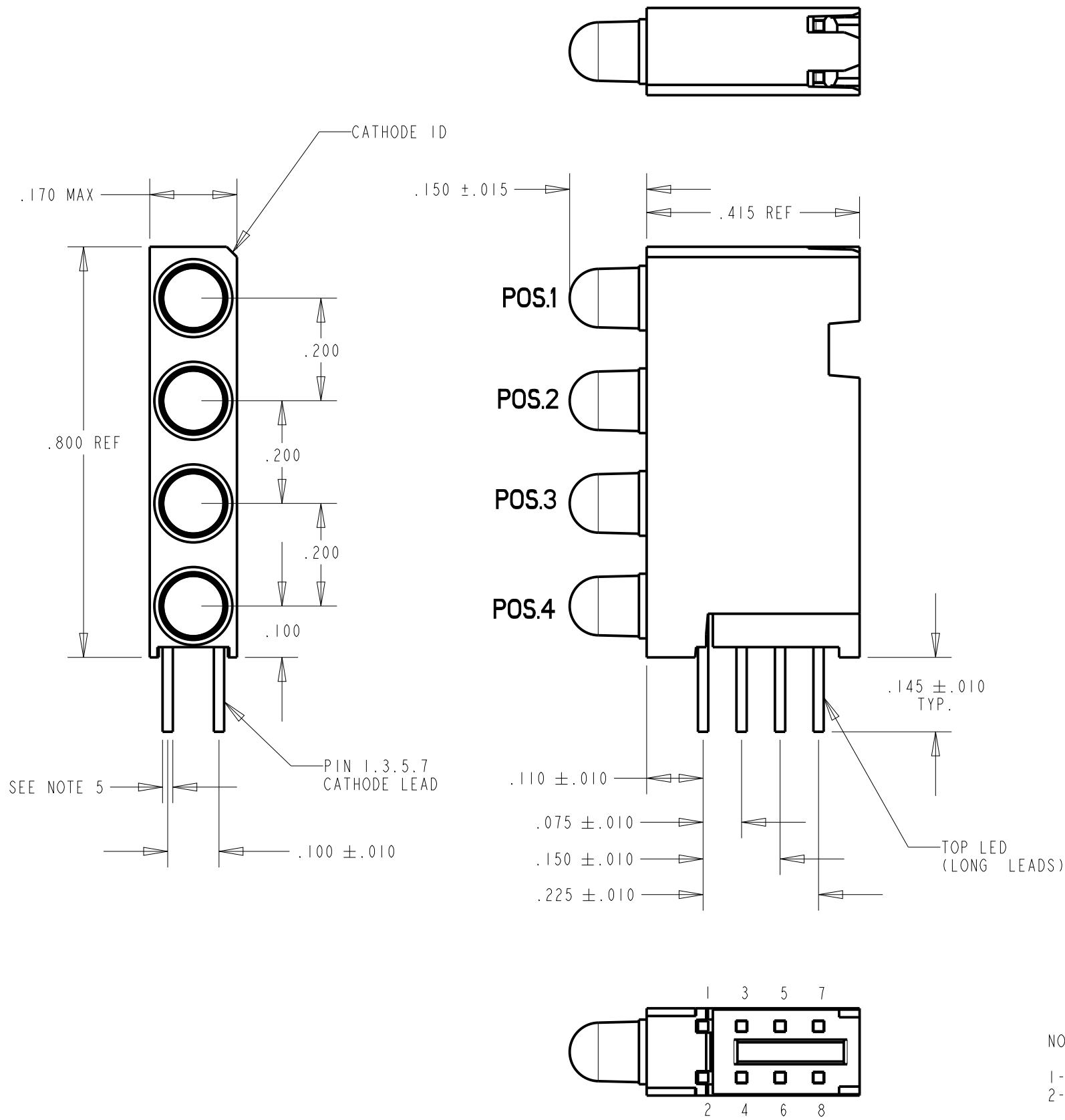
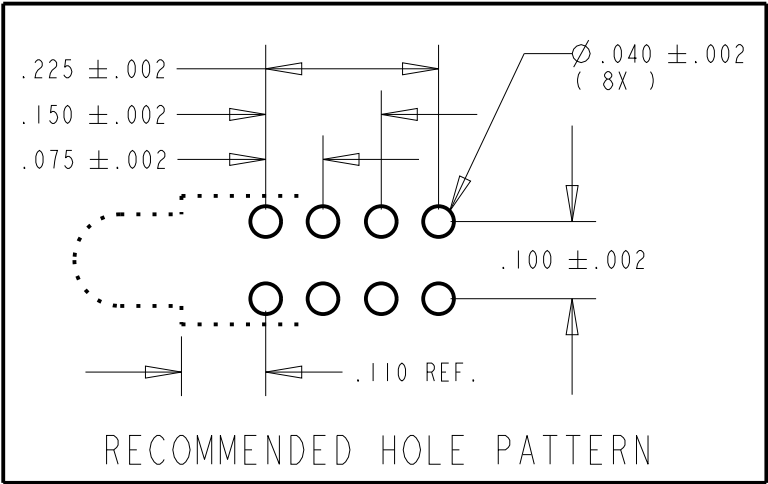
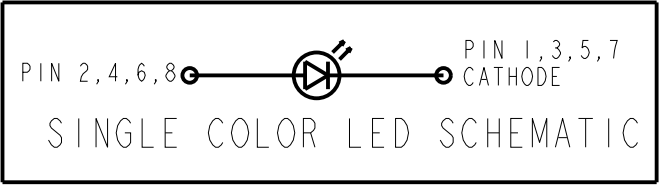


PART NUMBER and LEGEND	LED COLOR			
	POSITION 1	POSITION 2	POSITION 3	POSITION 4
568-0301-111F	RED	RED	RED	RED
568-0301-112F	RED	RED	RED	GREEN
568-0301-122F	RED	RED	GREEN	GREEN
568-0302-111F	GREEN	RED	RED	RED
568-0302-222F	GREEN	GREEN	GREEN	GREEN
568-0302-323F	GREEN	YELLOW	GREEN	YELLOW
568-0303-132F	YELLOW	RED	YELLOW	GREEN
568-0303-232F	YELLOW	GREEN	YELLOW	GREEN
568-0303-332F	YELLOW	YELLOW	YELLOW	GREEN
568-0303-333F	YELLOW	YELLOW	YELLOW	YELLOW

REV.	ECN NO.	REVISIONS	DRN.	CKD.	APP.	DATE
A	—	NEW RELEASE	RSK	WFB	NO	12-11-14

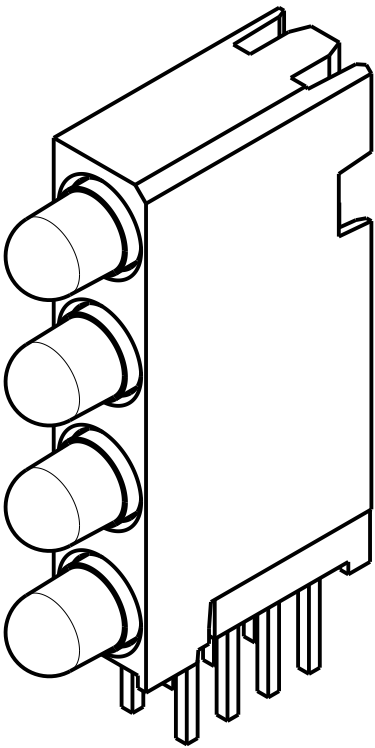


- NOTES:
- 1- LEADS TO FIT INTO HOLES SPACED AS PER HOLE PATTERN
  - 2- WHEN A ZERO APPEARS IN THE LAST 4 DIGITS OF THE PART NUMBER THIS MEANS NO LAMP REQUIRED IN THAT POSITION
  - 3- LED LEAD DIMENSIONS SHOWN ARE MEASURED AT HOUSING EXIT
  - 4- PIN NUMBERS FOR REFERENCE ONLY
  - 5- LED LEAD THICKNESS = .018 X .016 = ALL LEDs
  - 6- DIALIGHT PART NUMBER = 568-030X-XXXF (SEE CHART FOR ALL PART NUMBERS)



OPERATING CHARACTERISTICS AT 25°C AMBIENT						
CHARACTERISTICS	L.E.D. COLOR	MIN	TYP	MAX	UNITS	TEST CONDITIONS
LUMINOUS INTENSITY	RED	8.7	29		mcd	V <sub>F</sub> = 5.0 V
	YELLOW	3.7	12.6			
	GREEN	5.6	19			
FORWARD CURRENT	RED		10	15	mA	V <sub>F</sub> = 5.0 V
	YELLOW		10	15		
	GREEN		12	15		
REVERSE VOLTAGE	ALL	5			V	I = 100 μA
PEAK WAVELENGTH	RED		635		nm	
	YELLOW		583			
	GREEN		565			
VIEWING ANGLE	ALL		60		Degree	

ABSOLUTE MAXIMUM RATING AT 25°C AMBIENT				UNITS	RED	YELLOW	GREEN
REVERSE VOLTAGE I = 100 μA				V	5.0	5.0	5.0
D.C. FORWARD VOLTAGE				V	7.5	7.5	7.5
LEAD SOLDERING TEMPERATURE, 5 SEC., 1/16" FROM BODY				°C	260	260	260
OPERATING TEMPERATURE				°C	-40 TO +85	-40 TO +85	-40 TO +85
STORAGE TEMPERATURE				°C	-55 TO +100	-55 TO +100	-55 TO +100



THIS DRAWING AND THE CONTENTS HEREIN ARE CONFIDENTIAL AND THE SOLE PROPERTY OF DIALIGHT. REPRODUCTION OF THIS DRAWING OR CONSTRUCTION OF ANY PARTS WITHIN THIS DRAWING ARE FORBIDDEN WITHOUT THE WRITTEN CONSENT OF DIALIGHT.					
SCALE: 4.000		DRAWING NUMBER		REV	
ALL DIM'S IN: INCHES (MM)		C-18135		A	
TOLERANCES: UNLESS OTHERWISE SPECIFIED		TITLE STANDARD 4XI CBI BLOCK			
FRACTIONS: ±1/64					
DECIMALS (.XX): ±.020					
DECIMALS (.XXX): ±.005					
DECIMALS (.XXXX): ±.0005		MATERIAL			
ANGLES: ±3°		Dialight 1501 ROUTE 34 SOUTH FARMINGDALE, NJ 07727			
FINISH:					
FSCM 83330		SHEET 1 OF 1 FAMILY TABLE:			

# Mouser Electronics

Authorized Distributor

Click to View Pricing, Inventory, Delivery & Lifecycle Information:

Dialight:

[568-0301-111F](#) [568-0302-222F](#) [568-0302-323F](#) [568-0303-232F](#)