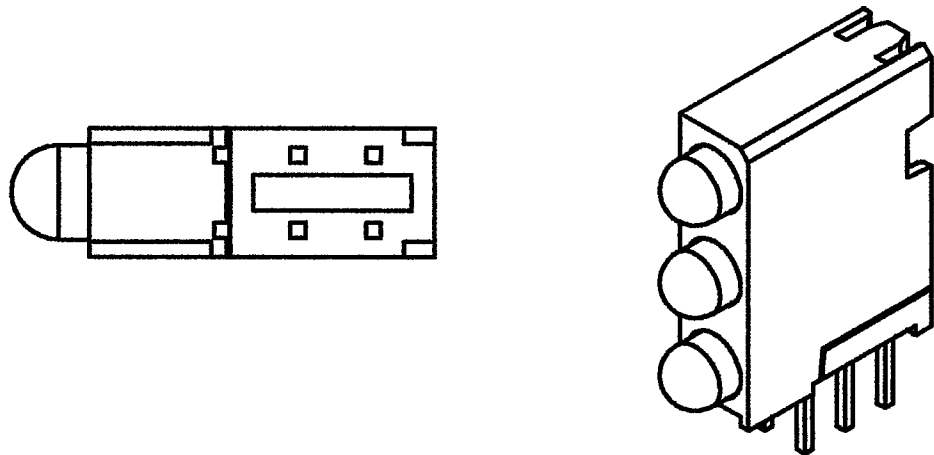
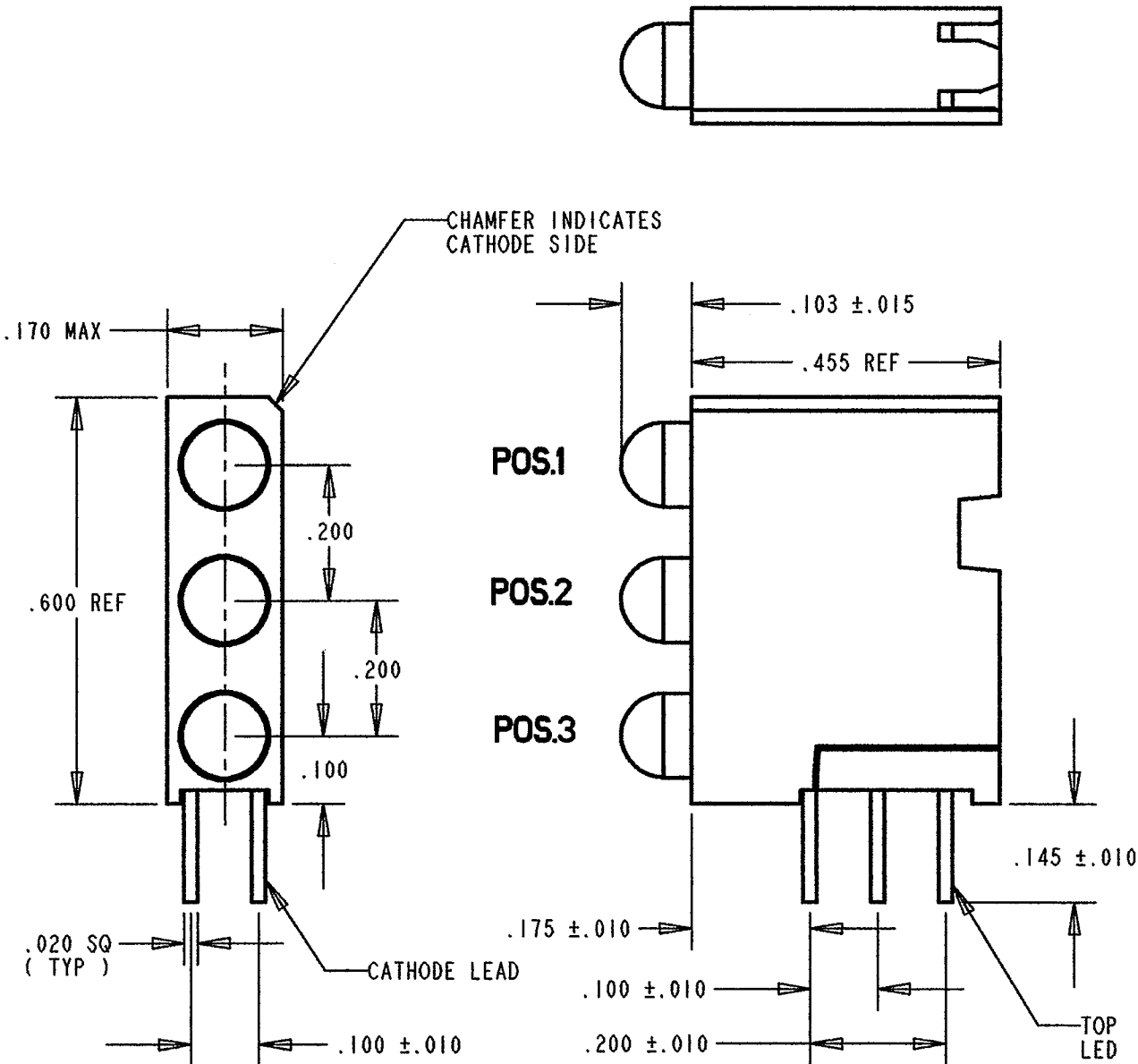
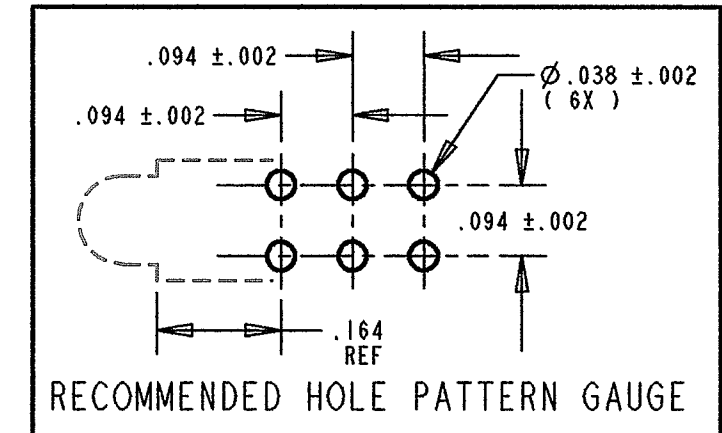


REV	ECN NO	REVISIONS	DRN	CKD	APP	DATE
A	—	NEW RELEASE	ALV	7.8	9-7-07	

PART NUMBER and LEGEND	LED COLOR		
	POSITION 1	POSITION 2	POSITION 3
564-0200-100F	RED DIFFUSED	** BLANK **	** BLANK **
564-0200-111F	RED DIFFUSED	RED DIFFUSED	RED DIFFUSED
564-0200-121F	RED DIFFUSED	GREEN DIFFUSED	RED DIFFUSED
564-0200-122F	RED DIFFUSED	GREEN DIFFUSED	GREEN DIFFUSED
564-0200-123F	RED DIFFUSED	GREEN DIFFUSED	YELLOW DIFFUSED
564-0200-131F	RED DIFFUSED	YELLOW DIFFUSED	RED DIFFUSED
564-0200-132F	RED DIFFUSED	YELLOW DIFFUSED	GREEN DIFFUSED
564-0200-133F	RED DIFFUSED	YELLOW DIFFUSED	YELLOW DIFFUSED
564-0200-200F	GREEN DIFFUSED	** BLANK **	** BLANK **
564-0200-201F	GREEN DIFFUSED	** BLANK **	RED DIFFUSED
564-0200-202F	GREEN DIFFUSED	** BLANK **	GREEN DIFFUSED
564-0200-210F	GREEN DIFFUSED	RED DIFFUSED	** BLANK **
564-0200-211F	GREEN DIFFUSED	RED DIFFUSED	RED DIFFUSED
564-0200-212F	GREEN DIFFUSED	RED DIFFUSED	GREEN DIFFUSED
564-0200-220F	GREEN DIFFUSED	GREEN DIFFUSED	** BLANK **
564-0200-221F	GREEN DIFFUSED	GREEN DIFFUSED	RED DIFFUSED
564-0200-222F	GREEN DIFFUSED	GREEN DIFFUSED	GREEN DIFFUSED
564-0200-223F	GREEN DIFFUSED	GREEN DIFFUSED	YELLOW DIFFUSED
564-0200-230F	GREEN DIFFUSED	YELLOW DIFFUSED	** BLANK **
564-0200-231F	GREEN DIFFUSED	YELLOW DIFFUSED	RED DIFFUSED
564-0200-232F	GREEN DIFFUSED	YELLOW DIFFUSED	GREEN DIFFUSED
564-0200-233F	GREEN DIFFUSED	YELLOW DIFFUSED	YELLOW DIFFUSED
564-0200-310F	YELLOW DIFFUSED	RED DIFFUSED	** BLANK **
564-0200-311F	YELLOW DIFFUSED	RED DIFFUSED	RED DIFFUSED
564-0200-321F	YELLOW DIFFUSED	GREEN DIFFUSED	RED DIFFUSED
564-0200-322F	YELLOW DIFFUSED	GREEN DIFFUSED	GREEN DIFFUSED
564-0200-323F	YELLOW DIFFUSED	GREEN DIFFUSED	YELLOW DIFFUSED
564-0200-330F	YELLOW DIFFUSED	YELLOW DIFFUSED	** BLANK **
564-0200-331F	YELLOW DIFFUSED	YELLOW DIFFUSED	RED DIFFUSED
564-0200-332F	YELLOW DIFFUSED	YELLOW DIFFUSED	GREEN DIFFUSED
564-0200-333F	YELLOW DIFFUSED	YELLOW DIFFUSED	YELLOW DIFFUSED

DIFFUSED LENS COLOR	PEAK EMISSION WAVELENGTH (nm)	DOMINANT WAVELENGTH (nm) TYP.	VIEWING ANGLE () ° 2 θ-1/2	LUMINOUS INTENSITY (mcd) @ 2 mA; 25 C °		FORWARD VOLTAGE (V) @ I = 2 mA; 25 C °		REVERSE CURRENT (A); 25 C °	REVISIONS			
				MIN.	TYP.	TYP.	MAX.	MAX.	LTR.	ECN NO.	DRN	DATE
RED	635	---	60	1.0	1.6	1.7	2.2	10 @ V _R = 5 V	B	97101702	M.C.	10-17-97
GREEN	565	---	60	1.0	1.6	1.9	2.2	10 @ V _R = 5 V	B	97101702	M.C.	10-17-97
YELLOW	591	587	60	2.3	5.0	1.8	2.4	100 @ V _R = 5 V	C	05122201	TWC	12-22-05

ABSOLUTE MAXIMUM RATINGS AT 25° C AMBIENT			
POWER DISSIPATION	RED	GREEN	YELLOW
CONTINUOUS FORWARD CURRENT	20	20	75
PEAK FORWARD CURRENT (1/10 DUTY CYCLE, 0.1 ms PULSE WIDTH)	7	7	30
REVERSE VOLTAGE	500	500	60
SOLDERING TEMPERATURE (.063/(1.60) FROM BODY	5		
OPERATING TEMPERATURE	260°C FOR 5 SEC		
STORAGE TEMPERATURE	-55 TO +100	-40 TO +100	



- NOTES:
- LEADS TO FIT INTO HOLES SPACED AS PER HOLE PATTERN.
 - LEADS TO BE FREE OF DEFORMATION AFTER BENDING AND CUTTING.
 - LED LEAD DIMENSIONS SHOWN ARE MEASURED AT HOUSING EXIT.
 - DIALIGHT PART NUMBER: 564-0200-XXXX.
 - THIS ASSEMBLY CONTAINS ELECTROSTATIC DISCHARGE SENSITIVE DEVICES (ESDS). MAINTAIN ALL PRECAUTIONARY MEASURES DURING ASSEMBLY, HANDLING AND STORAGE IN ACCORDANCE WITH IPC-A-610.

RoHS Compliant 564-0200-XXXX

Part Numbers with the "F" suffix ending are RoHS Compliant.
Example: 564-0200-100F
Packaging is marked with "RoHS Compliant" label or equivalent markings.
Parts can be wave soldered, dip soldered or hand soldered using typical lead-free soldering process with max 260°C temp. for 5 sec.



ATTENTION:
OBSERVE PRECAUTIONS FOR
HANDLING ELECTROSTATIC
SENSITIVE DEVICES

THIS DRAWING AND THE CONTENTS HEREIN ARE CONFIDENTIAL AND THE SOLE PROPERTY OF DIALIGHT. REPRODUCTION OF THIS DRAWING OR CONSTRUCTION OF ANY PARTS WITHIN THIS DRAWING ARE FORBIDDEN WITHOUT THE WRITTEN CONSENT OF DIALIGHT.			
SCALE: DRAWING SCALE ALL DIM'S IN: INCHES (MM)		DRAWING NUMBER C-17533	REV A
TOLERANCES: UNLESS OTHERWISE SPECIFIED FRACTIONS: ±1/64 DECIMALS (.XX): ±.01 DECIMALS (.XXX): ±.005 DECIMALS (.XXXX): ±.0005 ANGLES: ±1°		TITLE STANDARD 3 X 1 CBI BLOCK RoHS COMPLIANT	
FINISH:		MATERIAL	
FSCM 83330		Dialight 1501 ROUTE 34 SOUTH FARMINGDALE, NJ 07727	
SHEET 1 OF 1		FAMILY TABLES:	

Mouser Electronics

Authorized Distributor

Click to View Pricing, Inventory, Delivery & Lifecycle Information:

Dialight:

<u>564-0200-232F</u>	<u>564-0200-333F</u>	<u>564-0200-100F</u>	<u>564-0200-211F</u>	<u>564-0200-331F</u>	<u>564-0200-131F</u>	<u>564-0200-122F</u>
<u>564-0200-332F</u>	<u>564-0200-322F</u>	<u>564-0200-221F</u>	<u>564-0200-121F</u>	<u>564-0200-230F</u>	<u>564-0200-201F</u>	<u>564-0200-223F</u>
<u>564-0200-310F</u>	<u>564-0200-200F</u>	<u>564-0200-212F</u>	<u>564-0200-231F</u>	<u>564-0200-133F</u>	<u>564-0200-330F</u>	<u>564-0200-233F</u>
<u>564-0200-311F</u>	<u>564-0200-123F</u>	<u>564-0200-220F</u>	<u>564-0200-202F</u>	<u>564-0200-321F</u>	<u>564-0200-210F</u>	<u>564-0200-323F</u>