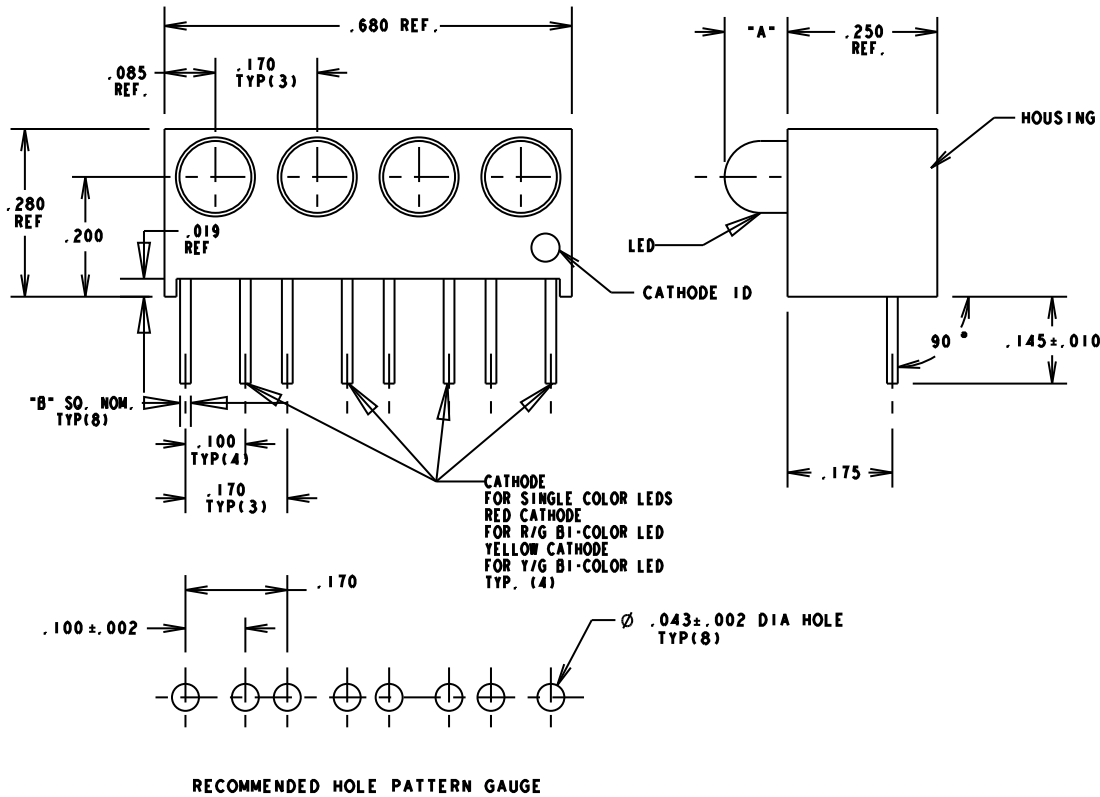


OPERATING CHARACTERISTICS AT 25°C AMBIENT FOR P/N 551-0207-004F (GREEN)					
LED CHARACTERISTICS	MIN	TYP	MAX	UNITS	TEST CONDITIONS
LUMINOUS INTENSITY	5.6	16.0		mc d	I _F =10mA
FORWARD VOLTAGE		2.1	3.0	V	I _F =10mA
REVERSE CURRENT			10	μA	V _R =3V
PEAK WAVELENGTH		563		nm	
2 = 1/2 INTENSITY ANGLE		45		°	I _F =10mA
CAPACITANCE		16		pf	V _R =0V, f=1 MHz
ABSOLUTE MAXIMUM RATINGS AT 25°C AMBIENT					
POWER DISSIPATION					75 mW
DERATE LINEALY FROM 50°C					.50 mA/°C
CONTINUOUS FORWARD CURRENT					25 mA
PEAK FORWARD CURRENT					60 mA
PEAK REVERSE VOLTAGE					3 V
LEAD SOLDERING TEMP. 5 SEC. 1/16" FROM BASE					260°C
OPERATING TEMPERATURE					-25°C TO 85°C
STORAGE TEMPERATURE					-30°C TO 100°C

OPERATING CHARACTERISTICS AT 25°C AMBIENT FOR P/N 551-0307-004F (YELLOW)					
LED CHARACTERISTICS	MIN	TYP	MAX	UNITS	TEST CONDITIONS
LUMINOUS INTENSITY	2.2	6.3		mc d	I _F =10mA
FORWARD VOLTAGE		2.1	3.0	V	I _F =10mA
REVERSE VOLTAGE	3			V	I _R = 10μA
PEAK WAVELENGTH		585		nm	
2 = 1/2 INTENSITY ANGLE		45		°	I _F =10mA
CAPACITANCE		5		pf	V _R =0V, f=1 MHz
ABSOLUTE MAXIMUM RATINGS AT 25°C AMBIENT					
POWER DISSIPATION					60 mW
DERATE LINEALY FROM 50°C					.50 mA/°C
CONTINUOUS FORWARD CURRENT					20 mA
PEAK FORWARD CURRENT					60 mA
PEAK REVERSE VOLTAGE					3 V
LEAD SOLDERING TEMP. 5 SEC. 1/16" FROM BASE					260°C
OPERATING TEMPERATURE					-25°C TO 85°C
STORAGE TEMPERATURE					-30°C TO 100°C

OPERATING CHARACTERISTICS AT 25°C AMBIENT FOR P/N 551-0407-004F (RED)					
LED CHARACTERISTICS	MIN	TYP	MAX	UNITS	TEST CONDITIONS
LUMINOUS INTENSITY	3.6	10		mc d	I _F =10mA
FORWARD VOLTAGE		2.0	3.0	V	I _F =10mA
REVERSE VOLTAGE	3			V	I _R = 10μA
PEAK WAVELENGTH		650		nm	
2 = 1/2 INTENSITY ANGLE		45		°	I _F =10mA
CAPACITANCE		9.2		pf	V _R =0V, f=1 MHz
ABSOLUTE MAXIMUM RATINGS AT 25°C AMBIENT					
POWER DISSIPATION					60 mW
DERATE LINEALY FROM 50°C					.50 mA/°C
CONTINUOUS FORWARD CURRENT					20 mA
PEAK FORWARD CURRENT					60 mA
PEAK REVERSE VOLTAGE					3 V
LEAD SOLDERING TEMP. 5 SEC. 1/16" FROM BASE					260°C
OPERATING TEMPERATURE					-25°C TO 85°C
STORAGE TEMPERATURE					-30°C TO 100°C

PART NUMBER	LED COLOR	DIM. "A"	DIM. "B"
551-0207-004F	GREEN	.113±.012	.020
551-0307-004F	YELLOW	.113±.012	.020
551-0407-004F	RED	.113±.012	.020
551-0507-004F	RED	.103±.012	.018
551-0607-004F	GREEN	.103±.012	.018
551-0707-004F	YELLOW	.103±.012	.018
551-1107-004F	RED	.103±.012	.018
551-1207-004F	YELLOW	.103±.012	.018
551-1307-004F	GREEN	.103±.012	.018
551-1407-004F	AlGaAs RED	.103±.012	.018
551-2507-004F	ORANGE	.103±.012	.018
551-3007-004F	RED/GREEN	.103±.012	.020
551-3107-004F	YELLOW/GREEN	.103±.012	.018



RECOMMENDED HOLE PATTERN GAUGE

OPERATING CHARACTERISTICS AT 25°C AMBIENT FOR P/N 551-0507-004F (RED)					
LED CHARACTERISTICS	MIN	TYP	MAX	UNITS	TEST CONDITIONS
LUMINUOS INTENSITY	8.7	29		mc d	V _F =5 V
FORWARD CURRENT		10	20	mA	V _F =5 V
REVERSE CURRENT			100	μA	V _R =5 V
PEAK WAVELENGTH		635		nm	
2 = 1/2 INTENSITY ANGLE		60		°	
ABSOLUTE MAXIMUM RATINGS AT 25°C AMBIENT					
FORWARD VOLTAGE					7.5 V
DERATE LINEALY FROM 50°C					.086 V/°C
REVERSE VOLTAGE					5 V
LEAD SOLDERING TEMP. 5 SEC. (.063/1.60)" FROM BODY					260°C
OPERATING TEMPERATURE					-40°C TO 85°C
STORAGE TEMPERATURE					-55°C TO 100°C

REV	ECN NO	REVISIONS	DRN	CKD	APP	DATE
A	—	NEW RELEASE	ALV	MES	NO	8-8-07
B	—	ADDED P/NS 551-3007-004F & 551-3107-004F	AJF	KLJ	NO	5-8-11

RoHS COMPLIANT 551-XX07-004F

Part Numbers with the "F" suffix ending are RoHS Compliant. For example: 551-0207-004F
Packaging is marked with "RoHS Compliant" label or equivalent markings. Parts can be wave soldered, dip soldered or hand soldered using typical lead-free soldering process with max 260°C temp. for 5 sec.

NOTES:

- LED LEAD DIMENSIONS SHOWN ARE MEASURED AT HOUSING EXIT.
- LEADS TO FIT INTO HOLES SPACED AS PER PATTERN.
- DIALIGHT PART NUMBERS: 551-XX07-004F.
- THIS ASSEMBLY CONTAINS ELECTROSTATIC DISCHARGE SENSITIVE DEVICES (ESDS). MAINTAIN ALL PRECAUTIONARY MEASURES DURING ASSEMBLY, HANDLING, AND STORAGE IN ACCORDANCE WITH IPC-A-610.

OPERATING CHARACTERISTICS AT 25°C AMBIENT FOR P/N 551-3107-004F (Y/G)						
LED CHARACTERISTICS	COLOR	MIN	TYP	MAX	UNITS	TEST CONDITIONS
LUMINOUS INTENSITY	YELLOW	3.0		8.5	mcd	If=10mA
	GREEN	6.5		18.0		
FORWARD VOLTAGE	YELLOW		2.1	2.6	V	If=10mA
	GREEN		2.1	2.6		
REVERSE CURRENT	ALL			100	μA	Vr=3V
PEAK WAVELENGTH	YELLOW		585		nm	
	GREEN		565			
2 = 1/2 INTENSITY ANGLE	ALL		80		°	If=10mA
ABSOLUTE MAXIMUM RATINGS AT 25°C AMBIENT				YELLOW		GREEN
POWER DISSIPATION				60 mW		100 mW
DERATE LINEALY FROM 50°C				.25 mA/°C		.40 mA/°C
CONTINUOUS FORWARD CURRENT				20 mA		30 mA
PEAK FORWARD CURRENT				80 mA		120 mA
PEAK REVERSE VOLTAGE				5 V		5 V
LEAD SOLDERING TEMP. 5 SEC. 1/16" FROM BASE				260°C		
OPERATING TEMPERATURE				-55°C TO +100°C		
STORAGE TEMPERATURE				-55°C TO +100°C		



ATTENTION:
OBSERVE PRECAUTIONS FOR
HANDLING ELECTROSTATIC
SENSITIVE DEVICES

THIS DRAWING AND THE CONTENTS HEREIN ARE CONFIDENTIAL AND THE SOLE PROPERTY OF DIALIGHT. REPRODUCTION OF THIS DRAWING OR CONSTRUCTION OF ANY PARTS WITHIN THIS DRAWING ARE FORBIDDEN WITHOUT THE WRITTEN CONSENT OF DIALIGHT.		
SCALE: DRAWING SCALE ALL DIM'S IN: INCHES (MM)	DRAWING NUMBER C-17509	REV B
TOLERANCES: UNLESS OTHERWISE SPECIFIED FRACTIONS: ±1/64 DECIMALS (.XX): ±.01 DECIMALS (.XXX): ±.005 DECIMALS (.XXXX): ±.0005 ANGLES: ±1°	TITLE 3mm QUAD LED CBI RoHS COMPLIANT	
FINISH:	MATERIAL	
FSCM 83330	Dialight oooooooooooo	1501 ROUTE 34 SOUTH FARMINGDALE, NJ 07727
SHEET 1 OF 2		FAMILY TABLE:

OPERATING CHARACTERISTICS AT 25°C AMBIENT FOR P/N 551-0707-004F (YELLOW)					
LED CHARACTERISTICS	MIN	TYP	MAX	UNITS	TEST CONDITIONS
LUMINUOS INTENSITY	3.7	12.6		mc d	Vr=5 V
FORWARD CURRENT		10	20	mA	Vr=5 V
REVERSE CURRENT			100	μ A	Vr=5 V
PEAK WAVELENGTH		585		nm	
2 = 1/2 INTENSITY ANGLE		60		DEGREES	
ABSOLUTE MAXIMUM RATINGS AT 25°C AMBIENT					
FORWARD VOLTAGE					7.5 V
DERATE LINEALY FROM 50°C					.086 V/°C
REVERSE VOLTAGE					5 V
LEAD SOLDERING TEMP. 5 SEC. (.063/1.60)" FROM BODY					260°C
OPERATING TEMPERATURE					-40°C TO 85°C
STORAGE TEMPERATURE					-55°C TO 100°C

OPERATING CHARACTERISTICS AT 25°C AMBIENT FOR P/N 551-1107-004F (RED)					
LED CHARACTERISTICS	MIN	TYP	MAX	UNITS	TEST CONDITIONS
LUMINUOS INTENSITY	1.0	1.6		mc d	If=2mA
FORWARD VOLTAGE		1.7	2.2	mA	If=2mA
REVERSE CURRENT			10	μ A	Vr=5 V
PEAK WAVELENGTH		635		nm	
2 = 1/2 INTENSITY ANGLE		60		DEGREES	
ABSOLUTE MAXIMUM RATINGS AT 25°C AMBIENT					
POWER DISSIPATION					20 mW
CONTINUOUS FORWARD CURRENT					7 mA
PEAK FORWARD CURRENT (1/10 DUTY CYCLE, 0.1 ms PULSE WIDTH)					500 mA
REVERSE VOLTAGE					5 V
LEAD SOLDERING TEMP. 5 SEC. (.063/1.60)" FROM BODY					260°C
OPERATING TEMPERATURE					-55°C TO 100°C
STORAGE TEMPERATURE					-55°C TO 100°C

OPERATING CHARACTERISTICS AT 25°C AMBIENT FOR P/N 551-1207-004F (YELLOW)					
LED CHARACTERISTICS	MIN	TYP	MAX	UNITS	TEST CONDITIONS
LUMINUOS INTENSITY	2.3	5		mc d	If=2mA
FORWARD VOLTAGE		1.8	2.4	mA	If=2mA
REVERSE CURRENT			100	μ A	Vr=5 V
PEAK WAVELENGTH		591		nm	
2 = 1/2 INTENSITY ANGLE		60		DEGREES	
ABSOLUTE MAXIMUM RATINGS AT 25°C AMBIENT					
POWER DISSIPATION					75 mW
CONTINUOUS FORWARD CURRENT					30 mA
PEAK FORWARD CURRENT (1/10 DUTY CYCLE, 0.1 ms PULSE WIDTH)					60 mA
REVERSE VOLTAGE					5 V
LEAD SOLDERING TEMP. 5 SEC. (.063/1.60)" FROM BODY					260°C
OPERATING TEMPERATURE					-40°C TO 100°C
STORAGE TEMPERATURE					-55°C TO 100°C


OPERATING CHARACTERISTICS AT 25°C AMBIENT FOR P/N 551-1407-004F (RED)					
LED CHARACTERISTICS	MIN	TYP	MAX	UNITS	TEST CONDITIONS
LUMINOUS INTENSITY	2	3		mc d	If=10mA
FORWARD VOLTAGE		1.6	1.8	V	If=10mA
REVERSE VOLTAGE	5			V	Ir=100μ A
PEAK WAVELENGTH		645		nm	
2 = 1/2 INTENSITY ANGLE		45		DEGREES	If=10mA
CAPACITANCE		30		pf	Vr=0V, f=1MHz
ABSOLUTE MAXIMUM RATINGS AT 25°C AMBIENT					
POWER DISSIPATION					87 mW
DERATE LINEALY FROM 50°C					.50 mA/°C
CONTINUOUS FORWARD CURRENT					30 mA
PEAK PULSE CURRENT 10 μ s PULSE					300 mA
PEAK REVERSE VOLTAGE					5 V
LEAD SOLDERING TEMP. 5 SEC. 1/16" FROM BASE					260°C
OPERATING TEMPERATURE					-20°C TO 100°C
STORAGE TEMPERATURE					-55°C TO 100°C

OPERATING CHARACTERISTICS AT 25°C AMBIENT FOR P/N 551-2507-004F (ORANGE)					
LED CHARACTERISTICS	MIN	TYP	MAX	UNITS	TEST CONDITIONS
LUMINOUS INTENSITY	3.4	7.0	10.8	mc d	If=10mA
FORWARD VOLTAGE	1.5	1.9	2.4	V	If=10mA
REVERSE CURRENT			100	μ A	Vr=5 V
PEAK WAVELENGTH		600		nm	
2 = 1/2 INTENSITY ANGLE		60		DEGREES	If=10mA
CAPACITANCE		4		pf	Vr=0V, f=1MHz
ABSOLUTE MAXIMUM RATINGS AT 25°C AMBIENT					
POWER DISSIPATION					135 mW
DERATE LINEALY FROM 50°C					.50 mA/°C
AVERAGE FORWARD CURRENT					25 mA
PEAK FORWARD CURRENT					90 mA
REVERSE VOLTAGE					5 V
LEAD SOLDERING TEMP. 5 SEC. 1/16" FROM BASE					260°C
OPERATING TEMPERATURE					-55°C TO 100°C
STORAGE TEMPERATURE					-55°C TO 100°C

OPERATING CHARACTERISTICS AT 25°C AMBIENT FOR P/N 551-0607-004F (GREEN)					
LED CHARACTERISTICS	MIN	TYP	MAX	UNITS	TEST CONDITIONS
LUMINUOS INTENSITY	5.6	19		mc d	Vr=5 V
FORWARD CURRENT		10	20	mA	Vr=5 V
REVERSE CURRENT			100	μ A	Vr=5 V
PEAK WAVELENGTH		565		nm	
2 = 1/2 INTENSITY ANGLE		60		DEGREES	
ABSOLUTE MAXIMUM RATINGS AT 25°C AMBIENT					
FORWARD VOLTAGE					7.5 V
DERATE LINEALY FROM 50°C					.086 V/°C
REVERSE VOLTAGE					5 V
LEAD SOLDERING TEMP. 5 SEC. (.063/1.60)" FROM BODY					260°C
OPERATING TEMPERATURE					-40°C TO 85°C
STORAGE TEMPERATURE					-55°C TO 100°C

OPERATING CHARACTERISTICS AT 25°C AMBIENT FOR P/N 551-1307-004F (GREEN)					
LED CHARACTERISTICS	MIN	TYP	MAX	UNITS	TEST CONDITIONS
LUMINUOS INTENSITY	1.0	1.6		mc d	If=2mA
FORWARD VOLTAGE		1.9	2.2	mA	If=2mA
REVERSE CURRENT			10	μ A	Vr=5 V
PEAK WAVELENGTH		565		nm	
2 = 1/2 INTENSITY ANGLE		60		DEGREES	
ABSOLUTE MAXIMUM RATINGS AT 25°C AMBIENT					
POWER DISSIPATION					20 mW
CONTINUOUS FORWARD CURRENT					7 mA
PEAK FORWARD CURRENT (1/10 DUTY CYCLE, 0.1 ms PULSE WIDTH)					500 mA
REVERSE VOLTAGE					5 V
LEAD SOLDERING TEMP. 5 SEC. (.063/1.60)" FROM BODY					260°C
OPERATING TEMPERATURE					-55°C TO 100°C
STORAGE TEMPERATURE					-55°C TO 100°C

OPERATING CHARACTERISTICS AT 25°C AMBIENT FOR P/N 551-3007-004F (R/G)						
LED CHARACTERISTICS	COLOR	MIN	TYP	MAX	UNITS	TEST CONDITIONS
LUMINOUS INTENSITY	RED	3.0	5.6		mc d	If=20mA
	GREEN	3.7	8.7			
FORWARD VOLTAGE	RED		2.0	2.6	V	If=20mA
	GREEN		2.1	2.6		
REVERSE CURRENT	ALL			100	μ A	Vr=5V
PEAK WAVELENGTH	RED		630		nm	
	GREEN		565			
2 = 1/2 INTENSITY ANGLE	ALL		200		°	If=20mA
ABSOLUTE MAXIMUM RATINGS AT 25°C AMBIENT				RED/GREEN		
POWER DISSIPATION				100 mW		
DERATE LINEALY FROM 50°C				.40 mA/°C		
CONTINUOUS FORWARD CURRENT				30 mA		
PEAK FORWARD CURRENT				120 mA		
PEAK REVERSE VOLTAGE				5 V		
LEAD SOLDERING TEMP. 5 SEC. 1/16" FROM BASE				260°C		
OPERATING TEMPERATURE				-55°C TO +100°C		
STORAGE TEMPERATURE				-55°C TO +100°C		

THIS DRAWING AND THE CONTENTS HEREIN ARE CONFIDENTIAL AND THE SOLE PROPERTY OF DIALIGHT. REPRODUCTION OF THIS DRAWING OR CONSTRUCTION OF ANY PARTS WITHIN THIS DRAWING ARE FORBIDDEN WITHOUT THE WRITTEN CONSENT OF DIALIGHT.		
SCALE: DRAWING SCALE ALL DIM'S IN: INCHES (MM)	DRAWING NUMBER C-17509	REV B
TOLERANCES: UNLESS OTHERWISE SPECIFIED FRACTIONS: ±1/64 DECIMALS (.XX): ±.01 DECIMALS (.XXX): ±.005 DECIMALS (.XXXX): ±.0005 ANGLES: ±1°	TITLE 3 mm QUAD LED CBI RoHS COMPLIANT	
FINISH:	MATERIAL	
FSCM 83330		1501 ROUTE 34 SOUTH FARMINGDALE, NJ 07727
SHEET 2 OF 2		FAMILY TABLE:

Mouser Electronics

Authorized Distributor

Click to View Pricing, Inventory, Delivery & Lifecycle Information:

Dialight:

[551-3007-004F](#) [551-3107-004F](#)