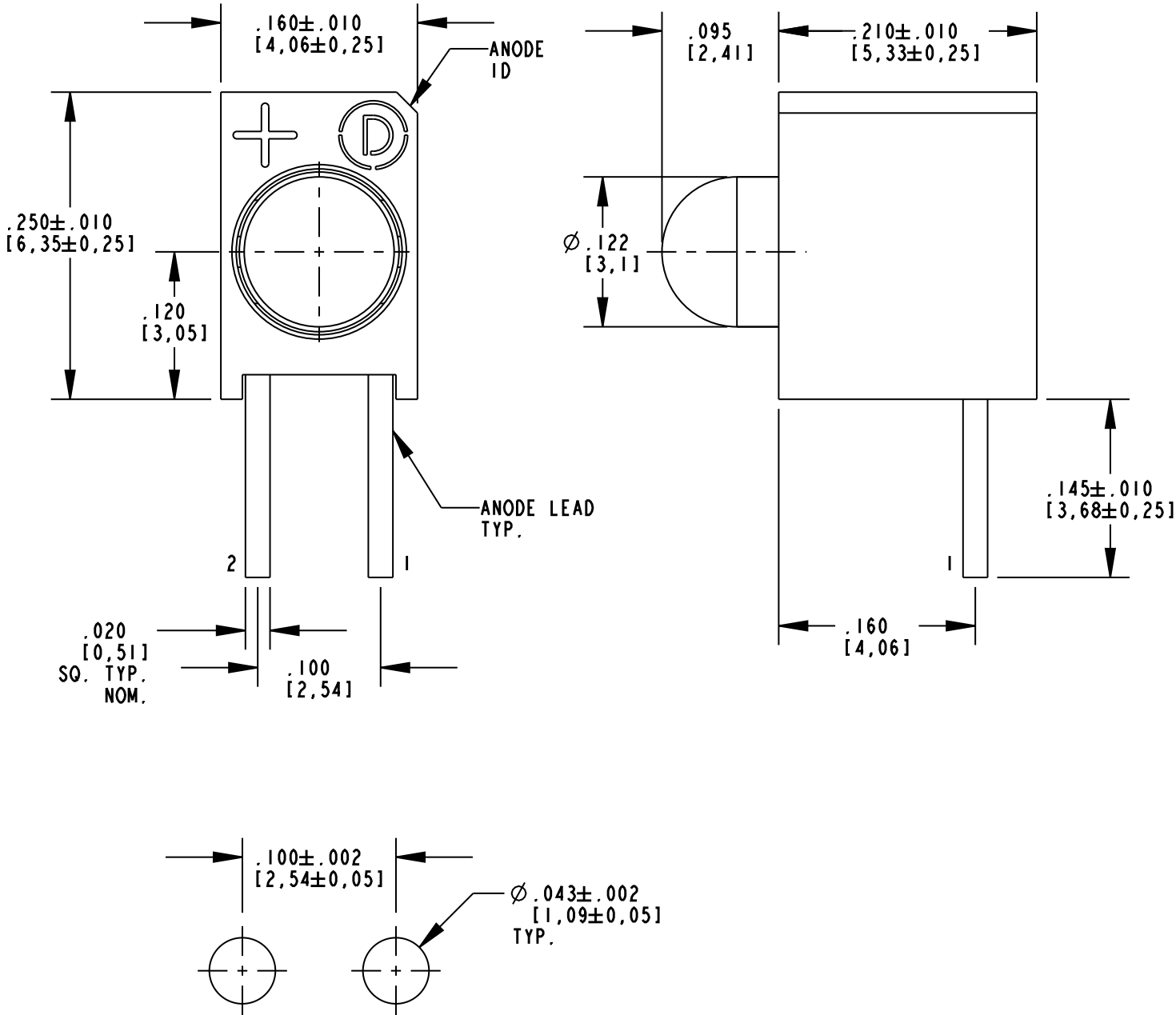


DIALIGHT PART NUMBER	LED COLOR
551-0209-010F	GREEN DIFFUSED
551-0309-010F	YELLOW DIFFUSED
551-0409-010F	RED DIFFUSED

REV	ECN NO	REVISIONS	DRN	CKD	APP	DATE
A	—	NEW RELEASE	AJF	KLJ	NO	10-18-10

RoHS COMPLIANT 551-0X09-010F
Part Numbers with the "F" suffix ending are RoHS Compliant.
For example: 551-0209-010F
Packaging is marked with "RoHS Compliant" label or equivalent markings. Parts can be wave soldered, dip soldered or hand soldered using typical lead-free soldering process with max 260°C temp. for 5 sec.



OPERATING CHARACTERISTICS AT 25°C AMBIENT						
LED CHARACTERISTICS	LED COLOR	MIN.	TYP.	MAX.	UNITS	TEST CONDITIONS
LUMINOUS INTENSITY	GREEN	5.6	16.0		mcd	I _f = 10 mA
	YELLOW	2.2	6.3			
	RED	3.6	10.0			
DOMINANT WAVELENGTH	GREEN	567	572	577	nm	
	YELLOW	582	587	592		
	RED	625	630	635		
PEAK WAVELENGTH	GREEN		563		nm	
	YELLOW		585			
	RED		650			
FORWARD VOLTAGE	GREEN		2.1	3.0	V	I _f = 10 mA
	YELLOW		2.1	3.0		
	RED		2.0	3.0		
REVERSE CURRENT	GREEN			10	μA	V _r = 3 V
	YELLOW			10		
	RED			10		
VIEWING ANGLE	ALL		45		DEGREE	

ABSOLUTE MAXIMUM RATINGS AT 25°C AMBIENT	GREEN	YELLOW	RED	UNITS
POWER DISSIPATION	75	60	60	mW
PEAK FORWARD CURRENT (1/10 DUTY CYCLE, 0.1ms PULSE WIDTH)	60	60	60	mA
CONTINUOUS FORWARD CURRENT	25	20	20	mA
LINEAR DERATING FROM 50°C	0.5	0.5	0.5	mA/°C
REVERSE VOLTAGE	3	3	3	V
LEAD SOLDERING TEMPERATURE (.063" [1.6mm] FROM BODY) FOR 5 SEC.	260			°C
OPERATING TEMPERATURE	-25 TO +85			°C
STORAGE TEMPERATURE	-30 TO +100			°C

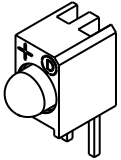
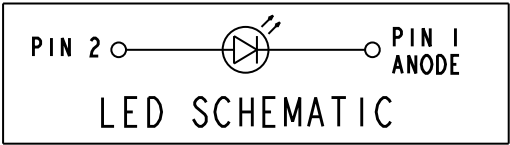
RECOMMENDED HOLE PATTERN GAUGE

NOTES:

- LED LEAD DIMENSIONS SHOWN ARE MEASURED AT HOUSING EXIT.
- LEADS TO FIT INTO HOLES SPACED AS PER PATTERN.
- PIN NUMBERS FOR REFERENCE ONLY, DESIGNATION NON-EXISTENT ON PART.
- DIALIGHT PART NUMBERS: 551-0X09-010F.
- THIS ASSEMBLY CONTAINS ELECTROSTATIC DISCHARGE SENSITIVE DEVICES (ESDS). MAINTAIN ALL PRECAUTIONARY MEASURES DURING ASSEMBLY, HANDLING, AND STORAGE IN ACCORDANCE WITH IPC-A-610.



ATTENTION:
OBSERVE PRECAUTIONS FOR
HANDLING ELECTROSTATIC
SENSITIVE DEVICES



SCALE 2.000

THIS DRAWING AND THE CONTENTS HEREIN ARE CONFIDENTIAL AND THE SOLE PROPERTY OF DIALIGHT. REPRODUCTION OF THIS DRAWING OR CONSTRUCTION OF ANY PARTS WITHIN THIS DRAWING ARE FORBIDDEN WITHOUT THE WRITTEN CONSENT OF DIALIGHT.			
SCALE: 8.000	DRAWING NUMBER		REV
ALL DIM'S IN: INCHES (MM)	C-17873		A
TOLERANCES: UNLESS OTHERWISE SPECIFIED	TITLE		
FRACTIONS: ±1/64	Ø 3mm RT. ANGLE CBI, REVERSE POLARITY		
DECIMALS (.XX): ±.02	MATERIAL		
DECIMALS (.XXX): ±.015	-		
ANGLES: ±1°	Dialight		
FINISH:	1501 ROUTE 34 SOUTH FARMINGDALE, NJ 07727		
FSCM 83330	SHEET 1 OF 1 FAMILY TABLE:		

Mouser Electronics

Authorized Distributor

Click to View Pricing, Inventory, Delivery & Lifecycle Information:

Dialight:

[551-0209-010F](#) [551-0309-010F](#) [551-0409-010F](#)