

| PART NUMBER | LED COLOR | |
|----------------|---------------------|---------------------|
| | POSITION 1 | POSITION 2 |
| 553-0102-400 | ** BLANK ** | GREEN DIFFUSED |
| 553-0111-400 | RED DIFFUSED | RED DIFFUSED |
| 553-0112-400 | RED DIFFUSED | GREEN DIFFUSED |
| 553-0117-400 | RED DIFFUSED | ORANGE DIFFUSED |
| 553-0121-400 | GREEN DIFFUSED | RED DIFFUSED |
| 553-0122-400 | GREEN DIFFUSED | GREEN DIFFUSED |
| 553-0123-400 | GREEN DIFFUSED | YELLOW DIFFUSED |
| 553-0132-400 | YELLOW DIFFUSED | GREEN DIFFUSED |
| 553-0133-400 | YELLOW DIFFUSED | YELLOW DIFFUSED |
| 553-0172-400 | ORANGE DIFFUSED | GREEN DIFFUSED |
| 553-0177-400 | ORANGE DIFFUSED | ORANGE DIFFUSED |
| * 553-0188-400 | BLUE DIFFUSED | BLUE DIFFUSED |
| 553-0201-400 | ** BLANK ** | RED 2mA |
| 553-0202-400 | ** BLANK ** | GREEN 2 mA |
| 553-0203-400 | ** BLANK ** | YELLOW 2 mA |
| 553-0211-400 | RED 2 mA | RED 2 mA |
| 553-0212-400 | RED 2 mA | GREEN 2 mA |
| 553-0213-400 | RED 2 mA | YELLOW 2 mA |
| 553-0221-400 | GREEN 2 mA | RED 2 mA |
| 553-0222-400 | GREEN 2 mA | GREEN 2 mA |
| 553-0223-400 | GREEN 2 mA | YELLOW 2 mA |
| 553-0232-400 | YELLOW 2 mA | GREEN 2 mA |
| 553-0233-400 | YELLOW 2 mA | YELLOW 2 mA |
| 553-0311-400 | RED 5 V | RED 5 V |
| 553-0312-400 | RED 5 V | GREEN 5 V |
| 553-0313-400 | RED 5 V | YELLOW 5 V |
| 553-0322-400 | GREEN 5 V | GREEN 5 V |
| 553-0333-400 | YELLOW 5 V | YELLOW 5 V |
| 553-0711-400 | RED / GREEN | RED / GREEN |
| 553-0744-400 | YELLOW / GREEN | YELLOW / GREEN |
| 553-2211-400 | RED NON-DIFFUSED | RED NON-DIFFUSED |
| 553-2222-400 | GREEN NON-DIFFUSED | GREEN NON-DIFFUSED |
| 553-2233-400 | YELLOW NON-DIFFUSED | YELLOW NON-DIFFUSED |

| 5 V., INTEGRAL RESISTOR LED OPERATING CHARACTERISTICS AT 25°C AMBIENT (FOR 553-03XX-400) | | | | | | |
|--|--------------|-----|------|-----|--------|------------------------|
| CHARACTERISTICS | L.E.D. COLOR | MIN | TYP | MAX | UNITS | TEST COND. |
| LUMINOUS INTENSITY | RED | 8.7 | 29 | | mcd | V _f = 5 V |
| | YELLOW | 3.7 | 12.6 | | | |
| | GREEN | 5.6 | 19 | | | |
| FORWARD CURRENT | RED | | 10 | 20 | mA | V _f = 5 V |
| | YELLOW | | 10 | 20 | | |
| | GREEN | | 12 | 20 | | |
| REVERSE VOLTAGE | ALL | 5 | | | V | I _R = 100µA |
| PEAK WAVELENGTH | RED | | 635 | | nm | MEASURED AT PEAK |
| | YELLOW | | 585 | | | |
| | GREEN | | 565 | | | |
| VIEWING ANGLE | ALL | | 60 | | Degree | |

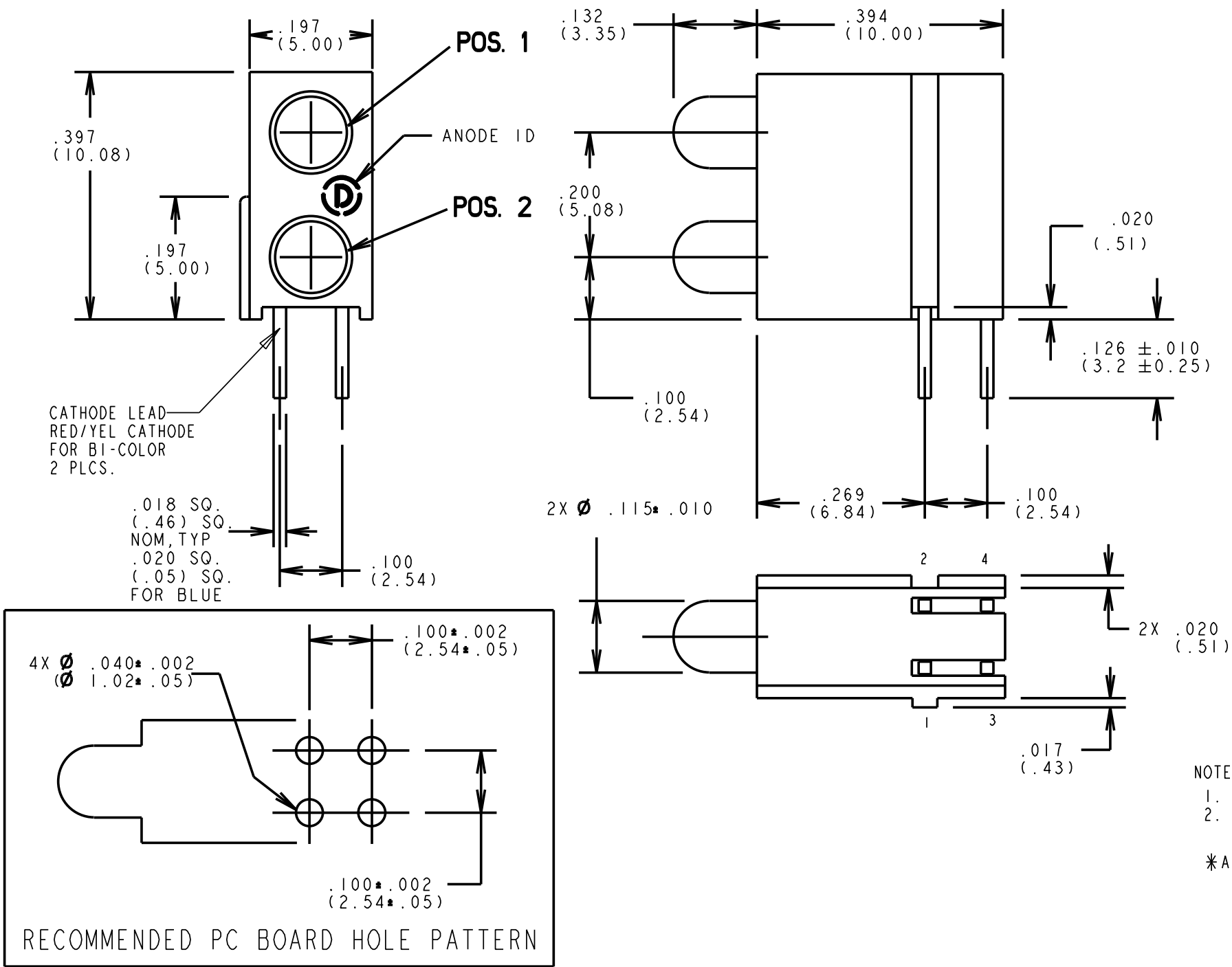
| BI-COLOR LED OPERATING CHARACTERISTICS AT 25°C AMBIENT (FOR 553-07XX-400) | | | | | | |
|---|--------------|-----|---------|-----|--------|------------------------|
| CHARACTERISTICS | L.E.D. COLOR | MIN | TYP | MAX | UNITS | TEST COND. |
| LUMINOUS INTENSITY | YELLOW/GREEN | 2.5 | | | mcd | I _f = 20 mA |
| | RED/GREEN | 2.5 | | | | I _f = 10 mA |
| FORWARD VOLTAGE | YELLOW/GREEN | | 2.1 | 2.8 | V | I _f = 20 mA |
| | RED/GREEN | | 2.0 | 2.6 | | |
| PEAK WAVELENGTH | YELLOW/GREEN | | 585/565 | | nm | MEASURED AT PEAK |
| | RED/GREEN | | 635/565 | | | |
| VIEWING ANGLE | YELLOW/GREEN | | 50 | | Degree | |
| | RED/GREEN | | 80 | | | |

| 10 mA NON-DIFFUSED LED OPERATING CHARACTERISTICS AT 25°C AMBIENT (FOR 553-22XX-400) | | | | | | |
|---|--------------|-----|-----|-----|--------|------------------------|
| CHARACTERISTICS | L.E.D. COLOR | MIN | TYP | MAX | UNITS | TEST COND. |
| LUMINOUS INTENSITY | RED | 8.7 | 29 | | mcd | I _f = 10 mA |
| | YELLOW | 10 | | 50 | | |
| | GREEN | 32 | | 50 | | |
| FORWARD VOLTAGE | RED | | 2.0 | 2.8 | V | I _f = 10 mA |
| | YELLOW | | 2.1 | 2.8 | | |
| | GREEN | | 2.1 | 2.8 | | |
| REVERSE VOLTAGE | ALL | 5 | | | V | I _R = 100µA |
| PEAK WAVELENGTH | RED | | 635 | | nm | MEASURED AT PEAK |
| | YELLOW | | 585 | | | |
| | GREEN | | 565 | | | |
| VIEWING ANGLE | ALL | | 45 | | Degree | |

| 2 mA LOW CURRENT LED. OPERATING CHARACTERISTICS AT 25°C AMBIENT (FOR 553-02XX-400) | | | | | | |
|--|--------------|-----|-----|-----|--------|------------------------|
| CHARACTERISTICS | L.E.D. COLOR | MIN | TYP | MAX | UNITS | TEST COND. |
| LUMINOUS INTENSITY | RED | 1.0 | 1.8 | | mcd | I _f = 2 mA |
| | YELLOW | 1.0 | 1.6 | | | |
| | GREEN | 1.0 | 1.6 | | | |
| FORWARD VOLTAGE | RED | | 1.8 | 2.2 | V | I _f = 2 mA |
| | YELLOW | | 1.9 | 2.7 | | |
| | GREEN | | 1.8 | 2.2 | | |
| REVERSE VOLTAGE | ALL | 5 | | | V | I _R = 50 µA |
| PEAK WAVELENGTH | RED | | 635 | | nm | MEASURED AT PEAK |
| | YELLOW | | 583 | | | |
| | GREEN | | 565 | | | |
| VIEWING ANGLE | ALL | | 50 | | Degree | |

| HIGH EFFICIENCY DIFFUSED LED. OPERATING CHARACTERISTICS AT 25°C AMBIENT (FOR 553-01XX-400) | | | | | | |
|--|-------------------|-----|------|-----|--------|------------------------|
| CHARACTERISTICS | L.E.D. COLOR | MIN | TYP | MAX | UNITS | TEST COND. |
| LUMINOUS INTENSITY | RED | 7.4 | 10.0 | | mcd | I _f = 10 mA |
| | GREEN | 4.7 | 12.6 | | | |
| | YELLOW | 7.4 | 10.0 | | | |
| | ORANGE | 3.4 | 7.0 | | | |
| FORWARD VOLTAGE | RED | | 2.0 | 2.8 | V | I _f = 20 mA |
| | GREEN | | 2.1 | 2.8 | | |
| | YELLOW | | 2.1 | 2.8 | | |
| | ORANGE | 1.5 | 2.2 | 3.0 | | |
| REVERSE CURRENT | ALL (EXCEPT BLUE) | | | 100 | µA | V _R = 5 V |
| PEAK WAVELENGTH | RED | | 635 | | nm | MEASURED AT PEAK |
| | GREEN | | 565 | | | |
| | YELLOW | | 585 | | | |
| | ORANGE | | 428 | | | |
| | BLUE | | 3.4 | | | |
| VIEWING ANGLE | ALL OTHERS | | 60 | | Degree | |
| | BLUE | | 70 | | | |

| REV. | ECN NO. | REVISIONS | DRN. | CKD. | APP. | DATE |
|------|---------|--|------|------|------|----------|
| A | ----- | NEW RELEASE | TC | --- | N.O. | 11-16-97 |
| B | ----- | ADDED 553-0111-400 THRU 553-0177-400, 553-0311-400 THRU 553-0333-400, 553-0711-400, 553-0744-400, 553-2211-400, 553-2222-400, 553-2233-400 & CORRESPONDING LED SPECS FOR THESE ASSEMBLIES. | DC | --- | N.O. | 4-3-98 |
| C | ----- | REVISED HIGH EFFICIENCY RED, GREEN & YELLOW LED SPECS.; ADDED NOTE 1. | TC | DC | N.O. | 6-24-99 |
| D | ----- | ADDED P/N 553-0188-400, NOTE 2, ATTENTION NOTE AND PIN NUMBERS ON BOTTOM VIEW. | TC | DC | N.O. | 10-18-99 |
| E | ----- | ADDED 553-0117-400 ADDED 553-0102-400 | AV | DC | N.O. | 2-14-00 |
| F | ----- | REVISED 5V, 10 mA NON-DIFF. RED, GRN & YELLOW LED SPECS. | TC | D.C. | N.O. | 9-18-00 |
| G | ----- | ADDED 553-0112-400 | YIS | DC | N.O. | 11-6-01 |
| H | ----- | ADDED 553-0132-400 AND 553-0172-400 | JAV | JMC | Y.C. | 11-5-03 |
| J | ----- | ADDED 553-0121-400 | JMC | | | |

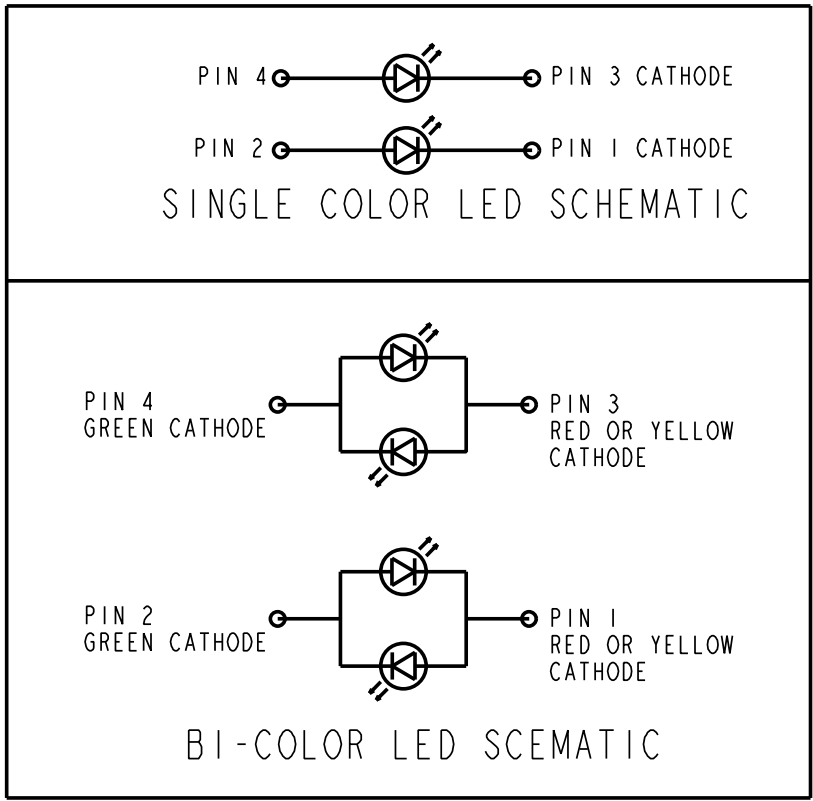


NOTE:
1. DIALIGHT PART NUMBER: 553-XXXX-400.
2. PIN NUMBERS FOR REFERENCE ONLY, DESIGNATION NON-EXISTENT ON PART.

*ATTENTION: THIS ASSEMBLY CONTAINS ELECTROSTATIC SENSITIVE DEVICES (ESDS). MAINTAIN ALL PRECAUTIONARY MEASURES DURING ASSEMBLY, HANDLING AND STORAGE IAW IPC-A-610.



ATTENTION:
OBSERVE PRECAUTIONS FOR
HANDLING ELECTROSTATIC
SENSITIVE DEVICES



| | | |
|---|--------------------|----------------|
| THIS DRAWING AND THE CONTENTS HEREIN ARE CONFIDENTIAL AND THE SOLE PROPERTY OF DIALIGHT. REPRODUCTION OF THIS DRAWING OR CONSTRUCTION OF ANY PARTS WITHIN THIS DRAWING ARE FORBIDDEN WITHOUT THE WRITTEN CONSENT OF DIALIGHT. | | |
| SCALE: 8:1 | DRAWING NUMBER | REV |
| ALL DIM'S IN: INCHES (MM) | C-16311 | J |
| TOLERANCES: UNLESS OTHERWISE SPECIFIED | TITLE | |
| FRACTIONS: ±1/64 | DIN 41494 BI-LEVEL | |
| DECIMALS (.XX): ±.02 | MATERIAL | |
| DECIMALS (.XXX): ±.015 | | |
| DECIMALS (.XXXX): ±.0005 | | |
| ANGLES: ±1° | | |
| FINISH: | | |
| FSCM 83330 | SHEET 1 OF 1 | FAMILY TABLES: |

Mouser Electronics

Authorized Distributor

Click to View Pricing, Inventory, Delivery & Lifecycle Information:

Dialight:

[553-0111-400F](#) [553-0202-400F](#) [553-0122-400F](#) [553-0132-400F](#) [553-0102-400F](#) [553-0112-400F](#)