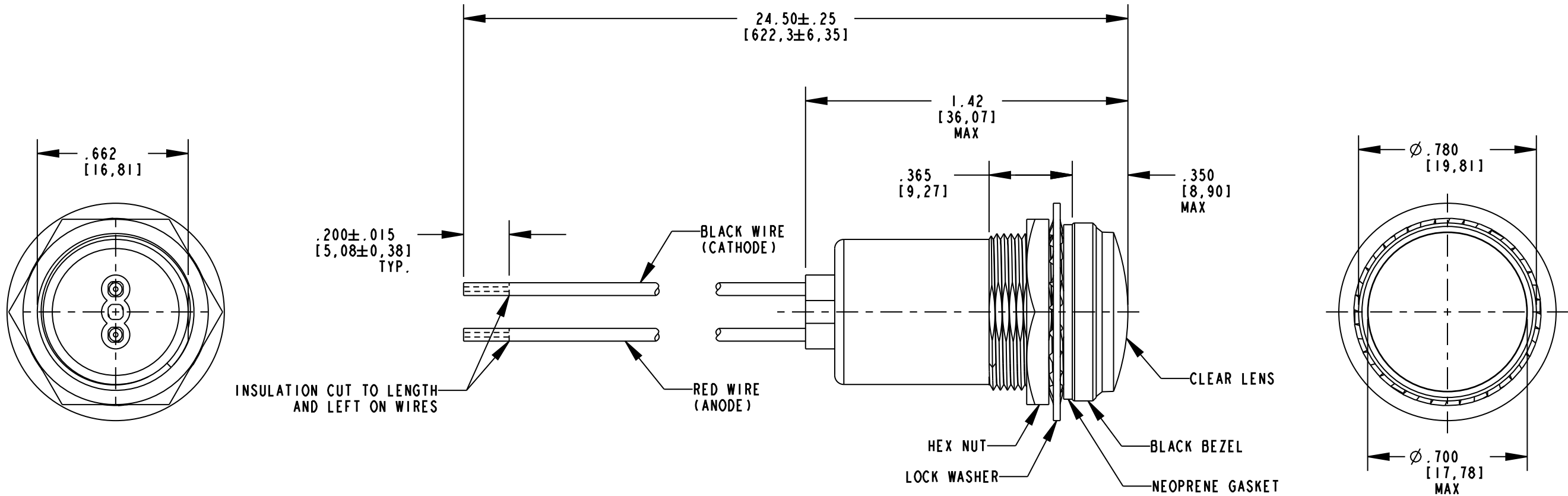


| DIALIGHT PART NUMBER | COLOR | VOLTAGE (VDC) | CURRENT (mA) MAX |
|-------------------------|-------|------------------|---------------------|
| 557-1002-804F | WHITE | 5 | 25 |

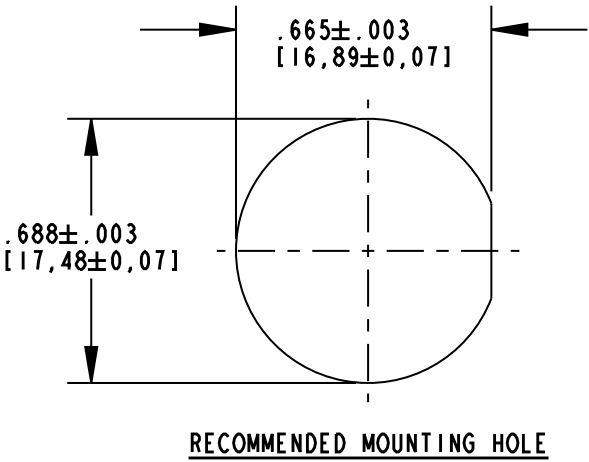
RoHS COMPLIANT 557-1002-804F
Part Numbers with the "F" suffix ending are RoHS Compliant.
Packaging is marked with "RoHS Compliant" label or equivalent markings.

| REV | ECN NO | REVISIONS | DRN | CKD | APP | DATE |
|-----|--------|--|-----|-----|-----|---------|
| A | — | NEW RELEASE | AJF | KLJ | CJC | 8-16-10 |
| B | — | 1.42 MAX WAS "1.53 MAX"; ADDED 24.25±.25 DIM. | AJF | ALV | CJC | 8-17-10 |
| C | — | 24.50±.25 WAS "24.25±.25"; STRIPPED LENGTH WAS ".500±.015" & INSULATION WAS REMOVED. | AJF | KLJ | CJC | 9-24-10 |



NOTES:

- HOUSING MATERIAL: WHITE POLYCARBONATE (UL 94 V-0 RATING).
- LENS MATERIAL: CLEAR POLYCARBONATE (UL 94 V-0 RATING).
- WIRE: 24 AWG TYPE C MIL-W-16878D, UL STYLE 1569 RATED 105°C 300V; CSA TR-64 RATED 90°C 300V; PVC INSULATION.
- WATERTIGHT SEAL FROM FRONT OF PANEL MEETS MIL-L-3661 B. MAXIMUM MOUNTING TORQUE: 15 in-lbs.
- MAXIMUM PANEL THICKNESS: .156 [3,96].
- DIALIGHT PART NUMBER: 557-1002-804F.
- OPERATING TEMPERATURE: -30°C TO +80°C.
- STORAGE TEMPERATURE: -40°C TO +85°C.



| | | |
|---|--|----------------------------|
| THIS DRAWING AND THE CONTENTS HEREIN ARE CONFIDENTIAL AND THE SOLE PROPERTY OF DIALIGHT. REPRODUCTION OF THIS DRAWING OR CONSTRUCTION OF ANY PARTS WITHIN THIS DRAWING ARE FORBIDDEN WITHOUT THE WRITTEN CONSENT OF DIALIGHT. | | |
| SCALE: 2.000 | DRAWING NUMBER | REV |
| ALL DIM'S IN: INCHES (MM) | C-17859 | C |
| TOLERANCES: UNLESS OTHERWISE SPECIFIED | TITLE | |
| FRACTIONS: $\pm 1/64$ | LED PMI, 5V, WHITE | |
| DECIMALS (.XX): $\pm .02$ | MATERIAL | |
| DECIMALS (.XXX): $\pm .015$ | - | |
| ANGLES: $\pm 1^\circ$ | Dialight | |
| FINISH: | 1501 ROUTE 34 SOUTH FARMINGDALE, NJ 07727 | |
| FSCM | 83330 | SHEET 1 OF 1 FAMILY TABLE: |

Mouser Electronics

Authorized Distributor

Click to View Pricing, Inventory, Delivery & Lifecycle Information:

[Dialight:](#)

[557-1002-804F](#)