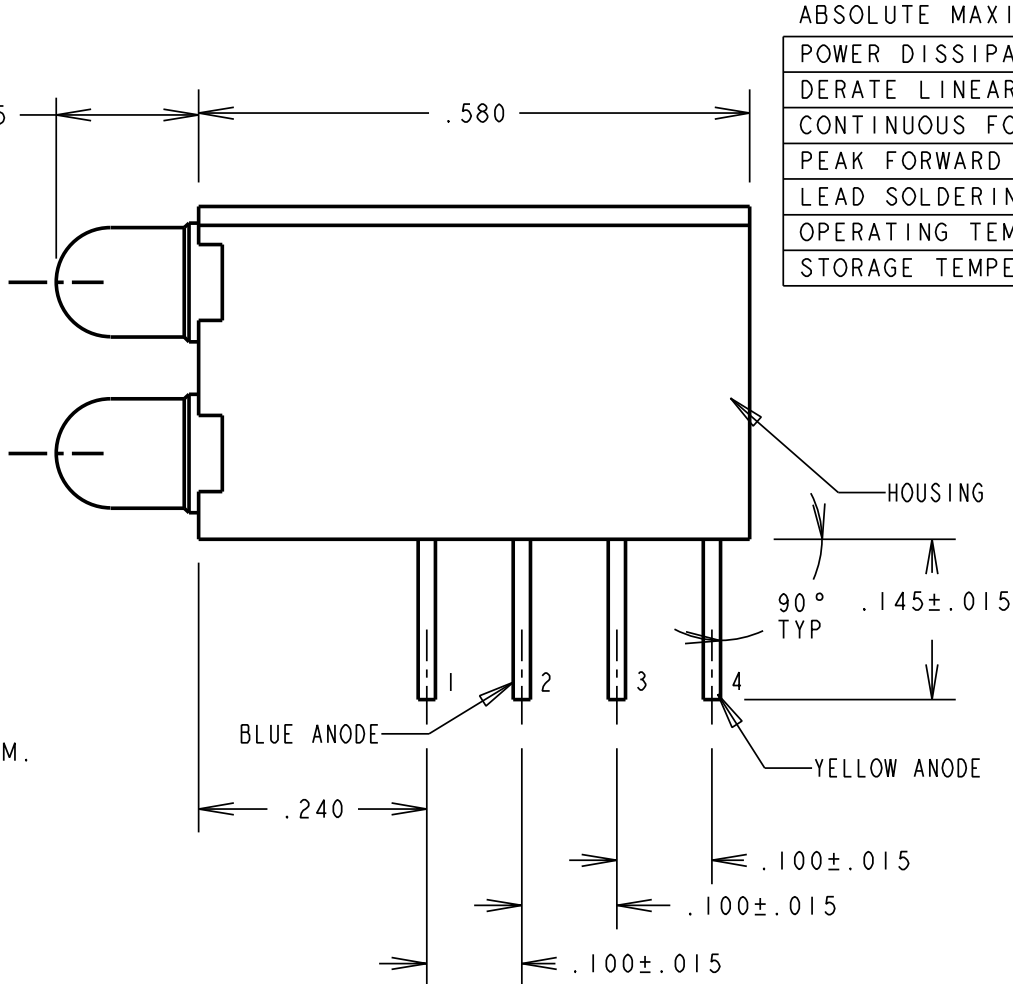
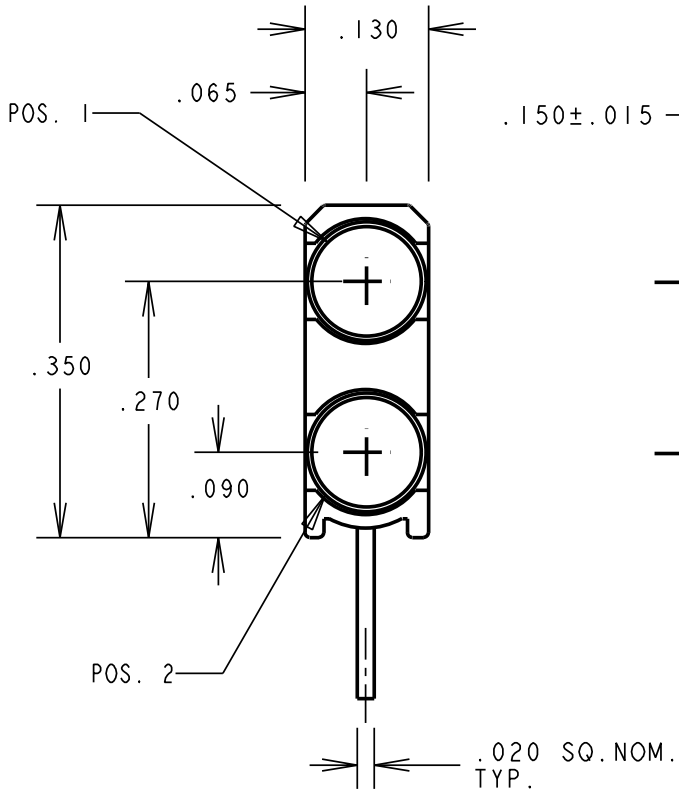


PART NUMBER	LED COLOR	
	POSITION 1	POSITION 2
569-0714-804F	YELLOW/GREEN	BLUE

OPERATING CHARACTERISTICS AT 25°C AMBIENT

LED CHARACTERISTICS	COLOR	MIN.	TYP.	MAX.	UNITS	TEST CONDITIONS
LUMINOUS INTENSITY	GREEN	2.5	6.3		mcd	If = 10 ma
	YELLOW	2.5	4.3			
	BLUE	7.1	12.5	18.0		
FORWARD VOLTAGE	GREEN		2.1	2.8	V	If = 10 ma
	YELLOW		2.1	2.8		
	BLUE		3.5	4.1		
PEAK WAVELENGTH (λ d)	GREEN		565		nm	
	YELLOW		585			
	BLUE		428			
DOMINANT WAVELENGTH (λ d)	GREEN		569		nm	Y/G MEASURED ON EXELTRON 2001
	YELLOW (Y3)	585		589		
	YELLOW (Y2)	583		587		
	BLUE	462	465	468		
VIEWING ANGLE (2 Ø 1/2)	GREEN		80		DEGREES	
	YELLOW		80			
	BLUE		70			

REV.	ECN NO.	REVISIONS	DRN.	CKD.	APP.	DATE
A	—	NEW RELEASE	TWC			



ABSOLUTE MAXIMUM RATINGS AT 25 ° C AMBIENT

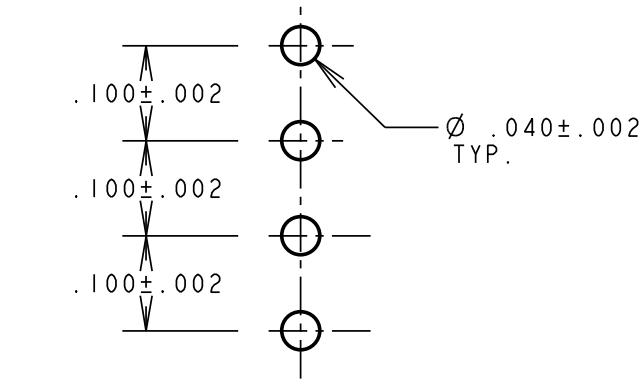
	GREEN	YELLOW	BLUE	UNITS
POWER DISSIPATION	100	60	90	mW
DERATE LINEARLY FROM 50 ° C	0.4	0.25	0.44	mA/ °C
CONTINUOUS FORWARD CURRENT	30	20	20	mA
PEAK FORWARD CURRENT (1/10 DUTY CYCLE, 0.1 ms PULSE WIDTH)	120	80		mA
LEAD SOLDERING TEMPERATURE, 5 SEC., 1/16" FROM BODY	260			°C
OPERATING TEMPERATURE	-55 TO +100			°C
STORAGE TEMPERATURE	-55 TO +100			°C

NOTE:

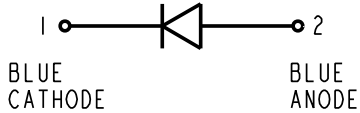
- LED LEAD SPACING MEASURED AT HOUSING EXIT.
- PIN NUMBERS FOR REFERENCE ONLY, DESIGNATION NON-EXISTENT ON PARTS.
- DIALIGHT PART NUMBER: 569-0714-804F.
- THIS ASSEMBLY CONTAINS ELECTROSTATIC DISCHARGE SENSITIVE DEVICES (ESDS). MAINTAIN ALL PRECAUTIONARY MEASURES DURING ASSEMBLY, HANDLING AND STORAGE IN ACCORDANCE WITH IPC-A-610.
- THIS PRODUCT IS Pb FREE. IT IS IN COMPLIANCE WITH THE EUROPEAN UNION'S RoHS DIRECTIVE. EACH BAG AND REEL IS MARKED WITH THE RoHS COMPLIANT LABEL P/N 9100-117-0852-99 OR EQUIVALENT



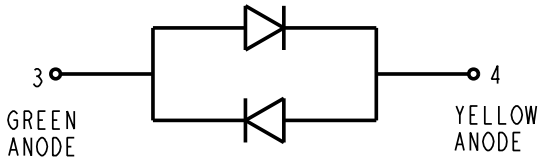
ATTENTION:
OBSERVE PRECAUTIONS FOR
HANDLING ELECTROSTATIC
SENSITIVE DEVICES



RECOMMENDED P.C. BOARD HOLE PATTERN



BLUE LED
SCHEMATIC



Y/G BI-COLOR
SCHEMATIC

THIS DRAWING AND THE CONTENTS HEREIN ARE CONFIDENTIAL AND THE SOLE PROPERTY OF DIALIGHT. REPRODUCTION OF THIS DRAWING OR CONSTRUCTION OF ANY PARTS WITHIN THIS DRAWING ARE FORBIDDEN WITHOUT THE WRITTEN CONSENT OF DIALIGHT.

SCALE: DRAWING SCALE ALL DIM'S IN: INCHES (MM)	DRAWING NUMBER C-17249	REV A
TOLERANCES: UNLESS OTHERWISE SPECIFIED FRACTIONS: ±1/64 DECIMALS (.XX): ±.01 DECIMALS (.XXX): ±.005 DECIMALS (.XXXX): ±.0005 ANGLES: ±1°	TITLE 3mm HI-DENSITY BI-LEVEL CBI Y/G BLUE	MATERIAL
FINISH:	Dialight	1501 ROUTE 34 SOUTH FARMINGDALE, NJ 07727
FSCM 83330	SHEET 1 OF 1	FAMILY TABLE:

Mouser Electronics

Authorized Distributor

Click to View Pricing, Inventory, Delivery & Lifecycle Information:

Dialight:

569-0714-804F