

LOG•IC® Temperature Recorders

Every link in the cold chain is crucial to your product's safety and quality. Temperature monitoring provides a complete record of your product's journey. Armed with this information, you can make critical decisions regarding the product's efficacy.



LOG•IC® Temperature Recorders

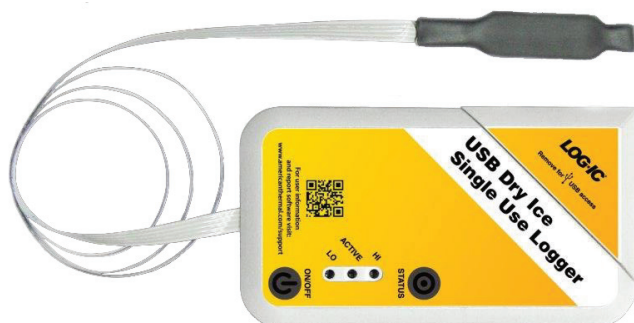
Refrigeration equipment is not always reliable. Multiple handlers may come in contact with the package during its journey. Unexpected delays and neglect at any stage of production or distribution can cause exposure to unacceptable temperatures. These types of risks may occur in storage before the product leaves a facility, in transit or after it arrives at its destination. How can you be sure that a cold chain breach has not compromised your product's quality?

LOG•IC is a cost-effective temperature recorder that indicates if your product has been exposed to temperatures that could negatively affect product quality or safety. While many other temperature recorders limit you to one download before stopping the recording process, LOG•IC allows you to scan and view tag data repeatedly, allowing you to take measurements at any point in the cold chain.

LOG•IC can be tailored for specific applications such as monitoring product core temperatures with a stainless steel probe, inside validated packaging with a ribbon cable, or extreme cold with a dry ice solution.

Features

- Captures data every 60 seconds
- Up to eight temperature alarm thresholds
- Validated and FDA 21 CFR Part 11-compliant reports
- 255 uses, 26 uses or single use models
- Available with Stainless and Ribbon Probes
- Software tools for analysis and reporting



Dry Ice Single Use
w/ Ribbon Probe



LOG•IC
Single-Use

LOG•IC
Multi-Use

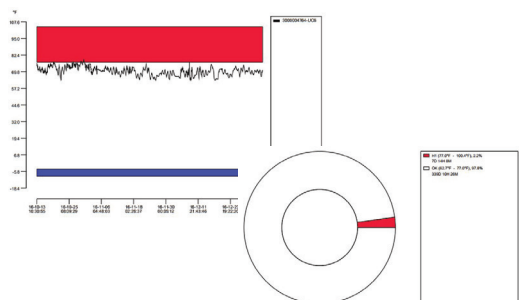
LOG•IC
255 Use

Temperature Recorders

Key Specifications

	Standard	with Probe	Dry Ice Probe
Temperature Measurement Range		-30°C to 75°C -22°F to 167°F	-80°C to 75°C -112°F to 167°F
Temperature Accuracy:			
-80°C to -30°C	N/A	N/A	± 3°C
-30°C to 2°C	± 0.5°C	± 1°C	± 1°C
2°C to 8°C	± 0.5°C	± 0.5°C	± 1°C
8°C to 75°C	± 0.5°C	± 1°C	± 1°C
-112°F to -22°F	N/A	N/A	± 6°F
22°F to 36°F	± 1°F	± 2°F	± 2°F
36°F to 46°F	± 1°F	± 1°F	± 2°F
46°F to 167°F	± 1°F	± 2°F	± 2°F
Threshold Settings	8 configurable excursions thresholds		
Memory Capacity	4000 logged data points / 16 million histogram temperature readings		
Data Retrieval	USB plus RF		
Wireless Technology	Semi-passive RFID		
Packaging	NEMA 4 / IP 66		
Product Size	3.5in x 1.75in x 0.25in 9cm x 5cm x 0.82cm		2.28in x 2.28in x 0.07in 5.79cm x 5.79cm x 0.17cm
Cable Length	N/A	24in 60.96cm	24in 60.96cm
Battery Life	Up to 3 years		
Calibration	Factory-calibrated sensor, NIST-traceable (3-point)		
Weight		29g	19.50g

Product Description	Part Number
Single-Use Temperature Recorder	L-3100
Multi-Use Temperature Recorder (26 uses)	L-3200
Multi-Use Temperature Recorder / Stainless Steel Probe (26 uses)	L-3210
Multi-Use Temperature Recorder / Ribbon Probe (26 uses)	L-3230
Multi-Use Temperature Recorder (255 Uses)	L-3300
Single-Use Dry Ice Temperature Recorder / Ribbon Probe	L-3133



Mouser Electronics

Authorized Distributor

Click to View Pricing, Inventory, Delivery & Lifecycle Information:

[SpotSee:](#)

[L-3100](#) [L-3133](#) [L-3200](#) [L-3210](#) [L-3230](#) [L-3300](#)