

New and improved  
multi-voltage  
FumeCube with  
almost 20% better  
airflow!



Multi-Voltage FumeCube

Purex has upgraded one of their bestselling products and made it even better! FumeCube is now multi-voltage and can adapt to any voltage requirement. Perfect for bench soldering and other similar applications.

Recirculating fume extraction is now extremely important with the rising concern for our environment and employee safety.

Purex Fume Extractors provide not only a flexible and portable process for plant designs and expansions, but also a more stable process by providing a controlled airflow to remove harmful fumes. All this while eliminating the added costs of building modifications, increased air handling systems and lost energy.

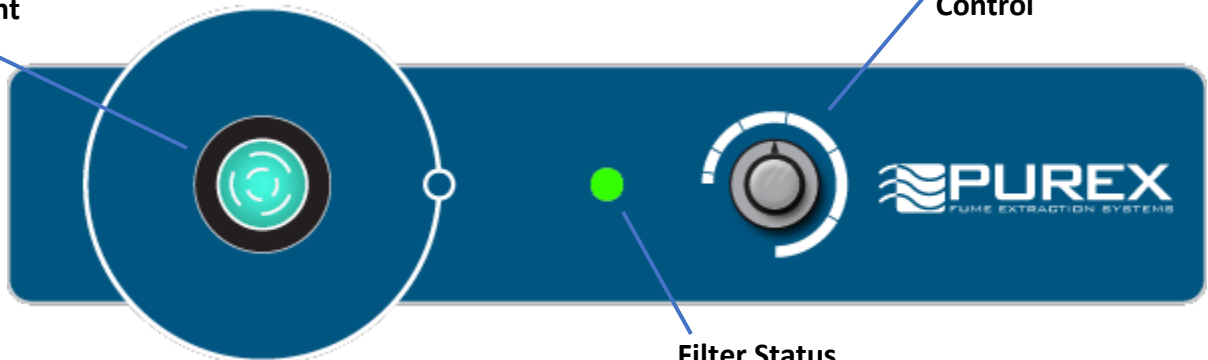
## Purex Systems

- ❖ Automatic Flow Control maintains constant extraction rate
- ❖ Adjustable Air Flow extends filter life
- ❖ Blocked Filter Warning
- ❖ Easy to change filters
- ❖ Quiet operation
- ❖ Low Energy consumption
- ❖ HEPA filtration removes 99.997% of particles down to .3 microns
- ❖ Remote Machine Interface
- ❖ Welded stainless steel construction
- ❖ Continuous run brushless motors
- ❖ Multi-voltage, use anywhere in the world

# FumeCube

Power Switch w/  
Indicator Light

Variable Speed  
Control



Filter Status  
Indicator

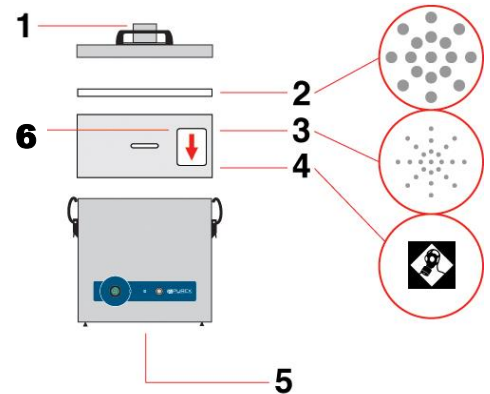
## Main Filter Options



HEPA/Chemical  
Chemical  
HEPA Chemical Cleanroom\*  
Solvent Lock

110536EB<sup>Δ</sup>  
110537EB  
110538EB  
110543EB

\*Use F8/F9 Pre-filter



- 1) Dual Air inlet
- 2) Pre-filter
- 3) Main filter (HEPA Location)
- 4) Main filter (Carbon Location)
- 5) Clean air return
- 6) Filter I.D. label

## Pre-Filter



F5 (4pk)  
F6 (4pk)  
F8/F9 (4pk)

200225EB<sup>Δ</sup>  
200226EB  
200316EB

<sup>Δ</sup>Standard Filter Supplied

	FumeCube	
	Single Port	Dual Port
Model	072155EB	072160EB
Voltage (50hz/60Hz)*	100-230 Volt Single Phase	
Wattage	.14Kw	
Airflow	135 cfm (225 m³/Hr)	
Vacuum	13 inwg (3.2 kPa)	
Air Inlet Ports	57mm I.D./62mm O.D.	
-Sound Rating	60 dBA	
Dimensions (L/W/H)	12.15in x 12in x 14.5in	
Weight	37.5 lbs	

## 100295EB Standard 38mm Stainless Arm Kit Including:

1- 51mm x 2m flexible hose w/ connecting cuffs

1-Clamped Bracket

1-SS Flexible arm and valve

1-SS slim nozzle

1-SS conical cowl

1-Plug for 2<sup>nd</sup> air inlet



# Mouser Electronics

Authorized Distributor

Click to View Pricing, Inventory, Delivery & Lifecycle Information:

Desco:

[072155-230-1EB](#) [072160-120-2EB](#) [072160-230-2EB](#) [072155-120-1EB](#)