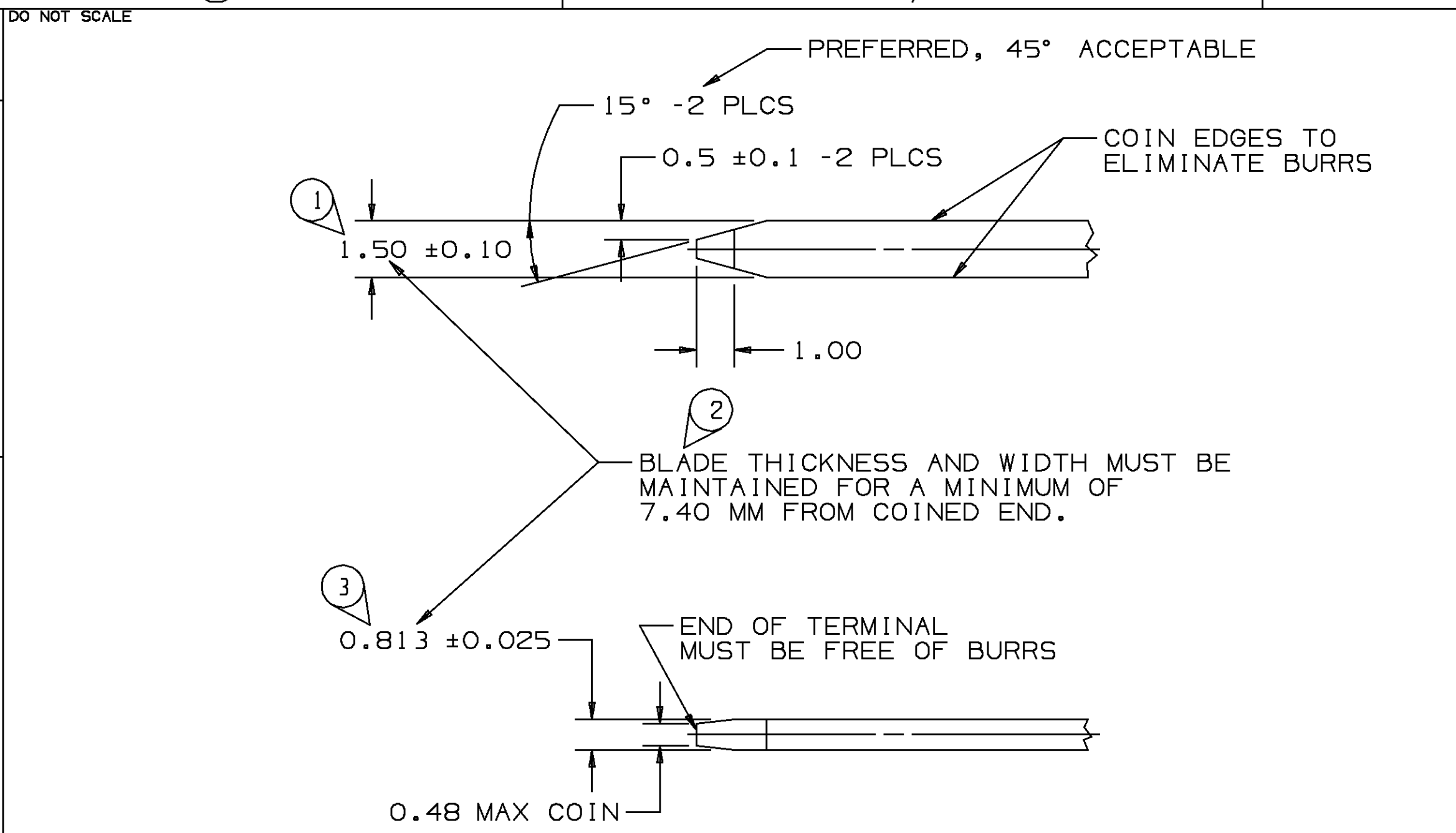


DELPHI PACKARD ELECTRIC SYSTEMS
WARREN, OHIO 44090

8
7
6
5
4
3
2
1
H
G
F
E
D
C
B
A

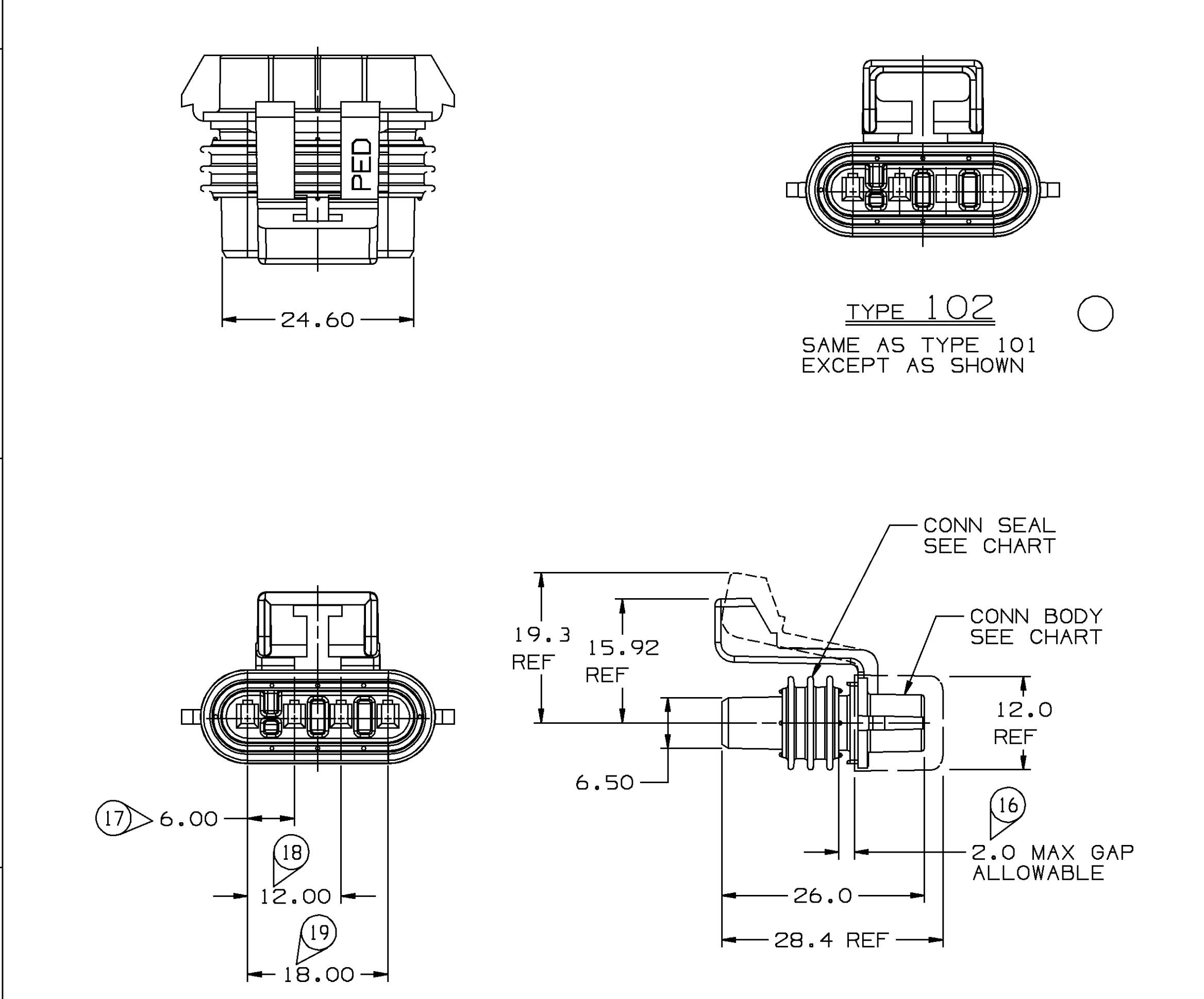
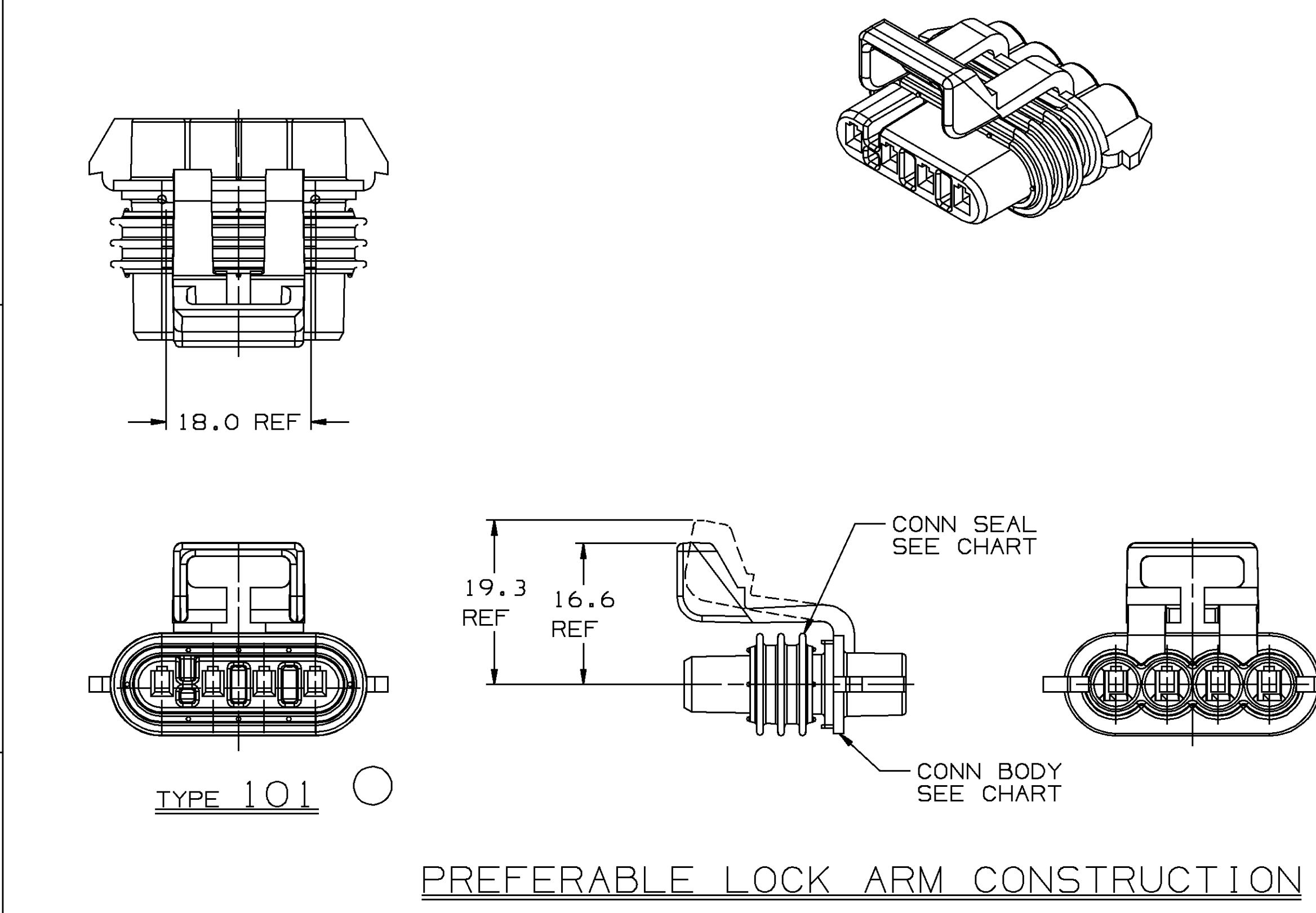


MATERIAL SPECIFICATIONS

RECOMMENDED
BASE METAL - CDA-210, GILDING EXTRA SPRING TEMPER
PLATING - 0.0050±0.0025 MM THICK TIN

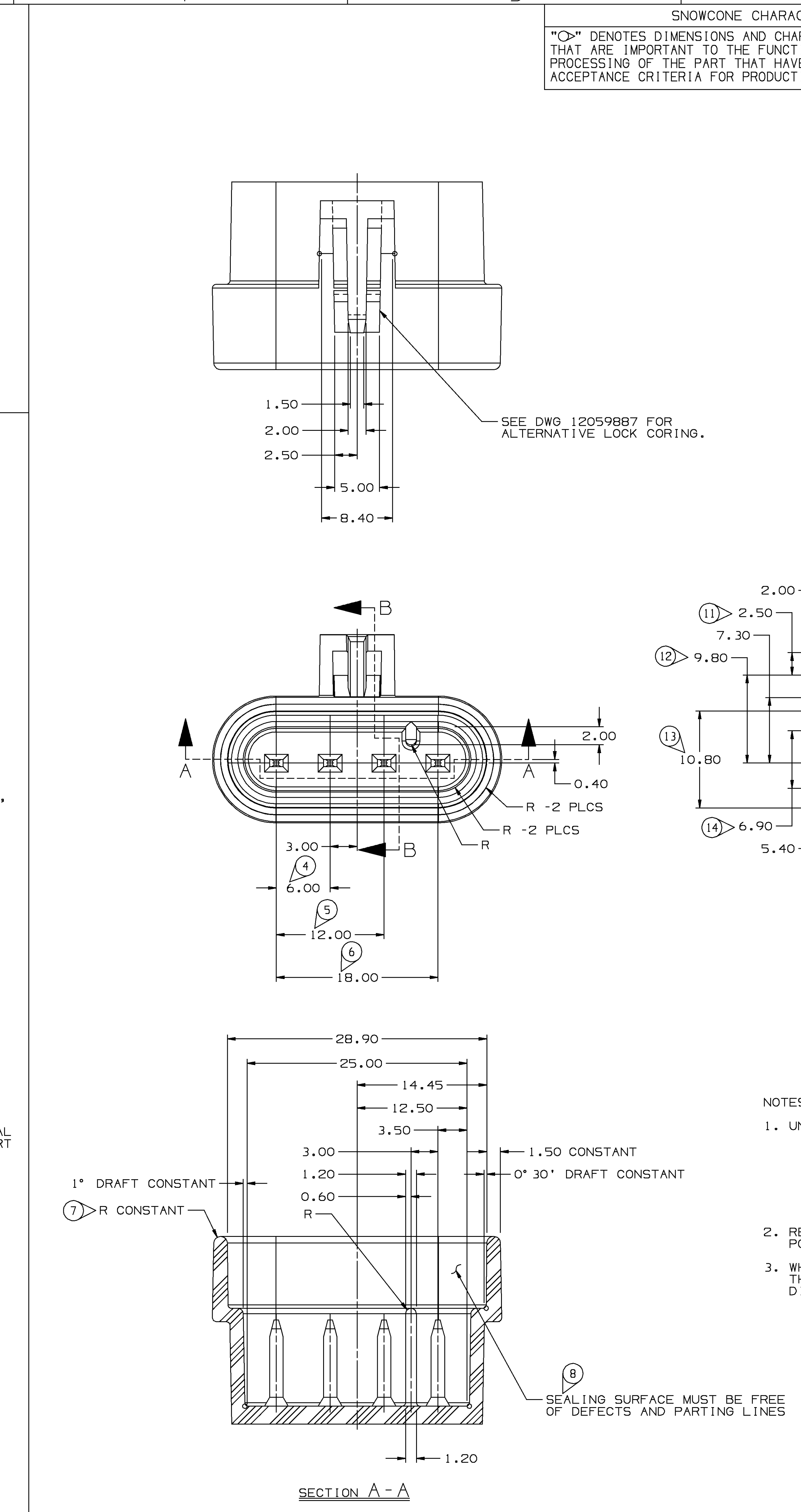
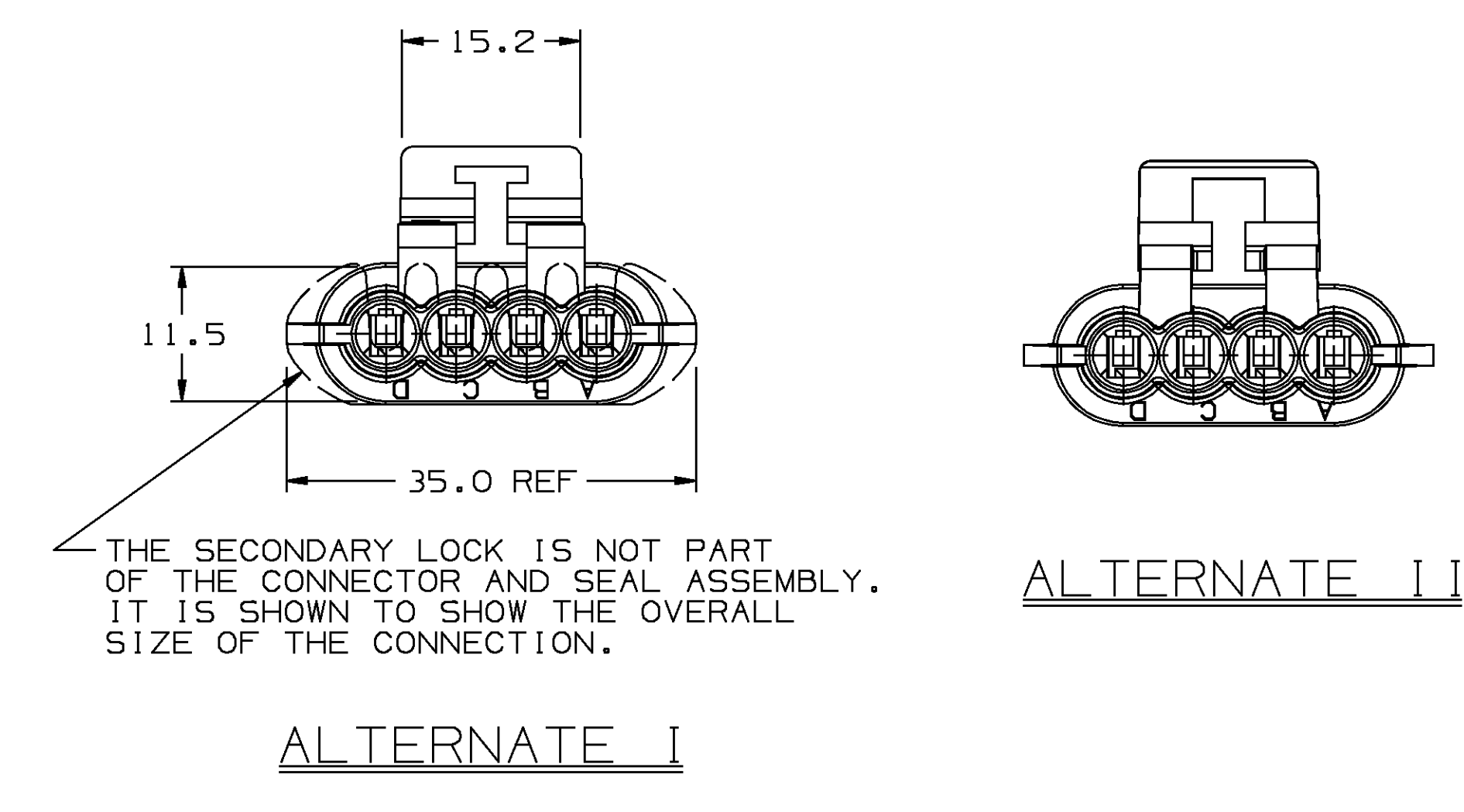
MINIMUMS
ELECTRICAL CONDUCTIVITY - ≥20% IACS AT 20°C. USE OF A MATERIAL WITH CONDUCTIVITY <20% IACS MUST BE APPROVED BY PACKARD ELECTRIC MATERIALS ENGINEERING.
TENSILE STRENGTH - 407 MPa
PLATING - FOR LOW ENERGY (≤5v) AND NON-PASSENGER COMPARTMENT POWER CIRCUITS, 0.0050±0.0025 MM THICK TIN. FOR MATERIALS CONTAINING 10% OR MORE ZINC, AN UNDERPLATE OF COPPER 0.0050±0.0025 MM THICK IS REQUIRED.

MATING BLADE INFORMATION
SCALE 8:1



NOTES:

- UNLESS OTHERWISE SPECIFIED AND/OR INDICATED: DIMENSIONS ARE TO FACE OF VIEW SHOWN AND AUTOMATICALLY ROUNDED BY COMPUTER FOR INSPECTION. (SEE MATH MODEL FOR PRECISE DIMENSION) FOR ALL OTHER DIMENSIONS NOT SHOWN BUT REQUIRED FOR TOOL BUILD, SEE MATH MODEL FOR PRECISE TOOL PATH DATA.
- MATING COMPONENTS:
CONNECTOR USE 12162102 OR EQUIVALENT
TERMINALS -
CAVITIES USE 12048074 TERMINAL OR EQUIVALENT
ASSEMBLY USE 12048086 CABLE SEAL OR EQUIVALENT
ASSEMBLY USE 12047948 SECONDARY LOCK OR EQUIVALENT
ASSEMBLY USE 12020833 CONNECTOR POSITION ASSURANCE OR EQUIVALENT
- WHEN PARTS ARE SHIPPED, THEY MUST BE PACKED IN PLASTIC BAGS OR SHIPPING CONTAINERS MUST BE LINED WITH PLASTIC LINERS. BAGS OR LINERS MUST BE SEALED TO AVOID ENTRY OF FOREIGN MATTER.
- SEALING CODE 3
DESIGN WILL PASS SALT FOG AND IMMERSION TEST AFTER CONDITIONING AS SPECIFIED IN ESA-644 (WEATHER-PACK), ESA-710 (METRI-PACK), ESA-650 (UNDERHOOD MICRO-PACK), C-4006 (WORLD CONNECTOR), ETC. - WHEN MATED TO MATING PART OR EQUIVALENT
- CONNECTOR ENGAGE FORCE CODE
- FOR PART NUMBERS WITH ADHESIVE, USE PM003510 OR ADHESIVE APPROVED BY MATERIALS ENGINEER TO GLUE CONNECTOR SEAL TO CONNECTOR.



SNOWCONE CHARACTERISTICS									
DATE	SYM	REVISION RECORD			AUTH	DR	CK	TOTAL ON DRAWING	
02FE94		12059870 - ADDED TO TAXI						19	
		FROM SEPARATE DWG - REV.							
		REMAINS AT "A"			157861	J5	J5		
02FE94		12162144 - RELEASED TO							
		REV. "A"			940005	J5	J5		
02FE94		12059870 - OBSOLETE			940003	J5	J5		
12MY94		CREATED SHEET 2			160647	RRS	SMF		
12OC94		ALL PARTS-ADDED ALT.							
		LOCK ARM CONSTRUCTION:							
		NO REV UPDATE REQ'D			163093	J05	DLB		
29JUN95		ADDED NOTE #6			167523	MR	MAV		
31JUL96		12186694 - RELEASED TO							
		REV "A" - REVISED NOTE							
		#6			960005	RR	PPQ		
16JA97		12186953 - RELEASED TO							
		REV "A" - REVISED NOTE 1			970005	EM	JVS		
21JA98		15324263 - RELEASED TO							
		REV "A"			980005	AM	JTB		
15DE98		ALL PARTS - ADDED TYPE							
		LABELS - OBSOLETE PARTS							
		REMAINS OBSOLETE - NO							
		REV UPDATE REQ'D			188808	BM	CMC		

MATING CONNECTOR INFORMATION									
SCALE 4:1									
NOTES:									
1. UNLESS OTHERWISE SPECIFIED AND/OR INDICATED: DIMENSIONS ARE TO FACE OF VIEW SHOWN AND AUTOMATICALLY ROUNDED BY COMPUTER FOR INSPECTION. (SEE MATH MODEL FOR PRECISE DIMENSION) FOR ALL OTHER DIMENSIONS NOT SHOWN BUT REQUIRED FOR TOOL BUILD, SEE MATH MODEL FOR PRECISE TOOL PATH DATA. ALL RADII 0.40 DRAFT IS 1° ON ALL OUTSIDE SURFACES									
2. RECOMMENDED MATERIAL - GLASS FILLED NYLON OR POLYESTER.									
3. WHEN USING THIS INFORMATION FOR A NEW DESIGN, REQUEST THE LATEST COPY OF THIS PRINT FROM PACKARD ELECTRIC DIVISION.									
PART NO 1216 2152									

ALTERNATE LOCK ARM CONSTRUCTIONS

ALTERNATE II

PART NO WITH ADHESIVE	REV	STATUS	TYPE	PART NO WITHOUT ADHESIVE	REV	STATUS	CONN BODY	CONN SEAL	REPLACED BY
			103	15324263	A		15324262	12047949	
			102	12186953	A		12186952	12047949	
12186694	A		101	12162144	A		12162143	12047949	
			101	12059870	A	OBSOLETE	12059869	12047949	12162144

DRAWING TYPE		OTHER DRAWINGS AVAILABLE	
DETAIL/CPAD/PID			
Ultraphis II		METRIC	
THIRD ANGLE PROJECTION		DIMENSIONS ARE IN MILLIMETERS UNLESS OTHERWISE SPECIFIED	
CODE NO 6900		TOLERANCE UNLESS SPECIFIED DECIMAL ANGULARS 2°	
DWG DATE 02FE94		ONE PLACE ±0.3	
SCALE 2:1		TWO PLACE ±0.15	
REFERENCE NO		BESTOM NADASKY 02FE94	
MATERIAL SPEC		BRJDE SUD1K 02FE94	
NAME		OKJDE SUD1K 02FE94	
PART NUMBER		APPR K.D. MURPHY 28MR94	
1216 2152		VOL CM 3	
SHEET 1 OF 2		SEE DRAWING	
		TAXI ASM CONN 4F M/P 150	
		SIZE A0	

Mouser Electronics

Authorized Distributor

Click to View Pricing, Inventory, Delivery & Lifecycle Information:

[Aptiv:](#)
[15324263](#)