

# SHIELDPACK™ HV RCS890 SB



ShieldPack™ HV RCS890 SB  
2W 90° with HVIL

## BENEFITS

- Easy to assemble with integrated ErgoMate™ Axial Mating Assist System on harness connector
- Compact package with unique integrated electric interlock
- Header is sealed in both mated and unmated position

## FEATURES

- Bundle shielding with external braid
- Panel mount to device with face seal to module
- Two-stage disconnect for safe unmating



## AVAILABLE CONFIGURATIONS

Connector Type	Wire-to-device
Cable Exit Orientation	90°
Cable Range (mm²)	35 - 50 (power) 0.5 - 0.75 (HVIL)
Terminal Type	8 mm round contact system
# of Power Terminals	2
Shielding	Bundle
HVIL	Shunt on female
Assembly Assurance	CPA
Number of Indexes	1



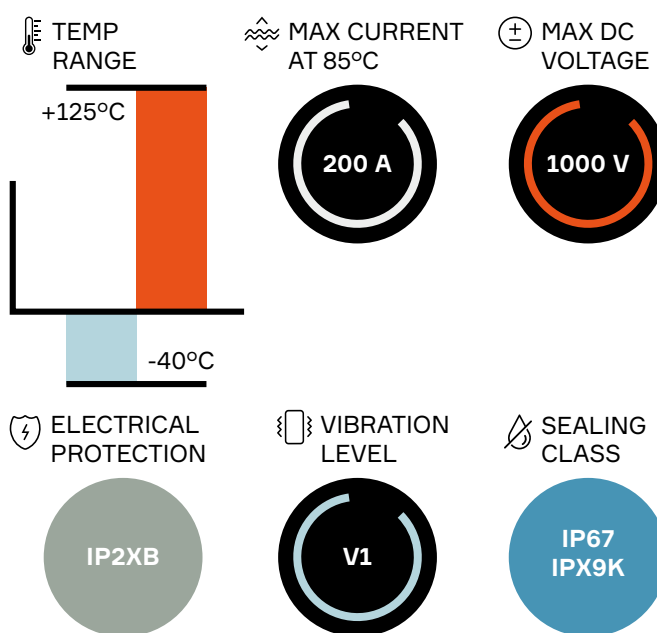
## APPLICATIONS

AC / DC inverter, DC / DC converter, HV battery,  
Power electric box, HV PDU

See back page for representative part numbers and packaging dimensions.



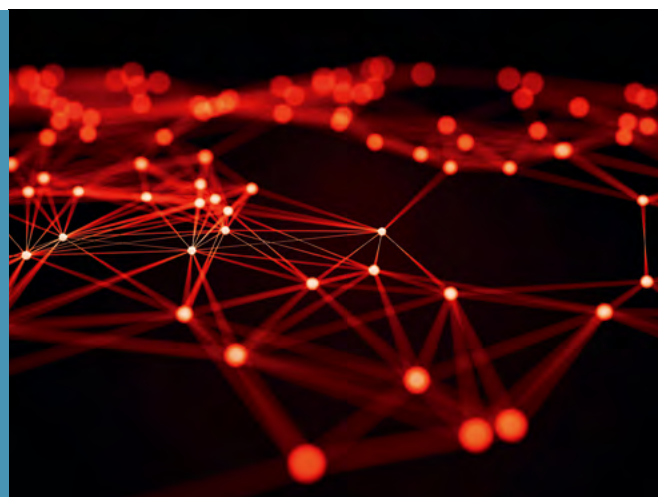
## TECHNICAL CHARACTERISTICS



## About Aptiv

Aptiv is a global technology company that develops safer, greener and more connected solutions enabling the future of mobility.

Visit [aptiv.com](https://aptiv.com)



• APTIV •

Header connector	Mating connector	BOM
33503821	33511750	1

## ASSOCIATED PARTS

Part number	Description	BOM
-------------	-------------	-----

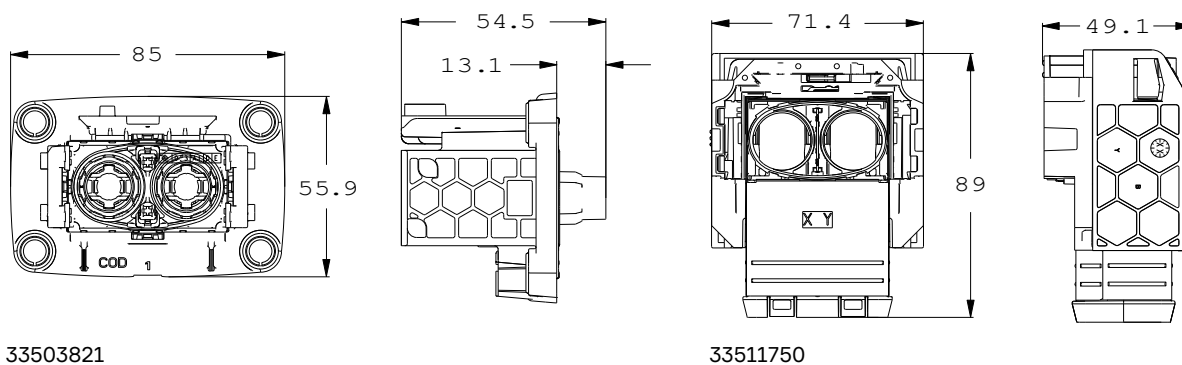
### Header

33512193	RCS 800/890 male pin terminal silver version standard length	2
33511746	RCS 800/890 male pin terminal silver version V1 length	
33511747	RCS 800/890 male pin terminal silver version V2 length	
10811962	DCS2 1.5 female terminal gold-plated 0.5 - 1.0 mm <sup>2</sup>	2
15441379	DCS/DSQ 1.5 red single wire seal 0.22 - 0.5 mm <sup>2</sup>	2
15441380	DCS/DSQ 1.5 grey single wire seal 0.75 - 1.0 mm <sup>2</sup>	

### Mating Connector

33308229	RCS 890 female terminal silver version 16 - 25 mm <sup>2</sup>	2
33502217	RCS 890 female terminal silver version 35 - 50 mm <sup>2</sup>	
35225104	RCS 890 female terminal silver version 70 mm <sup>2</sup>	
33521619	RCS 890 single wire seal & retainer 16-25 mm <sup>2</sup>	2
33511753	RCS 890 single wire seal & retainer 35 - 40 mm <sup>2</sup>	
33511754	RCS 890 single wire seal & retainer 50 mm <sup>2</sup>	
35199856	RCS 890 single wire seal & retainer 70 mm <sup>2</sup>	2
33504038	RCS 890 2-way half clamp	

## DIMENSION MEASUREMENT SAMPLE



Part numbers, specifications, dimensions and performance data in this document are for general references only and are subject to change without notice. To verify product information, please contact an Aptiv representative.

# Mouser Electronics

Authorized Distributor

Click to View Pricing, Inventory, Delivery & Lifecycle Information:

[Aptiv:](#)  
[33504039](#)