

# Component-to-wire connectors **FCI**

## HPCS

### 2/3/4/5/6 way sealed female housings for 2.8 mm terminals

#### Features

- 2 to 6 position housing available
- Waterproof application with single wire seal
- Lateral secondary lock for terminal position assurance (T.P.A.)
- Circumferential interface seal
- Plastic locking feature
- Mechanical polarization
- Several codings available



#### Performance characteristics

- Temperature range: from -40°C to +120°C
- Contact retention force: > 80 N
- Contact insertion force: < 20 N
- Connector mating force: < 100 N

#### Construction

- Housing material: PBT
- Circumferential interface seal: Silicone

#### Tooling

- Terminal removal tool: Consult us
- Mini-applicator: Consult us

#### Connector compatibility

- Usable terminals: HPCS 2.8 mm female terminals

Part Numbers	No. of position	Terminal size	Colour
6 040 40 01	2	2.8 mm	Black
6 040 40 11	2	2.8 mm	Black
6 040 40 21	2	2.8 mm	Black
6 040 41 01	3	2.8 mm	Black
6 040 42 01	4	2.8 mm	Black
6 040 43 21	5	2.8 mm	Black
6 040 43 11	5	2.8 mm	Black
6 040 43 01	5	2.8 mm	Black
6 040 44 01	6	2.8 mm	Black

Component-to-wire connectors

FCi

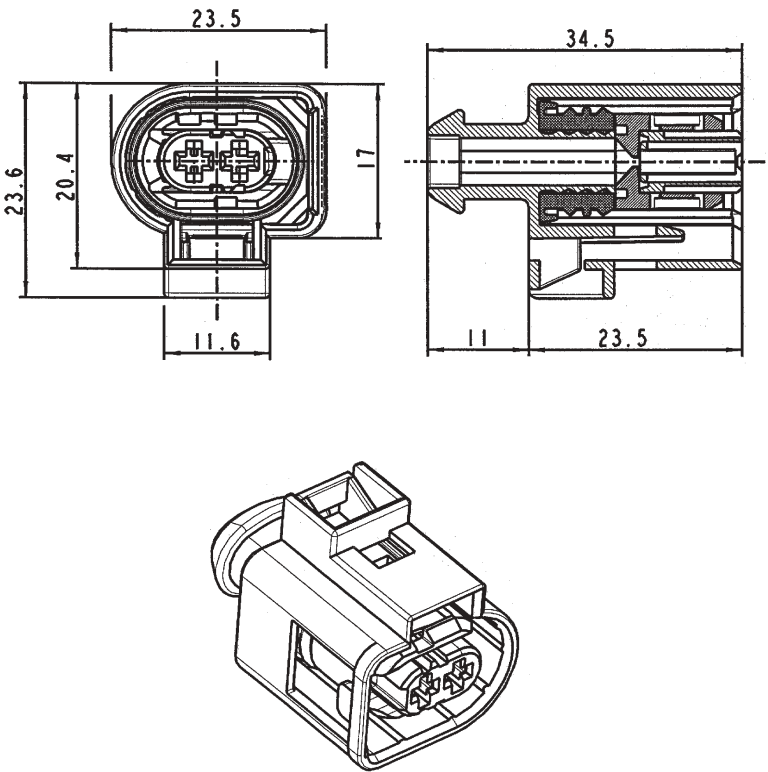
HPCS

2/3/4/5/6 way sealed female housings for 2.8 mm terminals

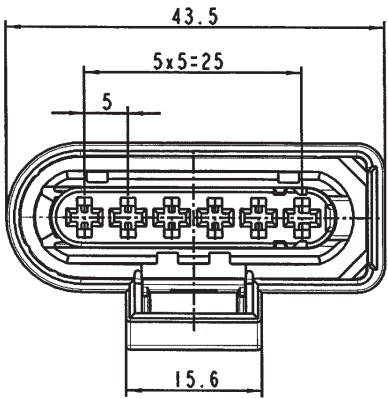
Dimensional characteristics

Notes:

2 way female housing



6 way female housing



Direct Links

Cross Reference

RoHS/LF P/N search

Document & Drawing search

Application tooling

Services

Contact us

Distributor list

Pricing request

Order samples

Literature


Brochures & catalogs

Product documentation

Technical library

Start > Search=60404311\* > 60404311

60404311



60404311

5 way component-to-wire Female housing

ACTIVE

Customer Drawing

Automotive division

Assistant

Add to Favorites

Email Datasheet

Print Datasheet

FCI Brings You More

Contact our sales/technical support

Sample request

Price request

Specifications

General

Mechanical

Physical

Terminal 1 Type

Environmental

Other Features

Application	Component to Wire
Ways	5
Coding version	Black
Product Type	Housing
Coding	Yes
Family	Engine Compartment Connectors
	Mechanical Polarization
	Circumferential Interface Seal

Features	Waterproof Application with Single Wire Seal (S.W.S.) Lateral Secondary Lock for Terminal Position Assurance (T.P.A.) Plastic Locking Feature
Hybrid	No
Main Terminal family	HPCS
Main Terminal size	2.8 mm
Sealed	Yes
Terminal Size	2.8
<b><u>Mechanical</u></b>	
Connector mating force	< 100N
<b><u>Physical</u></b>	
Color	Black
Material	PBT
Temperature (Range)	-40°C to +120°C
<b><u>Terminal 1 Type</u></b>	
Terminal type 1	HPCS Female 2.8 mm Terminal
Ways for Terminal Type 1	5
Contact insertion force for Terminal Type 1	< 20N
Retention force (Contact) for Terminal Type 1	> 80N
<b><u>Environmental</u></b>	
IMDS	Yes
<b><u>Other Features</u></b>	
Type	Female
Disclaimer	Displayed data is for information purposes only. For more information, please contact your local sales office. The supply of some products might be limited to some customers.

# Mouser Electronics

Authorized Distributor

Click to View Pricing, Inventory, Delivery & Lifecycle Information:

[Aptiv:](#)

[60404001](#) [60404101](#)