
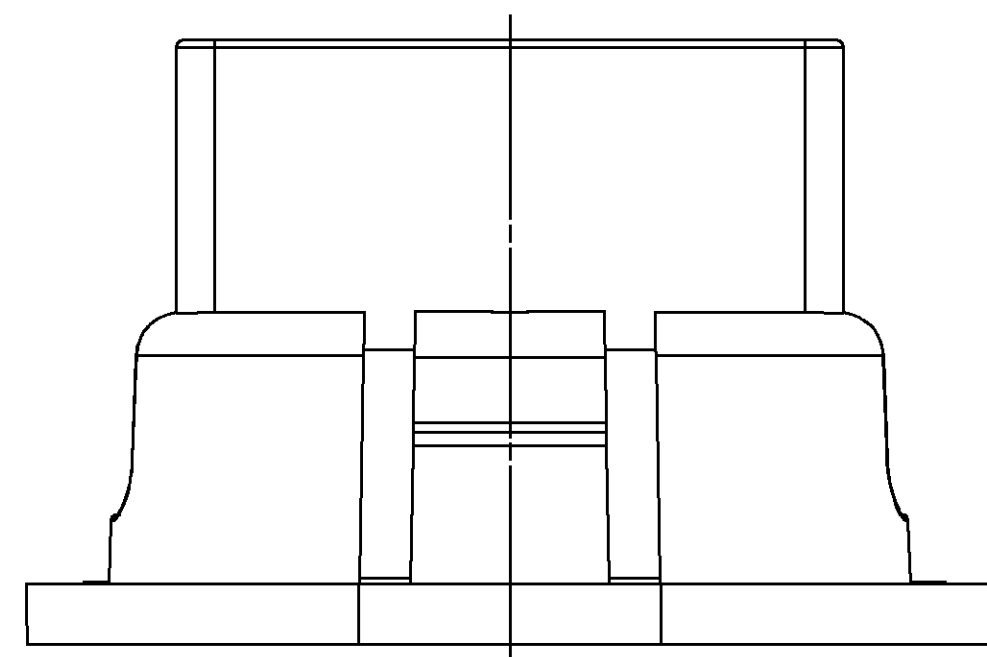
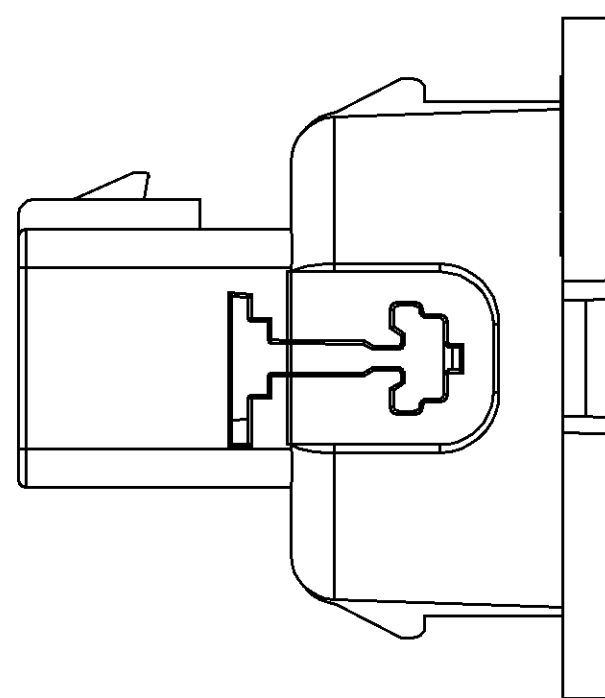
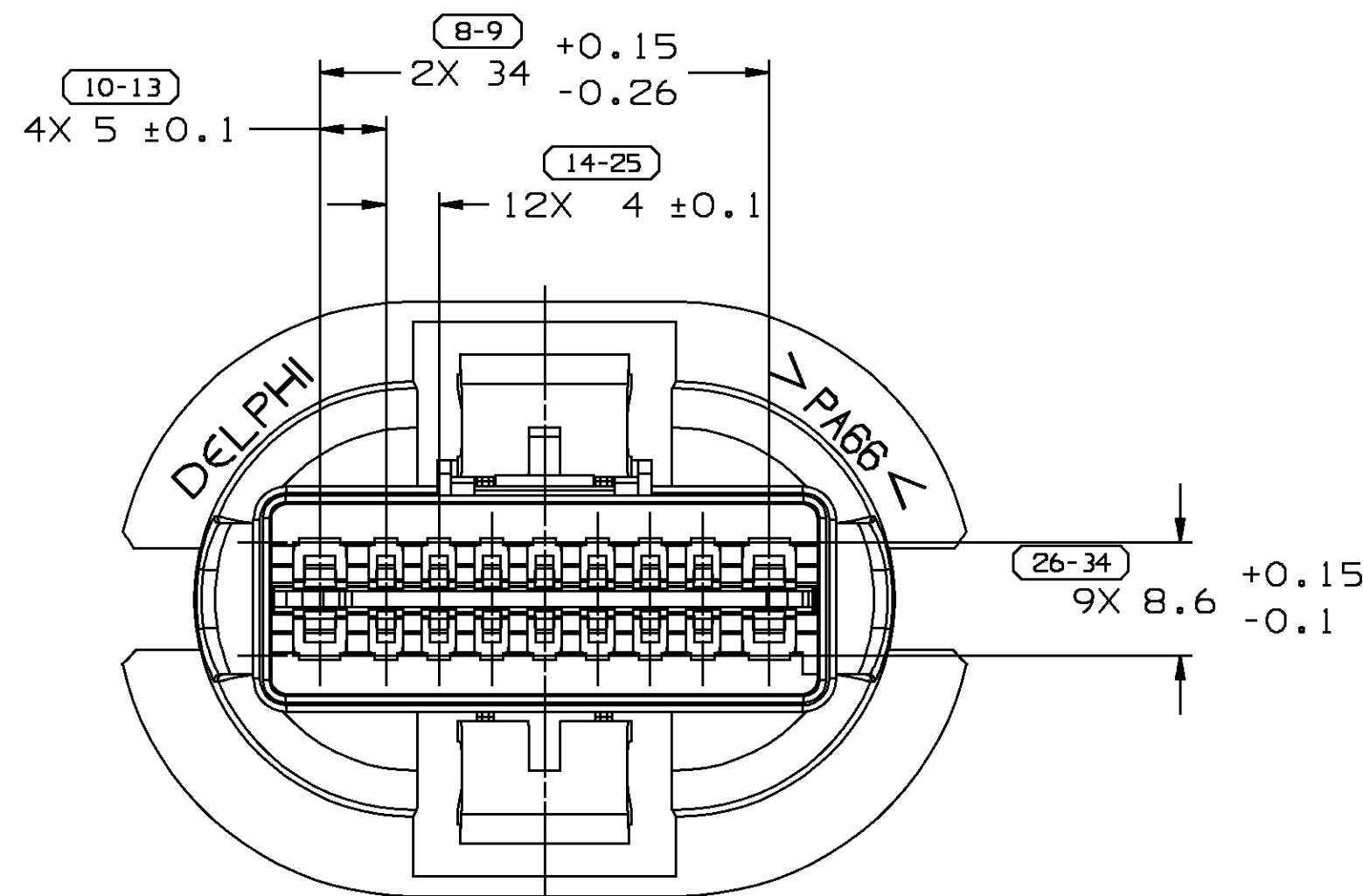
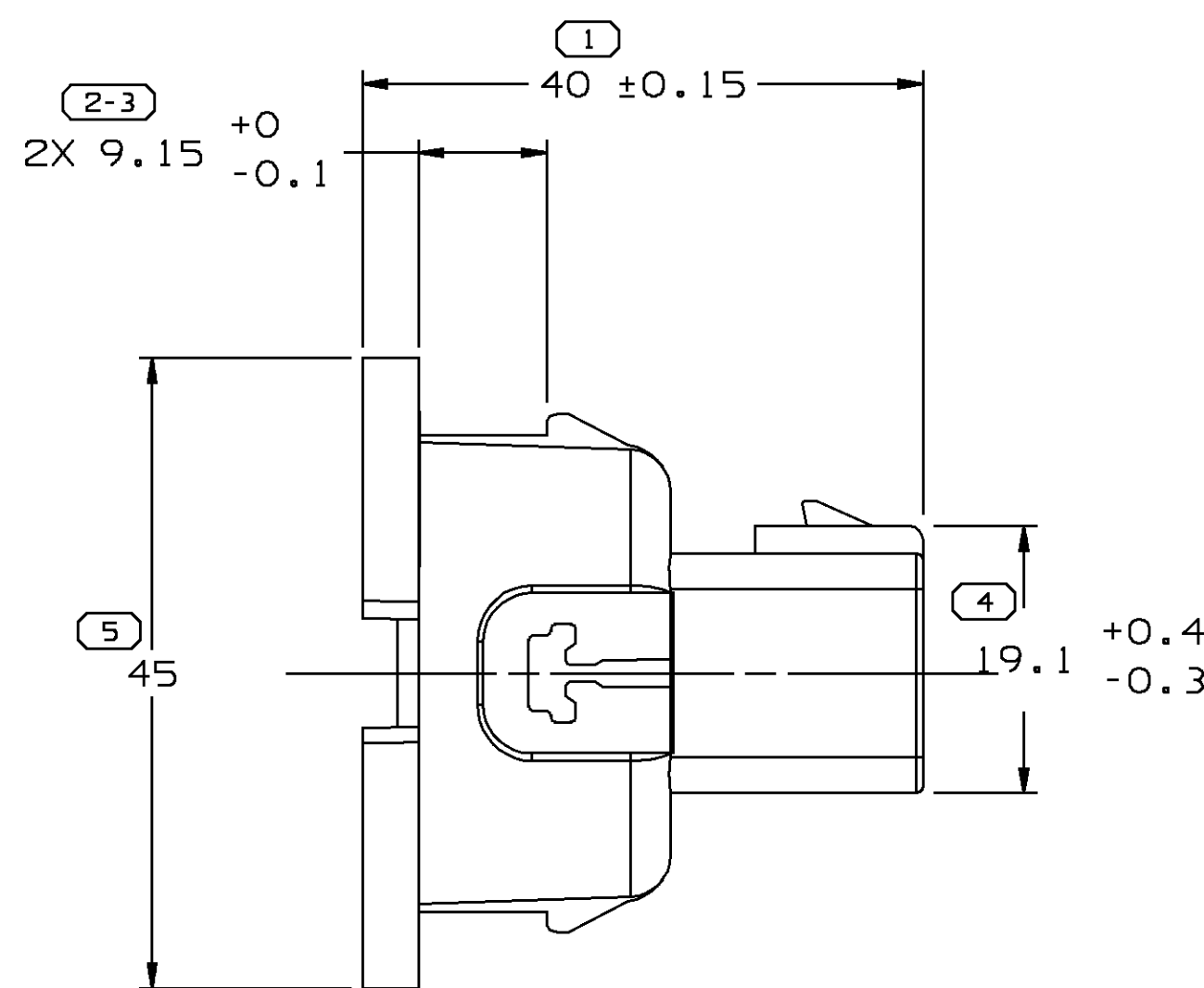
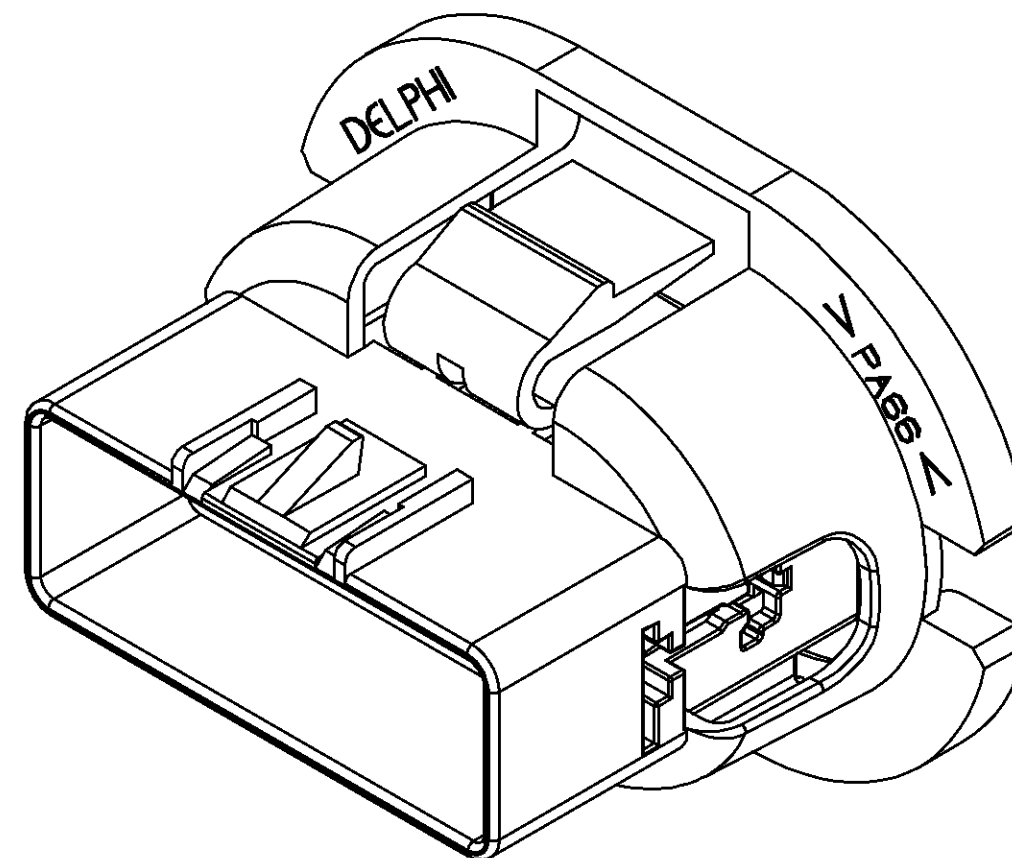
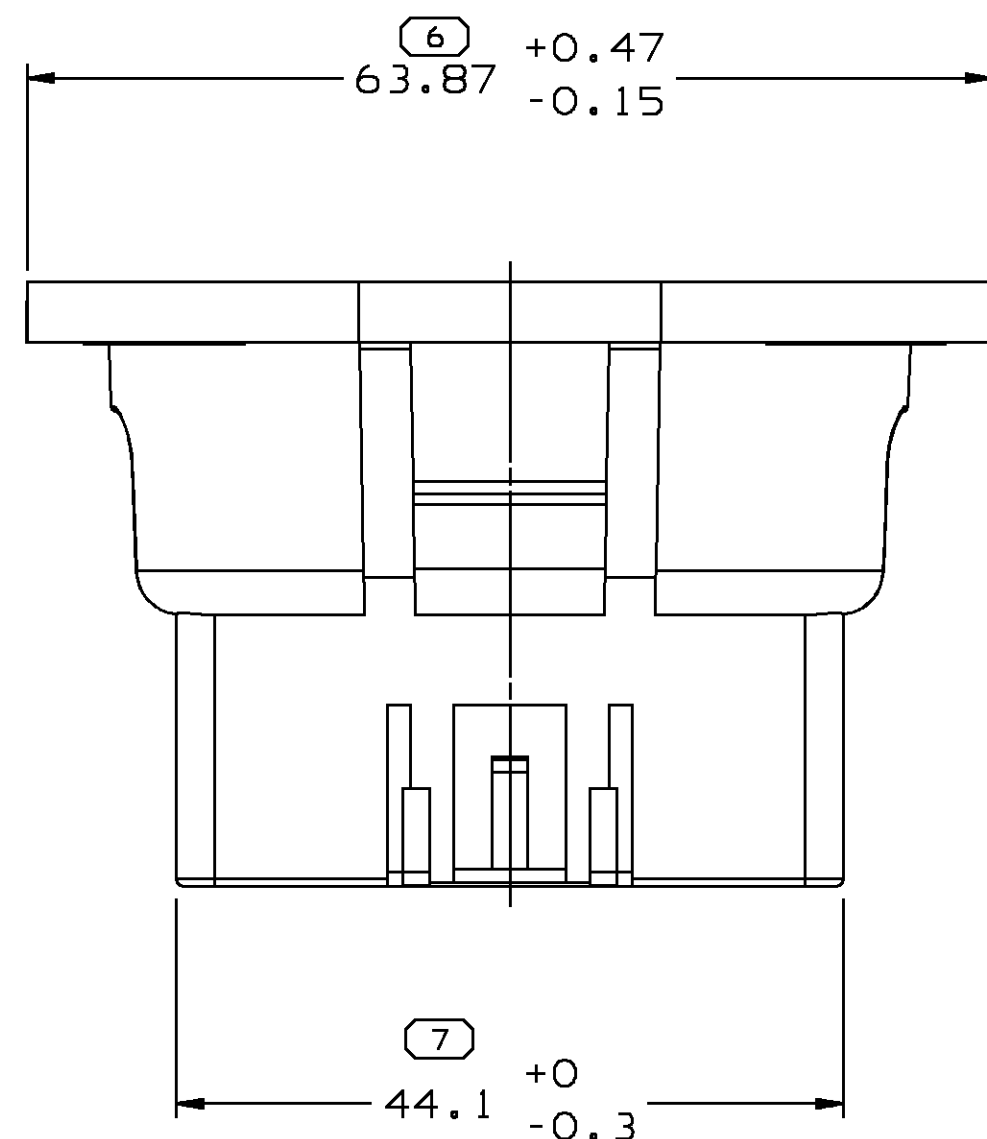


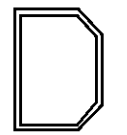

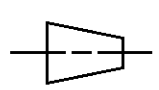
SYMBOL DEFINITION			MISSING NUMBERS
THE NUMBER INSIDE THE SYMBOL  CORRESPONDS TO THE NUMBER ON THE INSPECTION REPORT FOR THIS DRAWING/PART NUMBER	TOTAL NO. OF SYMBOLS ON DRAWING	10	
	LAST NO. USED	34	

DWG STATUS					ZONE	REVISION HISTORY	AUTH	DR	CK	APVD
DATE	STG	REV	CHG	N/P						
220C99	R	001	-	-		PART RELEASED	990005	JEB	JEB	BF



NOTES:

- UNLESS OTHERWISE SPECIFIED AND/OR INDICATED:
DIMENSIONS ARE TO FACE OF VIEW SHOWN AND
AUTOMATICALLY ROUNDED BY COMPUTER FOR INSPECTION.
(SEE MATH MODEL FOR PRECISE DIMENSION)
FOR ALL OTHER DIMENSIONS NOT SHOWN BUT REQUIRED FOR
TOOL BUILD, SEE MATH MODEL FOR PRECISE TOOL PATH DATA.
- MATING COMPONENTS:
CONNECTOR: 15317627 OR EQUIVALENT
GROMMET: 15305388 OR EQUIVALENT
SLC: 15317626 OR EQUIVALENT
TERMINALS-
CAVITIES B-H & L-T USE M GT 150 15304701
OR EQUIVALENT.
CAVITIES A,J,K, & W USE M GT 280 15304723
OR EQUIVALENT.
- DIMENSIONS MARKED "REF" ARE FOR REFERENCE ONLY
AND NO TOLERANCE LIMITS ARE ESTABLISHED.

DELPHI Automotive Systems																																	
MATERIAL SPEC R0071754 PA66 HS IM-BLK		<table><tr><th colspan="5">DIMENSIONAL RANGE</th></tr><tr><td>FROM</td><td>0</td><td>> 20</td><td>> 30</td><td>> 70</td></tr><tr><td>TO</td><td>20</td><td>30</td><td>70</td><td>100</td></tr><tr><td colspan="5">TOLERANCE UNLESS OTHERWISE SPECIFIED</td></tr><tr><td colspan="5">±0.15 ±0.2 ±0.3 ±0.4 ±0.5</td></tr><tr><td colspan="5">ANGULAR TOLERANCE ± 2°</td></tr></table>		DIMENSIONAL RANGE					FROM	0	> 20	> 30	> 70	TO	20	30	70	100	TOLERANCE UNLESS OTHERWISE SPECIFIED					±0.15 ±0.2 ±0.3 ±0.4 ±0.5					ANGULAR TOLERANCE ± 2°				
DIMENSIONAL RANGE																																	
FROM	0	> 20	> 30	> 70																													
TO	20	30	70	100																													
TOLERANCE UNLESS OTHERWISE SPECIFIED																																	
±0.15 ±0.2 ±0.3 ±0.4 ±0.5																																	
ANGULAR TOLERANCE ± 2°																																	
PART DRAWING		DISTR CODE																															
CODE NUMBER 6900	DWG DATE 220C99	SCALE 5:1																															
QC SPEC	STYLE	VOLUME cm³ 16.856																															
PART GEOMETRY 3D SOLID	UNLESS OTHERWISE SPECIFIED: PERFECT FORM REQUIRED FOR FEATURES OF SIZE AT MMC. TRUE POSITION TOLERANCES AND RELATED DATUMS APPLY AT CONDITION OF SIZE INDICATED IN FEATURE CONTROL FRAME. ALL OTHER GEOMETRIC TOLERANCES AND RELATED DATUMS APPLY RFS. SEPARATE TRUE POSITION CALLOUTS MAY BE GAGED SEPARATELY, REGARDLESS OF DATUM REFERENCE.																																
 CHANGE RESTRICTED NO MANUAL CHANGES	REFERENCE																																
	DATE																																
COPY OF MATH DATA DO NOT SCALE	001,701	APVD1 J. BANKSTON	220C99																														
		APVD2 J. BANKSTON	220C99																														
METRIC UNLESS OTHERWISE SPECIFIED, ALL DIMENSIONS ARE IN MILLIMETERS		APVD3 B. FLASK	250C99																														
		APVD4																															
		APVD5																															
THIRD ANGLE PROJECTION 	DRAWING NAME CONN 18M GT 150, 280																																
SHEET NUMBER 1 OF 1		DRAWING NUMBER 15373495																															
DWG STATUS STG REV N/P R 001 -		SIZE A1																															

5	PROCESS SENSITIVE DIMENSION
DIMENSIONS ENCLOSED IN () INDICATE REFERENCE DIMENSIONS AND NO TOLERANCE LIMITS ARE ESTABLISHED	

Mouser Electronics

Authorized Distributor

Click to View Pricing, Inventory, Delivery & Lifecycle Information:

[Aptiv:](#)

[15373495](#)