

Direct Links

Cross Reference

RoHS/LF P/N search

Document & Drawing search

Application tooling

Services

Contact us

Distributor list

Pricing request

Order samples

Literature


Brochures & catalogs

Product documentation

Technical library

Start > Search=30220801* > **30220801**

30220801



30220801

6 way Component-to-Wire Female housing

ACTIVE

Customer Drawing

Automotive division

Assistant

[Email Datasheet](#)

[Print](#)

FCI Brings You More

☒ [Contact our sales/tec](#)

☒ [Sample request](#)

☒ [Price request](#)

Specifications

General Mechanical Physical Terminal 1 Type Environmental Other Features

General

Application	Wire to Device
Ways	6
Coding version	Black
Product Type	Housing
Coding	Yes
Family	Wire to Device
Features	Mechanical Polarization Lateral Secondary Lock for Terminal Assurance (T.P.A.) Plastic Locking Feature Several Codings Available
Hybrid	No
Main Terminal family	DCS-2
Main Terminal size	1.5 mm
Sealed	No
Terminal Size	1.5

Mechanical

Connector mating force	< 100N
------------------------	--------

Physical

Color	Black
Material	PBT
Temperature (Range)	-40°C to+120°C

Terminal 1 Type

Terminal type 1	DCS-2 Female 1.5 mm Terminal
Ways for Terminal Type 1	6
Contact insertion force for Terminal Type 1	< 10N
Retention force (Contact) for Terminal Type 1	> 55N

Environmental

IMDS	Yes
------	-----

Other Features

Type	Female
Disclaimer	For more Information, please contact sales office. Displayed data is for information purposes only. The supply of some products might vary without notice.

Component-to-wire connectors



DCS-2

5/6/16/18 way female housing for 1.5 + 2.8 + 4.8 mm terminals

Features

- 5-6-16-18 position housing available
- Lateral secondary lock for terminal position assurance (T.P.A.)
- Plastic locking feature
- Mechanical polarization
- Several codings available
- Several colours available



Performance characteristics

- Temperature range:
from -40°C to +120°C
- Contact retention force:
> 55 N for DCS-2 1.5 mm terminals
> 80 N for DCS-2 2.8 mm terminals
- Contact insertion force:
< 10 N for DCS-2 1.5 mm terminals
> 15 N for DCS-2 2.8 mm terminals
- Connector mating force: < 100 N

Construction

- Housing material: PBT

Tooling

- Terminal removal tool: Consult us
- Mini applicator: Consult us

Connector compatibility

- Usable terminals:
 - DCS-2 1.5 mm female terminals
 - DCS-2 2.8 mm female terminals
 - 4.8 mm female terminals

Part Numbers	No. of position	Terminal size	Colour
3 020 18 01	5	1 x [2.8 mm] + 4 x [4.8 mm]	Black
3 020 18 12	5	1 x [2.8 mm] + 4 x [4.8 mm]	Brown
3 022 08 01	6	1.5 mm	Black
3 022 08 12	6	1.5 mm	Brown
3 022 08 23	6	1.5 mm	Red
3 022 08 35	6	1.5 mm	Blue
3 022 08 46	6	1.5 mm	White
3 021 06 01	6	2.8 mm	Black
3 021 06 12	6	2.8 mm	Brown
3 021 06 23	6	2.8 mm	Red
3 021 06 35	6	2.8 mm	Blue
3 021 06 46	6	2.8 mm	White
3 023 23 01	16	12 x [1.5 mm] + 4 x [2.8 mm]	Black
3 022 09 01	18	1.5 mm	Black
3 022 09 12	18	1.5 mm	Brown

Component-to-wire connectors



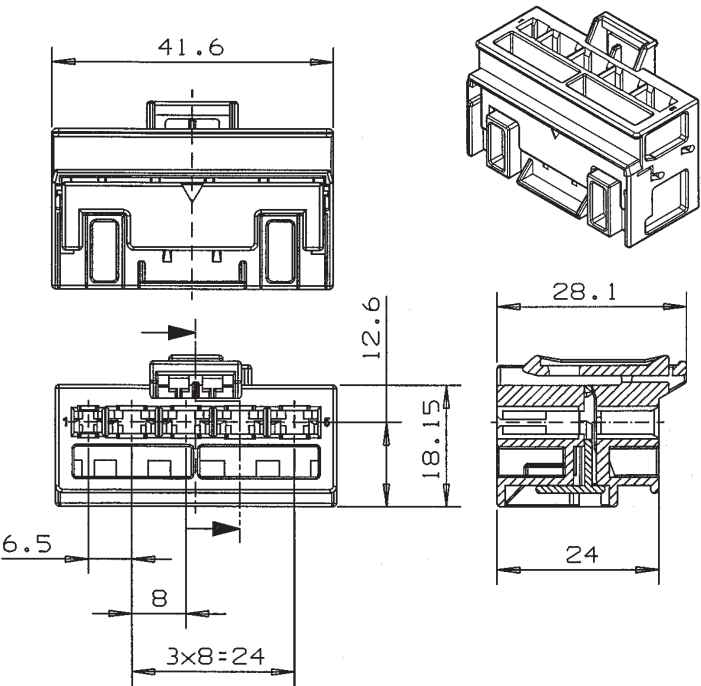
DCS-2

5/6/16/18 way female housing for 1.5 + 2.8 + 4.8 mm terminals

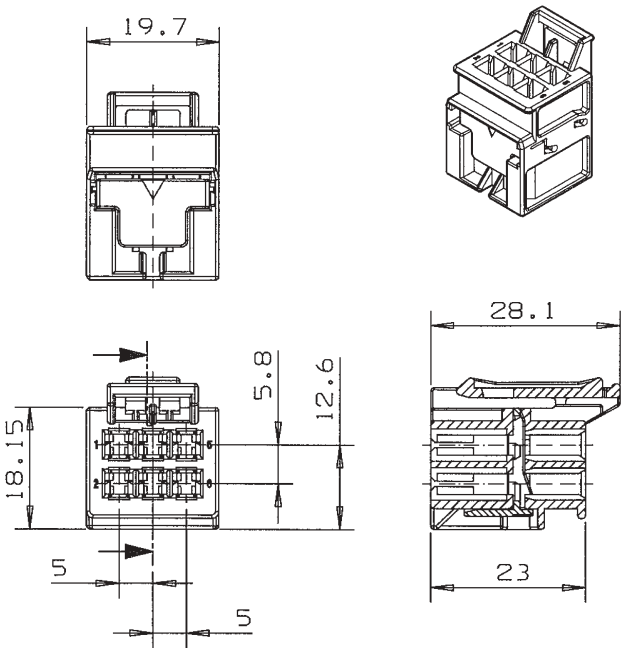
Dimensional characteristics

Notes:

5 way housing - 2.8 mm terminals



6 way housing - 2.8 mm terminals



Component-to-wire connectors **FCI**

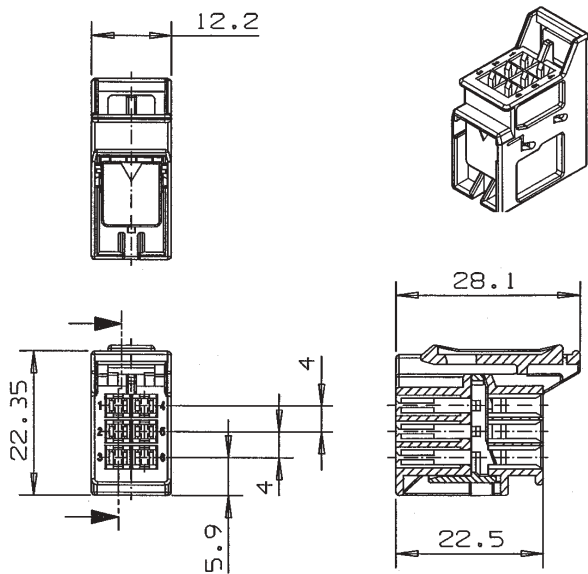
DCS-2

5/6/16/18 way female housing for 1.5 + 2.8 + 4.8 mm terminals

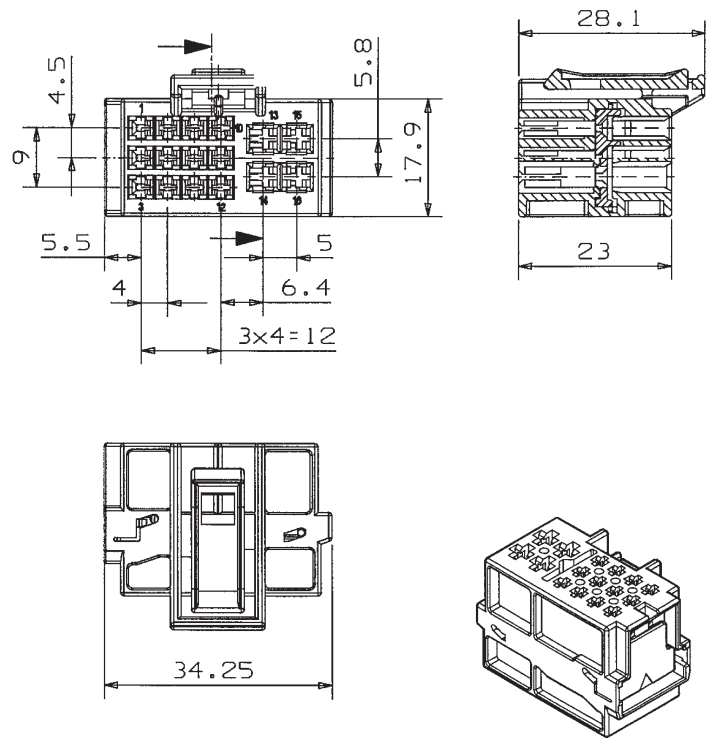
Dimensional characteristics

Notes:

6 way housing - 1.5 mm terminals



16 way housing - 1.5+2.8 mm terminals



Component-to-wire connectors



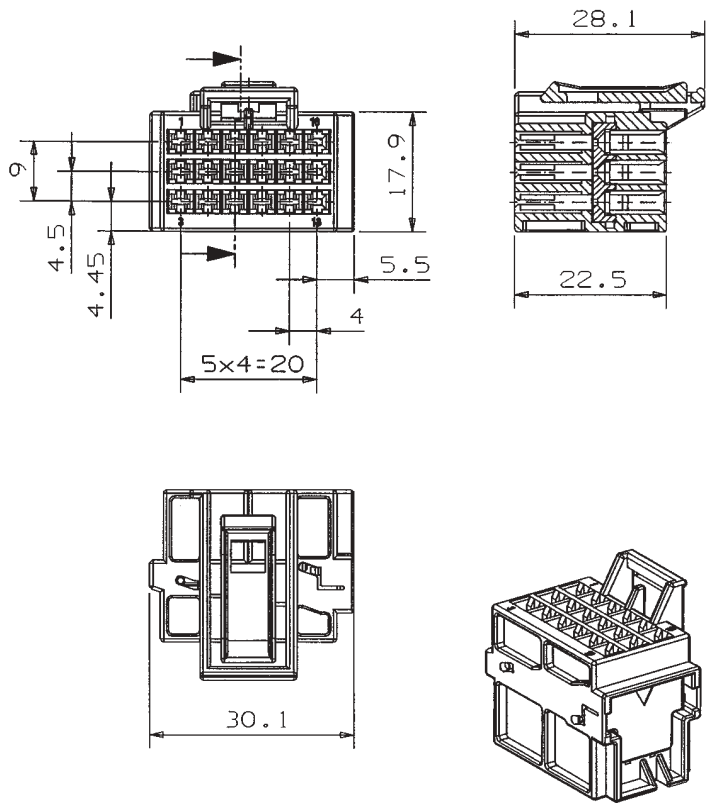
DCS-2

5/6/16/18 way female housing for 1.5 + 2.8 + 4.8 mm terminals

Dimensional characteristics

Notes:

18 way housing - 2.8 mm terminals



Mouser Electronics

Authorized Distributor

Click to View Pricing, Inventory, Delivery & Lifecycle Information:

[Aptiv:](#)
[30232301](#)