

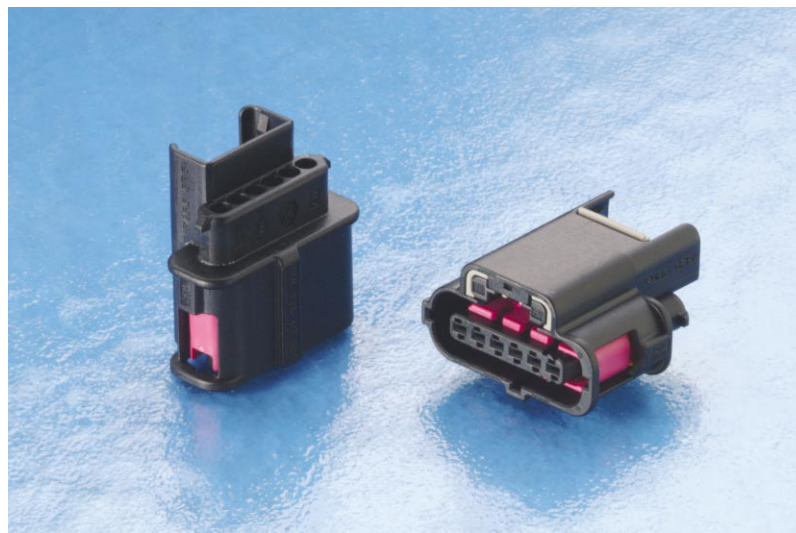
Component-to-wire connectors **FCi**

DCK

6 way sealed female housing for 1.5 mm terminals

Features

- 6 position single row housing
- Spring-lock principle
- Waterproof application with single wire seal
- Lateral secondary lock for terminal position assurance (T.P.A.)
- Circumferential interface seal
- Mechanical polarization



Performance characteristics

- Temperature range: from -40°C to +120°C
- Contact retention force: > 55 N
- Contact insertion force: < 10 N
- Connector mating force: < 100 N
- Sealing protection: IP 67

Construction

- Housing material: PA/PBT
- Circumferential interface seal: Silicone

Tooling

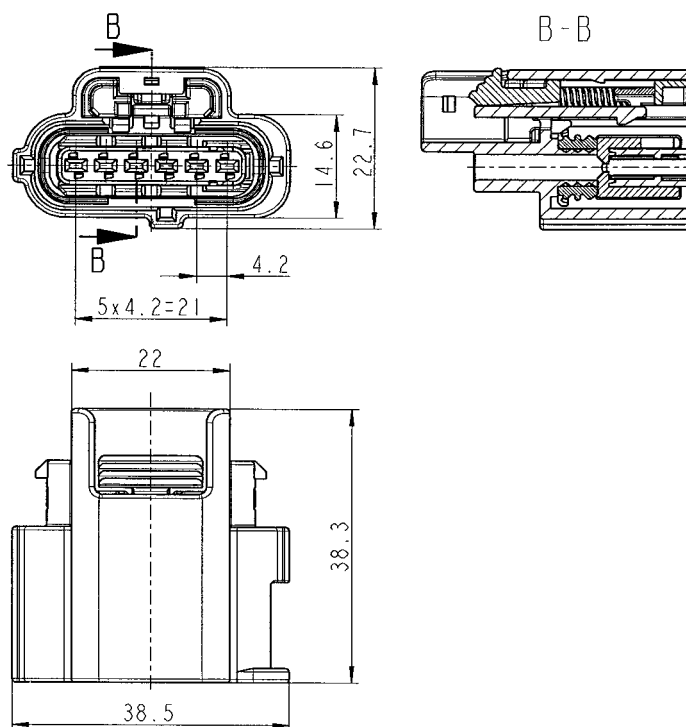
- Terminal removal tool: Consult us
- Mini-applicator: Consult us

Connector compatibility

- Usable terminals: DCK 1.5 mm female terminals

Dimensional characteristics

6 way female housing



Part Numbers	No. of position	Terminal size	Colour
3 04 01101	6	1.5 mm	Black

Mouser Electronics

Authorized Distributor

Click to View Pricing, Inventory, Delivery & Lifecycle Information:

[Aptiv:](#)
[30401101](#)