
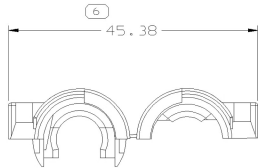
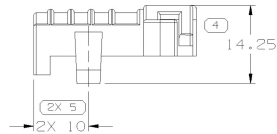
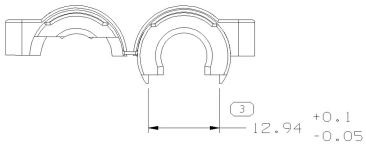
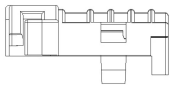
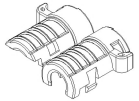
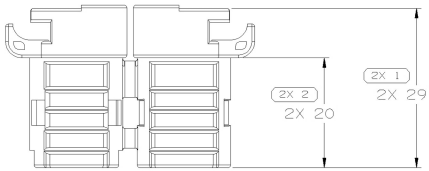
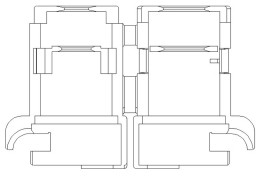




SYMBOL DEFINITION	
A DIMENSION WITHOUT AN INSPECTION REPORT SYMBOL  DOES NOT REQUIRE INSPECTION. IT MAY BE CONTROLLED ON THE INDIVIDUAL COMPONENT DRAWING.	TOTAL NO OF INSPECTIONS REQUIRED
	6
	LAST NO. USED
	6

MISSING SYMBOLS		NO MISSING SYMBOL NUMBER	
DATE		06AP04	
STG		R	
REV		01	
N/P		-	
CHG		-	
ZONE		-	
REVISION HISTORY		CREATED PART DRAWING	
AUTH		253837	



- NOTES
- UNLESS OTHERWISE SPECIFIED AND/OR INDICATED:  
DIMENSIONS ARE TO FACE OF VIEW SHOWN AND  
AUTOMATICALLY ROUNDED BY COMPUTER FOR INSPECTION  
(SEE MATH MODEL FOR PRECISE DIMENSIONS). FOR ALL  
OTHER DIMENSIONS NOT SHOWN BUT REQUIRED FOR TOOL  
BUILD, SEE MATH MODEL FOR PRECISE TOOL PATH DATA.
  - MATING COMPONENTS OR EQUIVALENT:  
CONNECTOR : 12065287
  - NO GAP, DEVIATION FROM MATING PART DURING ASSEMBLING.
  - HAVE TO BE ASSEMBLED TO MATING PART EASILY WITHOUT ANY INTERRUPTION.
  - APPLICATION CONDUIT SIZE :  $\varnothing 7$
  - (31X10.1) RAISED DELPHI CORPORATE BRAND TO BE LOCATED ON ANY  
EXTERIOR SURFACE, PREFERABLY VISIBLE AT FINAL ASSEMBLY.  
OPTIONAL CONSTRUCTION TO BE "PED" OR NO LOGO.



DWG TYPE		PART DRAWING	
STYLE			
VOLUME (CM <sup>3</sup> )	DISTR CODE		
2.399	D		
UNLESS OTHERWISE SPECIFIED			
THIS DOCUMENT IS IN ACCORDANCE WITH ASME Y14.5M-1994 AS AMENDED BY THE DM GLOBAL DIMENSIONING AND TOLERANCING ADDENDUM-2001. SEPARATE PATTERNS OF FEATURES MAY BE USED SEPARATELY REGARDLESS OF DATUM REFERENCES.			
ALL DIMENSIONS ARE IN MILLIMETERS			
REFERENCE			
THIRD ANGLE PROJECTION		DO NOT SCALE	
			
USE MATH DATA		UNIGRAPHICS	

<b>DELPHI</b>			
DELPHI PACKARD ELECTRIC SYSTEMS WARREN, OH			
DR	M.K.K M		
APVD1	K.S.BACK		
APVD2	T.L.AHN		
APVD3	T.L.AHN		
APVD4			
APVD5			
SUBSTANCES OF CONCERN AND RECYC CONTENT PER DELPHI 10949001			
MATERIAL M3596002 PA6 HS - BLK			
DRAWING NAME LOCK TPA BLK			
DRAWING NUMBER 15479467			
SIZE	SCALE	FRAME NO	SHEET NO
A1	2:1	1 OF 1	1 OF 1

DIMENSIONAL RANGE (MM)		CHART E1	
FROM	TO	> 0	> 300
20	30	20	300
30	70	30	300
70	100	70	300
100	150	100	300
150	200	150	300
200	250	200	300
250	300	250	300
300	400	300	300
TOLERANCE UNLESS OTHERWISE SPECIFIED			
±0.15   ±0.2   ±0.3   ±0.4   ±0.5   ±0.6   ±0.8   ±1   ±1.2			
ANGULAR TOLERANCE 42°			

# Mouser Electronics

Authorized Distributor

Click to View Pricing, Inventory, Delivery & Lifecycle Information:

[Aptiv:](#)

[15479467](#)