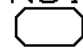
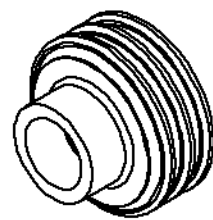
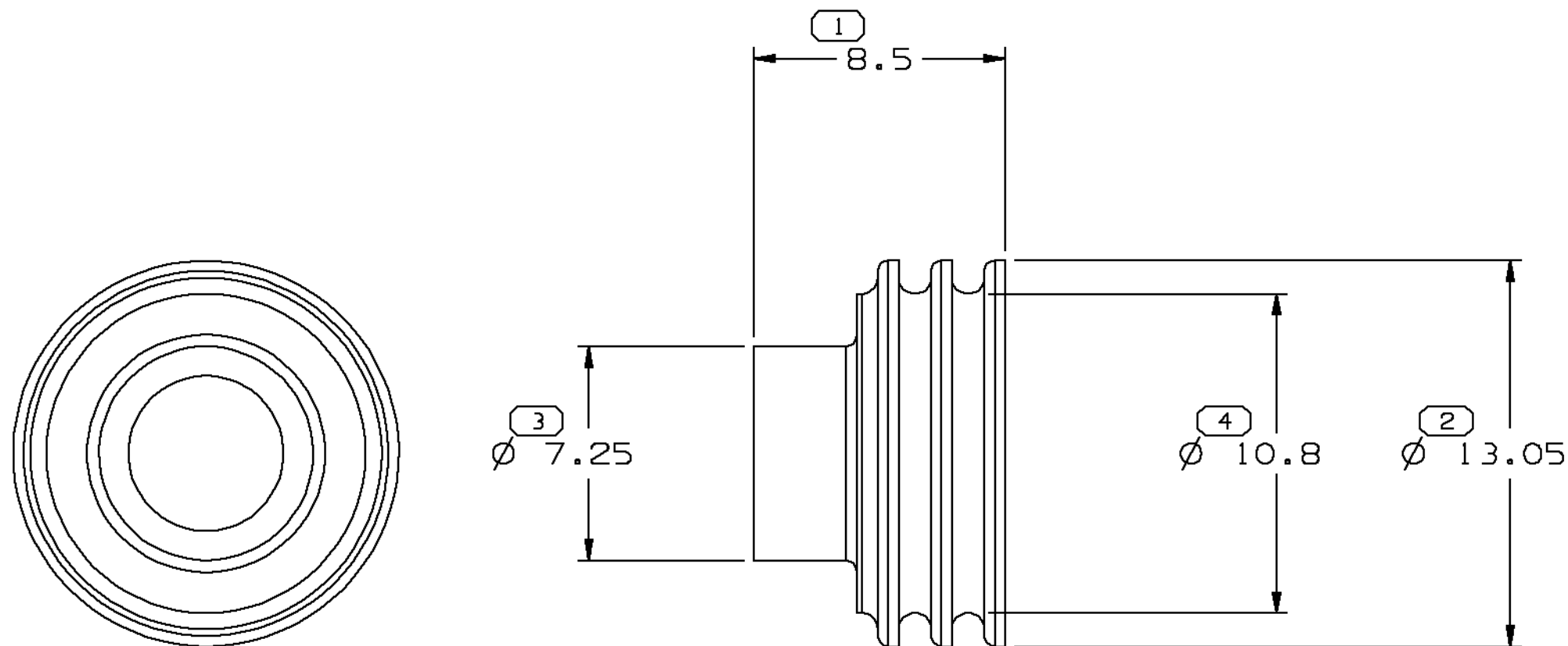


| SYMBOL DEFINITION | | | MISSING NUMBERS |
|--|---------------------------------|---|-----------------|
| THE NUMBER INSIDE THE SYMBOL  CORRESPONDS TO THE NUMBER ON THE INSPECTION REPORT FOR THIS DRAWING/PART NUMBER | TOTAL NO. OF SYMBOLS ON DRAWING | 4 | |
| | LAST NO. USED | 4 | |

| DWG STATUS | | | | | ZONE | REVISION HISTORY | | | AUTH | DR | CK | APVD |
|------------|-----|-----|-----|-----|------|------------------------|--|--|--------|-----|-----|------|
| DATE | STG | REV | CHG | N/P | | | | | | | | |
| 11DE00 | R | 001 | - | - | | WAS PE072514; RELEASED | | | 205052 | TLP | TLP | RF |


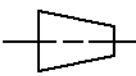


VIEW SCALE DOES NOT
REFLECT ACTUAL PART SIZE

NOTES

- UNLESS OTHERWISE SPECIFIED AND/OR INDICATED:
DIMENSIONS ARE TO FACE OF VIEW SHOWN AND
AUTOMATICALLY ROUNDED BY COMPUTER FOR INSPECTION.
(SEE MATH MODEL FOR PRECISE DIMENSIONS.) FOR ALL
OTHER DIMENSIONS NOT SHOWN BUT REQUIRED FOR TOOL
BUILD, SEE MATH MODEL FOR PRECISE TOOL PATH DATA.
- MATING COMPONENTS OR EQUIVALENT:
CONNECTOR - 15355392
- PARTS ARE TO BE PACKAGED IN SEALED PLASTIC BAGS. GROSS
WEIGHT INCLUDING CARTON IS NOT TO EXCEED 34 POUNDS.

| | | | | |
|--|------|------|------|--------|
| 1 PROCESS SENSITIVE DIMENSION | | | | |
| DIMENSIONS ENCLOSED IN () INDICATE REFERENCE DIMENSIONS AND NO TOLERANCE LIMITS ARE ESTABLISHED | | | | |
| DIMENSIONAL RANGE (MM) CHART C | | | | |
| FROM | 0 | > 25 | > 60 | > 80 |
| TO | 25 | 60 | 80 | |
| TOLERANCE UNLESS OTHERWISE SPECIFIED | | | | |
| | ±0.3 | ±0.5 | ±0.6 | ±0.75% |
| ANGULAR TOLERANCE ± 2° | | | | |

| | | | |
|---|--|---------------------------------|--------------------------------------|
| DELPHI Automotive Systems | | | |
| MATERIAL SPEC R0070017 SIL RED DK | | | |
| SUBSTANCES OF CONCERN AND RECYCLED CONTENT PER DELPHI-A 01949001 | | | |
| PART DRAWING | | | DISTR CODE D |
| CODE NUMBER 6901 | DWG DATE 11DE00 | SCALE 5:1 | |
| QC SPEC | STYLE | VOLUME cm ³ 0.487 | |
| PART GEOMETRY 3D SOLID | UNLESS OTHERWISE SPECIFIED: THIS DOCUMENT IS IN ACCORDANCE WITH ASME Y14.5M - 1994 AS AMENDED BY THE GM GLOBAL DIMENSIONING AND TOLERANCING ADDENDUM - 1997. ALL GEOMETRIC TOLERANCES AND RELATED DATUMS APPLY RFS. RULE #1 (PERFECT FORM AT MMC) DOES NOT APPLY WHEN RELATIONSHIP BETWEEN FEATURES IS ESTABLISHED BY ORIENTATION OR LOCATION TOLERANCES. SEPARATE POSITION CALLOUTS MAY BE GAGED SEPARATELY REGARDLESS OF DATUM REFERENCES. | | |
|  CHANGE RESTRICTED NO MANUAL CHANGES | REFERENCE | DR | DATE |
| COPY OF MATH DATA DO NOT SCALE | | APVD1 T. L. PACK | 11DE00 |
| | | APVD2 T. L. PACK | 11DE00 |
| METRIC UNLESS OTHERWISE SPECIFIED, ALL DIMENSIONS ARE IN MILLIMETERS | | APVD3 R. FETCENKO | 11DE00 |
| | | APVD4 | |
| | | APVD5 | |
| THIRD ANGLE PROJECTION  | DRAWING NAME SEAL CBL M/P 800 | | |
| SHEET NUMBER 1 OF 1 | DRAWING NUMBER 15355390 | | DWG STATUS STG REV N/P R 001 - |
| | | | SIZE A1 |

Mouser Electronics

Authorized Distributor

Click to View Pricing, Inventory, Delivery & Lifecycle Information:

[Aptiv:](#)

[15355390](#)