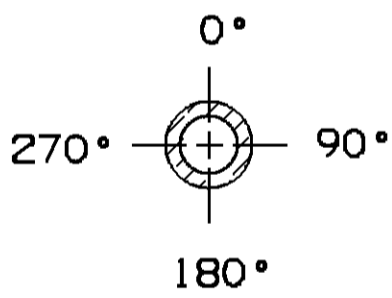
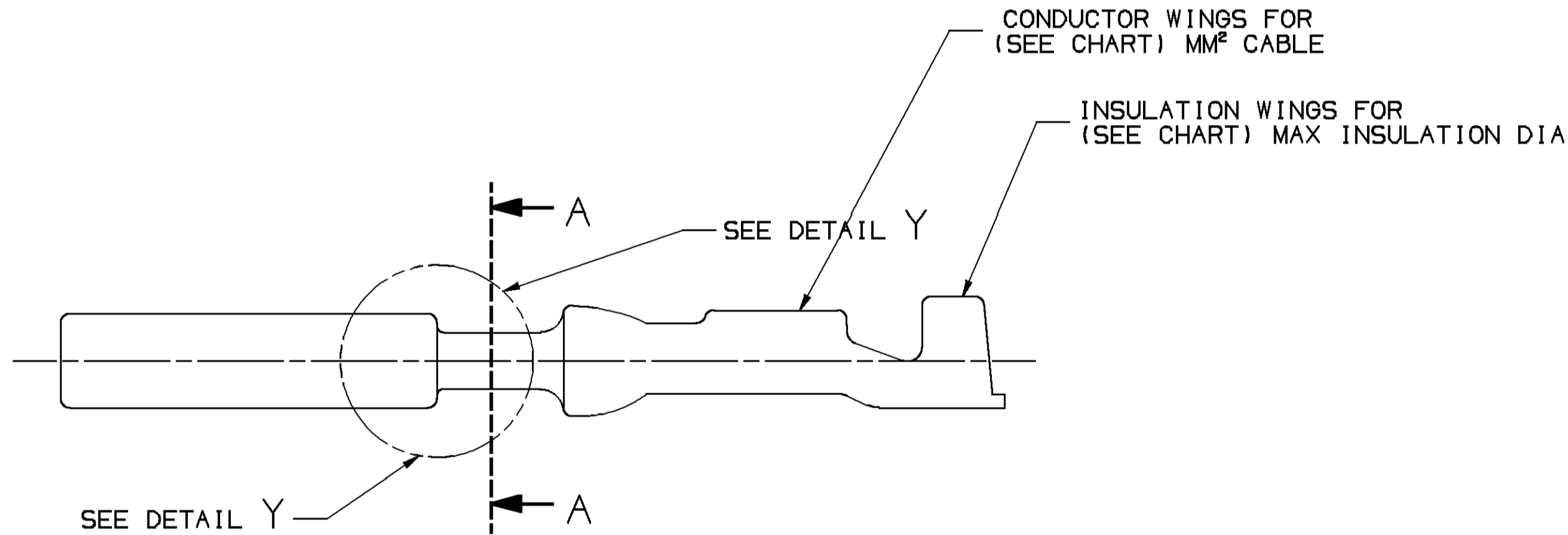
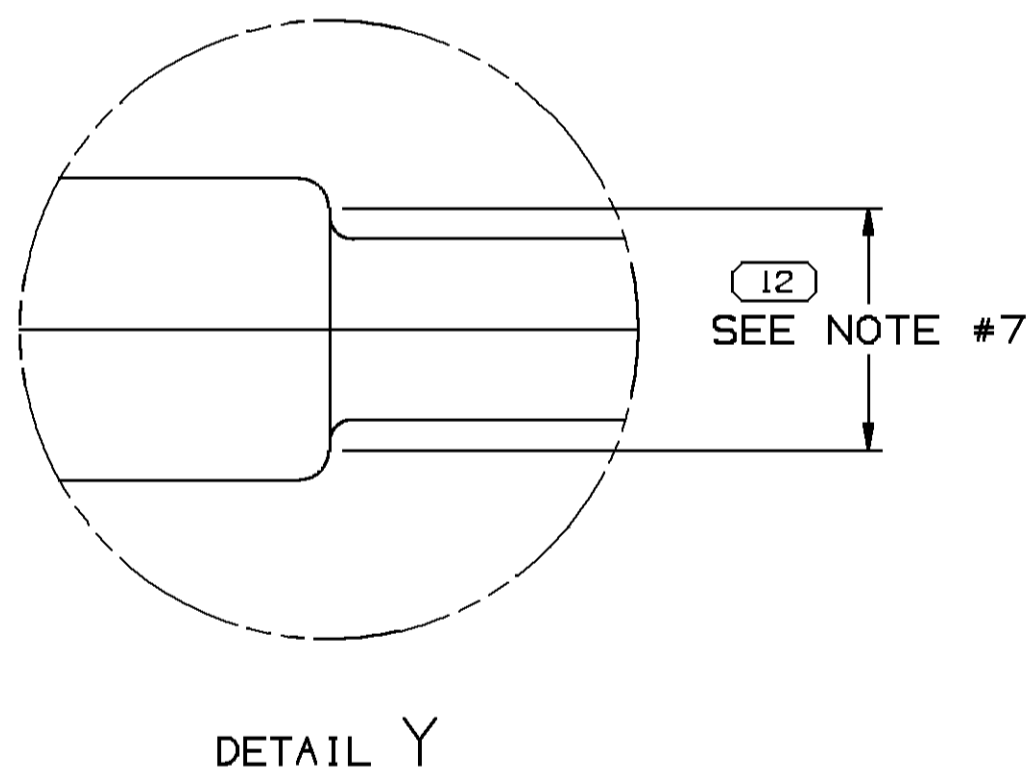
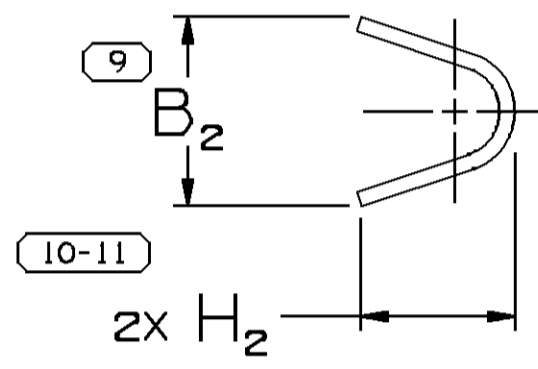
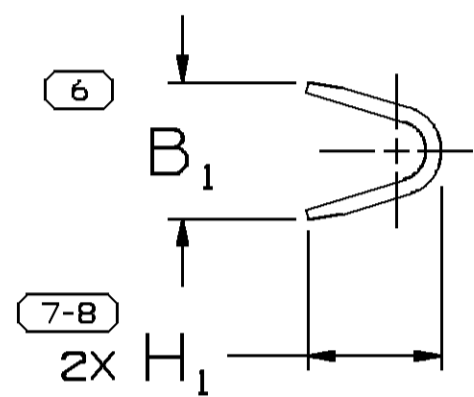
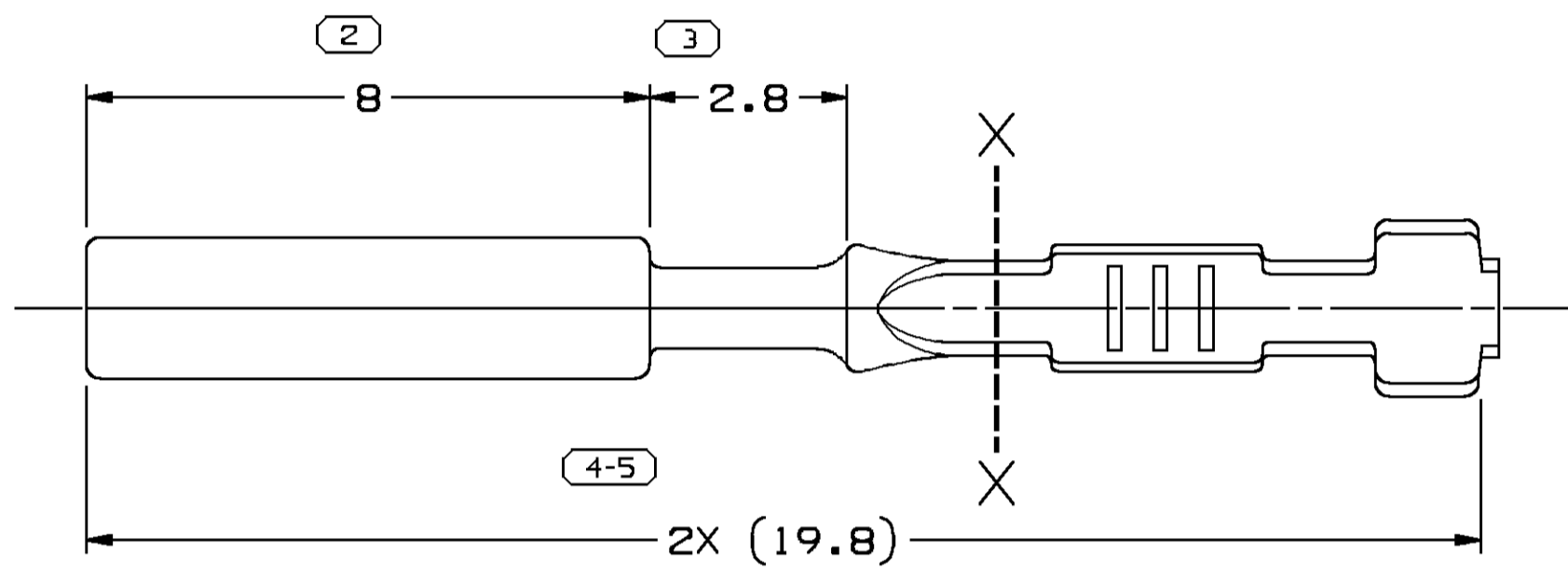
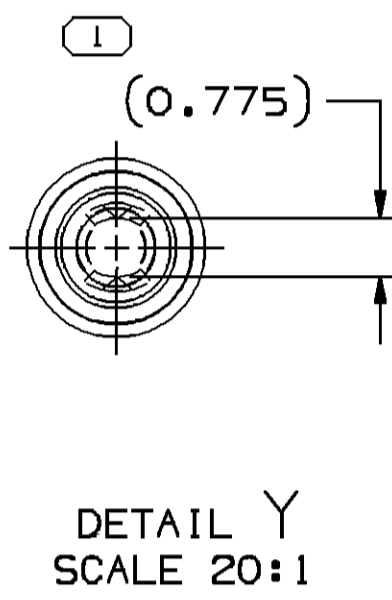


SYMBOL DEFINITION		MISSING NUMBERS	
A DIMENSION WITHOUT AN INSPECTION REPORT SYMBOL ( ) DOES NOT REQUIRE INSPECTION. IT MAY BE CONTROLLED ON AN INDIVIDUAL COMPONENT DRAWING	TOTAL NO. OF SYMBOLS ON DRAWING	9	
	LAST NO. USED	12	

CNS STATUS		ZONE		REVISION HISTORY		AUTH		DR		APVD	
DATE	STG	REV	N/P	CHG							
10JL02	R	01	-	-	15305314 & 15326244 - REVISED MATERIAL SPEC; 15435885 & 15435886 - RELEASED	224816	HH	EDV			60
260C02	R	02	-	-	UPDATED PDM ATTRIBUTES	232628	AFM	EDV			60
23AP03	R	03	-	-	15305314 - REVISED MAT'L SPEC	239485	RH	RH			60
13MY03	R	04	-	-	UPDATED PDM ATTRIBUTES	240850	HH	JGR			60
24SE10	R	05	-	-	ALL PARTS - UPDATED PDM ATTRIBUTES	412077	ACR	JVM	LHT		
18AU11	R	06	-	-	UPDATED PDM ATTRIBUTES	415168	EDA	MEA	EDA		



SECTION A-A

#### NOTES

- UNLESS OTHERWISE SPECIFIED AND/OR INDICATED: DIMENSIONS ARE TO FACE OF VIEW SHOWN AND AUTOMATICALLY ROUNDED BY COMPUTER FOR INSPECTION. (SEE MATH MODEL FOR PRECISE DIMENSIONS). FOR ALL OTHER DIMENSIONS NOT SHOWN BUT REQUIRED FOR TOOL BUILD, SEE MATH MODEL FOR PRECISE TOOL PATH DATA.
- MATING COMPONENTS OR EQUIVALENT: CONNECTOR 15318136 PIN 15318132
- MAXIMUM CURRENT CAPACITY IS 7 AMPS.
- TERMINAL MUST FIT A MAX Ø2.1 MM GAGE HOLE 19.8 MM DEEP AFTER CRIMPING.
- TERMINAL MUST CONFORM TO VPS #B-149
- TERMINAL NECK AREA MUST NOT FRACTURE WHEN 45° BEND TEST IS APPLIED. NO VISIBLE CRACKS UNDER 10X MAGNIFICATION.
- 1.7 MIN FLAT DIM TO BE MEASURED AT 0° TO 180° AND 1.65 MIN FLAT DIM TO BE MEASURED AT 90° TO 270°. SEE SECTION A-A

15435886	01	AD	-	0.203 X 34.29	M3696KN1 METL NONFERROUS C42500 1/2 HD	0.35-0.5	21	1.83-1.47	1.8	2.5	1.8	2.1	
15435885	01	AD	-	0.203 X 34.29	M3696JN9 METL NONFERROUS C42500 1/2 HD	0.35-0.5	21	1.83-1.47	1.8	2.5	1.8	2.1	
15326244	02	AF	-	0.203 X 34.29	M3661CN4 METL NONFERROUS C42500 1/2 HD	0.35-0.5	21	1.83-1.47	1.8	2.5	1.8	2.1	
15305314	02	AJ	-	0.203 X 34.29	M3696JN9 METL NONFERROUS C42500 1/2 HD	M3661CN2 METL NONFERROUS C42500 1/2 HD	0.35-0.5	21	1.83-1.47	1.8	2.5	1.8	2.1
PART NO	REV	N/P	STATUS	SIZE	PREFERRED SPEC	OPTIONAL SPEC	SIZE (MM²)	ID NO	DIA	(B <sub>1±0.2</sub> )	(B <sub>2±0.2</sub> )	(H <sub>1</sub> )	(H <sub>2</sub> )
				MATERIAL			CABLE						

6 PROCESS SENSITIVE DIMENSION	
DIMENSIONS ENCLOSED IN ( ) INDICATE REFERENCE DIMENSIONS AND NO TOLERANCE LIMITS ARE ESTABLISHED	
DIMENSIONAL RANGE (MM)	CHART (2)
FROM 0 TO 12	> 12
TOLERANCE UNLESS OTHERWISE SPECIFIED	
±0.1	±0.2
ANGULAR TOLERANCE 12°	

THIRD ANGLE PROJECTION	
DO NOT SCALE	USE MATH DATA

<b>DELPHI</b>	
DELPHI PACKARD ELECTRICAL/ELECTRONIC ARCHITECTURE WARREN, OH	
DR TYPE <b>PART DRAWING</b>	DATE
STYLE	
VOLUME (OMP)	DISTR CODE
UNLESS OTHERWISE SPECIFIED	
THIS DOCUMENT IS IN ACCORDANCE WITH ASME Y14.5M-1994 AS MODIFIED BY THE 2018 GLOBAL DIMENSIONING AND TOLERANCING HANDBOOK - (1997) ALL GEOMETRIC TOLERANCES AND RELATED DATUMS APPLY. RULE #1 (HORIZONTAL) AT MNCI DOES NOT APPLY WHEN RELATIONSHIP BETWEEN FEATURES IS ESTABLISHED BY ORIENTATION OR LOCATION TOLERANCES. SEPARATE POSITION CALLOUTS MAY BE BARED SEPARATELY, REMOVAL OF DIMENSION REFERENCE.	
ALL DIMENSIONS ARE IN MILLIMETERS	
REFERENCE	
DRAWING NAME TAXI TERM F MIC/P 100W	
DRAWING NUMBER 15409817	
SIZE A0	SCALE 10:1
FRAME NO 1	SHEET NO 1
STG R	REV 06

# Mouser Electronics

Authorized Distributor

Click to View Pricing, Inventory, Delivery & Lifecycle Information:

[Aptiv:](#)

[15435885-L](#)