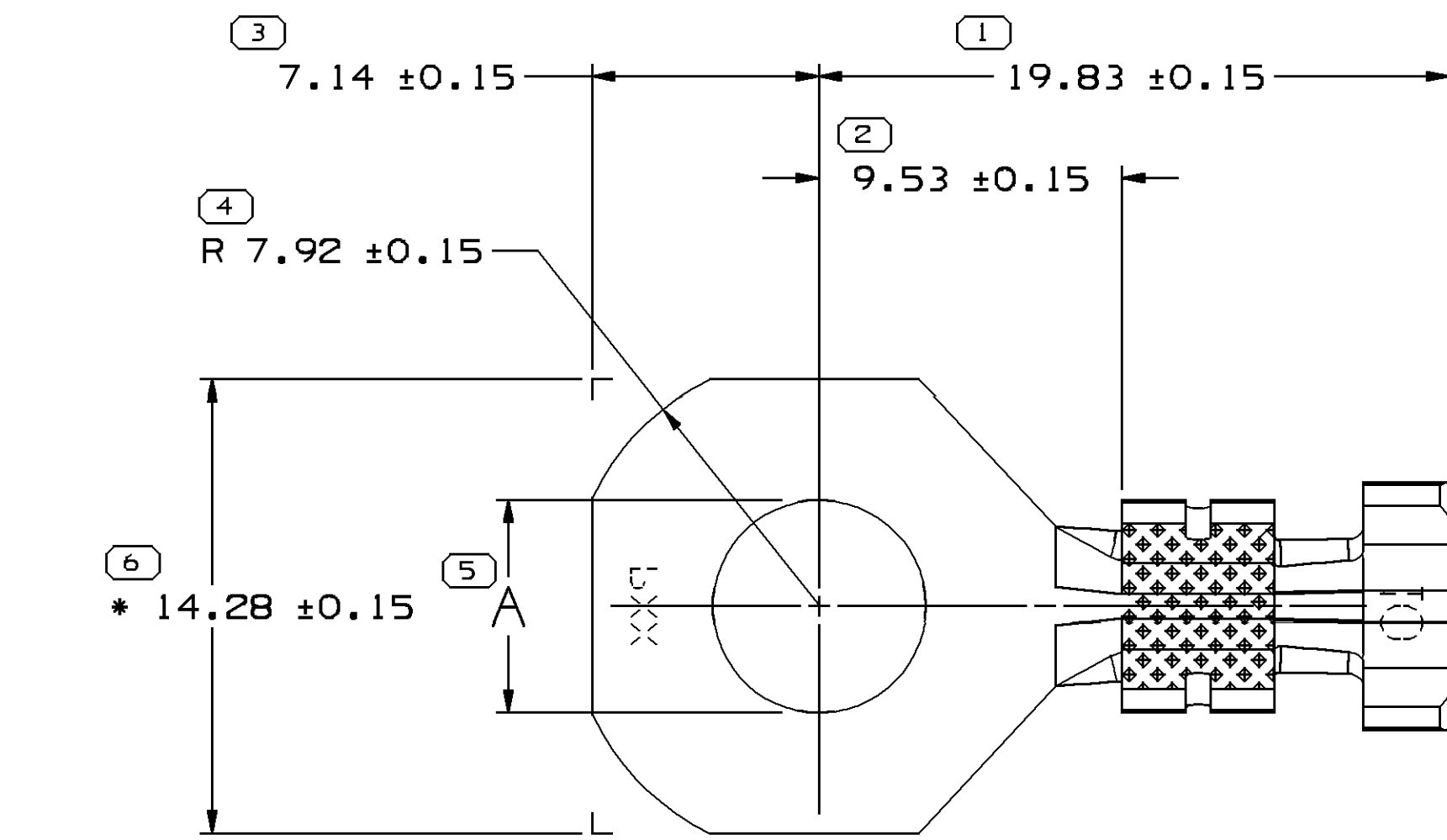
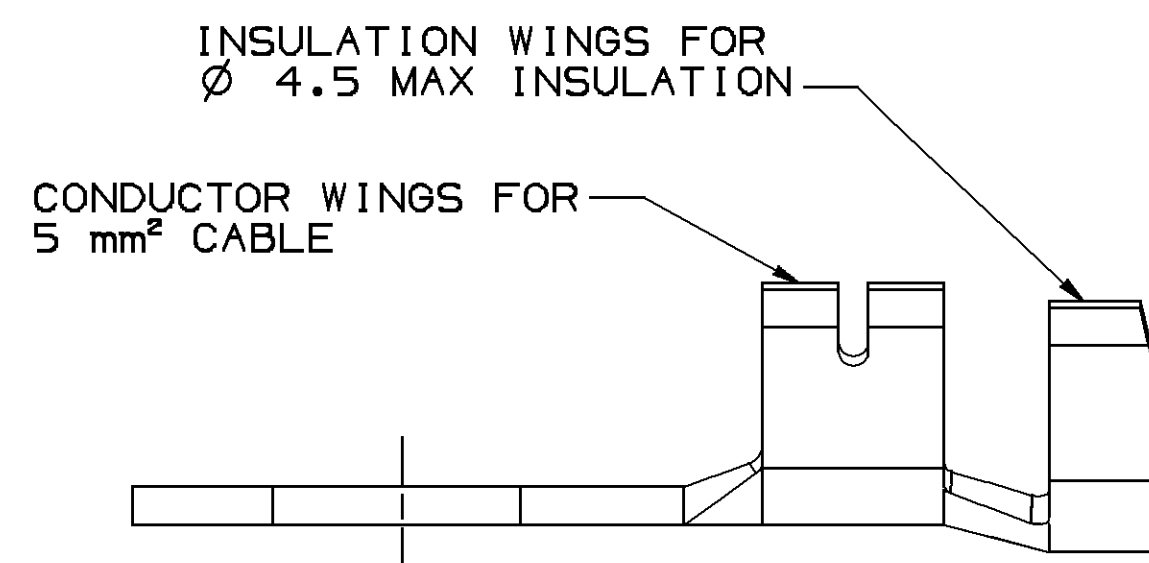


24 23 22 21 20 19 18 17 16 15 14 13 12 11 10 9 8 7 6 5 4 3 2 1

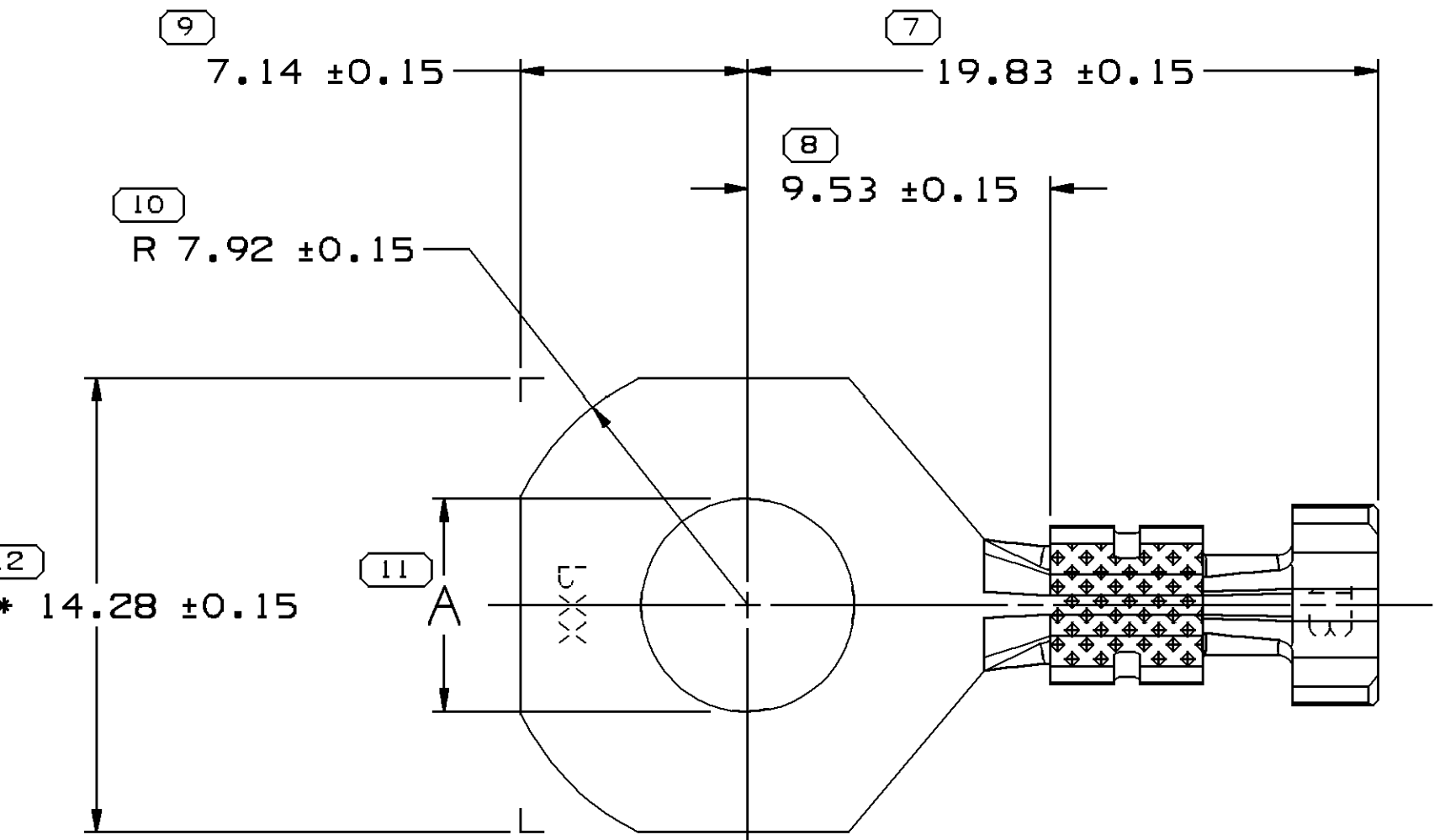


VIEW SCALE DOES NOT REFLECT
ACTUAL PART SIZE

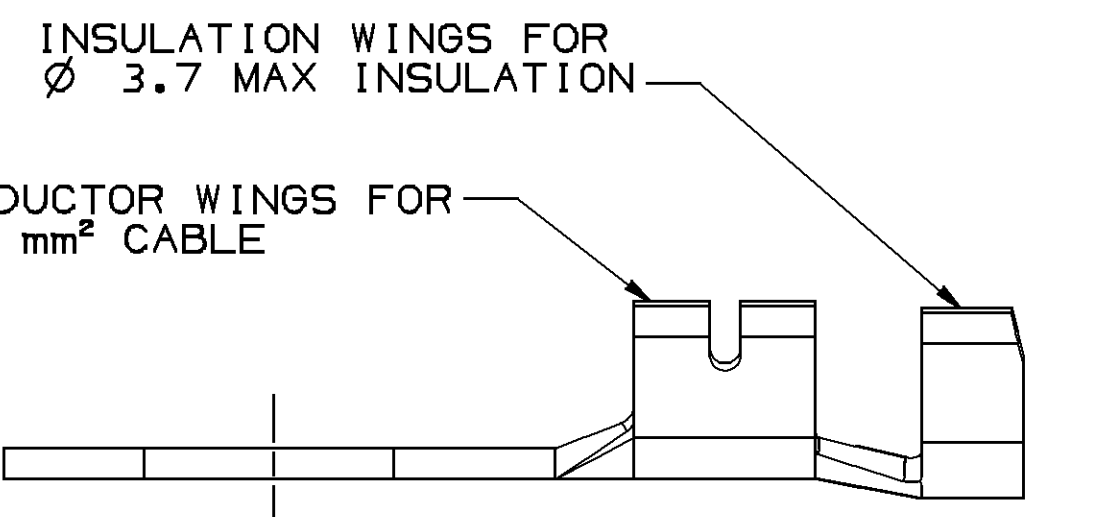


TYPE 201

12103512	B3	-	1.024 X 26.97	M3649155 210 GILDING 3/4 HD SN PLTD	6.7
PART	NO	REV/N/P	STATUS	MAT'L SIZE	PLATED
MATERIAL SPECIFICATION					φ A±0.1

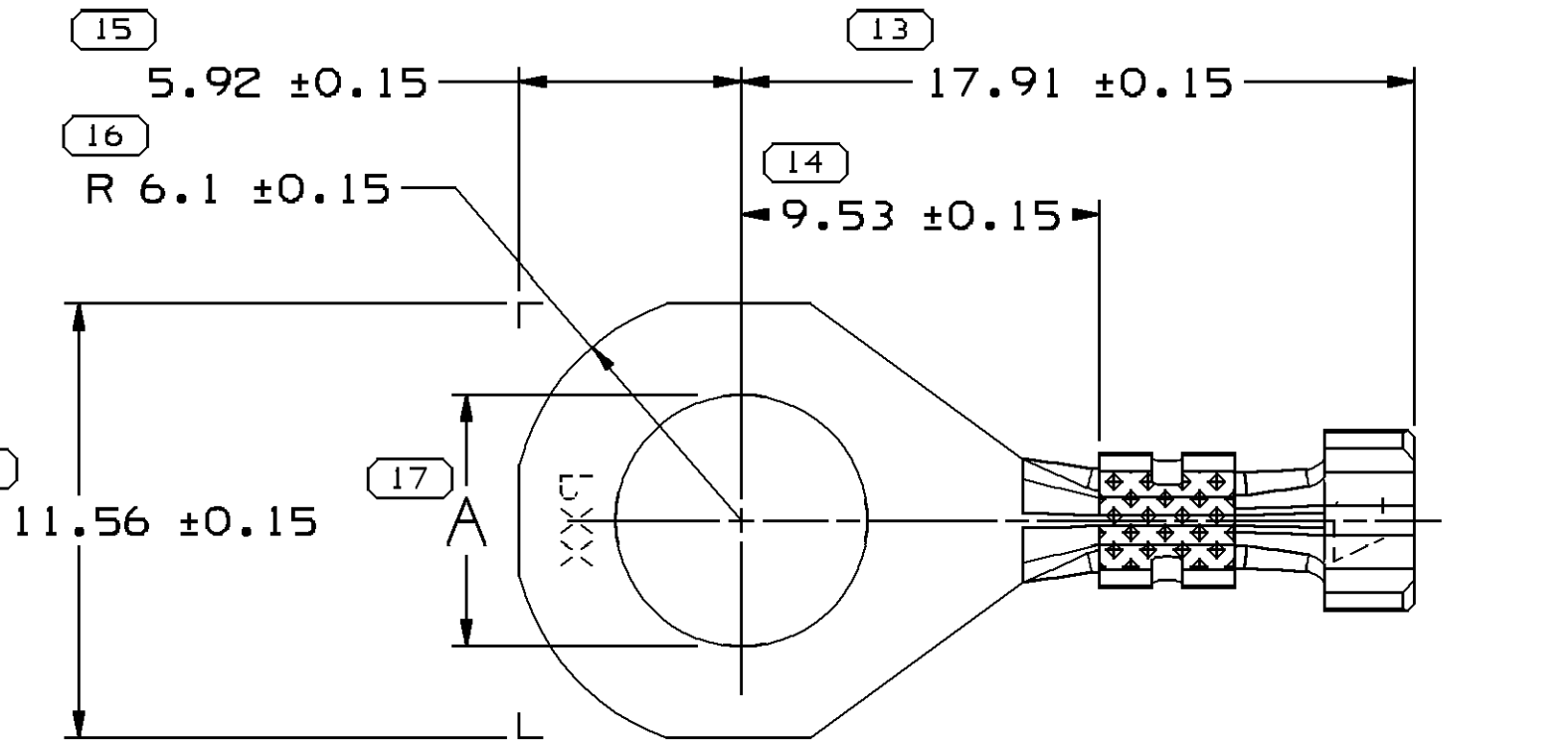


VIEW SCALE DOES NOT REFLECT
ACTUAL PART SIZE

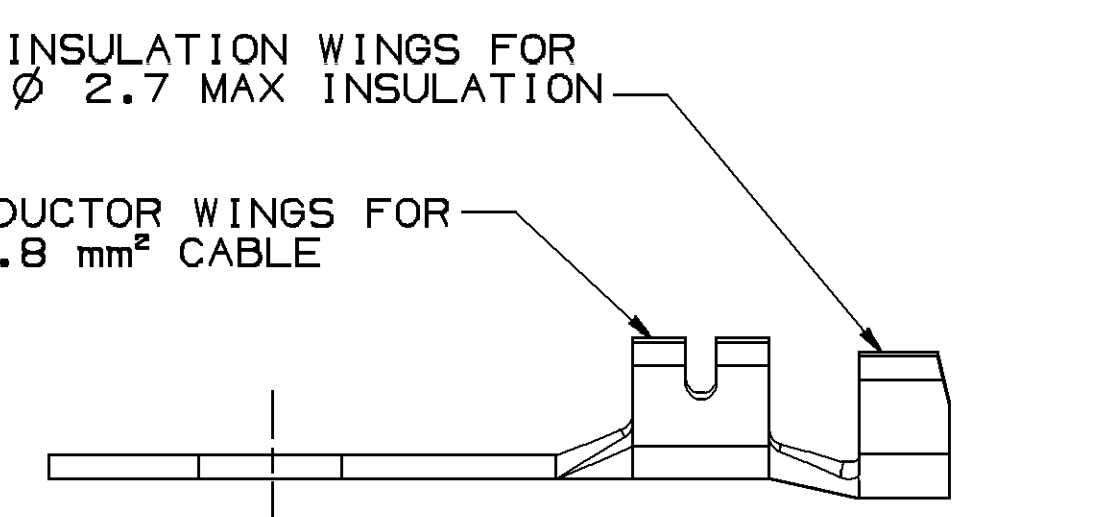


TYPE 202

12103513	B3	-	0.813 X 26.97	M3649129 210 GILDING 3/4 HD SN PLTD	6.7
PART	NO	REV/N/P	STATUS	MAT'L SIZE	PLATED
MATERIAL SPECIFICATION					φ A±0.1

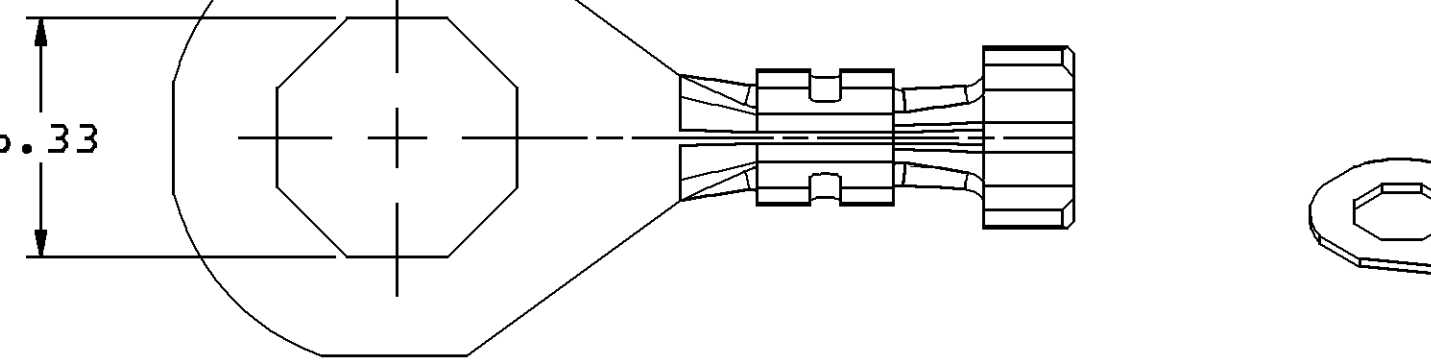


VIEW SCALE DOES NOT REFLECT
ACTUAL PART SIZE



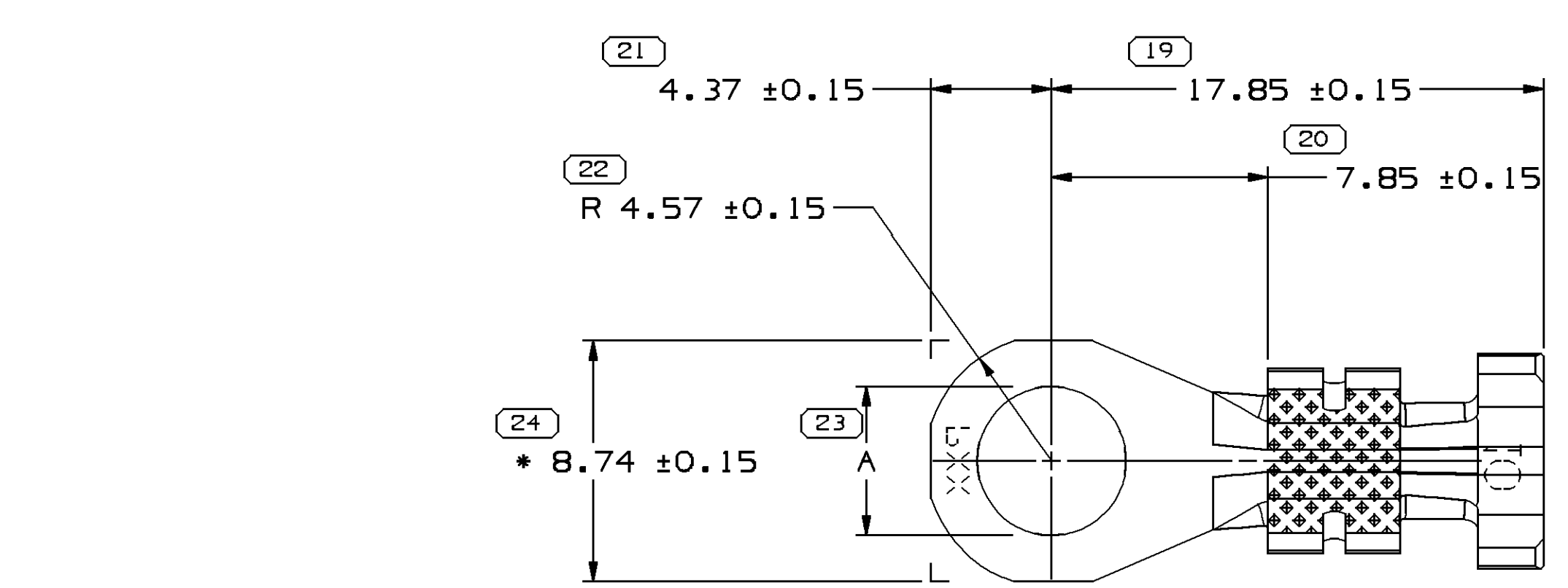
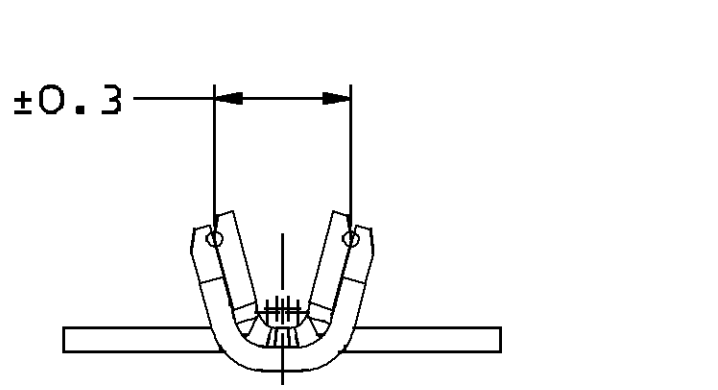
TYPE 203

13539139	01	-	0.645 X 23.83	M3649097 210 GILDING 3/4 HD SN PLTD	-	206
15418340	01	AB	0.645 X 23.83	M3649097 210 GILDING 3/4 HD SN PLTD	-	206
12103516	B4	-	0.645 X 23.83	M3649097 210 GILDING 3/4 HD SN PLTD	4.3	203
12103515	B4	-	0.645 X 23.83	M3649097 210 GILDING 3/4 HD SN PLTD	5.4	203
12103514	B4	-	0.645 X 23.83	M3649097 210 GILDING 3/4 HD SN PLTD	6.7	203
PART	NO	REV/N/P	STATUS	MAT'L SIZE	PLATED	φ A±0.1 TYPE
MATERIAL SPECIFICATION						

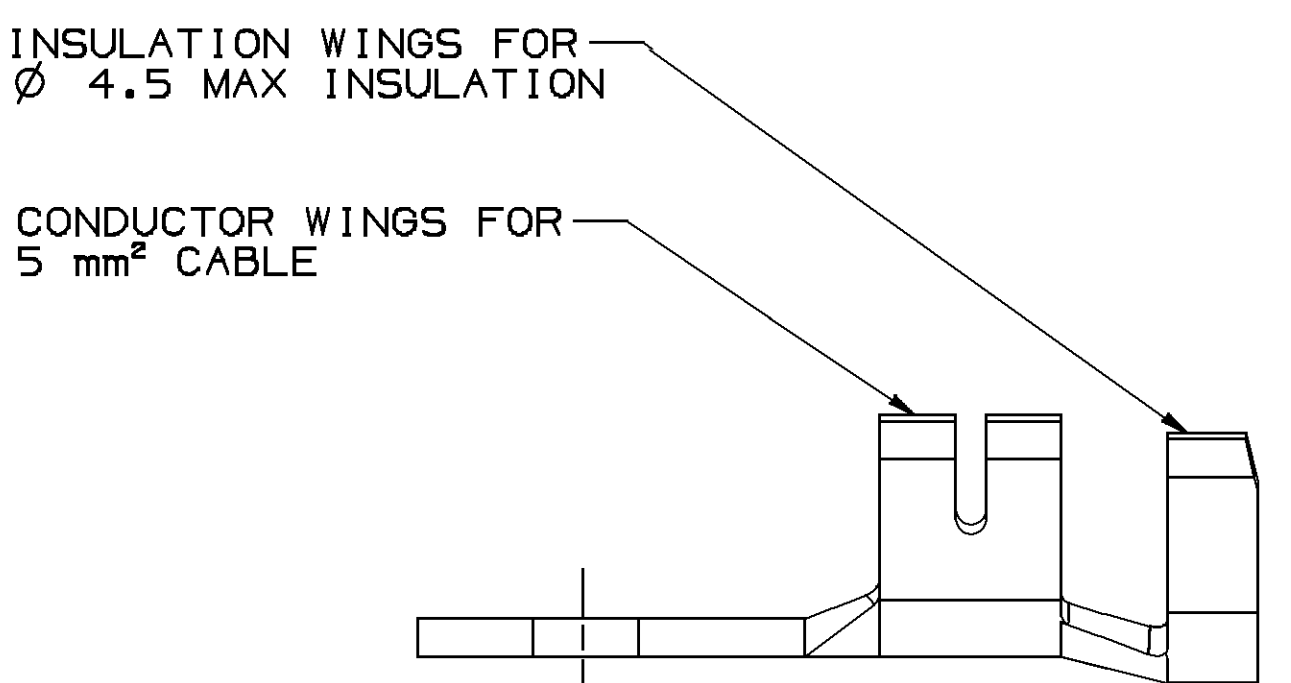


TYPE 206
SAME AS TYPE 203
EXCEPT AS SHOWN

VIEW SCALE DOES NOT REFLECT
ACTUAL PART SIZE



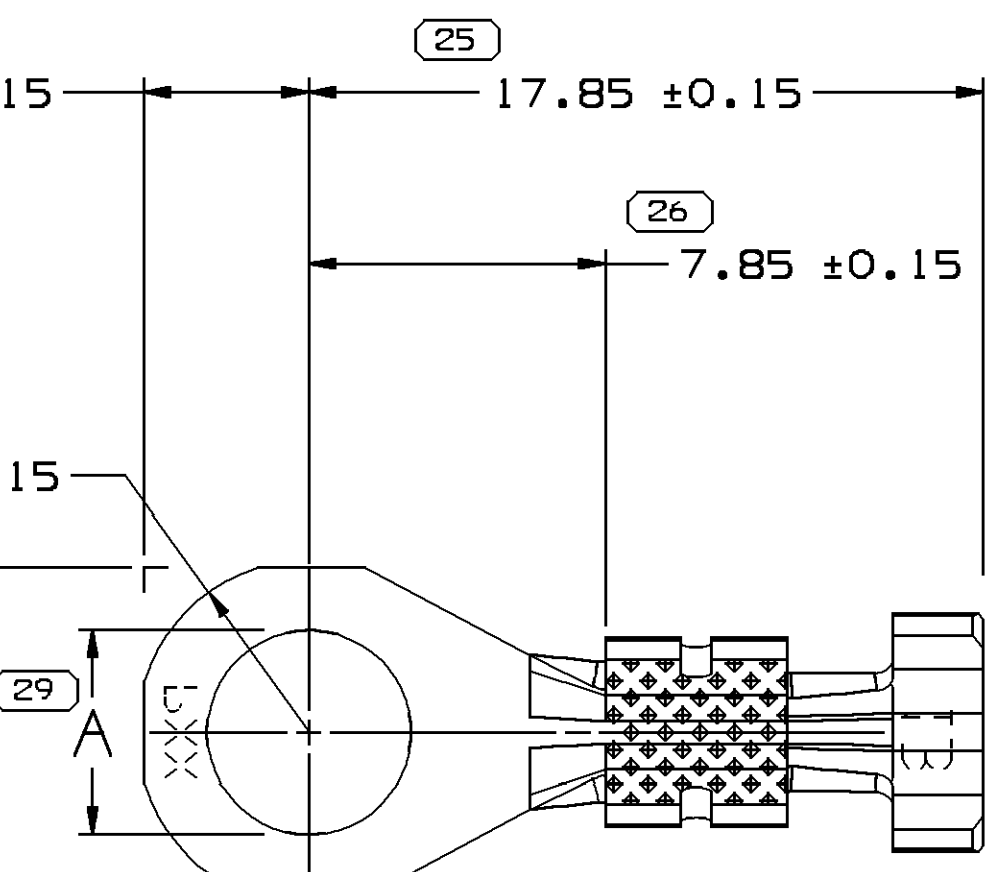
VIEW SCALE DOES NOT REFLECT
ACTUAL PART SIZE



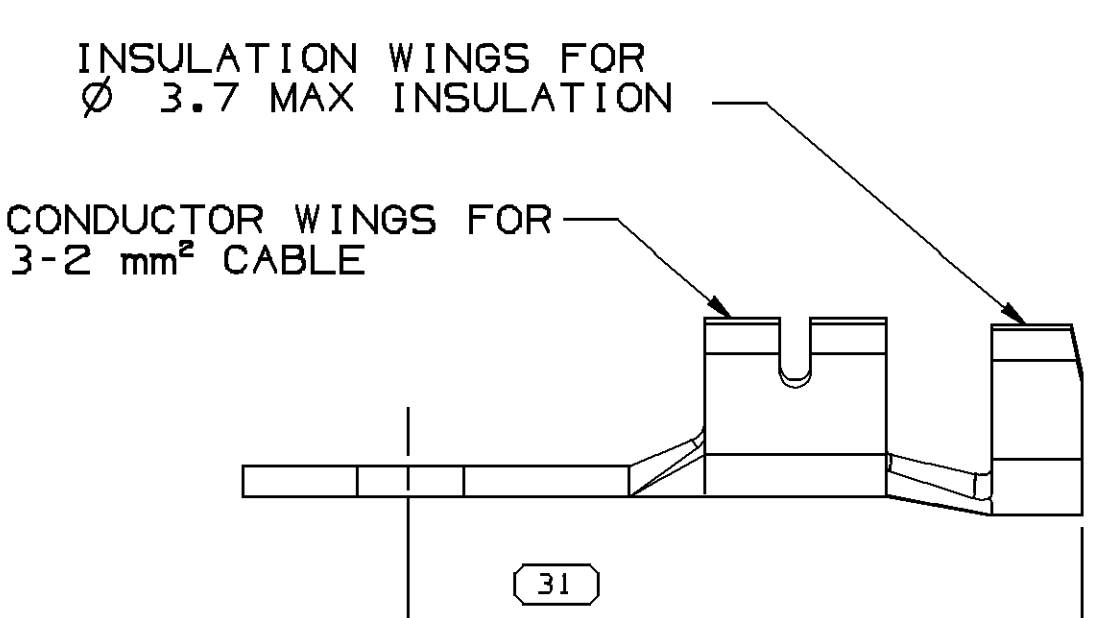
TYPE 204

12103516	B3	-	1.024 X 22.22	M3649152 210 GILDING 3/4 HD SN PLTD	4.3
12103517	B3	-	1.024 X 22.22	M3649152 210 GILDING 3/4 HD SN PLTD	5.4
PART	NO	REV/N/P	STATUS	MAT'L SIZE	PLATED
MATERIAL SPECIFICATION					φ A±0.1

12103500	B3	-	0.813 X 22.22	M3649124 210 GILDING 3/4 HD SN PLTD	4.3
12103519	B3	-	0.813 X 22.22	M3649124 210 GILDING 3/4 HD SN PLTD	5.4
PART	NO	REV/N/P	STATUS	MAT'L SIZE	PLATED
MATERIAL SPECIFICATION					φ A±0.1

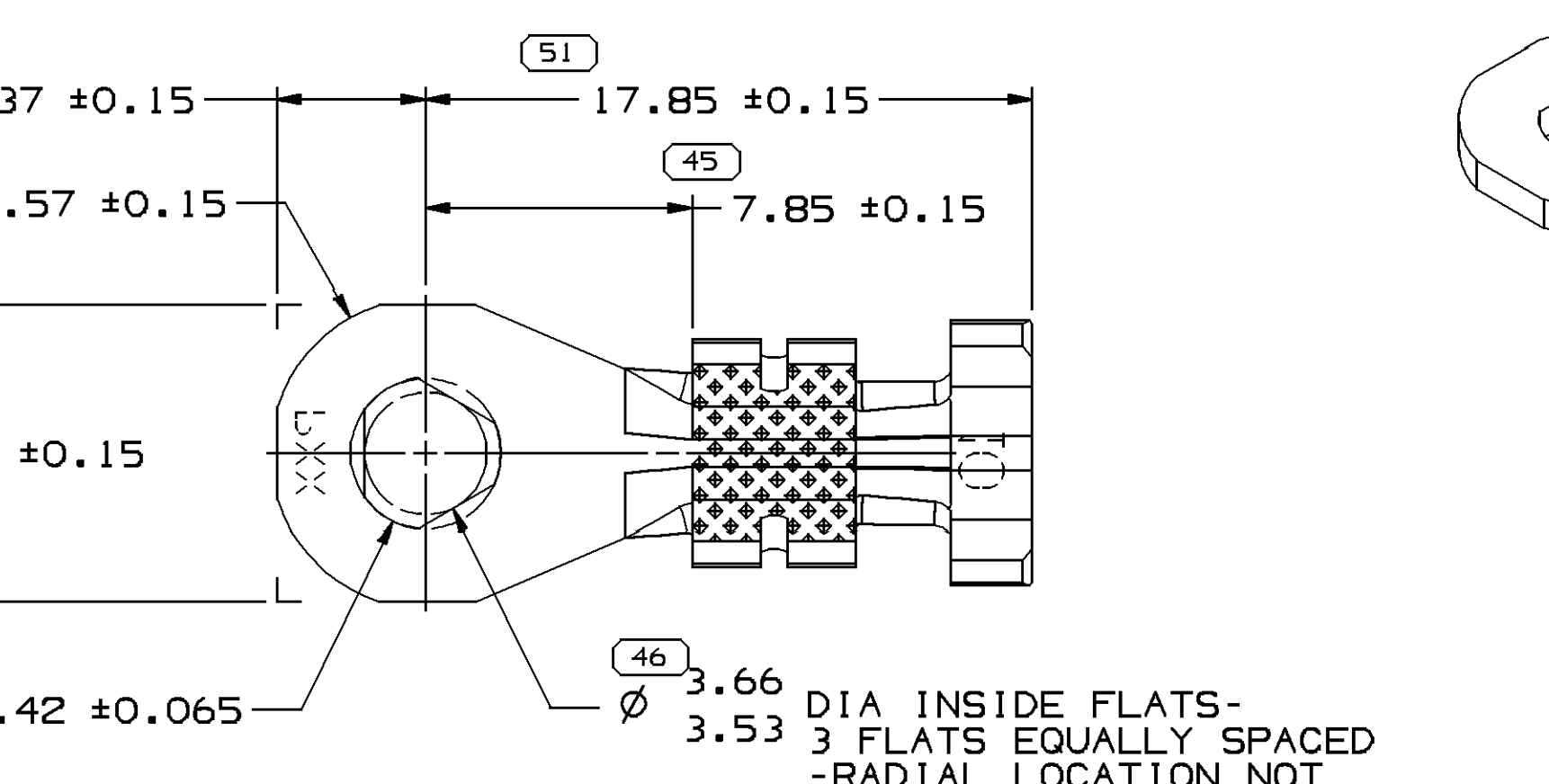


VIEW SCALE DOES NOT REFLECT
ACTUAL PART SIZE

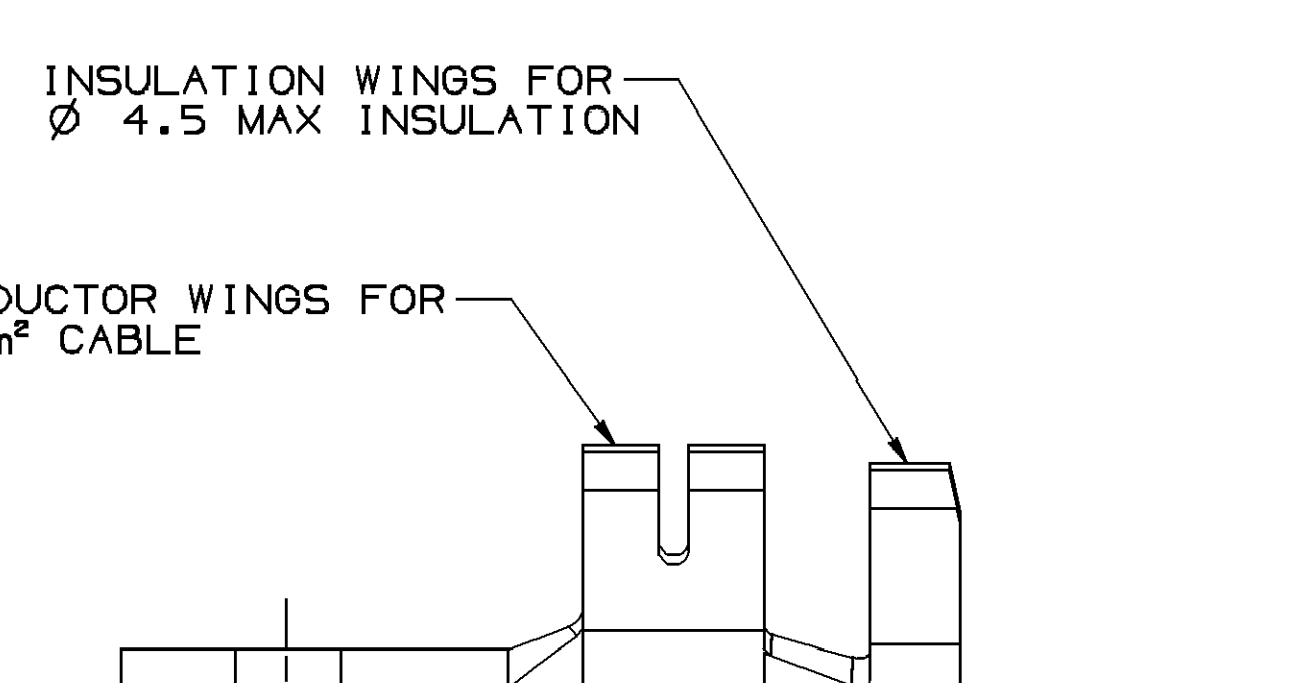


TYPE 205

15354670	03	AD	0.813 X 22.22	M3720124 C171 1/4 HT SN PLTD	5.4
12103520	B3	-	0.813 X 22.22	M3649124 210 GILDING 3/4 HD SN PLTD	4.3
12103519	B3	-	0.813 X 22.22	M3649124 210 GILDING 3/4 HD SN PLTD	5.4
PART	NO	REV/N/P	STATUS	MAT'L SIZE	PLATED
MATERIAL SPECIFICATION					φ A±0.1

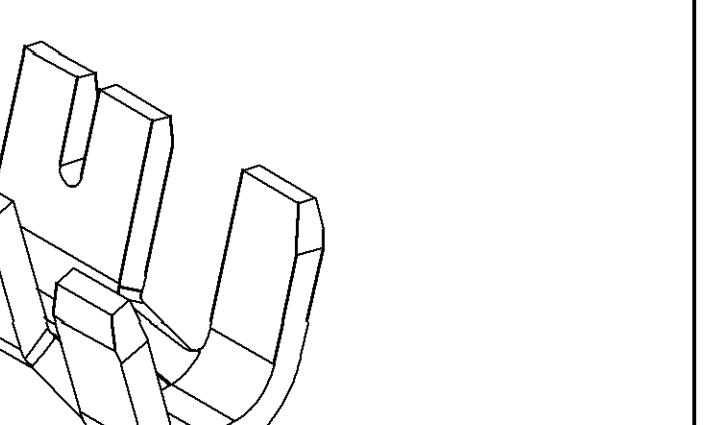


VIEW SCALE DOES NOT REFLECT
ACTUAL PART SIZE



TYPE 206

13629796	01	AA	1.024 X 22.22	M3649152 210 GILDING 3/4 HD SN PLTD	-	206
PART	NO	REV/N/P	STATUS	MAT'L SIZE	PLATED	φ A±0.1 TYPE
MATERIAL SPECIFICATION						



NOTES

- UNLESS OTHERWISE SPECIFIED AND/OR INDICATED: DIMENSIONS ARE TO FACE OF VIEW SHOWN AND AUTOMATICALLY ROUNDED BY COMPUTER FOR INSPECTION. (SEE MATH MODEL FOR PRECISE DIMENSIONS.) FOR ALL OTHER DIMENSIONS NOT SHOWN BUT REQUIRED FOR TOOL BUILD, SEE MATH MODEL FOR PRECISE TOOL PATH DATA.
- "*" INDICATES DIMENSIONS MADE AT CUT-OFF AND CRIMP DIE.
- TYPE 206, PN 13629796 UTILIZES FEATURE TO RETAIN SCREW OF M4-0.7mm OR EQUIVALENT.

4.3	M4	#8
5.4	M5	#10
6.7	M6	1/4"
φ A	METRIC	STANDARD
SCREW SIZE		

4.3	M4	#8
5.4	M5	#10
6.7	M6	1/4"
φ A	METRIC	STANDARD
SCREW SIZE		

4.3	M4	#8
5.4	M5	#10
6.7	M6	1/4"
φ A	METRIC	STANDARD
SCREW SIZE		

DATE	21M199
REV	01
ZONE	-
REVISION HISTORY	CLEARED REV COL & 15354670 - RELEASED
AUTH	990005 JAS RM EH
DR	NP/DP/1 2
DATE	23AU99
REV	02
ZONE	-
REVISION HISTORY	15354670 - REVISED MAT'L SPEC
AUTH	196609 KBD KBD EJM
DR	NP/DP/1 2
DATE	13SE99
REV	03
ZONE	-
REVISION HISTORY	15354670 - REVISED MAT'L SPEC
AUTH	196680 MAC MAC EJM
DR	NP/DP/1 2
DATE	06OC99
REV	04
ZONE	-
REVISION HISTORY	15354670 - CORRECTED REVISION LEVEL
AUTH	197402 MAC MAC EJM
DR	NP/DP/1 2
DATE	26JA00
REV	05
ZONE	-
REVISION HISTORY	15354670 - UPDATED PDM ATTRIBUTES
AUTH	198517 AMB AMB EJM
DR	NP/DP/1 2
DATE	10AU01
REV	06
ZONE	-
REVISION HISTORY	15418340 - RELEASED, 12103514-16 ADDED "TYPE" COLUMN TO CHART
AUTH	212640 EES LJJ RAP
DR	NP/DP/1 2
DATE	26MR04
REV	07
ZONE	-
REVISION HISTORY	ALL PARTS - REVISED "** REFERENCE TO NOTE 2
AUTH	253370 CCV JAA RAP
DR	NP/DP/1 2
DATE	24AU05
REV	08
ZONE	-
REVISION HISTORY	13539139 - RELEASED; ALL PARTS - REVISED MAT'L SPEC TO LATEST M-SPEC STANDARD
AUTH	271323 RH RH WM
DR	NP/DP/1 2
DATE	12AP07
REV	09
ZONE	-
REVISION HISTORY	13629796 - RELEASED
AUTH	401003 BE BE SM
DR	NP/DP/1 2
DATE	17SE07
REV	10
ZONE	-
REVISION HISTORY	UPDATED PDM ATTRIBUTES
AUTH	402377 MM MM ACR
DR	NP/DP/1 2

DELPHI	
DELPHI PACK/ARO ELECTRICAL/ELECTRONIC ARCHITECTURE	
BYPASS, OH	
DATE	21M199
REV	01
ZONE	-
REVISION HISTORY	CLEARED REV COL & 15354670 - RELEASED
AUTH	990005 JAS RM EH
DR	NP/DP/1 2
DATE	23AU99
REV	02
ZONE	-
REVISION HISTORY	15354670 - REVISED MAT'L SPEC
AUTH	196609 KBD KBD EJM
DR	NP/DP/1 2
DATE	13SE99
REV	03
ZONE	-
REVISION HISTORY	15354670 - REVISED MAT'L SPEC
AUTH	196680 MAC MAC EJM
DR	NP/DP/1 2
DATE	06OC99
REV	04
ZONE	-
REVISION HISTORY	15354670 - CORRECTED REVISION LEVEL
AUTH	197402 MAC MAC EJM
DR	NP/DP/1 2
DATE	26JA00
REV	05
ZONE	-
REVISION HISTORY	15354670 - UPDATED PDM ATTRIBUTES
AUTH	198517 AMB AMB EJM
DR	NP/DP/1 2
DATE	10AU01
REV	06
ZONE	-
REVISION HISTORY	15418340 - RELEASED, 12103514-16 ADDED "TYPE" COLUMN TO CHART
AUTH	212640 EES LJJ RAP
DR	NP/DP/1 2
DATE	26MR04
REV	07
ZONE	-
REVISION HISTORY	ALL PARTS - REVISED "** REFERENCE TO NOTE 2
AUTH	253370 CCV JAA RAP
DR	NP/DP/1 2
DATE	24AU05
REV	08
ZONE	-
REVISION HISTORY	13539139 - RELEASED; ALL PARTS - REVISED MAT'L SPEC TO LATEST M-SPEC STANDARD
AUTH	271323 RH RH WM
DR	NP/DP/1 2
DATE	12AP07
REV	09
ZONE	-
REVISION HISTORY	13629796 - RELEASED
AUTH	401003 BE BE SM
DR	NP/DP/1 2
DATE	17SE07
REV	10
ZONE	-
REVISION HISTORY	UPDATED PDM ATTRIBUTES
AUTH	402377 MM MM ACR
DR	NP/DP/1 2

12103500

Mouser Electronics

Authorized Distributor

Click to View Pricing, Inventory, Delivery & Lifecycle Information:

[Aptiv:](#)

[12103515-L](#) [12103515-CT](#)