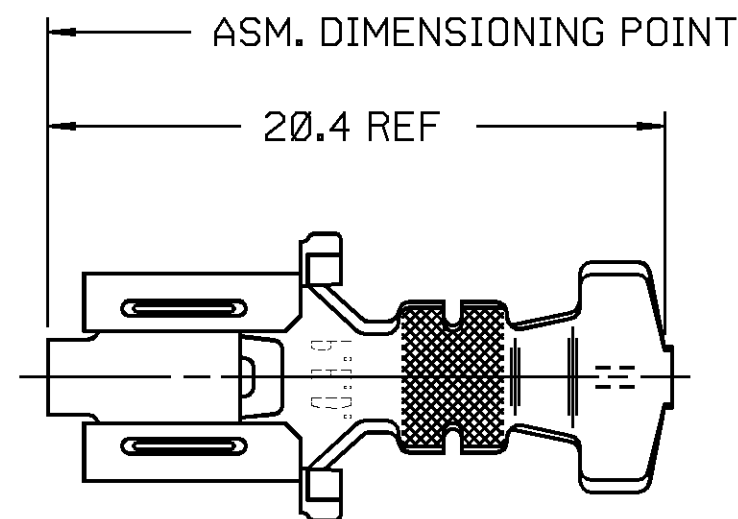


0-

THIS DRAWING AND DESIGN HEREON CONSTITUTES A PROPRIETARY DESIGN OF PACKARD ELECTRIC DIVISION AND IS NOT TO BE DUPLICATED OR REPRODUCED WITHOUT AUTHORITY OF PACKARD ELECTRIC DIVISION.

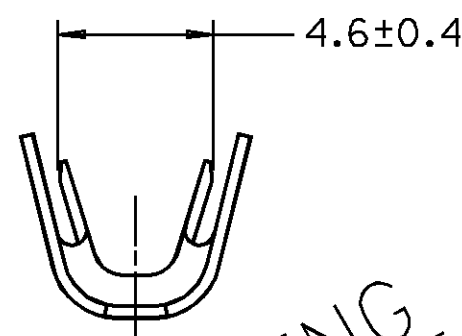
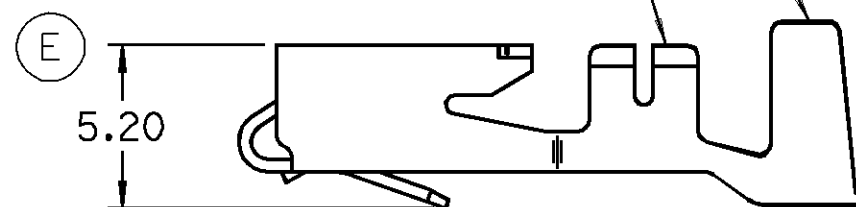
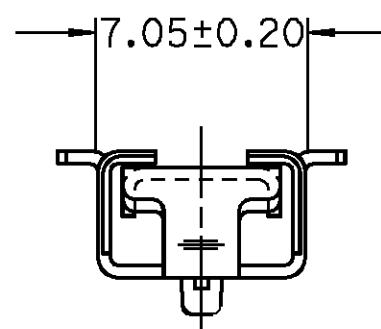
DO NOT SCALE

PART NO. 1208 4588



INSULATION WINGS FOR
5.24 MM MAX. INSUL. DIA.

CONDUCTOR WINGS FOR
5.0-3.0 MM ² CABLE —



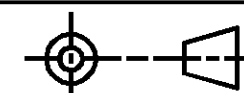
WARNING
GEOMETRY MAY NOT BE
DRAWN TO SCALE

[illegible]

PED/INIRGRAPH
EMS

```
FILE      #####USER#####
SPEC:    DGN#SPECIFICATION#####
        #####SYTIME#####
```

THIRD ANGLE PROJECTION



METRIC

DIMENSIONS ARE IN MILLIMETERS
UNLESS OTHERWISE SPECIFIED.

CODE NO.

6900

Q.C.

DWG.	30MR88
DATE	

SCALE
NONE

TOLERANCE UNLESS OTHERWISE SPECIFIED		
DECIMAL:		ANGULAR $\pm 2^\circ$
ONE PLACE	± 0.3	
TWO PLACE	± 0.15	

DR.	J. HOUGELMAN	30MR88
-----	--------------	--------

CK.	T. MUDREY	DATE	11AP88
-----	-----------	------	--------

REFERENCE NO. SHEET #2
12015135 "D" SIZE

APPR.	DATE
APPR. G. SMALDINO	DATE 13AP88

MATERIAL SPEC.
0.406 THK. TIN BRASS-TIN PLATED

NAME	TERM F M/P 630 SPL
------	--------------------

PART NO. 1208 4588
OUTLINE DRAWING

SIZE
B

PACKARD ELECTRIC

Mouser Electronics

Authorized Distributor

Click to View Pricing, Inventory, Delivery & Lifecycle Information:

[Aptiv:](#)

[12084588-L](#)