

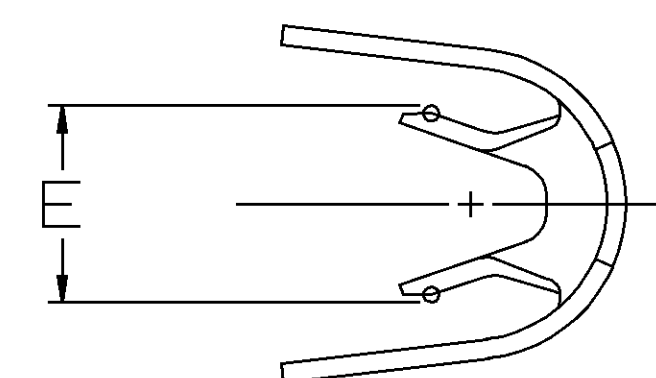
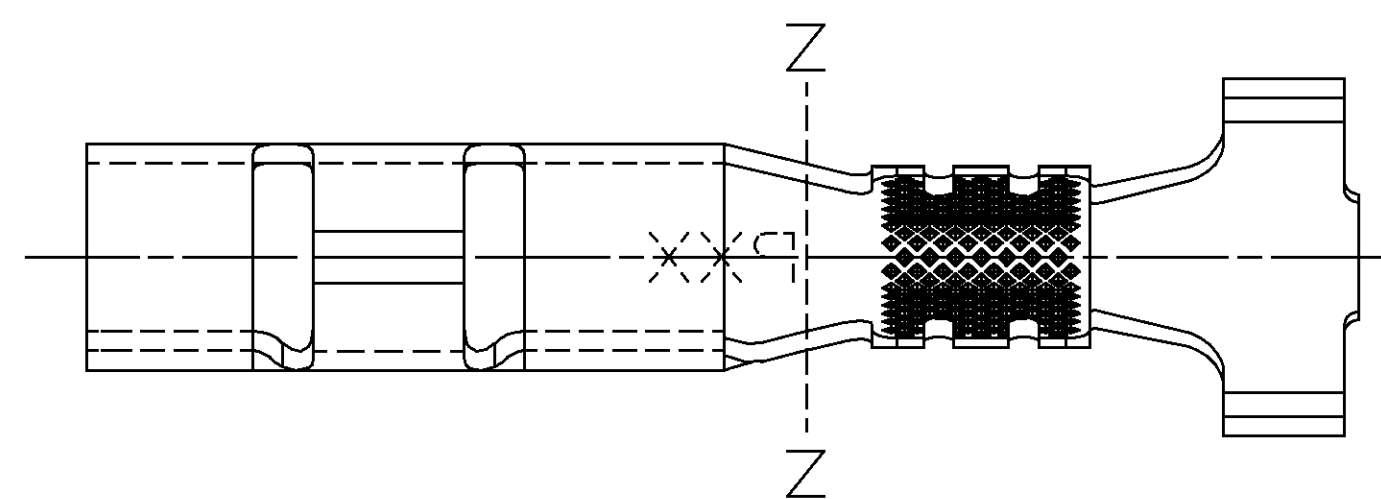
[illegible]

Technical drawing of a mechanical part, likely a bracket or flange, showing dimensions in inches. The drawing includes a top view and a side view. The top view shows a rectangular part with a central circular feature. The side view shows a cross-section of the part, revealing a flange with a central hole. Dimensions are provided for the overall width and height of the part, as well as the thickness of the flange.

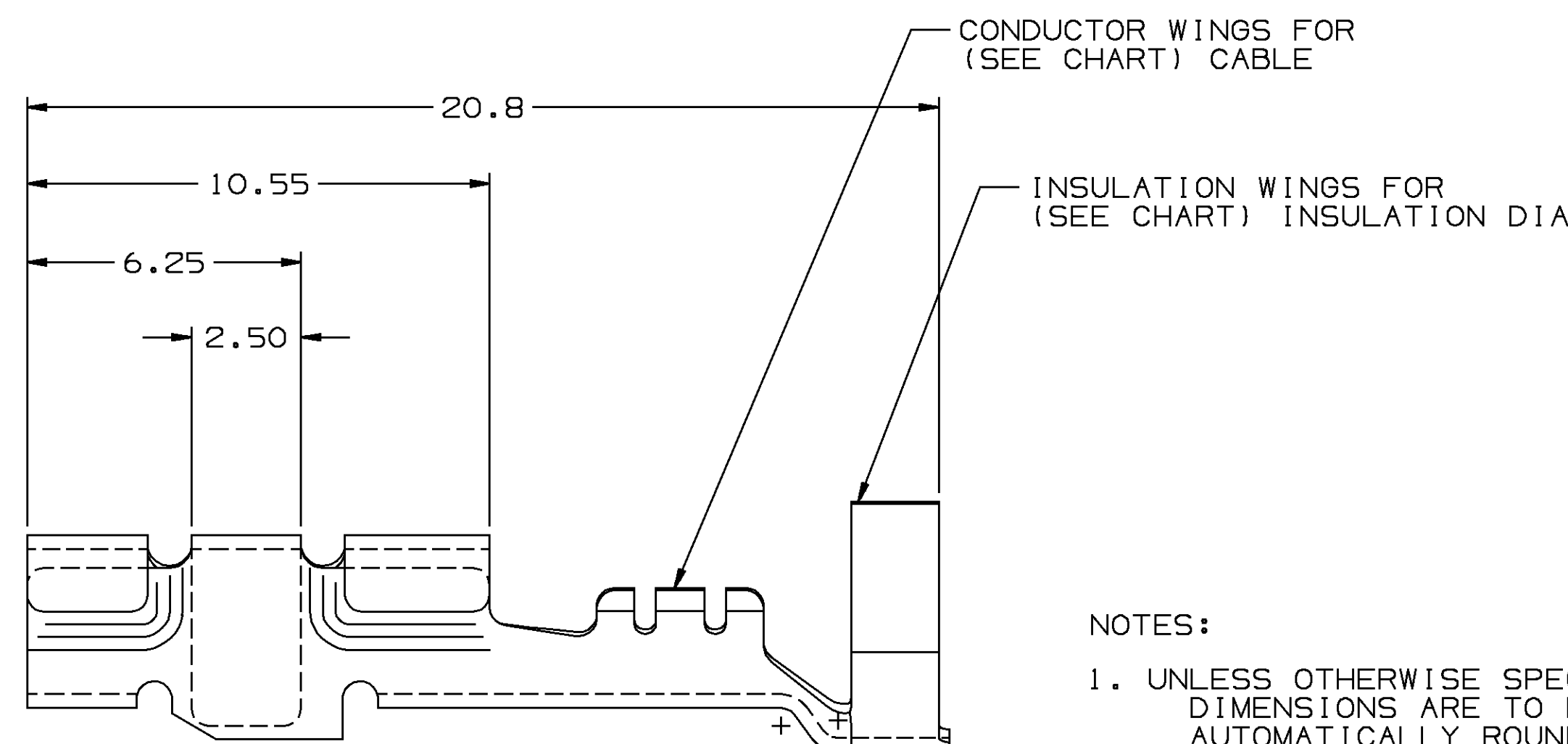
Dimensions shown:

- Overall width: 3.95 ± 0.15 TYP -2 PLCS
- Overall height: 3.75 ± 0.15 TYP -2 PLCS
- Flange thickness: 0.125 ± 0.005 TYP -2 PLCS

VIEW TO Z-Z




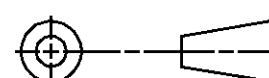
VIEW TO Z-Z



NOTES:

1. UNLESS OTHERWISE SPECIFIED AND/OR INDICATED:
DIMENSIONS ARE TO FACE OF VIEW SHOWN AND
AUTOMATICALLY ROUNDED BY COMPUTER FOR INSPECTION.
(SEE MATH MODEL FOR PRECISE DIMENSION) FOR ALL
OTHER DIMENSIONS NOT SHOWN BUT REQUIRED FOR TOOL
BUILD, SEE MATH MODEL FOR PRECISE TOOL PATH DATA.
2. TERMINALS ON THIS DRAWING ARE DESIGNED TO CRIMP AROUND
AND RETAIN CABLE SEALS SHOWN ON DRAWING 12010295,
SHEET 1 OF 4.
3. MATES TO LAMP SOCKET BODY 12066541 OR EQUIVALENT.
4. MATING TERMINAL 12066635 OR EQUIVALENT.
5. "PXX" INDICATES "P" PLUS LAST TWO DIGITS OF MAKE SERIES
NUMBER (P01, P02, P03, ETC.)

PART NO	REV	STATUS	MAT'L SIZE	MAT'L SPEC	PART NO	REV	STATUS	MAT'L SIZE	MAT'L SPEC	SIZE (MM ²)	I.D.	DIA	TYPE	E	+0.4		
			UNPLATED				PLATED				CABLE						

DRAWING TYPE PID		OTHER DRAWINGS AVAILABLE DETAIL	
		THIRD ANGLE PROJECTION	
			
CODE NO 6900	QC	METRIC DIMENSIONS ARE IN MILLIMETERS UNLESS OTHERWISE SPECIFIED	
DWG DATE 140C86			
SCALE 8:1	DES		
REFERENCE NO		DR RUBEN ORTIZ 12N09B	
		CK FCO. KOPCA 15N09B	
		APPR J. ALVAREZ 07DE9B	
		VOL CM ³	
MATERIAL SPEC			
SEE CHART			
NAME			
TAXI TERM LP SOC WGE BSE			
PART NUMBER		SIZE	
1206 6643		A1	

Mouser Electronics

Authorized Distributor

Click to View Pricing, Inventory, Delivery & Lifecycle Information:

[Aptiv:](#)

[12066639-L](#) [12066638-L](#)