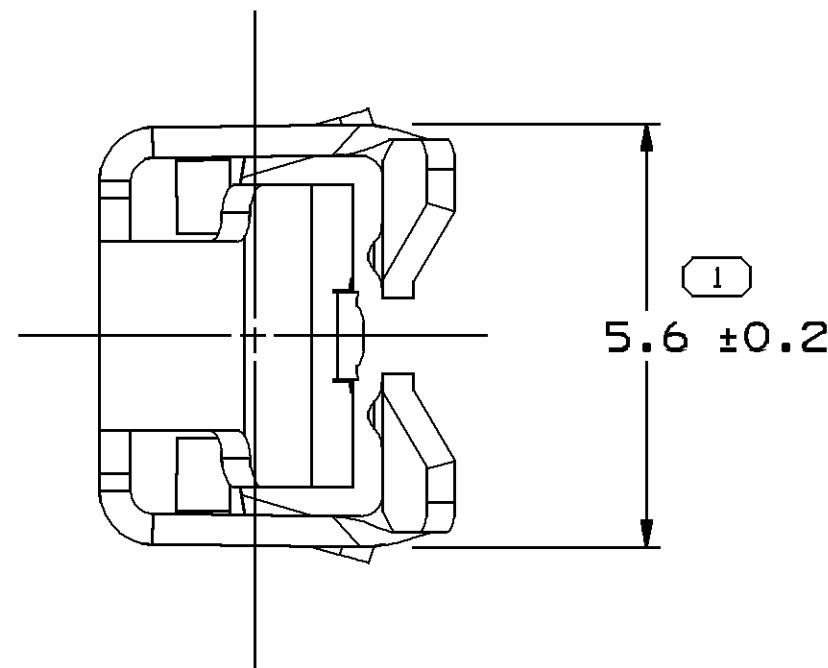
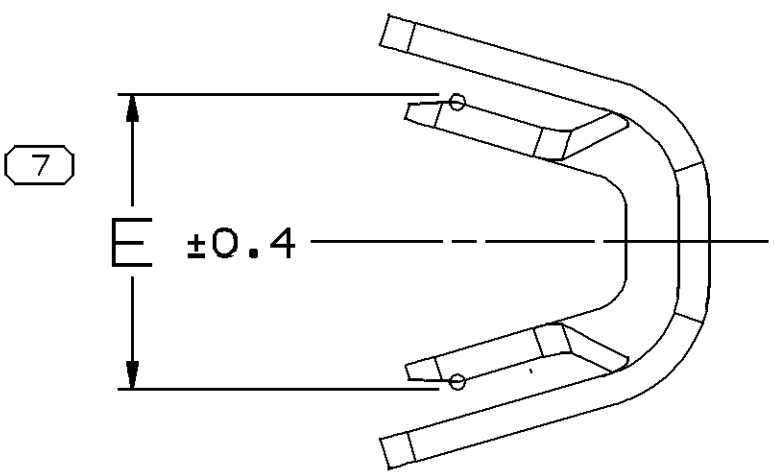
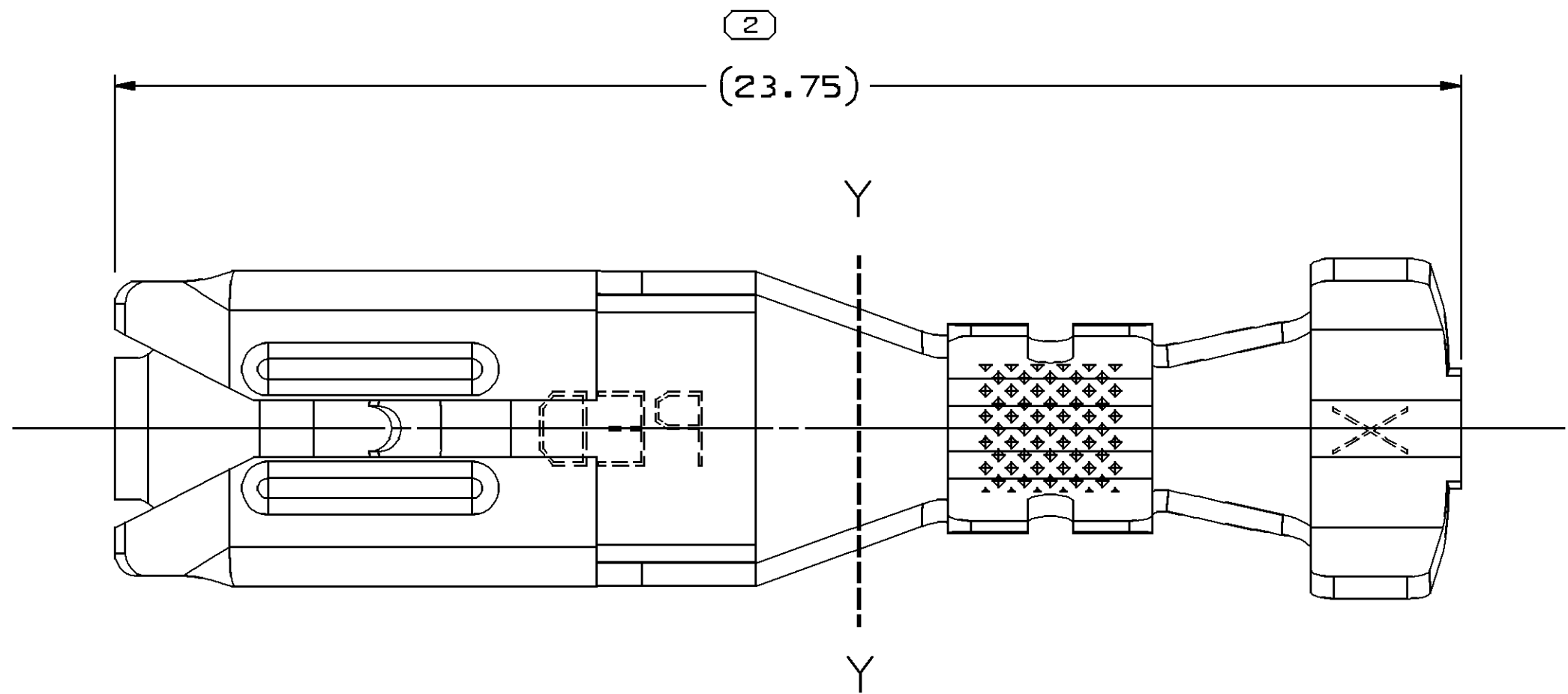


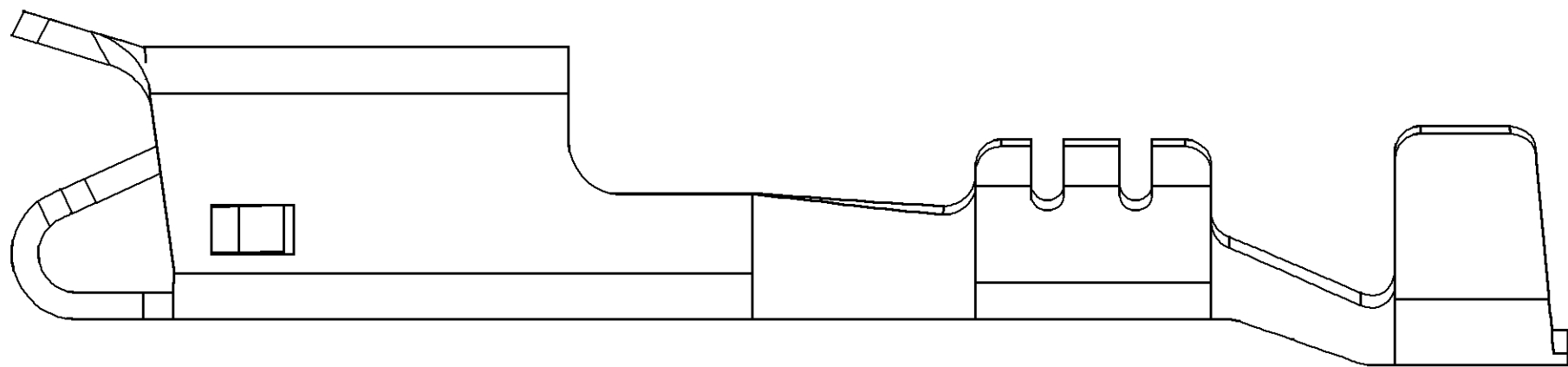
SYMBOL DEFINITION		MISSING NUMBERS		DATE		REV		N/P		CHG		ZONE		REVISION HISTORY		AUTH		DR		APVD	
THE NUMBER INSIDE THE SYMBOL CORRESPONDS TO THE NUMBER ON THE INSPECTION REPORT FOR THIS DRAWING/PART NUMBER	TOTAL NO. OF SYMBOLS ON DRAWING	7		22MR99	R	001	--	--	--	--	--	--	--	15366083 - RELEASED 12052063 & 12052066 WERE SEPARATE DWG	990005	LMH	JHV	HJR			
	LAST NO. USED	8		29N000	R	002	--	--	--	--	--	--	--	12052063 & 12052066 WERE 12042063 & 12042066	204914	JPD	JPD	JPD			
				24MY06	R	03	-	-	-	-	-	-	-	ALL ACTIVE PARTS - UPDATED PDM ATTRIBUTES	280890	JTZ	JAA	BD6			
				01AU06	R	04	-	-	-	-	-	-	-	12052063 & 12052066 - MAT'L SPEC WAS P1519033	283052	MDH	JAA	MMW			



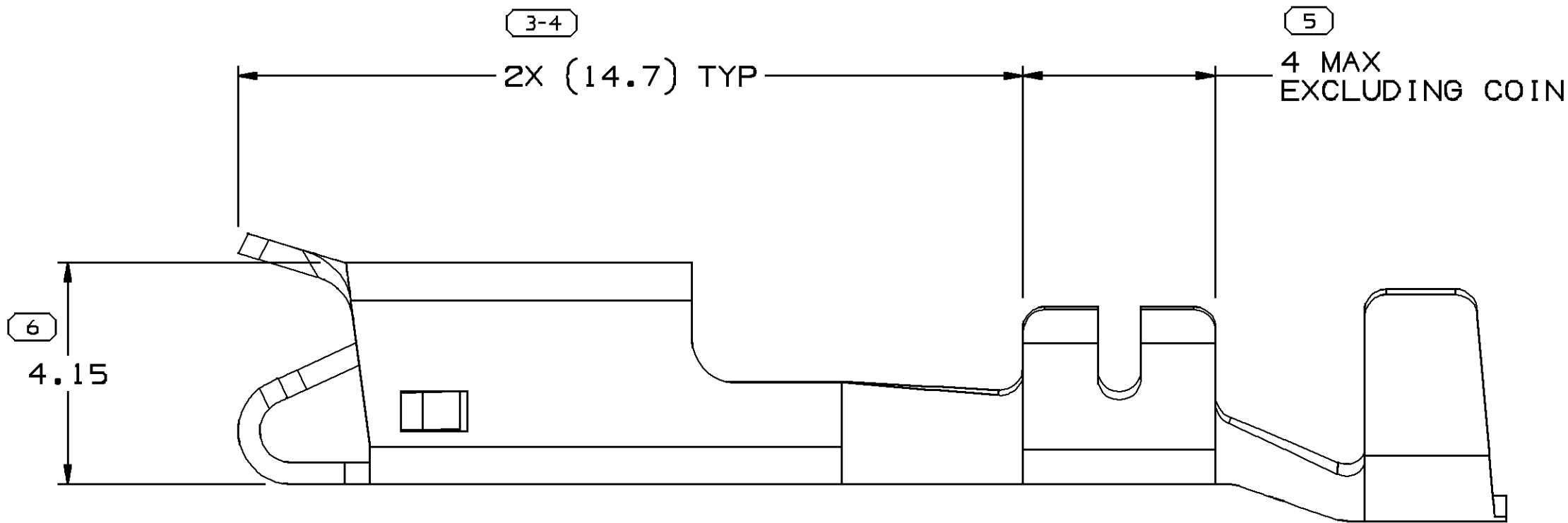
VIEW TO Y-Y



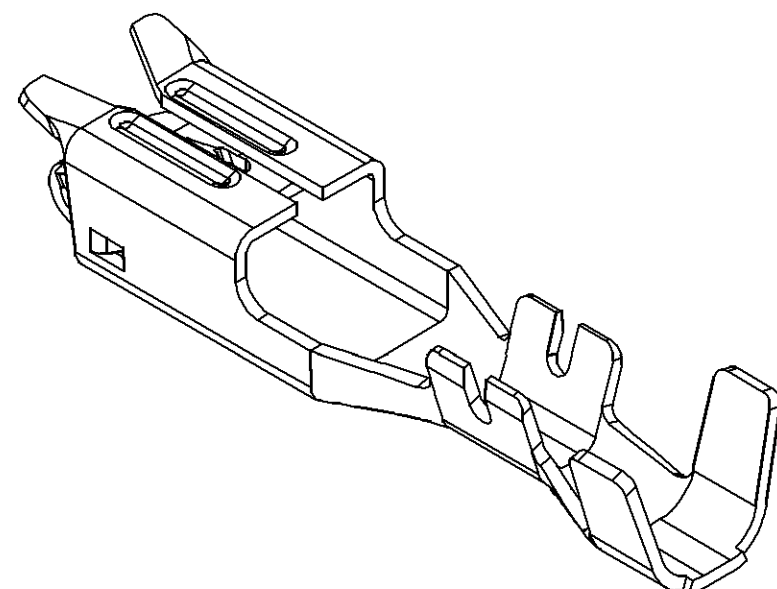
VIEW TO Y-Y



TYPE 102  
SAME AS TYPE 101  
EXCEPT AS SHOWN



TYPE 101



VIEW SCALE DOES NOT REFLECT  
ACTUAL PART SIZE

#### NOTES

1. UNLESS OTHERWISE SPECIFIED AND/OR INDICATED:

DIMENSIONS ARE TO FACE OF VIEW SHOWN AND AUTOMATICALLY ROUNDED BY COMPUTER FOR INSPECTION. (SEE MATH MODEL FOR PRECISE DIMENSIONS.) FOR ALL OTHER DIMENSIONS NOT SHOWN BUT REQUIRED FOR TOOL BUILD, SEE MATH MODEL FOR PRECISE TOOL PATH DATA.

2. RECOMMENDED MATING BLADE 0.81 THK X 4.8 WIDE

3. DO NOT PROBE, TEST OR OTHERWISE CONTACT THE INTERIOR REGION (THE SPRING OR ANY MOVING PART) OF THIS TERMINAL. SEVERE DAMAGE CAN OCCUR, COMPROMISING THE PERFORMANCE OF THE ELECTRICAL INTERFACE.

				15366083	01	AA		0.406 X 43.26	M3624033 NICKEL BARRIER/SILVER PLATE	2 - 1	15	3.97 - 2.48	101	3.7
				12052066	B3	--		0.406 X 38.1	M1574033 NONFERROUS C42500 EX HD	0.8 - 0.5	19	3.12 - 2.03	102	3.2
				12052063	B3	--		0.406 X 38.1	M1574033 NONFERROUS C42500 EX HD	2 - 1	15	3.97 - 2.48	101	3.7
				12047568	A	--	OBSOLETE	0.406 X 43.26	P1519392 425 TIN BRS EX HD SN PLTD	0.8 - 0.5	19	3.12 - 2.03	102	3.2
				12040974	E	--	OBSOLETE	0.406 X 43.26	P1519392 425 TIN BRS EX HD SN PLTD	2 - 1	15	3.97 - 2.48	101	3.7
PART NO	REV	N/P	STATUS	PART NO	REV	N/P	STATUS	MAT'L SIZE	MAT'L SPEC	SIZE (MM²)	ID	Ø	TYPE	E
				UNPLATED				PLATED				CABLE		

( 7 ) PROCESS SENSITIVE DIMENSION	
DIMENSIONS ENCLOSED IN ( ) INDICATE REFERENCE DIMENSIONS AND NO TOLERANCE LIMITS ARE ESTABLISHED	CHART D
FROM 0 TO 12	>12
TOLERANCE UNLESS OTHERWISE SPECIFIED	
±0.1	±0.2
ANGULAR TOLERANCE 22°	

DWG TYPE PART DRAWING	
STYLE	
VOLUME 1047	DISTR CODE
UNLESS OTHERWISE SPECIFIED	
THIS DOCUMENT IS IN ACCORDANCE WITH ASME Y14.5M-1994 AS MODIFIED BY THE IN-SITU DIMENSIONING AND TOLERANCE STANDARD. SEPARATE NOTATIONS OF FEATURES MAY BE BASED SEPARATELY REBARLESS OF DATUM REFERENCES.	
ALL DIMENSIONS ARE IN MILLIMETERS	
REFERENCE	
THIRD ANGLE PROJECTION	DO NOT SCALE
USE MATH DATA	UNIMAPHICS

DELPHI	
DELPHI PACKARD ELECTRIC SYSTEMS WREN, OH	
DR	DATE
APVD1 L. MACIAS	22MR99
APVD2 JOSE. HUERTA	12AP99
APVD3 JOSE. HUERTA	12AP99
APVD4	
APVD5	
SUBSTANCES OF CONCERN AND RECYCLED CONTENT PER DELPHI 10949001	
DRAWING NAME	
TAXI TERM F M/P 480	
DRAWING NUMBER	
12045885	
SIZE A0	SCALE 10:1
FRAME NO 1	SHEET NO 1 OF 1
REV R 04	N/P -

# Mouser Electronics

Authorized Distributor

Click to View Pricing, Inventory, Delivery & Lifecycle Information:

[Aptiv:](#)

[12052063-L](#)